

2727 Western Ave, Seattle, WA FOR SUBLEASE

Asking: \$19/RSF/Gross

Size: 12,286 RSF (*8,958 Usable SF)

Procuring Broker Fee: \$2.00/SF/YR

Parking: 21 Stalls Available



Building Highlights

2727 Western Avenue – Suite 200

Sublease space available now through April 30, 2028

12,286 RSF

Exterior Signage

Newly renovated lobby

Fully Built-Out as Standard Office

Fits 31 - 99 People

Central Air Conditioning

Prime Location

Rate includes utilities, building services & property expenses

Mostly Open Floor Plan Layout

Space is in Excellent Condition

High Ceilings

Ample Parking Available

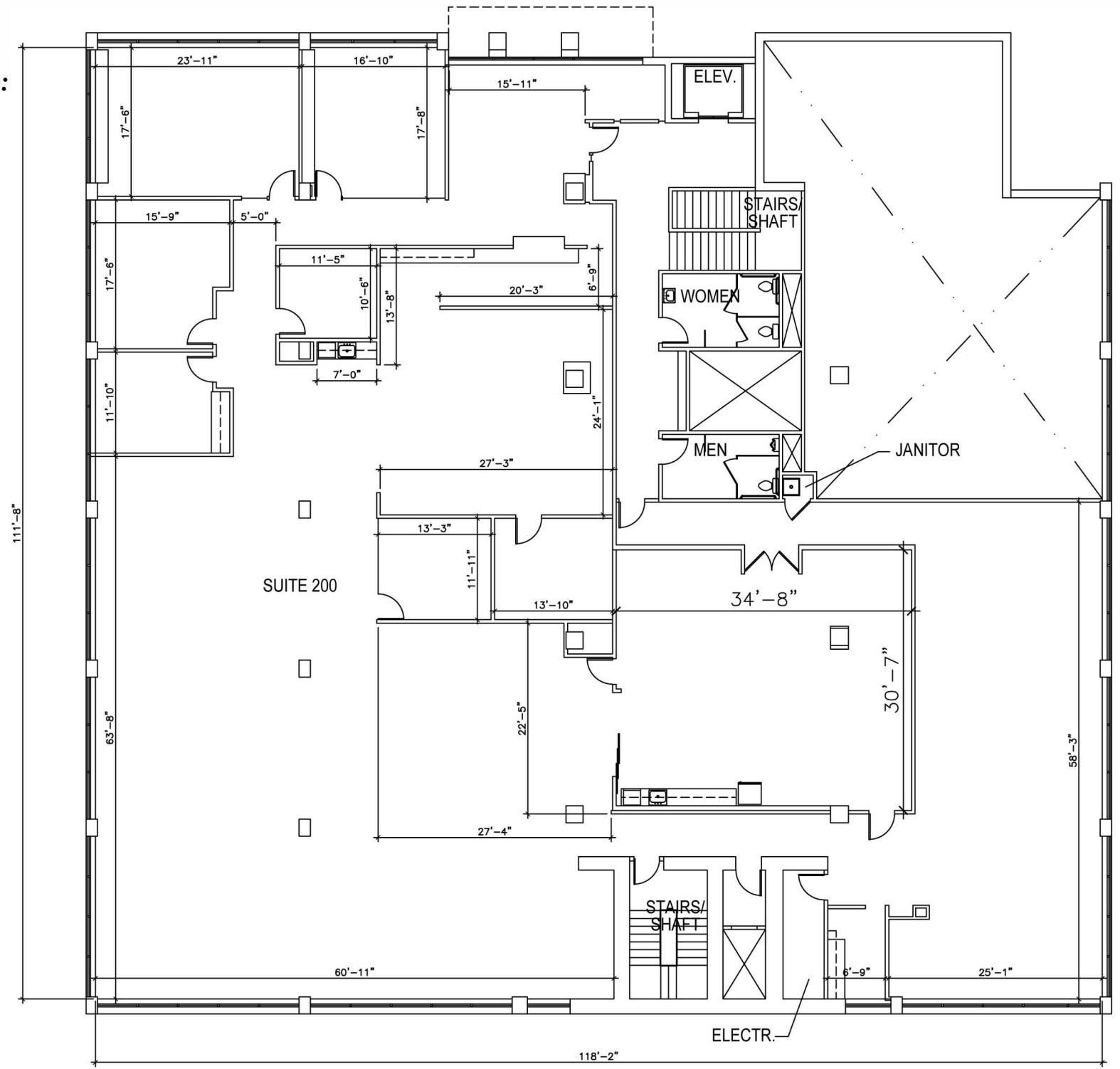


Now available for sublease: 12,286 SF of modern office space in the heart of Seattle's Belltown. The suite features five conference rooms, two private offices, storage areas, and a full server room, with high ceilings, polished concrete floors, and custom design details. Sublease term through April 30, 2028.

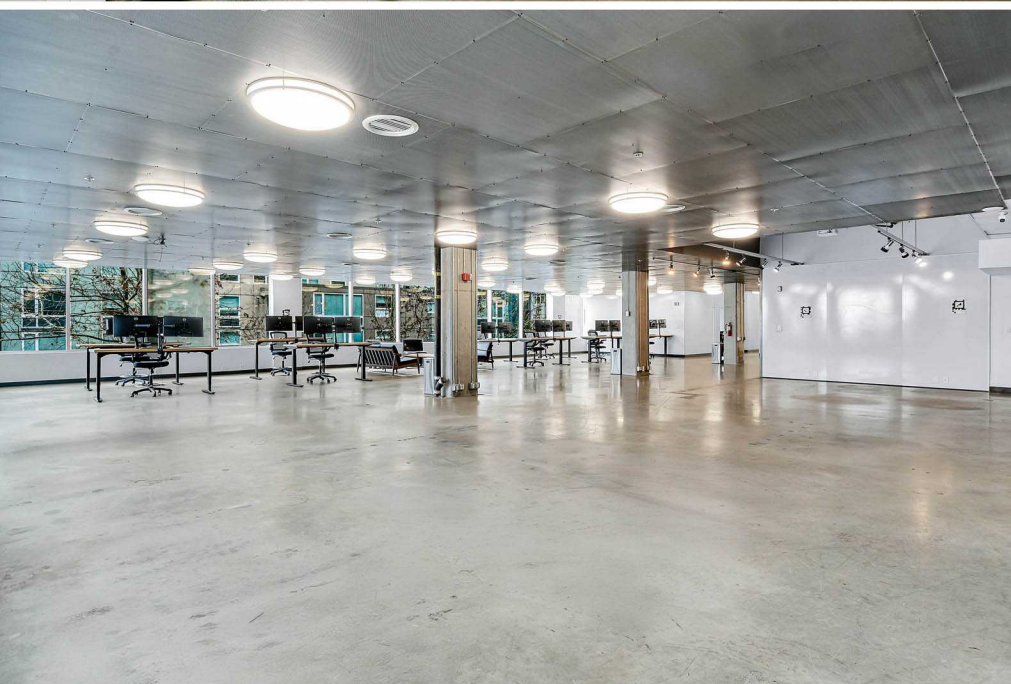
This prime location offers excellent transit access, close proximity to I-5 and SR-99, and is steps from Pike Place Market, the Waterfront, Olympic Sculpture Park, and other top Seattle amenities. Belltown's vibrant mix of restaurants, boutiques, and nightlife makes it one of the city's most dynamic neighborhoods.

FOR SUBLEASE

Master Lease Through:
April 30, 2028



Building Photos



Building Photos

