



For Sublease

Gregg Riva

Executive Vice President
206 595 1525
gregg.riva@colliers.com

Liam O'Kelley

Associate
425 923 0208
liam.okelley@colliers.com

Kendra Mills

Senior Client Services Specialist
425 453 3135
kendra.mills@colliers.com



Colliers

11225 SE 6th Street, Suite 240
Bellevue, WA 98004
colliers.com

Industrial yard and buildings with direct access to/from I-90

30240 SE High Point Way, Issaquah, WA 98027

Property Highlights

Total site size: ±63,400 SF

- Office building: 900 SF
- Office trailer: 300 SF
- Shop: 5,000 SF
- Lean-to: 4,500 SF
- Yard: ±34,250 SF

Sublease Rate: \$20,750/month, gross (net taxes, utilities)

Master Lease expires May 31, 2028

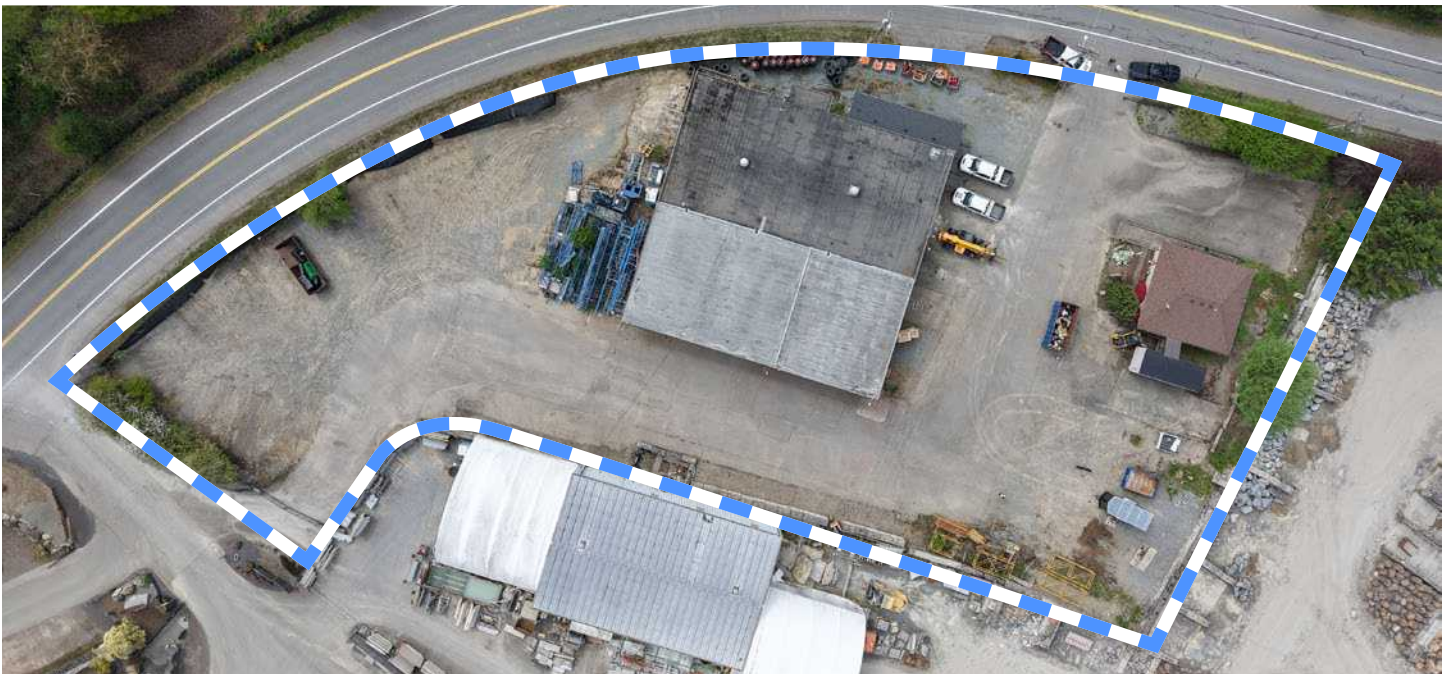
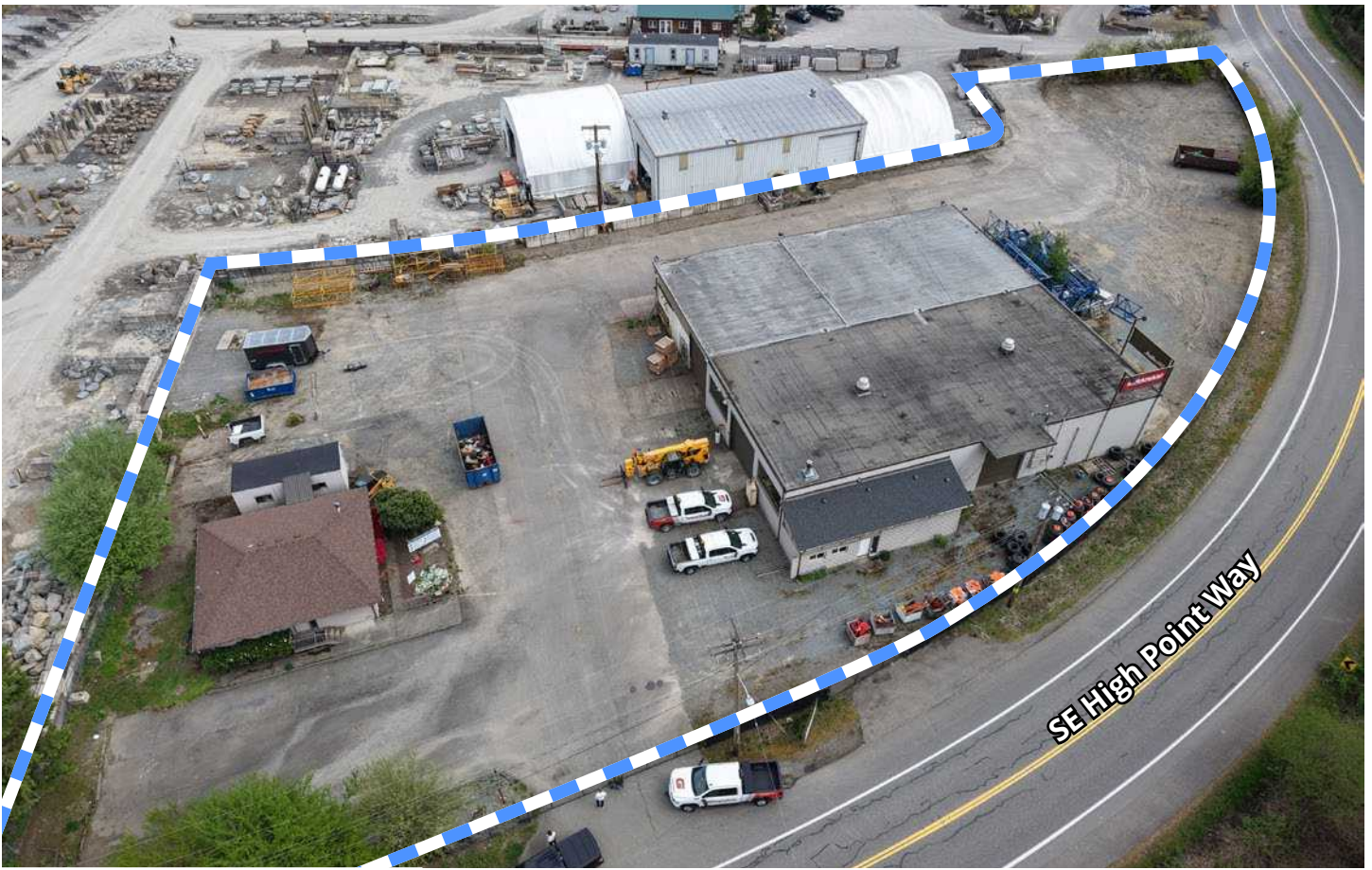
(longer-term, direct deal with landlord possible)



Gregg Riva
Executive Vice President
206 595 1525
gregg.riva@colliers.com

Liam O'Kelley
Associate
425 923 0208
liam.okelley@colliers.com

Kendra Mills
Senior Client Services Specialist
425 453 3135
kendra.mills@colliers.com



Gregg Riva
Executive Vice President
206 595 1525
gregg.riva@colliers.com

Liam O'Kelley
Associate
425 923 0208
liam.okelley@colliers.com

Kendra Mills
Senior Client Services Specialist
425 453 3135
kendra.mills@colliers.com