

FOR LEASE

Office/Retail/Flex



716 S Hill Park Drive

Puyallup, WA 98373

Convenient north Pierce County location at the crown of South Hill, with easy access to SR-512 and South Hill Regional Mall.

PROPERTY HIGHLIGHTS

- + Available Suite: Suite C - 6,502 SF (existing office & medical TI)
- + Generous free parking within large commercial center
Parking Ratio: 3.5/1000
- + Freeway monument and building signage
- + General Commercial (CG) Zoning - multiple uses allowed
- + Traffic Count: ~29,000 cars per day on SR-512
- + CALL LISTING BROKER FOR RATES

KIM MARVIK
Partner
+1 253 203 1325
kmarvik@nai-psp.com

ANDREA PETERSON
Vice President
+1 253 203 1329
apeterson@nai-psp.com

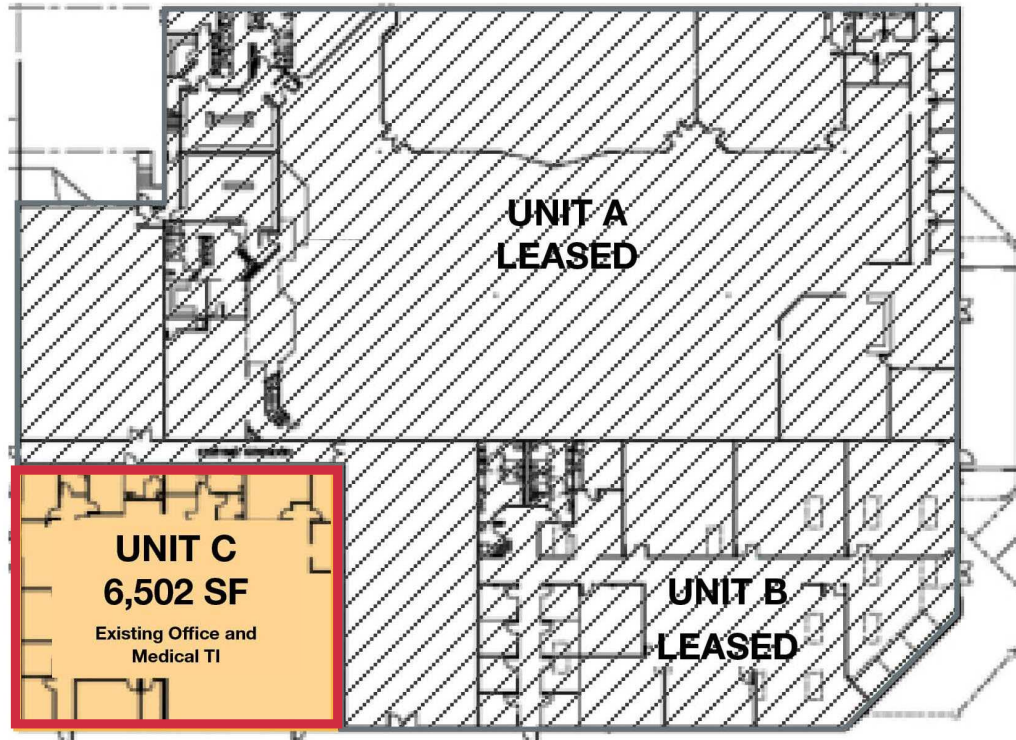
THE INFORMATION CONTAINED HEREIN HAS BEEN GIVEN TO US BY THE OWNER OF THE PROPERTY OR OTHER SOURCES WE DEEM RELIABLE, WE HAVE NO REASON TO DOUBT ITS ACCURACY, BUT WE DO NOT GUARANTEE IT. ALL INFORMATION SHOULD BE VERIFIED PRIOR TO PURCHASE OR LEASE.



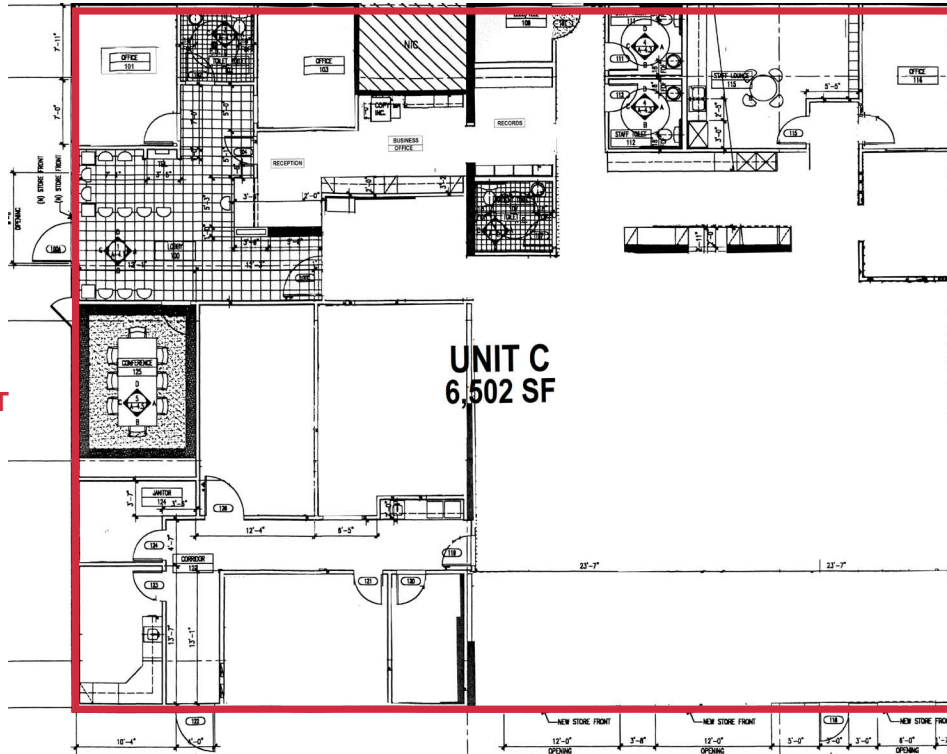
nai-psp.com

Site Plan & Floor Plan

BUILDING SITE PLAN



SUITE C AS-BUILT



KIM MARVIK
Partner
+1 253 203 1325
kmarvik@nai-psp.com

ANDREA PETERSON
Vice President
+1 253 203 1329
apeterson@nai-psp.com



*Office, Retail, Flex
space available at
South Hill, Puyallup*



Retail Entry to Suite C



Suite C Reception Area



Suite C Office/Flex Area



Potential Loading Access



Pylon Sign Facing Highway 512

KIM MARVIK
Partner
+1 253 203 1325
kmarvik@nai-pp.com

ANDREA PETERSON
Vice President
+1 253 203 1329
apeterson@nai-pp.com



Retailer Map



KIM MARVIK

Partner
+1 253 203 1325
kmarvik@nai-psp.com

ANDREA PETERSON

Vice President
+1 253 203 1329
apeterson@nai-psp.com

