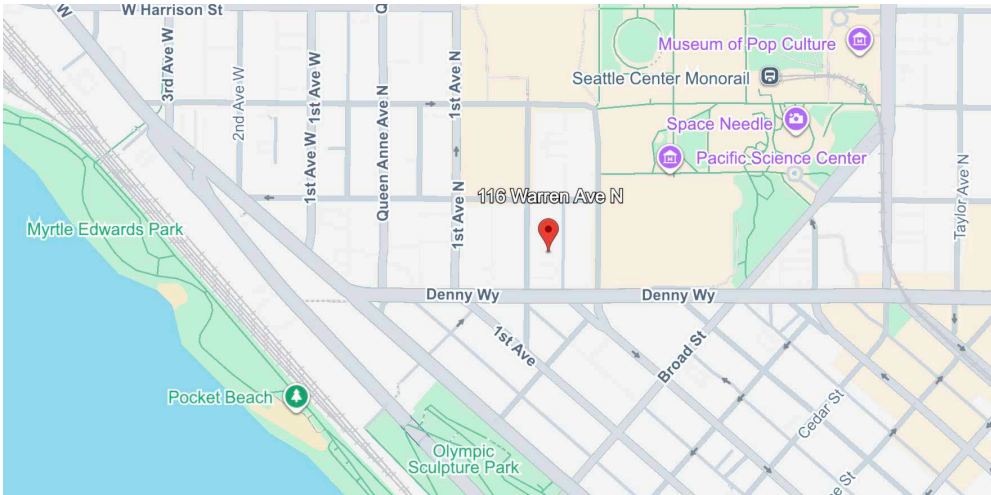


FOR LEASE

SEATTLE CENTER OFFICE SPACE
116 WARREN AVE N, SUITE A | SEATTLE | 98109



PROPERTY FEATURES

- 4,345 SF of office space with multiple private offices, conference space, storage, and full kitchen, and rooftop deck amenity
- Signalized intersections on both adjacent blocks facilitate access to the property from Denny Way without burdening Warren Ave directly.
- Private parking garage with 6 stalls of parking included in rent with private access to the office, with convenient public parking option next door for excess parking needs
- Easy access to over 10 frequent transit lines
- \$25/SF/YR gross



**ANDY
RANDLES**

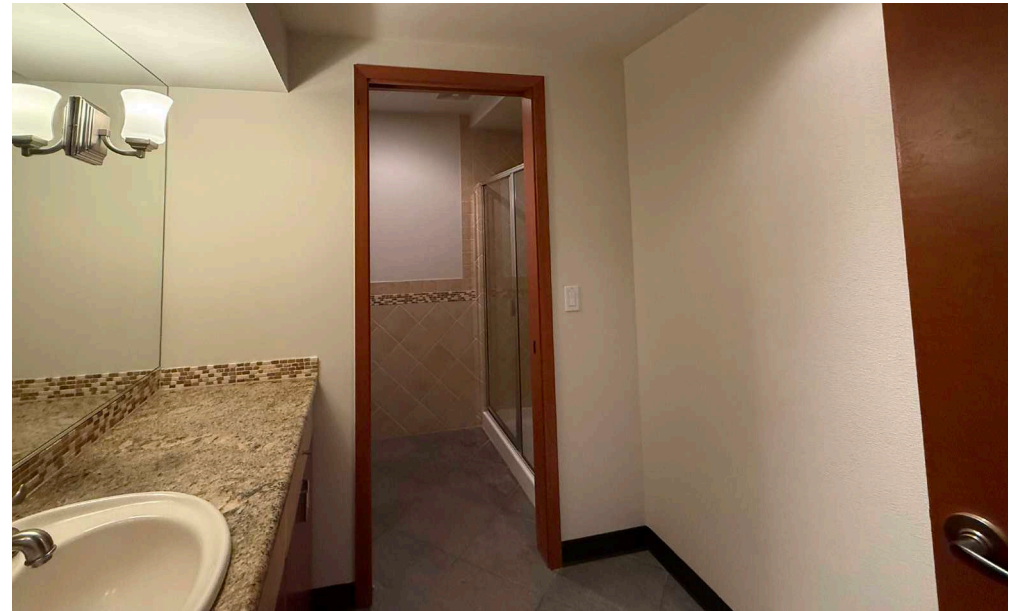
206.405.0090
andy@ewingandclark.com

**CAMERON
KENT**

206.838.7737
ckent@ewingandclark.com

INTERIOR SHOTS

116 WARREN AVE N, SUITE A | SEATTLE | 98109



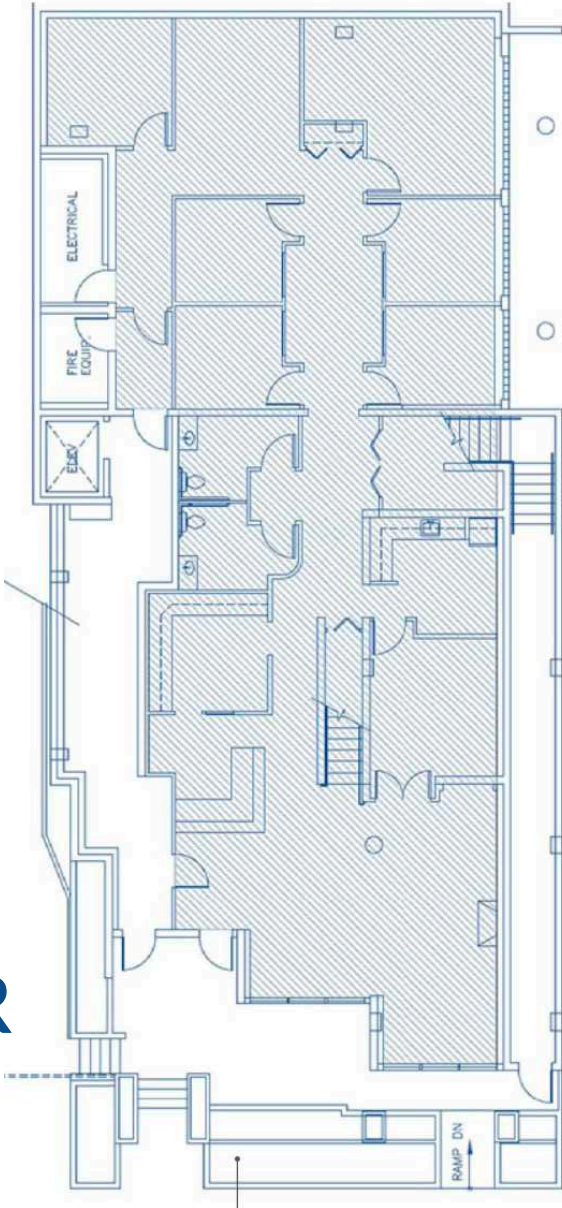
**ANDY
RANGLES** | 206.405.0090
andy@ewingandclark.com

**CAMERON
KENT** | 206.838.7737
ckent@ewingandclark.com

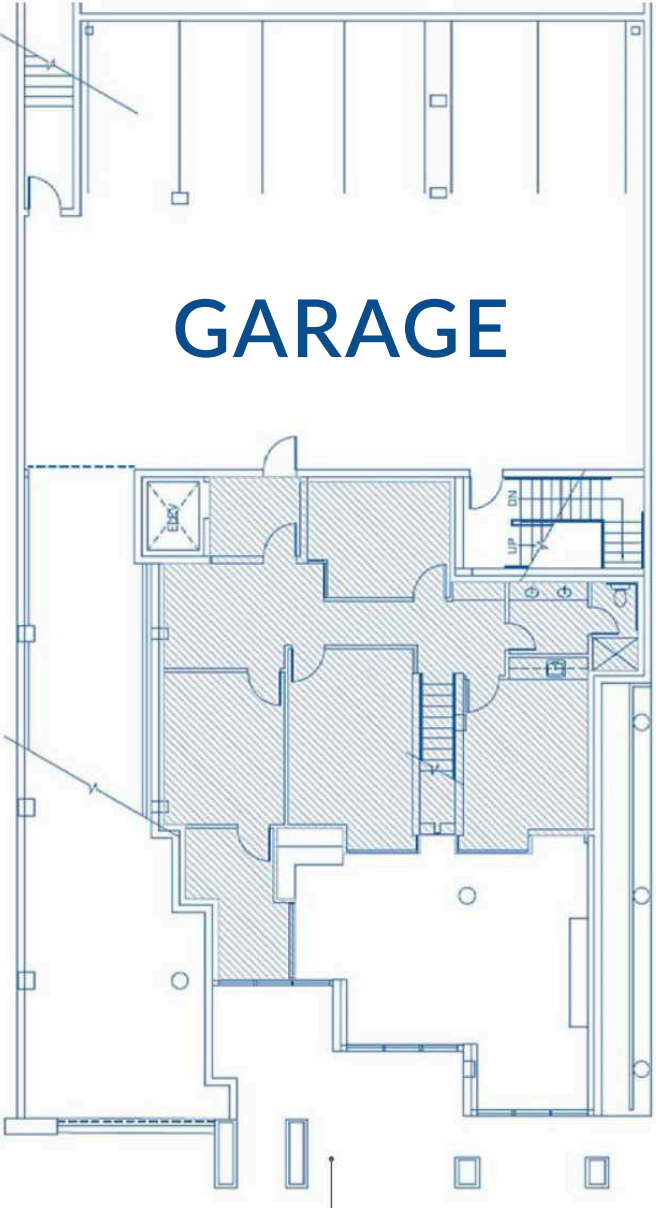
FLOOR PLAN

116 WARREN AVE N, SUITE A | SEATTLE | 98109

1st FLOOR



GARAGE



MEZZANINE

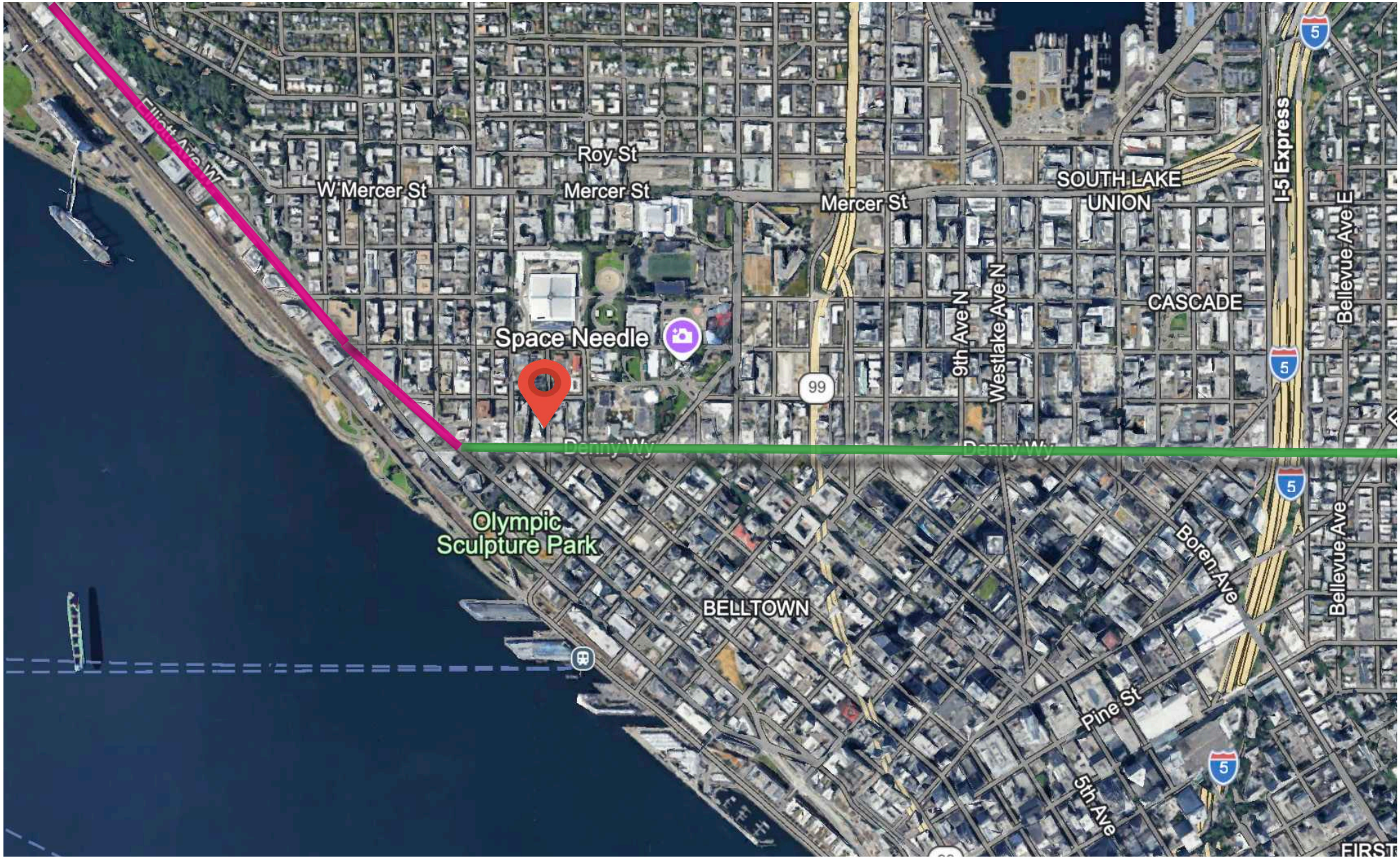


ANDY RANGLES | 206.405.0090
andy@ewingandclark.com

CAMERON KENT | 206.838.7737
ckent@ewingandclark.com

AERIAL MAP

116 WARREN AVE N, SUITE A | SEATTLE | 98109



ANDY RANGLES | 206.405.0090
andy@ewingandclark.com

CAMERON KENT | 206.838.7737
ckent@ewingandclark.com