



Lakewood Logistics Center

7530 150th Street SW Lakewood, WA

 **205,030 SF**
available space

 **36'**
clear height

 **4 Acre Yard**
paved and fenced

 **Dec. 1, 2026**
availability date



Lakewood Logistics Center

Property features and offered space

The Lakewood Logistics Center offers 205,030 SF of Class-A industrial space designed for today's modern logistics users. Strategically positioned less than 1 mile from I-5, it provides seamless access to the Port of Tacoma and the greater Seattle corridor. This facility features 3,160 SF of office space, energy-efficient LED lighting throughout, a 36' clear height, ESFR sprinklers, and 42 dock-high doors.

The site offers 191 car stalls and 29 trailer stalls, with an additional 4 acre yard available that accommodates 154 trailer stalls. The yard area is paved, fenced, and fully lit.



205,030 SF
Available space



3,160 SF
Office space



36'
Clear height



183 stalls
Trailer parking spaces



191 stalls
Car parking spaces



ESFR
Sprinkler System



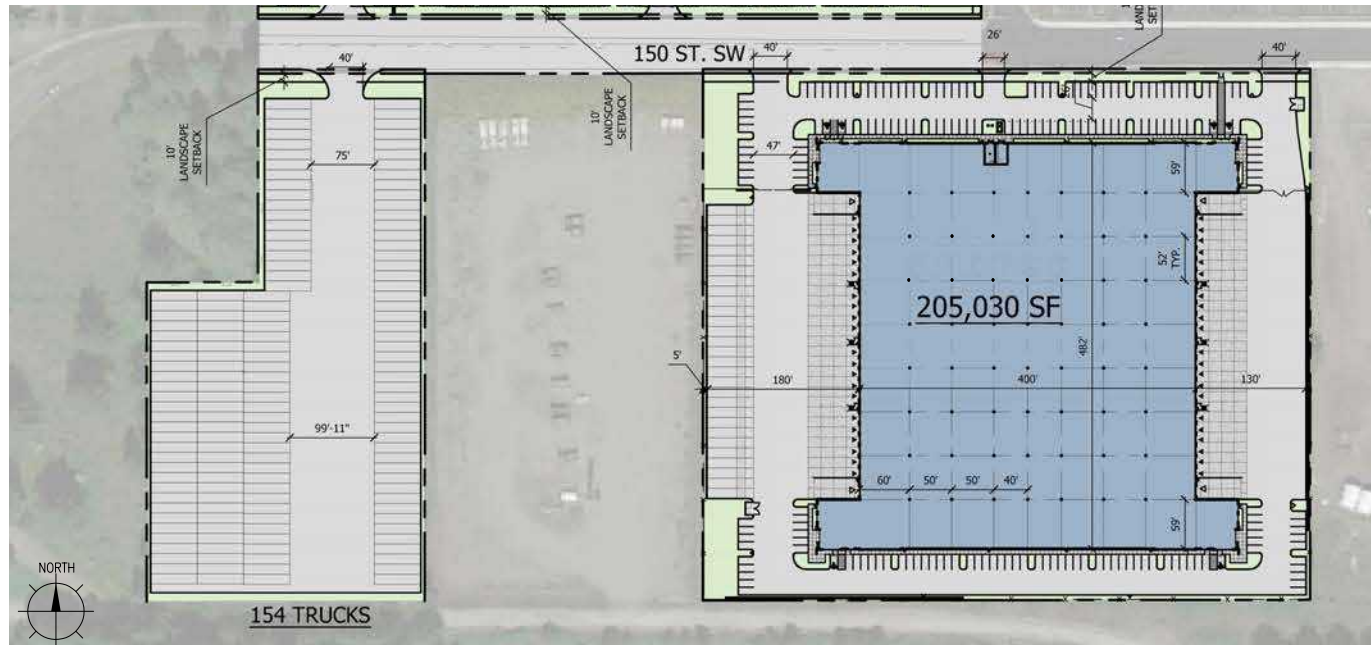
42
Dock-High Doors



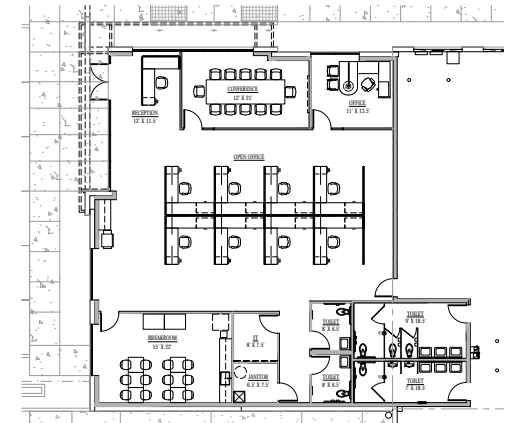
4
Drive-In Doors

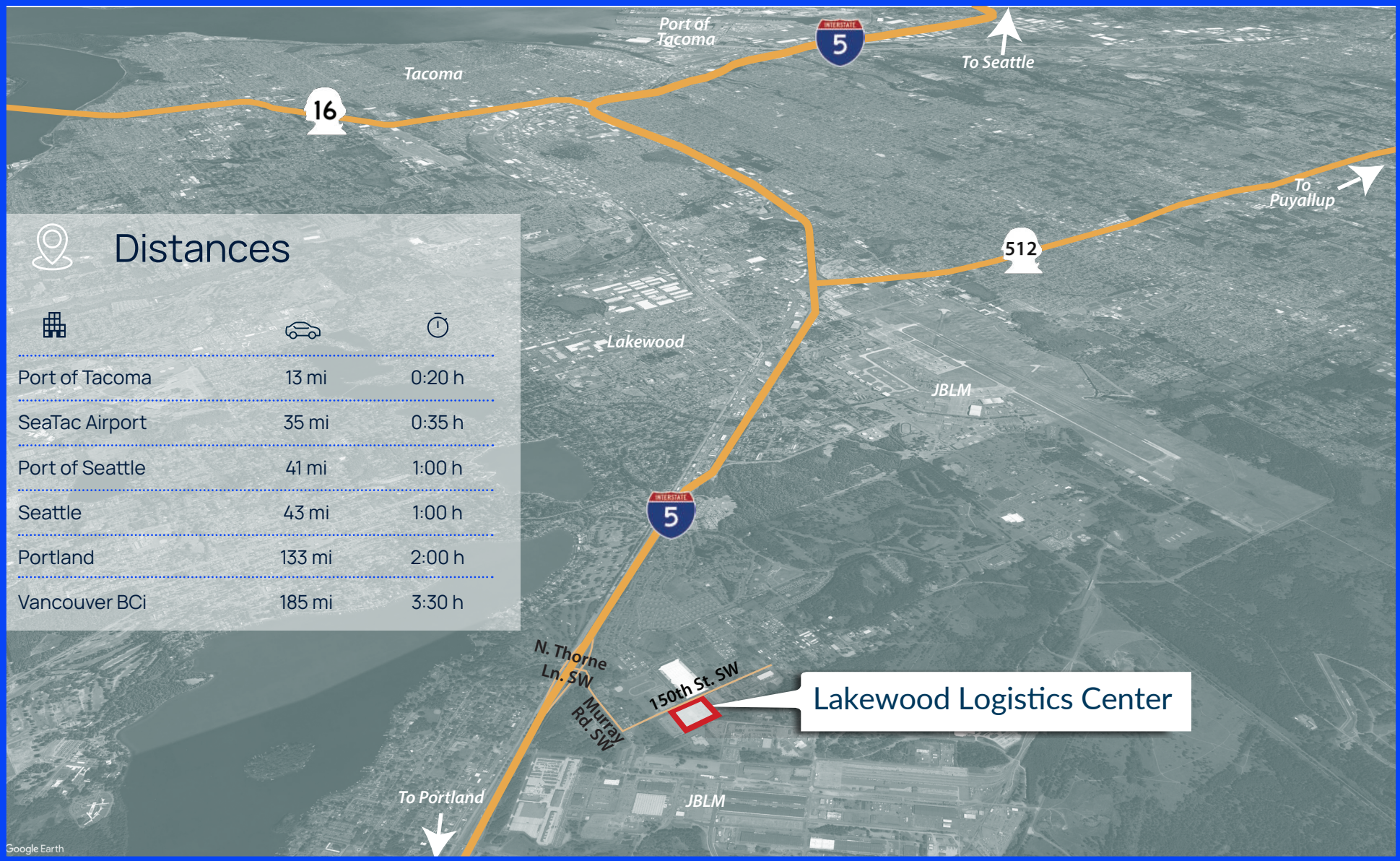


130' - 180'
Truck courts



Office Plan:





Distances



Destination	Distance (mi)	Travel Time (h)
Port of Tacoma	13 mi	0:20 h
SeaTac Airport	35 mi	0:35 h
Port of Seattle	41 mi	1:00 h
Seattle	43 mi	1:00 h
Portland	133 mi	2:00 h
Vancouver BCi	185 mi	3:30 h

Lakewood Logistics Center

Proven track record

of Marq Logistics



Marq Logistics is a global leader in the development and operation of modern logistics facilities and manages a portfolio of approximately 2,000 properties totaling more than 645 million square feet. With a mission to deliver institutional-quality logistics facilities and a consistent, best-in-class experience to customers around the world, Marq's highly specialized and dedicated team provides a powerful combination of global scale with local expertise.

Learn more about Marq at www.marqlogistics.com, and view our current properties at www.us.glp.com.

Wilma Warshak, SIOR

C 206.409.1432
P 206.838.5492r
wilma.warshak@wa-rea.com

Alana Garrett

C 858.722.5627
P 206.838.5492
alana.garrett@wa-rea.com

