

# NORTHWEST PROFESSIONAL BUILDING

OFFICE SPACE FOR LEASE | 9494 N GOVERNMENT WAY | HAYDEN, ID 83835



## CONTACT

**BRENNEN CRAWFORD**  
208.755.0920  
brennen@tokcommercial.com

## HIGHLIGHTS

- Executive Office Spaces Available
- Convenient Hayden Location
- High Traffic Counts
- Signage Right off of Government Way
- Self Storage Units Available

## DETAILS

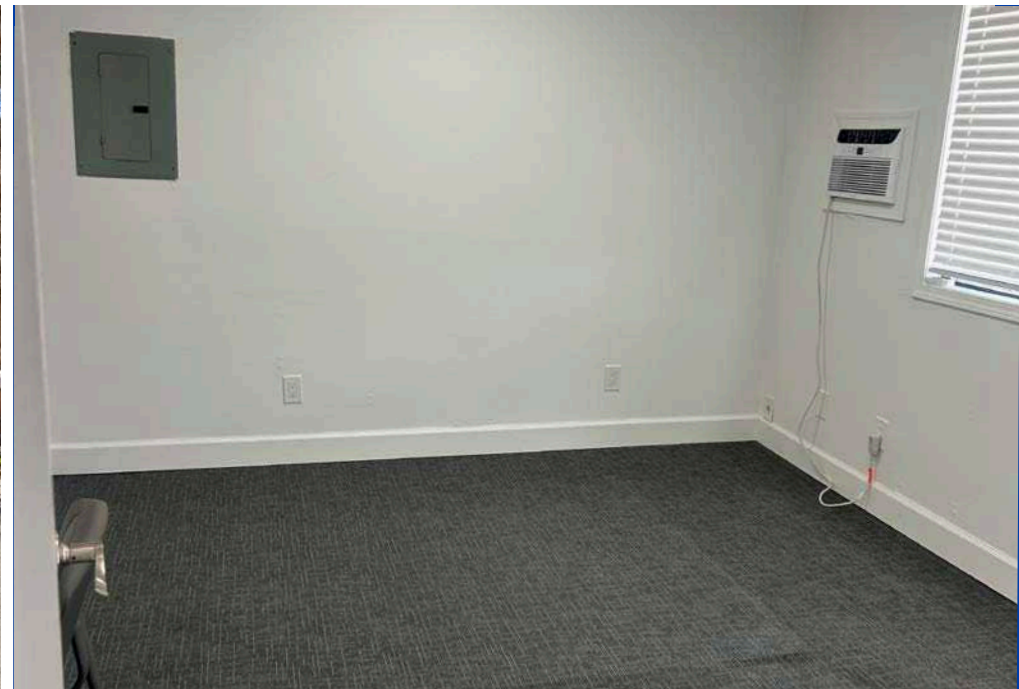
SPACE	SIZE	RATE
Suite 202	220 SF	\$850/Month
<b>BLDG SIZE</b>	6,205 SF	<b>ZONING</b> Hayden-CBD
<b>LOT SIZE</b>	.91 Acres	<b>LEASE TYPE</b> Full Service
<b>YEAR BUILT</b>	1978	

UPDATED: 4.9.2026

THIS PROPERTY IS EXCLUSIVELY MARKETED BY TOK INLAND NORTHWEST LLC DBA TOK COMMERCIAL  
This information was obtained from sources believed reliable but cannot be guaranteed. Any opinions or estimates are used for example only.



**HIGH VISIBILITY SIGNAGE**

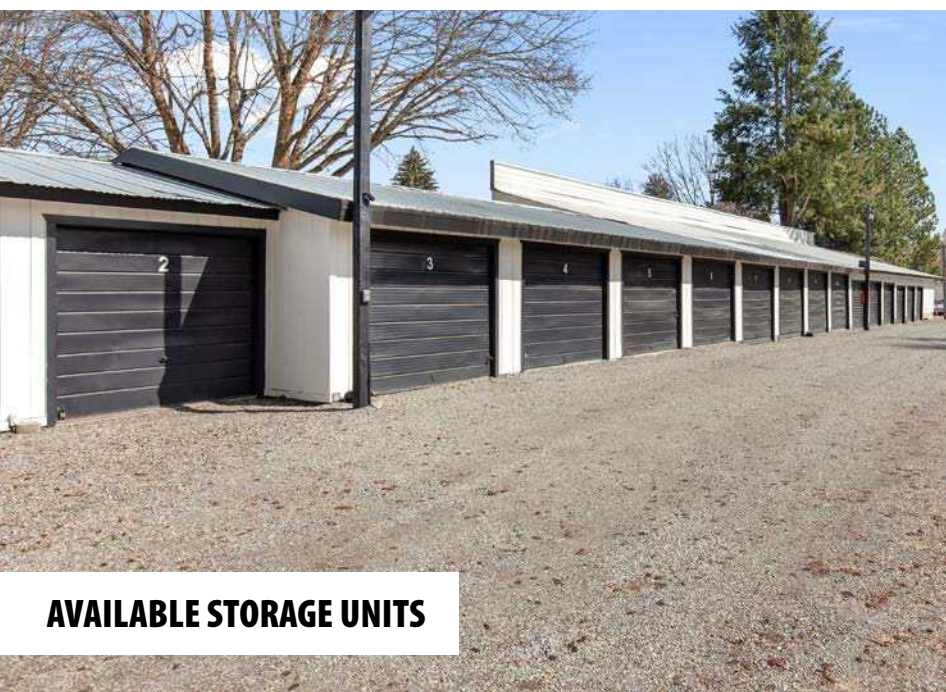


**UPDATED: 4.9.2026**

THIS PROPERTY IS EXCLUSIVELY MARKETED BY TOK INLAND NORTHWEST LLC DBA TOK COMMERCIAL

This information was obtained from sources believed reliable but cannot be guaranteed. Any opinions or estimates are used for example only.

**TOKCOMMERCIAL.COM**



**AVAILABLE STORAGE UNITS**



**UPDATED: 4.9.2026**

THIS PROPERTY IS EXCLUSIVELY MARKETED BY TOK INLAND NORTHWEST LLC DBA TOK COMMERCIAL  
This information was obtained from sources believed reliable but cannot be guaranteed. Any opinions or estimates are used for example only.

# AERIAL MAP

EASY ACCESS FROM GOVERNMENT WAY



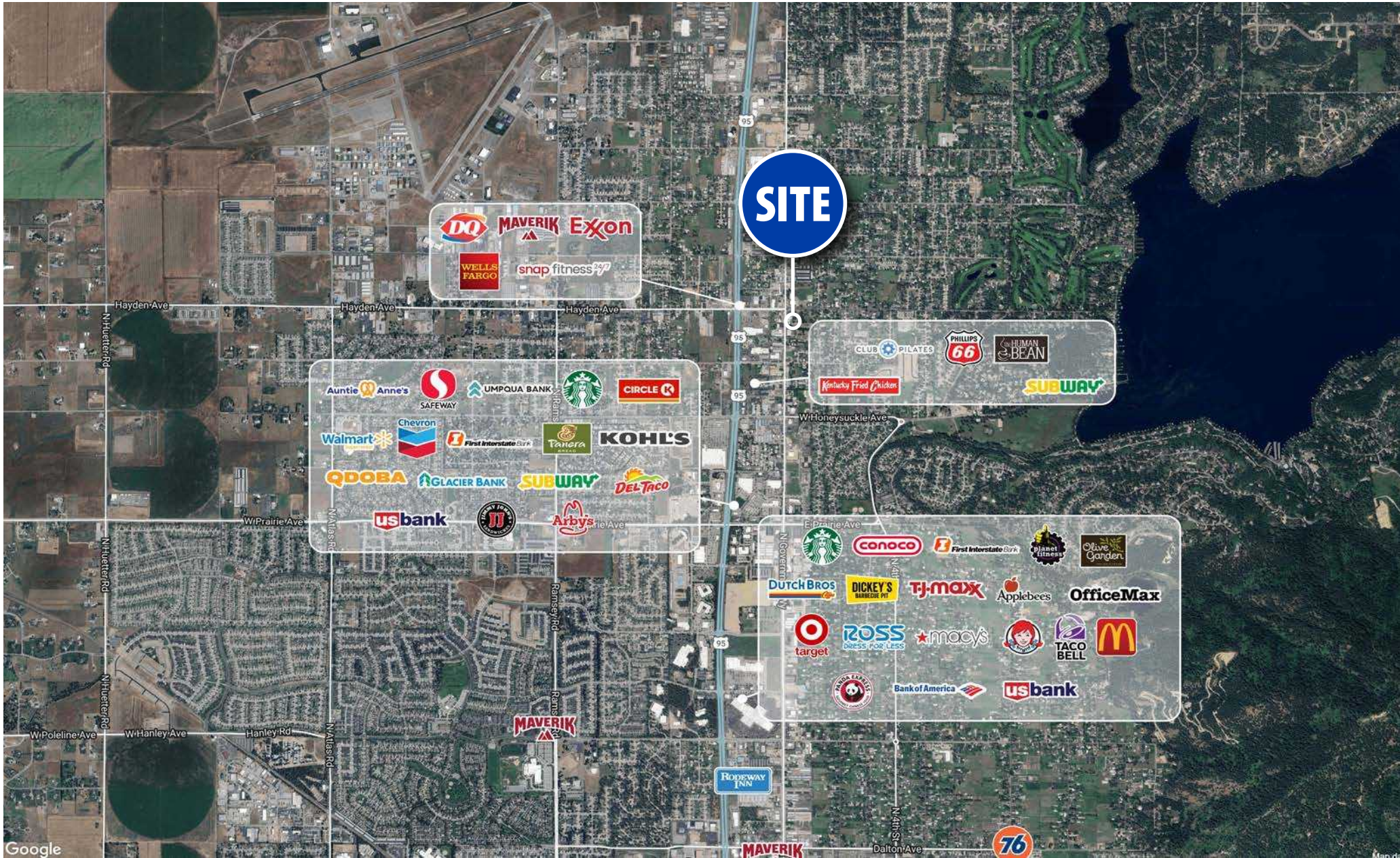
UPDATED: 4.9.2026

THIS PROPERTY IS EXCLUSIVELY MARKETED BY TOK INLAND NORTHWEST LLC DBA TOK COMMERCIAL

This information was obtained from sources believed reliable but cannot be guaranteed. Any opinions or estimates are used for example only.

# RETAILER MAP

EASY ACCESS TO ALL SERVICES



UPDATED: 4.9.2026

THIS PROPERTY IS EXCLUSIVELY MARKETED BY TOK INLAND NORTHWEST LLC DBA TOK COMMERCIAL

This information was obtained from sources believed reliable but cannot be guaranteed. Any opinions or estimates are used for example only.