

UNION TRUST

— BUILDING —

119 SOUTH MAIN ST, SEATTLE, WA

NEWMARK

CAVAN O'KEEFE
206.395.2903
cavan.okeefe@nrmk.com

ANNE MARIE KOEHLER
206.487.5167
annemarie.koehler@nrmk.com

BUILDING HIGHLIGHTS

- Prime Pioneer Square location with immediate access to restaurants, cafés, transit, and waterfront amenities
- Historic brick-and-beam architecture with modern building systems
- High ceilings and exposed interior character throughout
- Steps from the Pioneer Square Station, King Street Station, and multiple parking options
- Walkable to Lumen Field, T-Mobile Park, and Seattle's new waterfront redevelopment



Seattle's New Waterfront





NEARBY AMENITIES

Ferry Terminal

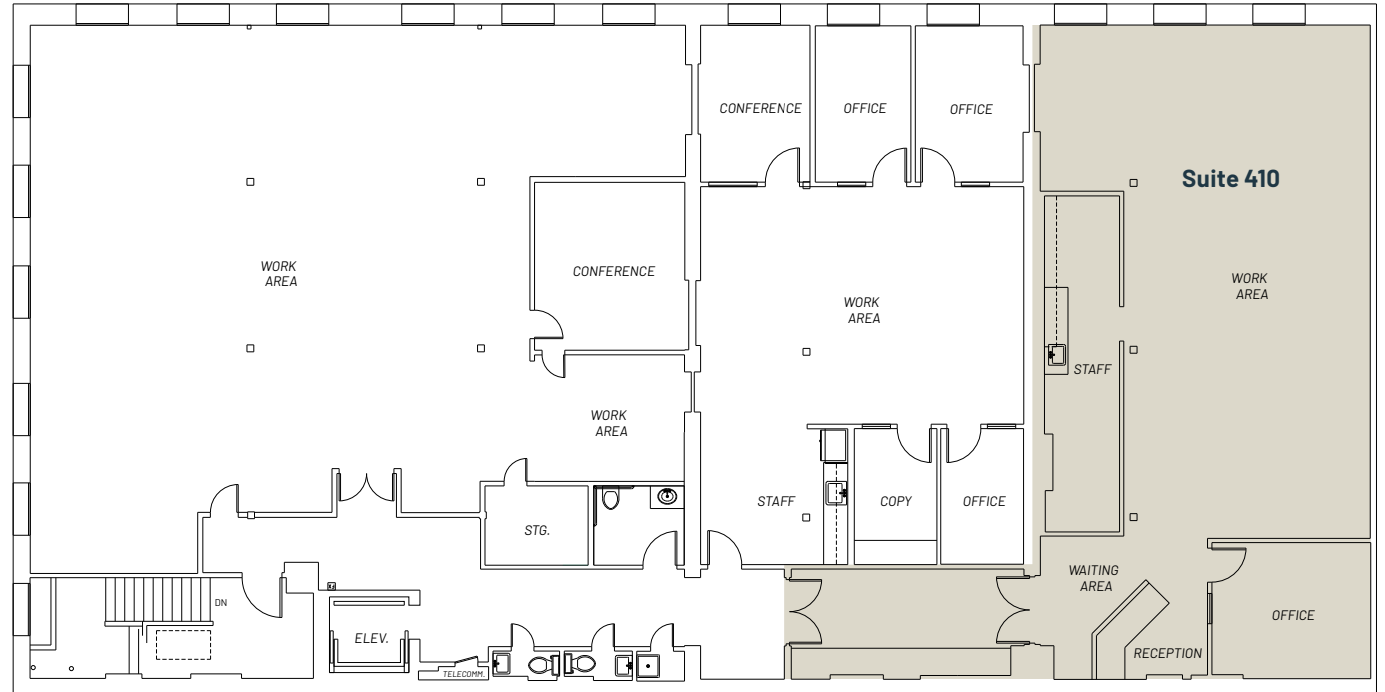


Lumen Field



AVAILABLE SPACES

Suite 410
2,319 SF
Available Now



Inside Suite 410



UNION TRUST

BUILDING

119 SOUTH MAIN ST, SEATTLE, WA

CAVAN O'KEEFE

206.395.2903

cavan.okeefe@nmrk.com

ANNE MARIE KOEHLER

206.487.5167

annemarie.koehler@nmrk.com

NEWMARK

The distributor of this communication is performing acts for which a real estate license is required. The information contained herein has been obtained from sources deemed reliable but has not been verified and no guarantee, warranty or representation, either express or implied, is made with respect to such information. Terms of sale or lease and availability are subject to change or withdrawal without notice. www.nmrk.com | 10756782141 12/25