

Kent Valley 1 Distribution Center

6329 S 226th Street
Suite 101
Kent, Washington



- ❖ 16 DOCK HIGH DOORS-UNIQUE
- ❖ 800 AMPS OF POWER

FOR LEASE

PROPERTY HIGHLIGHTS:

- Rentable Square Feet: 40,991 SF
- Footprint area: 36,216 SF
- First Floor Office 7,280 SF
- Second Floor Office 4,775 SF
- 16 Dock high doors serving 28,936 SF of warehouse
- One over-sized grade level door
- Generous 170' of truck maneuvering
- 24' clear height
- 800 AMPS, 277/480 Volt, 3-Phase power
- Typical column spacing: 24' x 48'
- Bay depth: 120' 3"
- Easy access to I-5 and SR-167
- Premier business park environment
- Available now
- Call brokers for rates

Exclusively Offered By:

LES BOUDWIN, SIOR
Managing Director
+1 206 679 6393
les.boudwin@jll.com

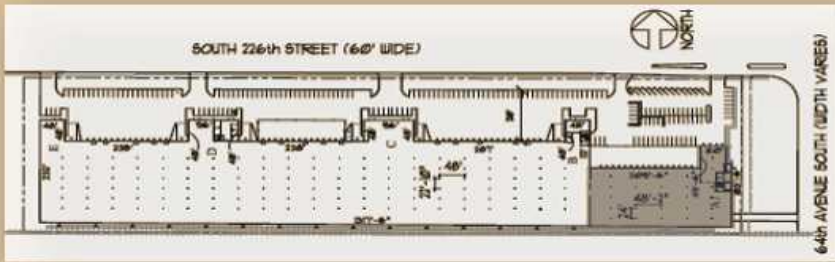
SCOTT CARTER
Managing Director
+1 425 761 5880
scott.carter@jll.com



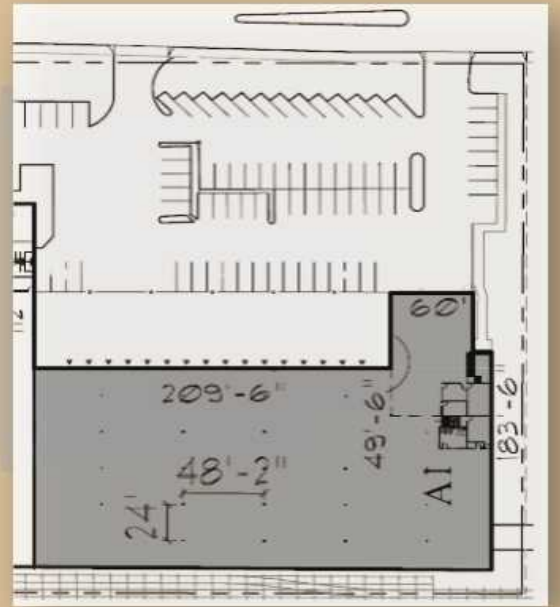
225 108th Avenue NE - Suite 550
Bellevue, WA 98004

www.us.joneslanglasalle.com/seattle

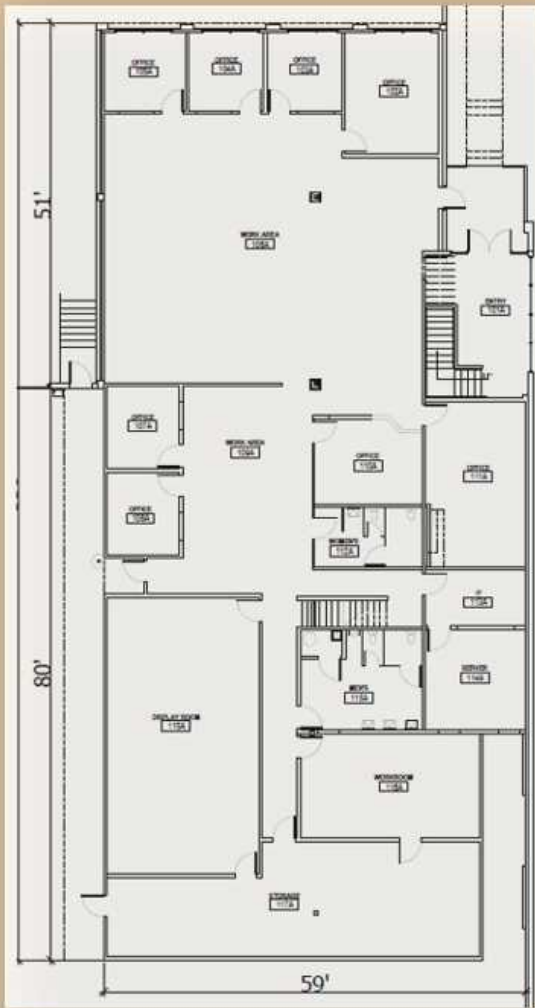




Site Plan



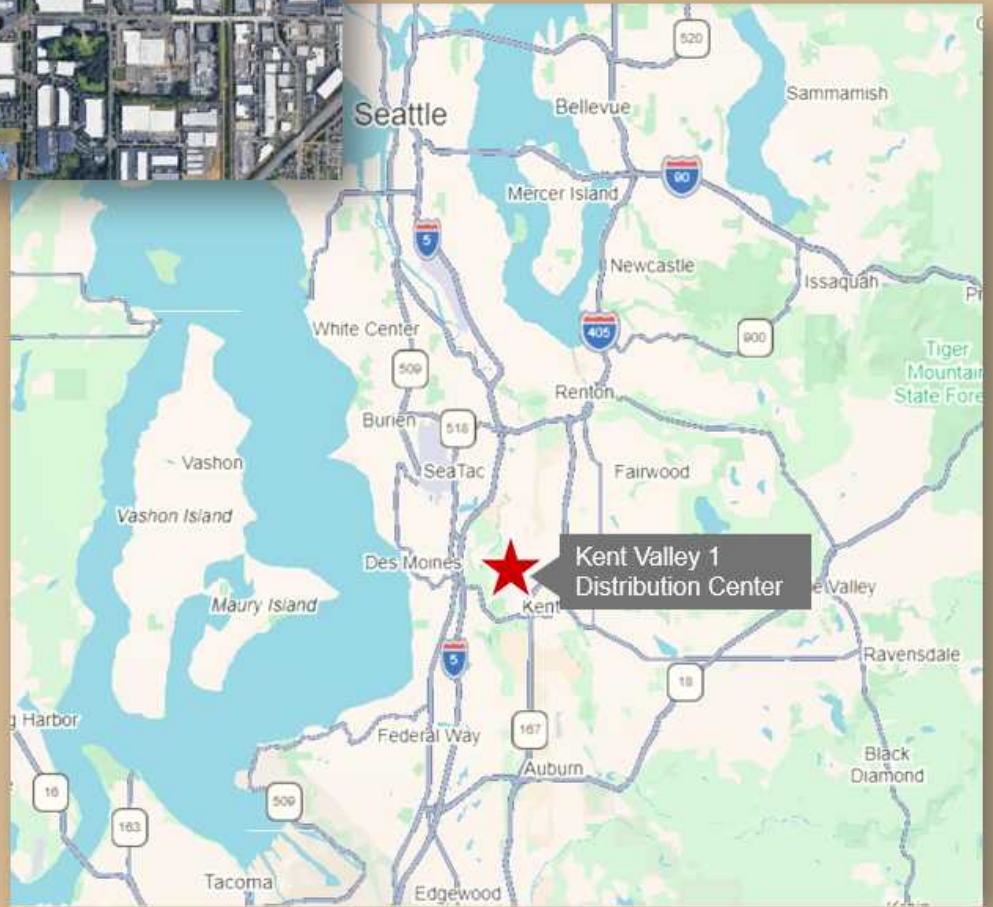
Building East End



Suite 101 - First Floor Plan
7,280 SF



Suite 101 - Second Floor Plan
4,775 SF



Exclusively Offered By:

LES BOUDWIN, SIOR
Managing Director
+1 206 679 6393
les.boudwin@jll.com

SCOTT CARTER
Managing Director
+1 425 761 5880
scott.carter@jll.com



225 108TH AVENUE NE - SUITE 550
BELLEVUE, WA 98004
www.us.joneslanglasalle.com/seattle