



CUSHMAN &  
WAKEFIELD

FOR LEASE

# THE THOMAS CENTER

**Building 1 & 2**

MERCER ISLAND, WA



# Property Highlights

- Free parking stalls
- Visible signage
- Private office/retail spaces available
- Flexible terms
- Heart of Downtown Mercer Island

# Property Availabilities

## 7429 - 7437 SE 27th St., Mercer Island, WA

|                |                       |                |               |
|----------------|-----------------------|----------------|---------------|
| <b>Bldg. 1</b> | Suite 7433 (1,793 SF) | \$38.00/SF, MG | Available Now |
|                | Suite 7437 (1,884 SF) | \$40.00/SF, MG | Available Now |

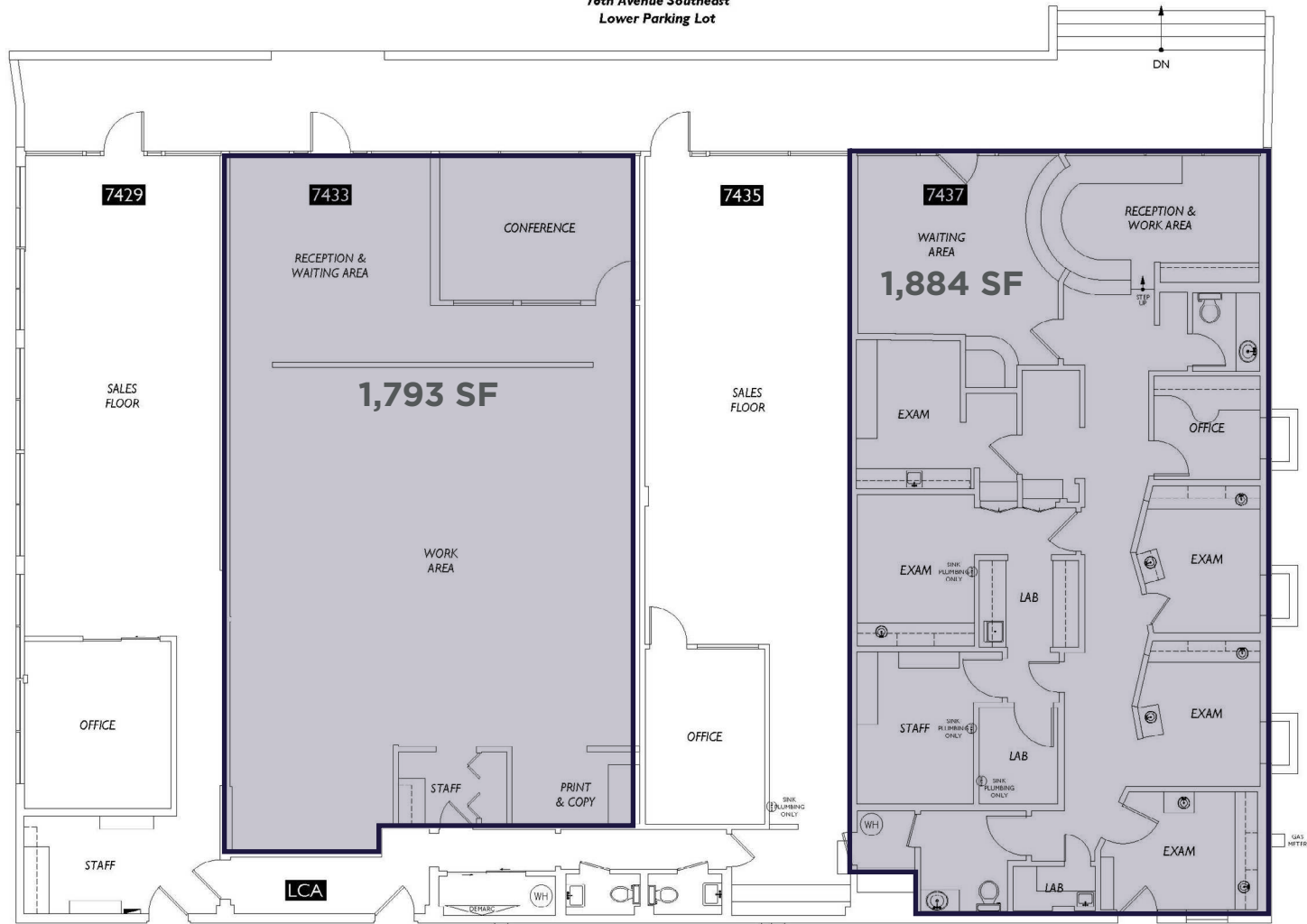
## 2701 - 2711 76th Ave. SE, Mercer Island WA

|                |                     |                   |                          |
|----------------|---------------------|-------------------|--------------------------|
| <b>Bldg. 2</b> | Suite A1 (857 SF)   | \$2,857/month, MG | Available in 30 days     |
|                | Suite A3 (480 SF)   | \$1,538/month, MG | Available within 30 days |
|                | Suite B (1,549 SF)  | \$38.00/SF, MG    | Available Now Available  |
|                | Suite 2709 (793 SF) | \$40.00/SF, MG    | Now                      |

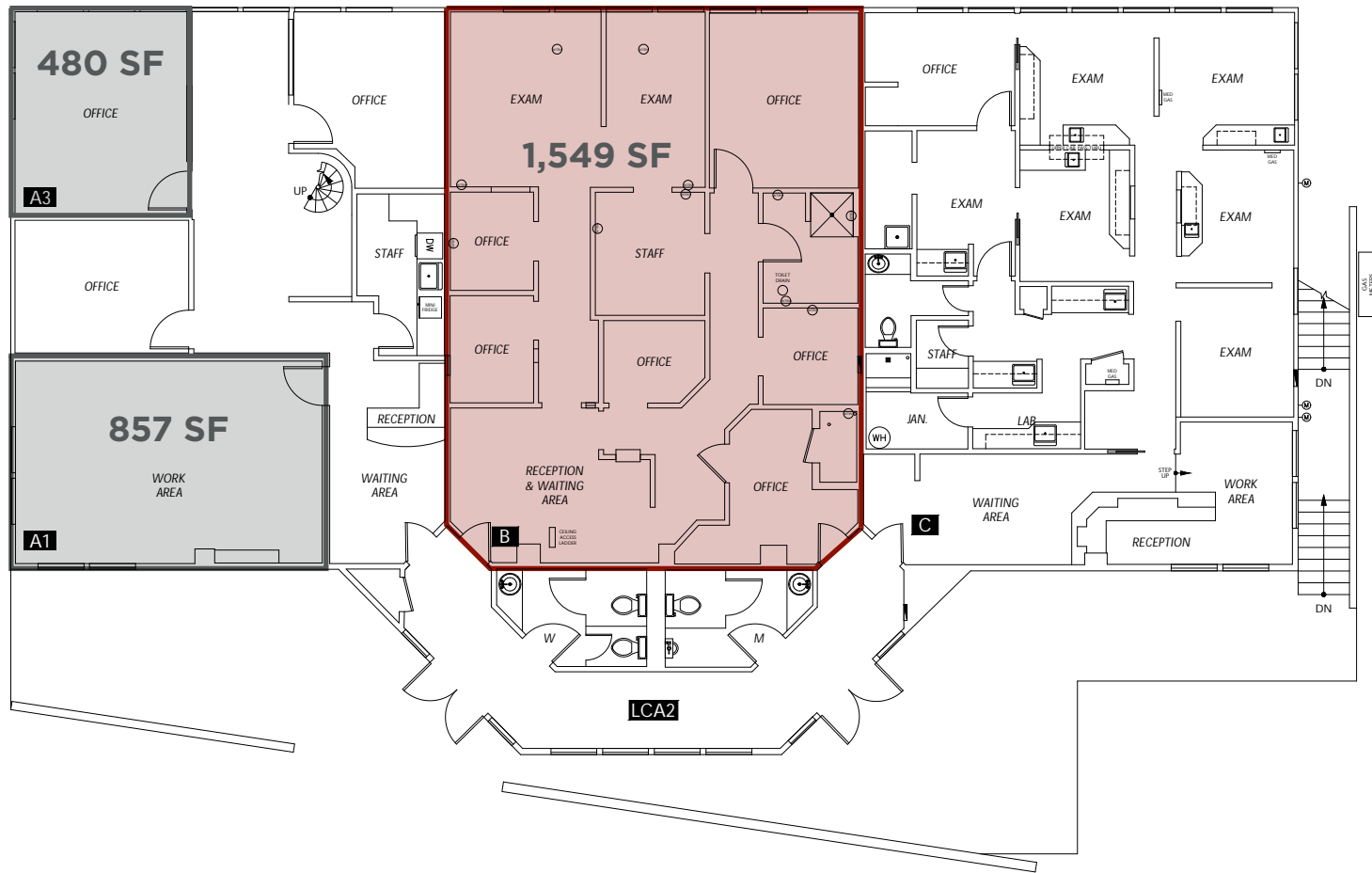
MERCER ISLAND, WA



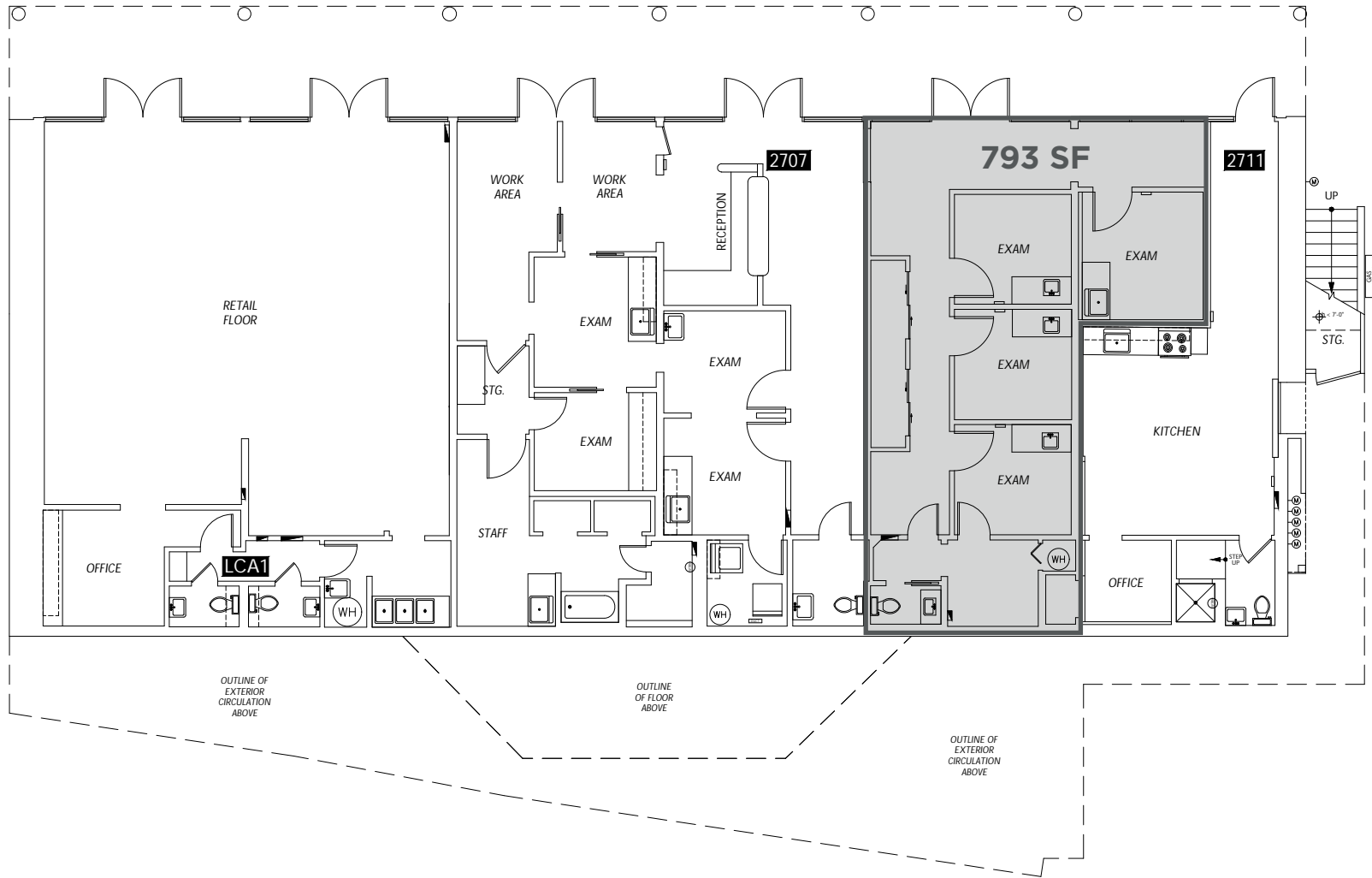
76th Avenue Southeast  
Lower Parking Lot



# Building 1 Floor Plan



# Building 2 Upper Level



# Building 2 Lower Level

# Property Photos

MERCER ISLAND, WA





**5.6 Miles to Downtown Seattle**  
**5.3 Miles to Downtown Bellevue**

# Aerial Map

MERCER ISLAND, WA



601 Union Street  
Seattle, Washington 98101  
+1 206 682 0666  
[cushmanwakefield.com](http://cushmanwakefield.com)

## **Ellen Akopyan**

**Associate**

+1 206 800 1788

[ellen.akopyan@cushwake.com](mailto:ellen.akopyan@cushwake.com)

## **Andrew Shultz**

**Senior Director**

+1 206 215 1645

[andrew.shultz@cushwake.com](mailto:andrew.shultz@cushwake.com)