

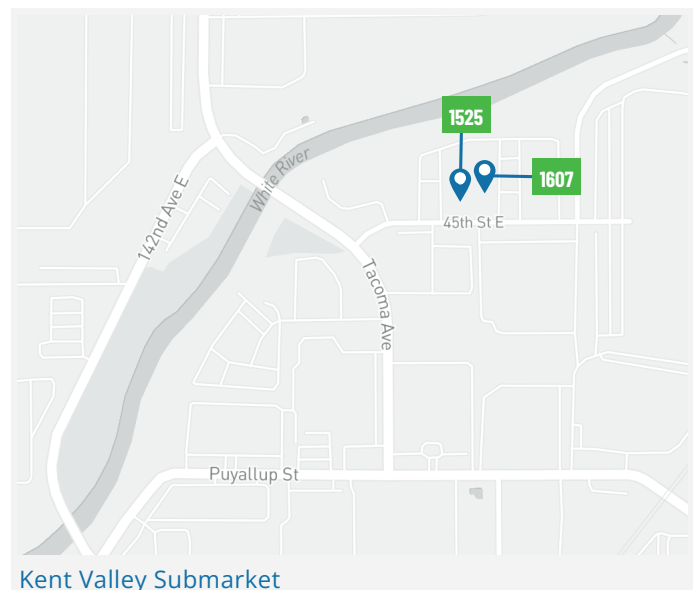


# FOR LEASE

## 1607 45TH ST E, SUMNER, WA 98390

### Property Highlights

- Sumner warehouse and office
- 25,856 total SF
- 4,640 SF first floor office
- 4,164 SF second floor office/storage
- Stand-alone, single-loaded building
- 4 dock doors
- 4 grade level doors
- 20' clear height
- Ample parking
- Available June 1, 2026
- Can be leased with Building 1525 (20,795 SF)
- Available June 1, 2026 - call brokers for rates



### For Leasing Information:

Zac Snedeker  
+1 425 444 0133  
zac.snedeker@cbre.com

Andrew Stark  
+1 206 310 9044  
andrew.stark@cbre.com

Andrew Hitchcock  
+1 206 790 2211  
andrew.hitchcock@cbre.com

Leased by:

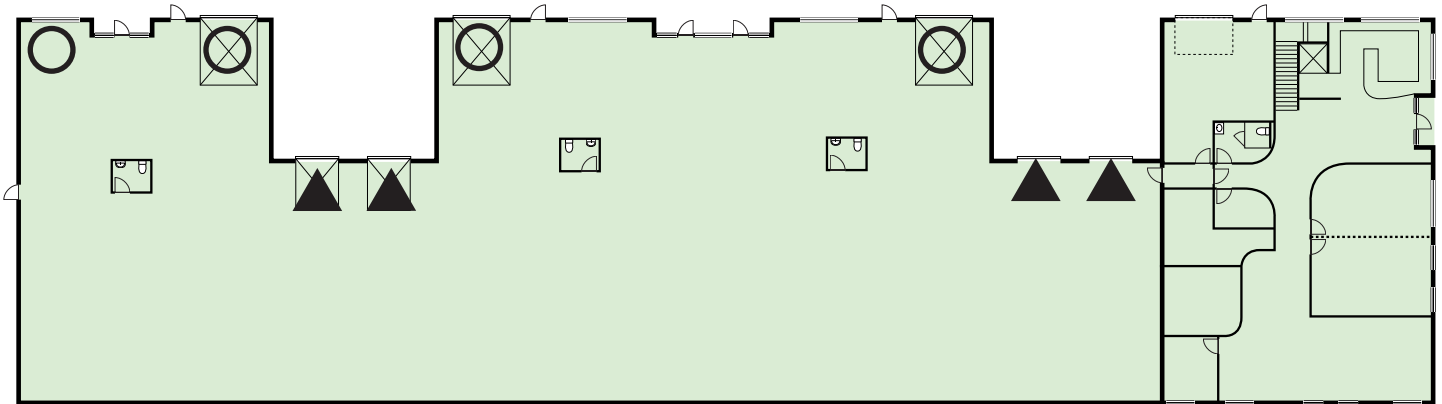
**CBRE**

Owned by:

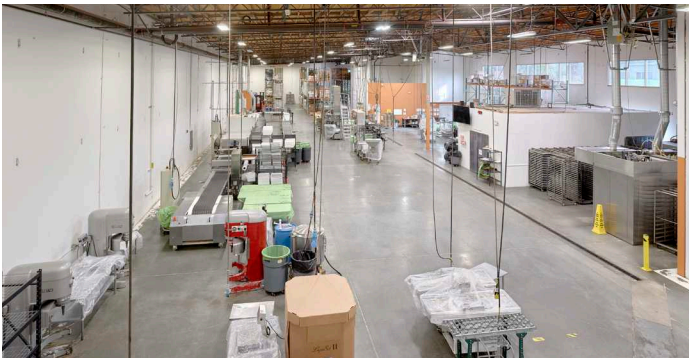
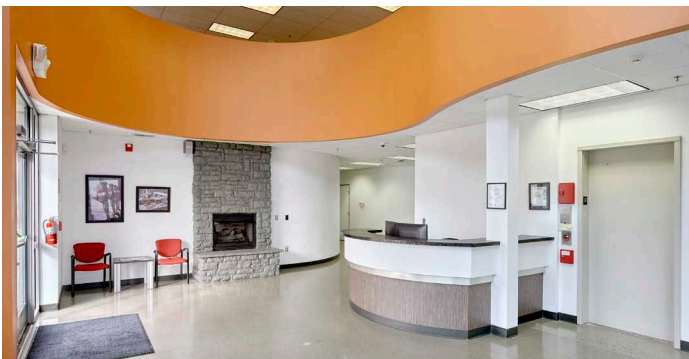
**BLP** BRIDGE  
LOGISTICS  
PROPERTIES

# FOR LEASE

1607 45TH ST E, SUMNER, WA 98390



▲ Dock High Door      ○ Grade Level Door



## For Leasing Information:

Zac Snedeker  
+1 425 444 0133  
zac.snedeker@cbre.com

Andrew Stark  
+1 206 310 9044  
andrew.stark@cbre.com

Andrew Hitchcock  
+1 206 790 2211  
andrew.hitchcock@cbre.com

Leased by:

**CBRE**

Owned by:

**BLP** BRIDGE  
LOGISTICS  
PROPERTIES

© 2026 CBRE, Inc. All rights reserved. This information has been obtained from sources believed reliable but has not been verified for accuracy or completeness. CBRE, Inc. makes no guarantee, representation or warranty and accepts no responsibility or liability as to the accuracy, completeness, or reliability of the information contained herein. You should conduct a careful, independent investigation of the property and verify all information. Any reliance on this information is solely at your own risk. CBRE and the CBRE logo are service marks of CBRE, Inc. All other marks displayed on this document are the property of their respective owners, and the use of such marks does not imply any affiliation with or endorsement of CBRE. Photos herein are the property of their respective owners. Use of these images without the express written consent of the owner is prohibited.

*Bridge does not have the responsibility to update the information to account for changes and makes no representation or warranty, expressed or implied, with respect to the accuracy or completeness of any of the information contained herein.*