

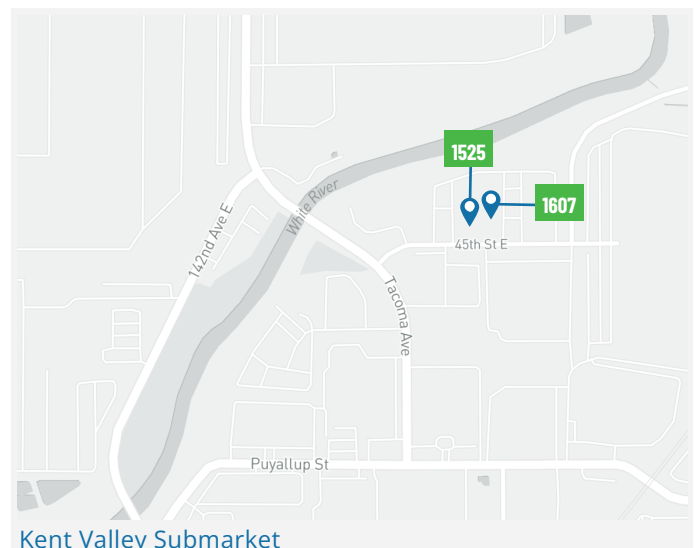


FOR LEASE

1525 45TH STREET E, SUMNER, WA 98390

Property Highlights

- Sumner warehouse and office
- 20,795 total SF with 5,333 SF office on two floors
- Stand-alone, single-loaded building
- 4 dock doors
- 4 grade level doors
- 20' clear height
- Ample parking
- Can be leased with Building 1607 (25,586 SF)
- Available now - call brokers for rates



For Leasing Information:

Zac Snedeker
+1 425 444 0133
zac.snedeker@cbre.com

Andrew Stark
+1 206 310 9044
andrew.stark@cbre.com

Andrew Hitchcock
+1 206 790 2211
andrew.hitchcock@cbre.com

Leased by:

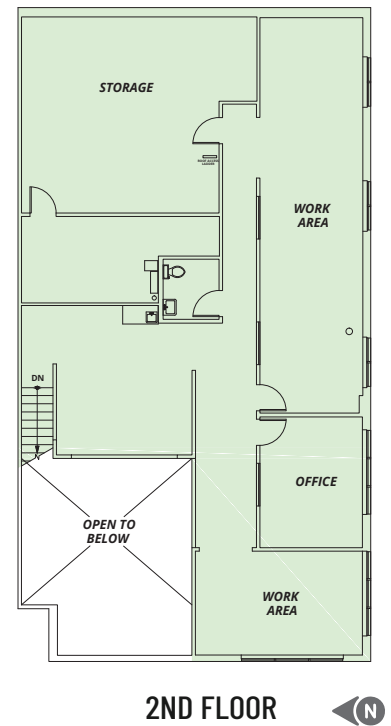
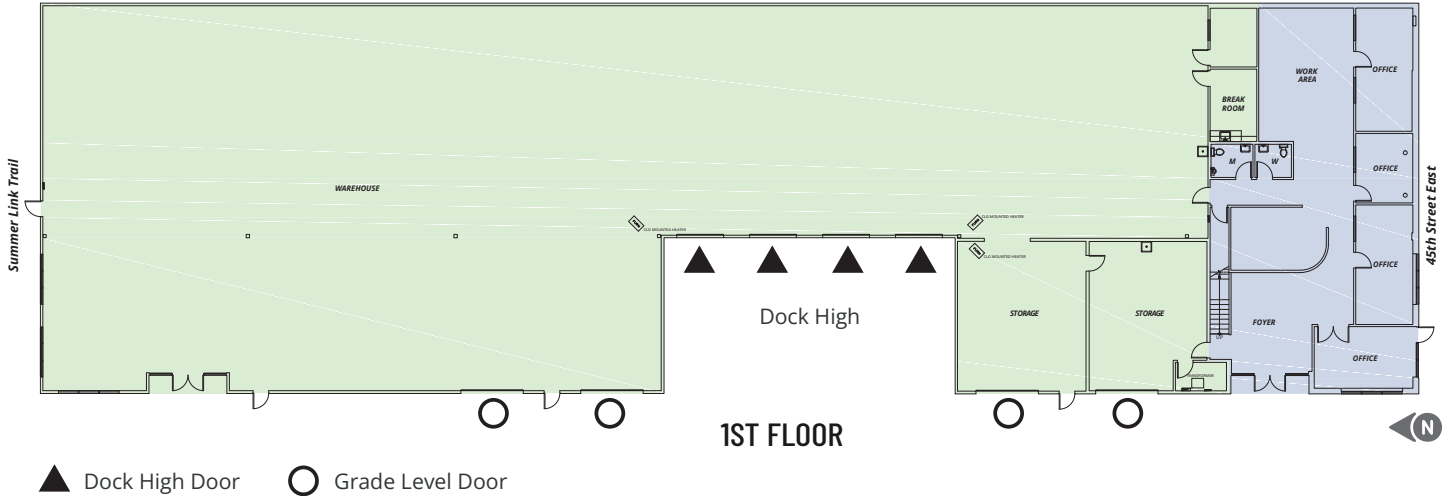
CBRE

Owned by:

BLP BRIDGE
LOGISTICS
PROPERTIES

FOR LEASE

1525 45TH STREET E, SUMNER, WA 98390



For Leasing Information:

Zac Snedeker
+1 425 444 0133
zac.snedeker@cbre.com

Andrew Stark
+1 206 310 9044
andrew.stark@cbre.com

Andrew Hitchcock
+1 206 790 2211
andrew.hitchcock@cbre.com

Leased by:



Owned by:



© 2026 CBRE, Inc. All rights reserved. This information has been obtained from sources believed reliable but has not been verified for accuracy or completeness. CBRE, Inc. makes no guarantee, representation or warranty and accepts no responsibility or liability as to the accuracy, completeness, or reliability of the information contained herein. You should conduct a careful, independent investigation of the property and verify all information. Any reliance on this information is solely at your own risk. CBRE and the CBRE logo are service marks of CBRE, Inc. All other marks displayed on this document are the property of their respective owners, and the use of such marks does not imply any affiliation with or endorsement of CBRE. Photos herein are the property of their respective owners. Use of these images without the express written consent of the owner is prohibited.

Bridge does not have the responsibility to update the information to account for changes and makes no representation or warranty, expressed or implied, with respect to the accuracy or completeness of any of the information contained herein.