

# Available Spaces



## East Building

TOUR	FLOOR	SUITE	RSF	AVAILABILITY
	2	<a href="#">209</a>	7,158	Now
	2	<a href="#">210</a>	1,739	Now
	2	<a href="#">211</a>	1,439	Now
	7	<a href="#">700</a>	21,262	Now
	8	<a href="#">800</a>	21,262	Now
	10	<a href="#">1000</a>	11,615	Now
	10	<a href="#">1050</a>	9,647	12/1/26
	11	<a href="#">1100</a>	7,042	Now
	11	<a href="#">1130</a>	3,624	Now
	11	<a href="#">1140</a>	4,313	Now
	12	<a href="#">1200</a>	21,053	Now
	13	<a href="#">1350</a>	2,751	Now
	15	<a href="#">1500</a>	21,615	Now
	16	<a href="#">1600</a>	21,615	Now
	17	<a href="#">1700</a>	21,615	Now
	20	<a href="#">2000 A1</a>	5,614	Now
	20	<a href="#">2000 A2</a>	4,958	Now
	20	<a href="#">2000 (A1/A2)</a>	10,573	Now

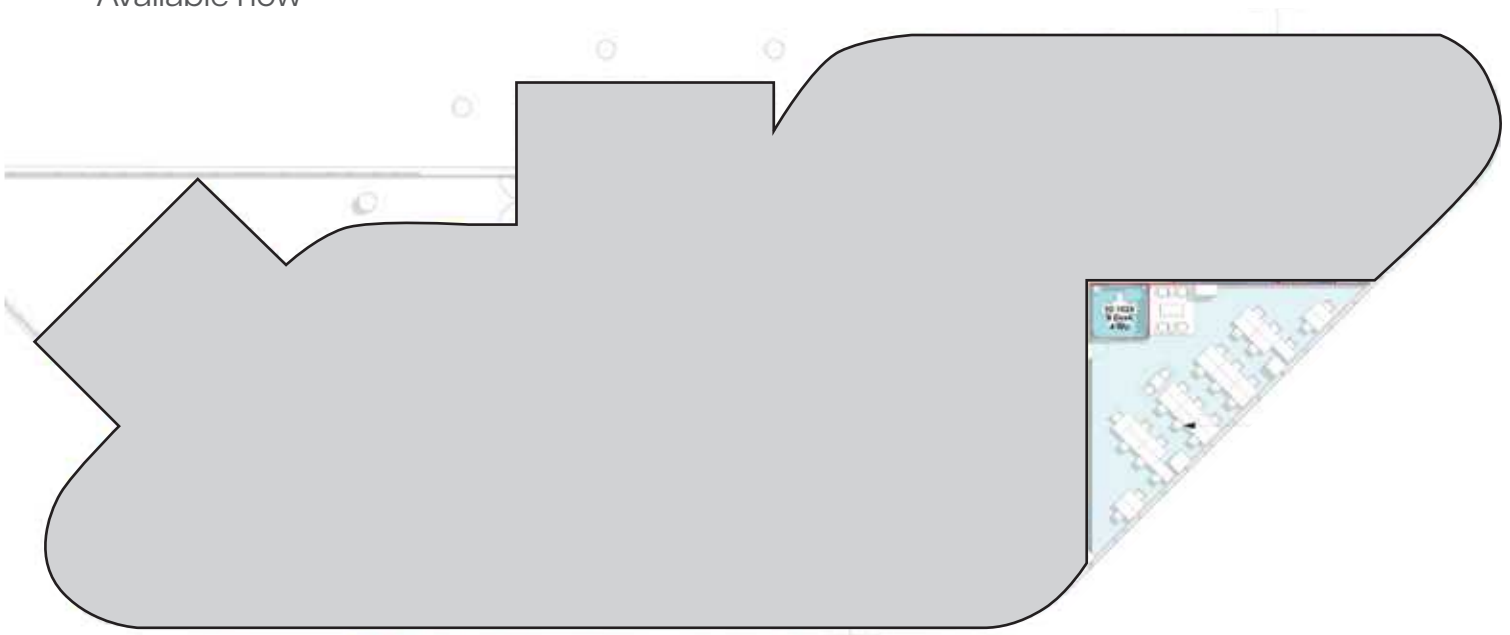
## West Building


TOUR	FLOOR	SUITE	RSF	AVAILABILITY
	1	<a href="#">102</a>	5,372	Now
	1	<a href="#">150</a>	5,573	Now
	4	<a href="#">400</a>	21,214	Now
	5	<a href="#">500</a>	21,217	Now
	6	<a href="#">600</a>	21,190	Now
	7	<a href="#">700</a>	21,211	Now
	8	<a href="#">800</a>	13,446	Now
	9	<a href="#">910</a>	5,615	Now
	9	<a href="#">930</a>	2,946	7/23/26
	9	<a href="#">940</a>	2,748	Now
	9	<a href="#">950</a>	4,123	Now
	10	<a href="#">1000</a>	7,877	Now
	10	<a href="#">1030</a>	13,334	Now
	11	<a href="#">1100</a>	11,078	Now
	11	<a href="#">1150</a>	9,569	Now
	12	<a href="#">1200</a>	8,579	Now
	12	<a href="#">1225</a>	5,488	Now
	15	<a href="#">1550</a>	4,435	Now
	15	<a href="#">1580</a>	13,505	Now
	16	<a href="#">1600</a>	20,965	Now
	17	<a href="#">1700</a>	16,474	Now
	18	<a href="#">1800</a>	9,295	Now



# Suite 210

- 1,739 RSF
- Plug & play, former WeWork
- Access to shared kitchen on floor
- Directly adjacent to Met Club East amenity space and fitness center
- Available now

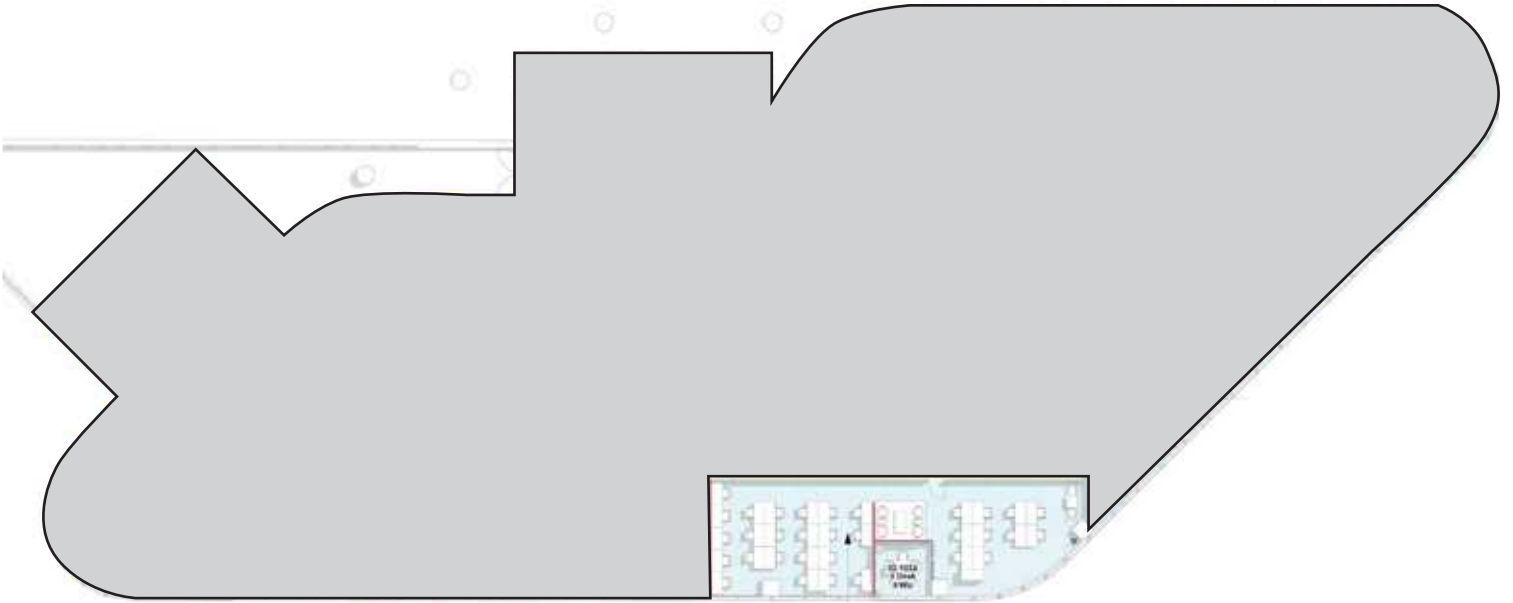


 **BACK TO AVAILABLE SPACE**

1100 Olive Way / 1730 Minor Avenue Seattle WA 98101  
[metparkseattle.com](http://metparkseattle.com)

# Suite 211

- 1,439 RSF
- Plug & play, former WeWork
- Access to shared kitchen on floor
- Directly adjacent to Met Club East amenity space and fitness center
- Available now



**BACK TO AVAILABLE SPACE**

1100 Olive Way / 1730 Minor Avenue Seattle WA 98101  
[metparkseattle.com](http://metparkseattle.com)



# Suite 800

- 21,262 RSF
- Move-in ready with furniture
- Available Now

**VIRTUAL TOUR**



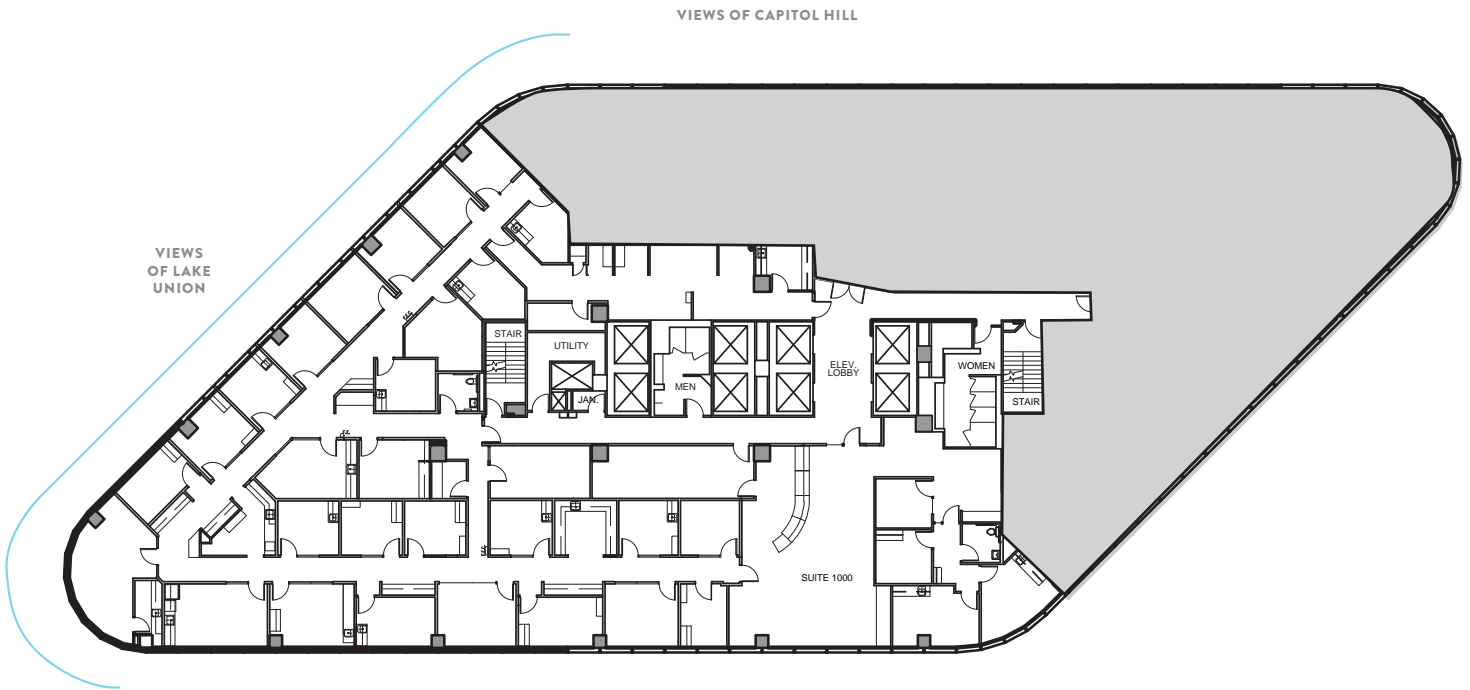
**BACK TO AVAILABLE SPACE**

1100 Olive Way / 1730 Minor Avenue Seattle WA 98101  
[metparkseattle.com](http://metparkseattle.com)

# Suite 1000

- 11,615 RSF
- Second generation clinic space with existing plumbing and exam rooms
- Available Now

 **VIRTUAL TOUR**

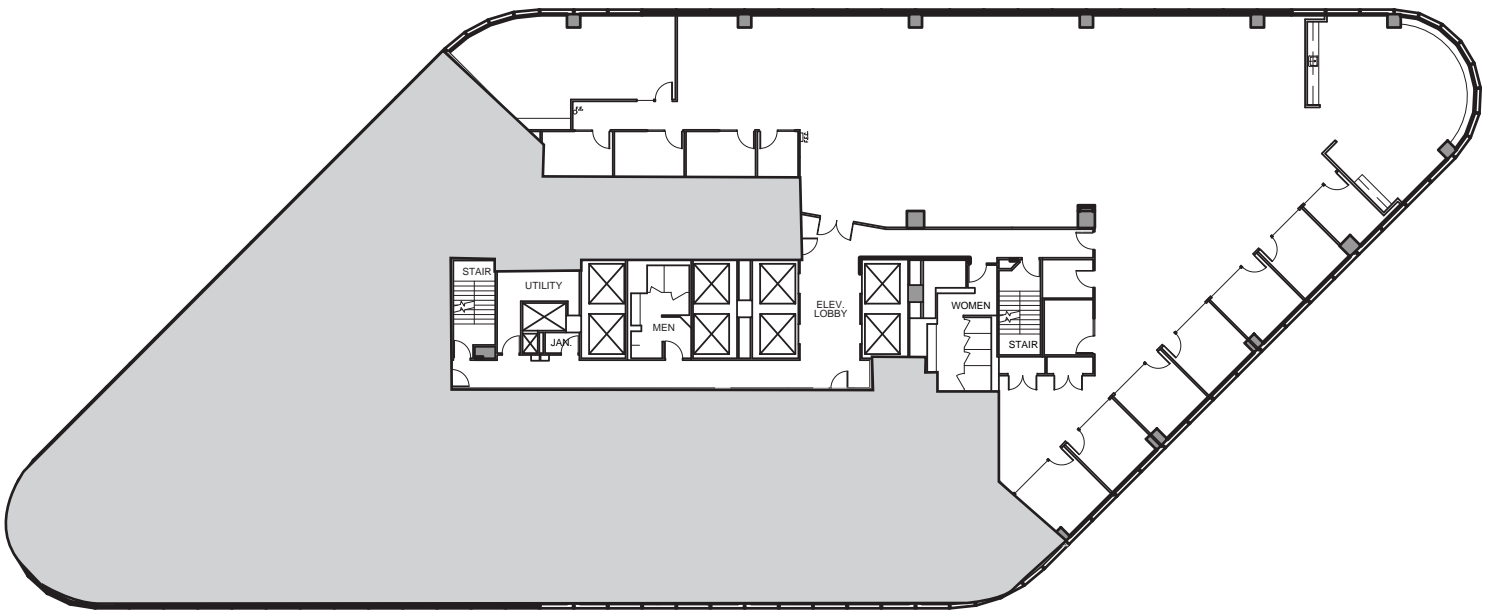


**BACK TO AVAILABLE SPACE**

1100 Olive Way / 1730 Minor Avenue Seattle WA 98101  
[metparkseattle.com](http://metparkseattle.com)

# Suite 1050

- 9,647 RSF
- Efficient space with perimeter private offices, large open area, and kitchen/break area.
- Available 12/1/2026



**BACK TO AVAILABLE SPACE**

1100 Olive Way / 1730 Minor Avenue Seattle WA 98101  
[metparkseattle.com](http://metparkseattle.com)

East Building



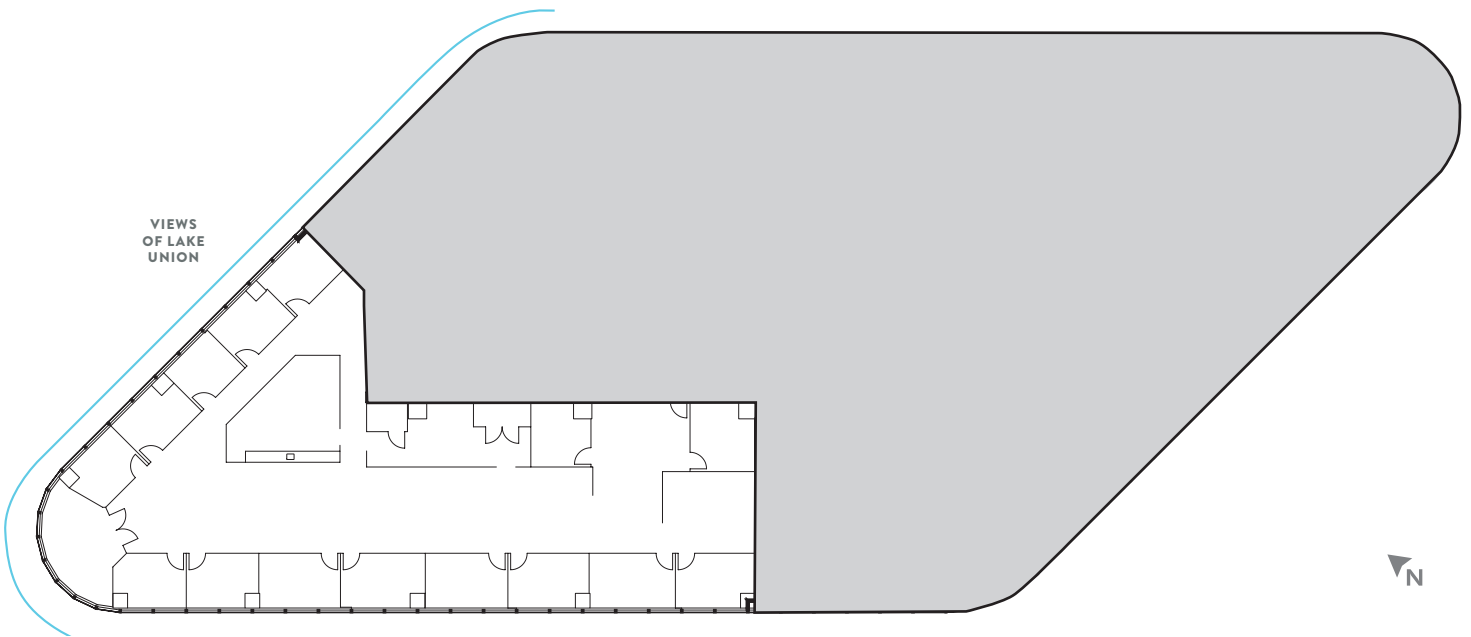
# Suite 1100

- 7,042 RSF
- Available now

 [VIRTUAL TOUR](#)

VIEWS OF CAPITOL HILL

VIEWS  
OF LAKE  
UNION



[BACK TO AVAILABLE SPACE](#)

1100 Olive Way / 1730 Minor Avenue Seattle WA 98101  
[metparkseattle.com](http://metparkseattle.com)

BEACON

**BRODERICK**  
GROUP

Larry Almeleh | 206.910.0859  
[almeleh@broderickgroup.com](mailto:almeleh@broderickgroup.com)

Lauren Hallgrimson | 206.948.4440  
[hallgrimson@broderickgroup.com](mailto:hallgrimson@broderickgroup.com)

East Building



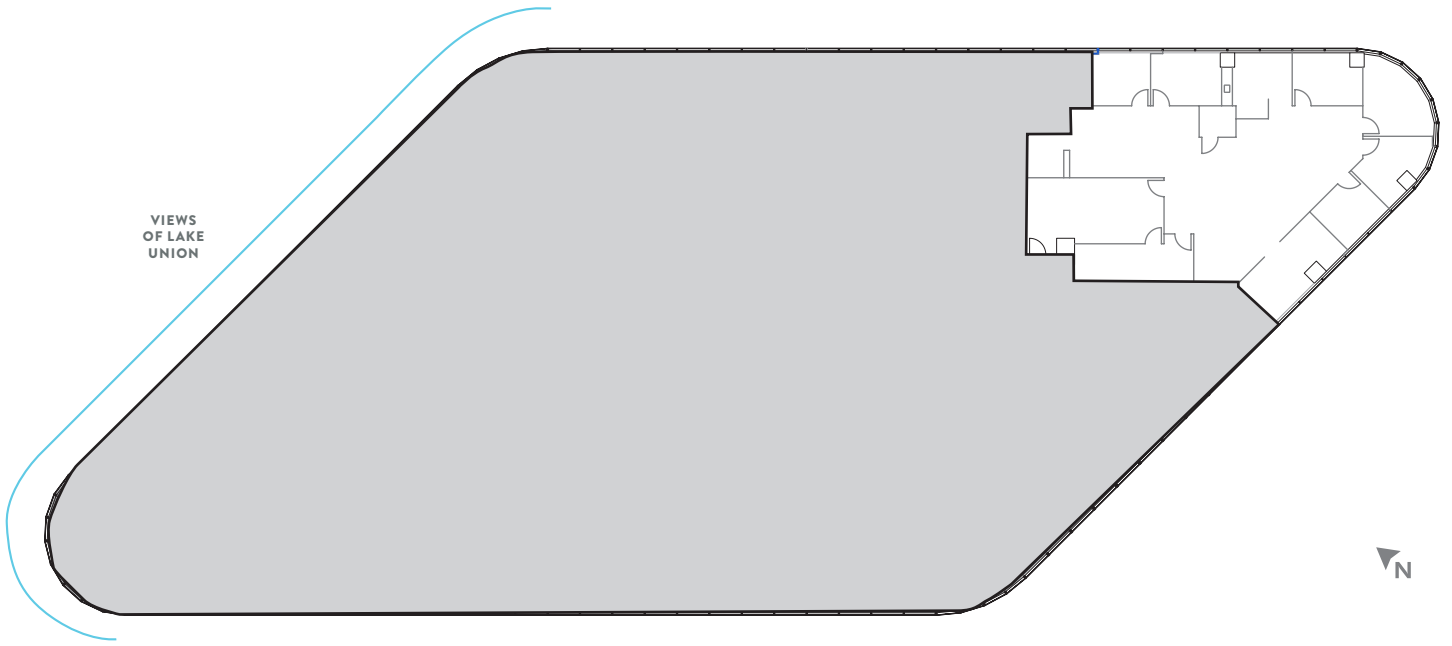
# Suite 1130

- 3,624 RSF
- Available Now

[▶ VIRTUAL TOUR](#)

VIEWS OF CAPITOL HILL

VIEWS OF LAKE UNION



[BACK TO AVAILABLE SPACE](#)

1100 Olive Way / 1730 Minor Avenue Seattle WA 98101  
[metparkseattle.com](http://metparkseattle.com)

BEACON

BRODERICK  
GROUP

Larry Almeleh | 206.910.0859  
[almeleh@broderickgroup.com](mailto:almeleh@broderickgroup.com)

Lauren Hallgrimson | 206.948.4440  
[hallgrimson@broderickgroup.com](mailto:hallgrimson@broderickgroup.com)

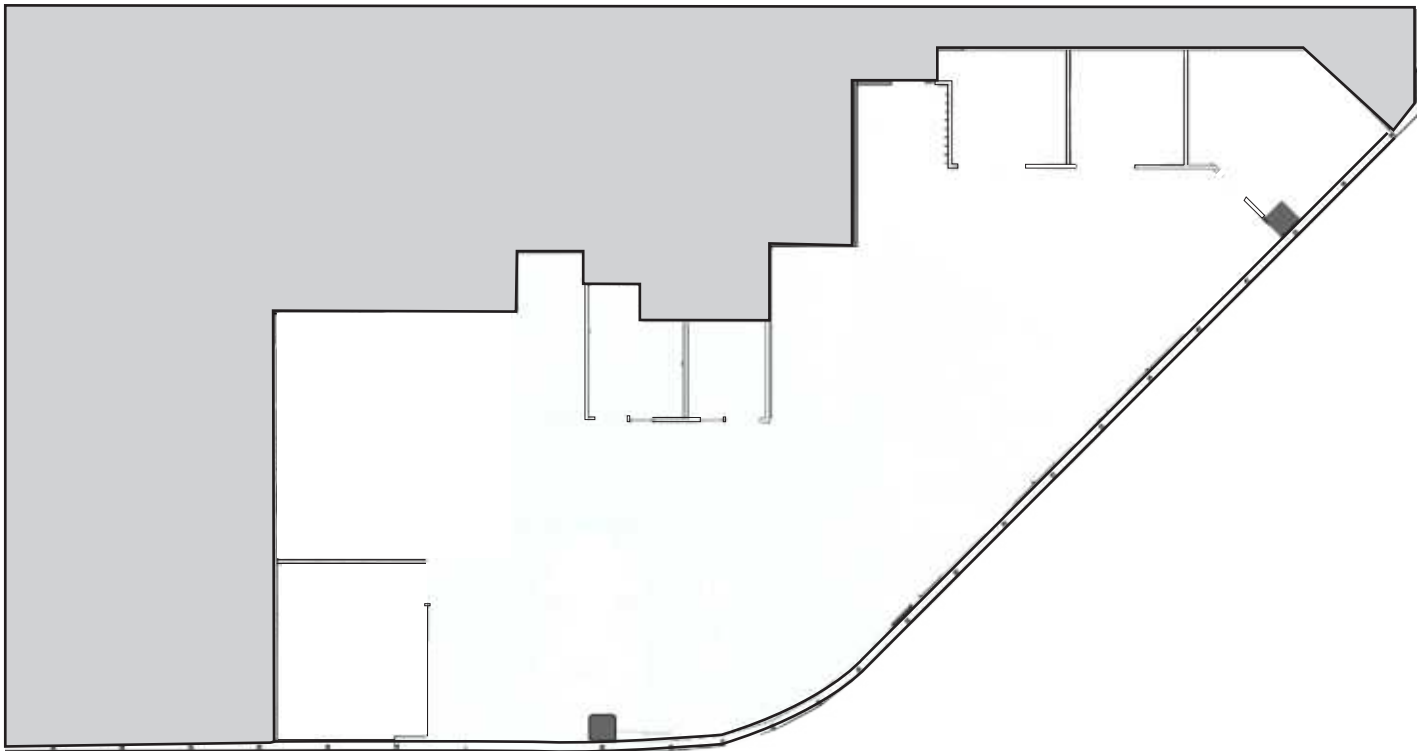
East Building



# Suite 1140

- 4,313 RSF
- Available Now

[▶ VIRTUAL TOUR](#)



**BACK TO AVAILABLE SPACE**

1100 Olive Way / 1730 Minor Avenue Seattle WA 98101  
[metparkseattle.com](http://metparkseattle.com)

BEACON

**BRODERICK**  
GROUP

Larry Almeleh | 206.910.0859  
almeleh@broderickgroup.com

Lauren Hallgrimson | 206.948.4440  
hallgrimson@broderickgroup.com

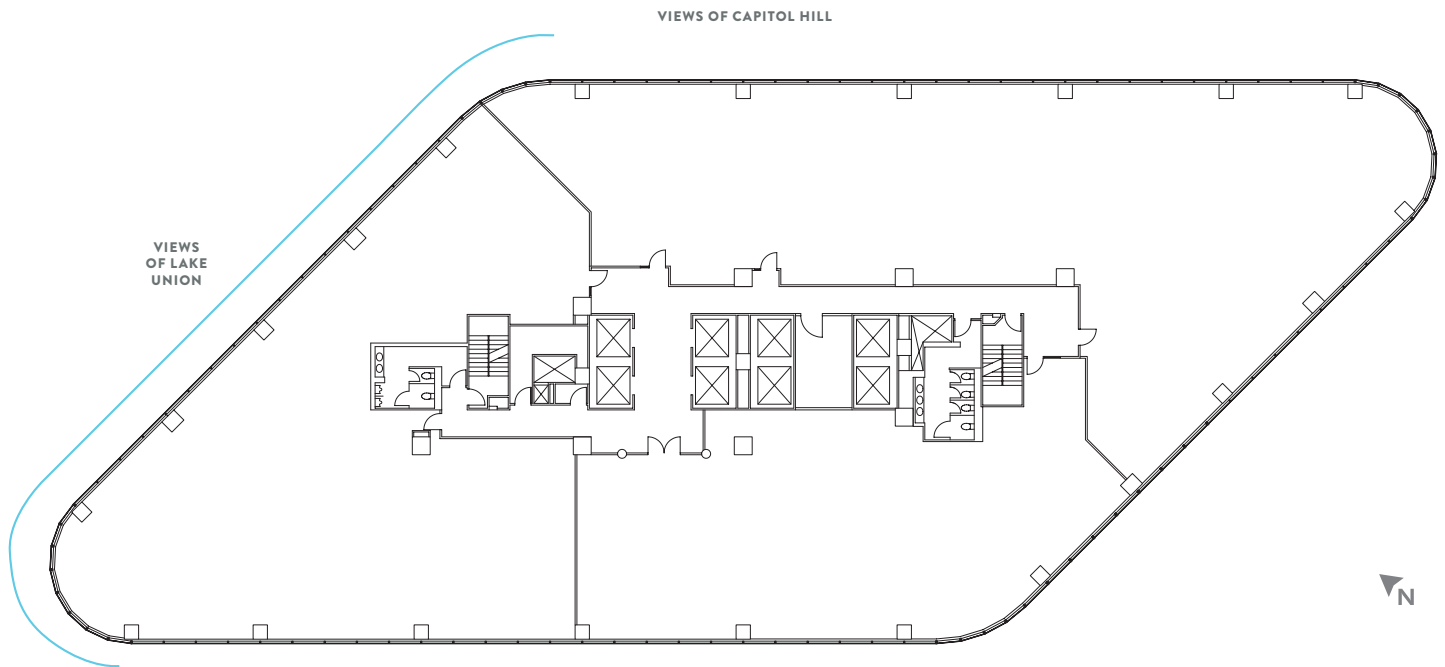
East Building



# Suite 1200

- 21,053 RSF
- Available Now

[▶ VIRTUAL TOUR](#)



[BACK TO AVAILABLE SPACE](#)

1100 Olive Way / 1730 Minor Avenue Seattle WA 98101  
[metparkseattle.com](http://metparkseattle.com)

BEACON

BRODERICK  
GROUP

Larry Almeleh | 206.910.0859  
[almeleh@broderickgroup.com](mailto:almeleh@broderickgroup.com)

Lauren Hallgrimson | 206.948.4440  
[hallgrimson@broderickgroup.com](mailto:hallgrimson@broderickgroup.com)

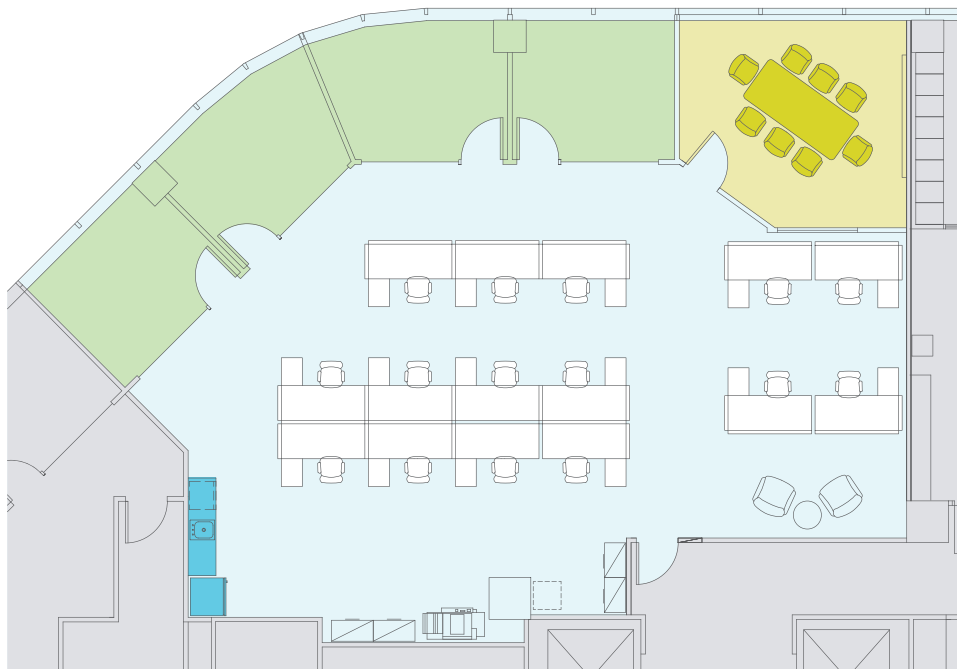
East Building



# Suite 1350

- 2,751 RSF
- Available Now

[▶ VIRTUAL TOUR](#)



[↑ BACK TO AVAILABLE SPACE](#)

1100 Olive Way / 1730 Minor Avenue Seattle WA 98101  
[metparkseattle.com](http://metparkseattle.com)

BEACON

BRODERICK  
GROUP

Larry Almeleh | 206.910.0859  
almeleh@broderickgroup.com

Lauren Hallgrimson | 206.948.4440  
hallgrimson@broderickgroup.com

East Building



# Suite 1500

- 21,615 RSF
- Available Now

[▶ VIRTUAL TOUR](#)



[↑ BACK TO AVAILABLE SPACE](#)

1100 Olive Way / 1730 Minor Avenue Seattle WA 98101  
[metparkseattle.com](http://metparkseattle.com)

BEACON

BRODERICK  
GROUP

Larry Almeleh | 206.910.0859  
[almeleh@broderickgroup.com](mailto:almeleh@broderickgroup.com)

Lauren Hallgrimson | 206.948.4440  
[hallgrimson@broderickgroup.com](mailto:hallgrimson@broderickgroup.com)

East Building



# Suite 1600

- 21,615 RSF
- Available Now

[▶ VIRTUAL TOUR](#)



[↑ BACK TO AVAILABLE SPACE](#)

1100 Olive Way / 1730 Minor Avenue Seattle WA 98101  
[metparkseattle.com](http://metparkseattle.com)

BEACON

BRODERICK  
GROUP

Larry Almeleh | 206.910.0859  
almeleh@broderickgroup.com

Lauren Hallgrimson | 206.948.4440  
hallgrimson@broderickgroup.com

# Suite 1700

- 21,615 RSF
- Available Now

[▶ VIRTUAL TOUR](#)



[↑ BACK TO AVAILABLE SPACE](#)

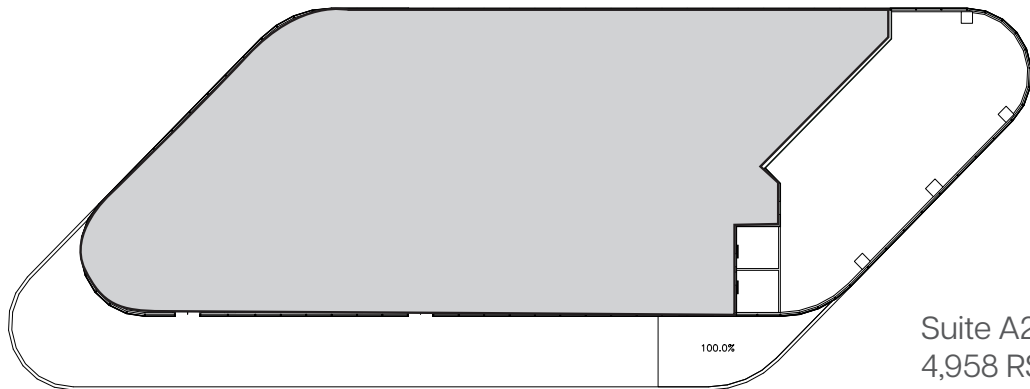
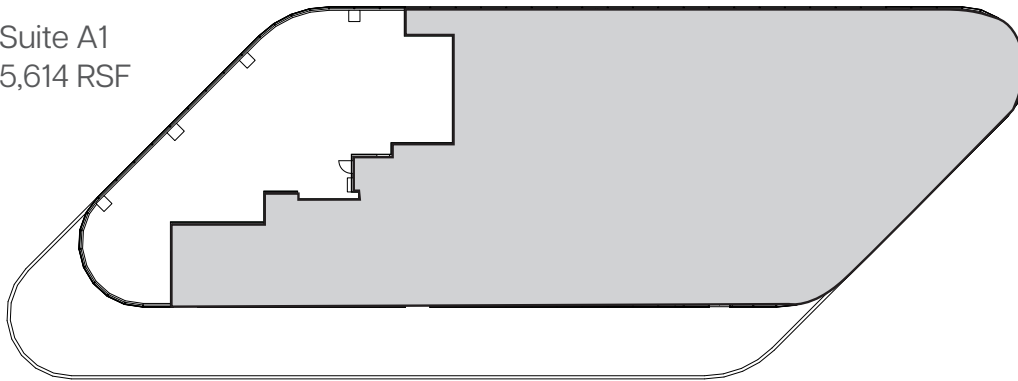
1100 Olive Way / 1730 Minor Avenue Seattle WA 98101  
[metparkseattle.com](http://metparkseattle.com)

# Suite 2000


- 10,572 RSF (A1 - 5,614 RSF, A2 - 4,958 RSF)
- Fully furnished spec suites with private deck
- Available Now

 **VIRTUAL TOUR**

Suite A1  
5,614 RSF



Suite A2  
4,958 RSF

 **BACK TO AVAILABLE SPACE**

1100 Olive Way / 1730 Minor Avenue Seattle WA 98101  
[metparkseattle.com](http://metparkseattle.com)

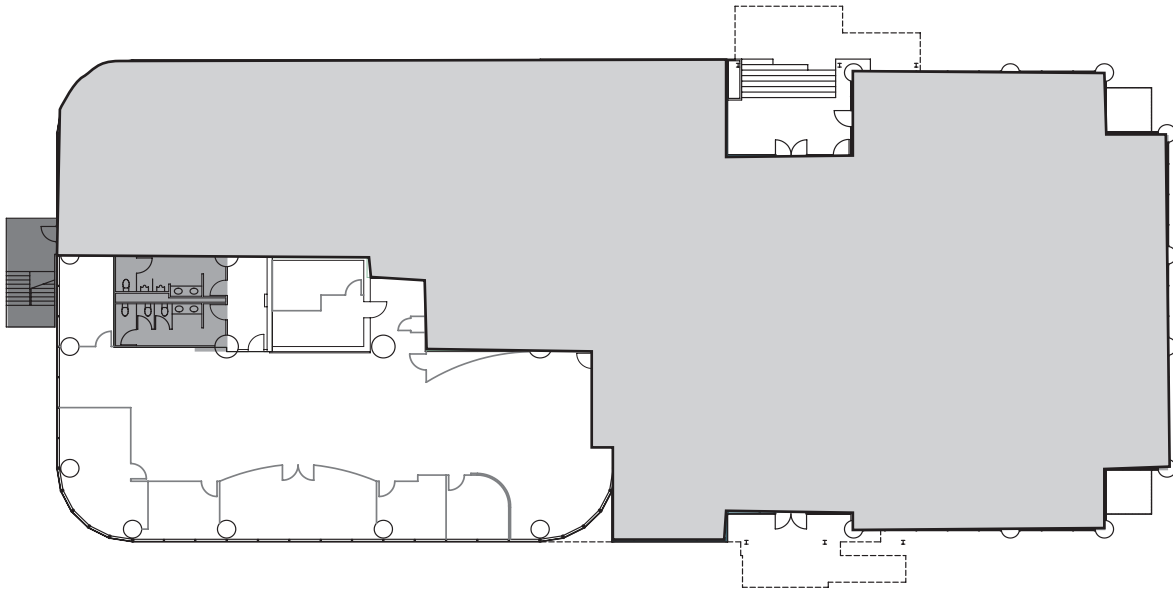
West Building



# Suite 102

- 5,372 RSF
- Available Now

[▶ VIRTUAL TOUR](#)



[BACK TO AVAILABLE SPACE](#)

1100 Olive Way / 1730 Minor Avenue Seattle WA 98101  
[metparkseattle.com](http://metparkseattle.com)

BEACON

BRODERICK  
GROUP

Larry Almeleh | 206.910.0859  
[almeleh@broderickgroup.com](mailto:almeleh@broderickgroup.com)

Lauren Hallgrimson | 206.948.4440  
[hallgrimson@broderickgroup.com](mailto:hallgrimson@broderickgroup.com)

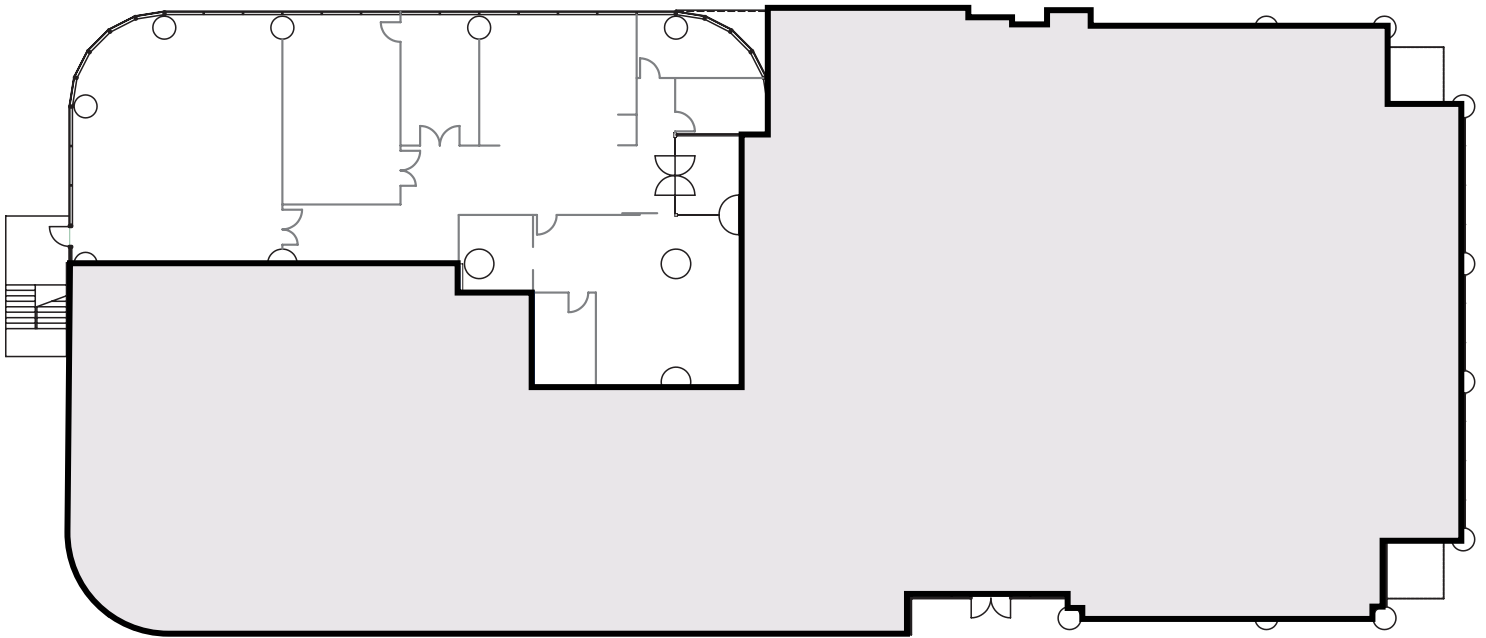
West Building



# Suite 150

- 5,573 RSF
- Available Now

[▶ VIRTUAL TOUR](#)



[BACK TO AVAILABLE SPACE](#)

1100 Olive Way / 1730 Minor Avenue Seattle WA 98101  
[metparkseattle.com](http://metparkseattle.com)

BEACON

BRODERICK  
GROUP

Larry Almeleh | 206.910.0859  
[almeleh@broderickgroup.com](mailto:almeleh@broderickgroup.com)

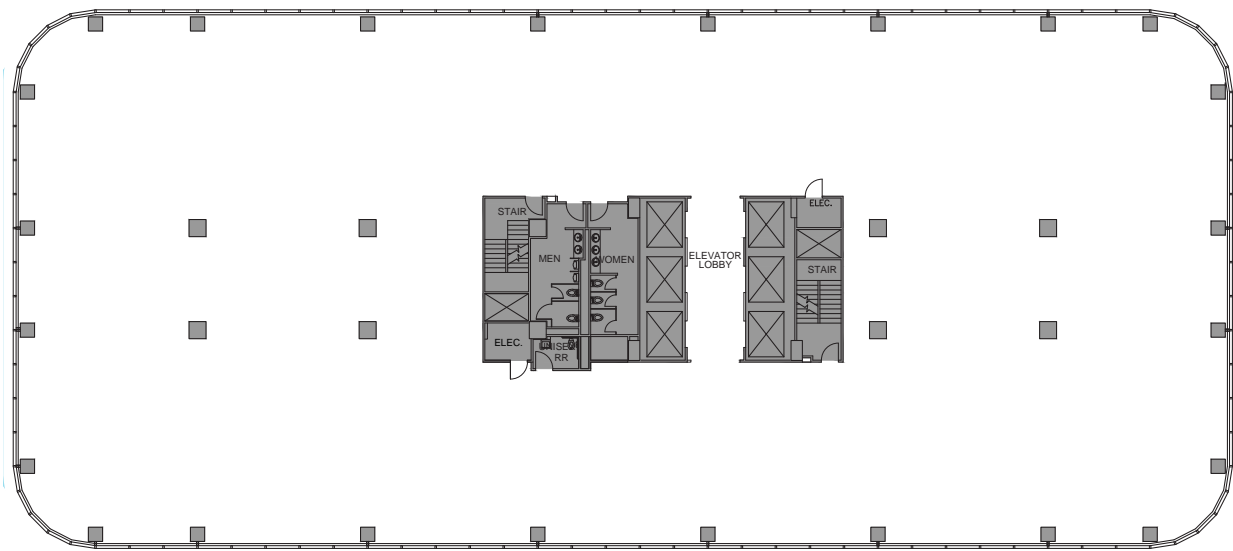
Lauren Hallgrimson | 206.948.4440  
[hallgrimson@broderickgroup.com](mailto:hallgrimson@broderickgroup.com)

# Suite 400

- 21,214 RSF
- Available Now

 **VIRTUAL TOUR**

VIEWS OF CAPITOL HILL



**BACK TO AVAILABLE SPACE**

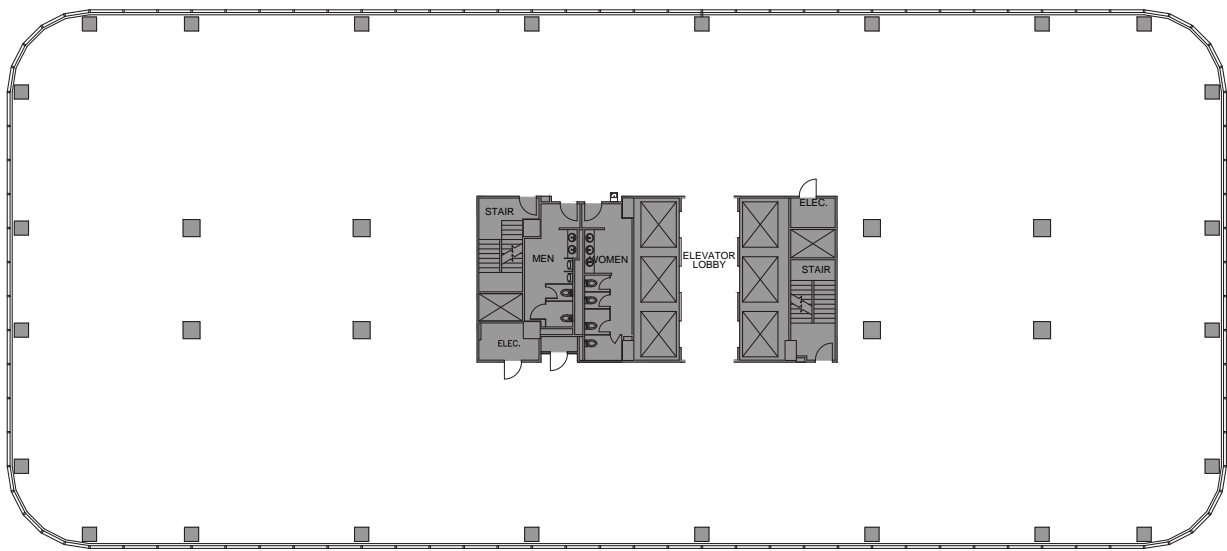
1100 Olive Way / 1730 Minor Avenue Seattle WA 98101  
[metparkseattle.com](http://metparkseattle.com)


# Suite 500

- 21,217 RSF
- Available Now

 **VIRTUAL TOUR**

VIEWS OF CAPITOL HILL



 **BACK TO AVAILABLE SPACE**

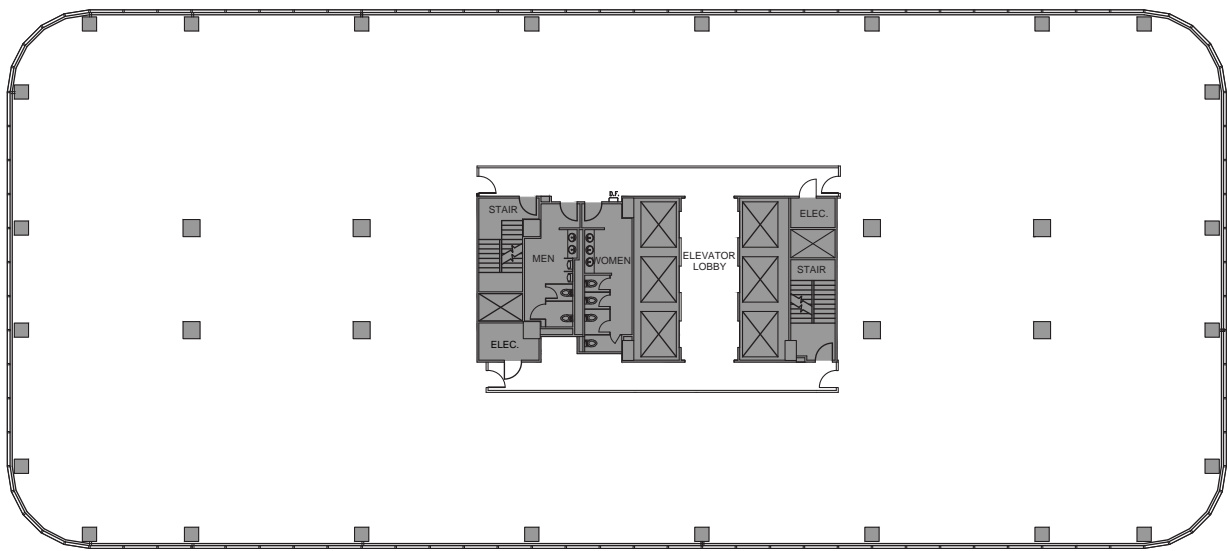
1100 Olive Way / 1730 Minor Avenue Seattle WA 98101  
[metparkseattle.com](http://metparkseattle.com)

# Suite 600

- 21,190 RSF
- Available Now

 **VIRTUAL TOUR**

VIEWS OF CAPITOL HILL



**BACK TO AVAILABLE SPACE**

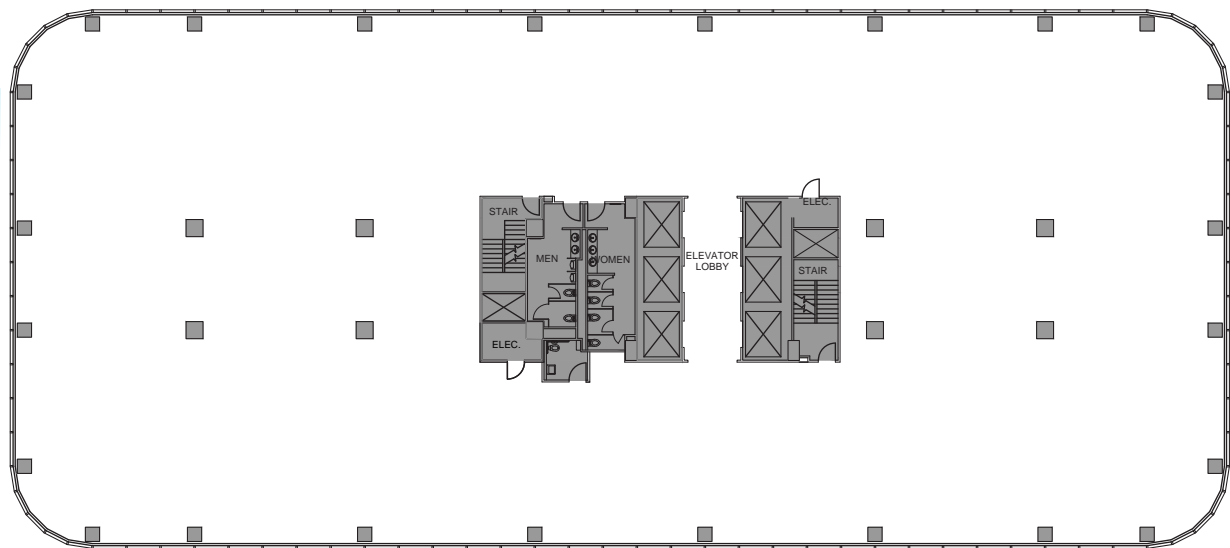
1100 Olive Way / 1730 Minor Avenue Seattle WA 98101  
[metparkseattle.com](http://metparkseattle.com)

# Suite 700

- 21,211 RSF
- Available Now

 **VIRTUAL TOUR**

VIEWS OF CAPITOL HILL



**BACK TO AVAILABLE SPACE**

1100 Olive Way / 1730 Minor Avenue Seattle WA 98101  
[metparkseattle.com](http://metparkseattle.com)

West Building

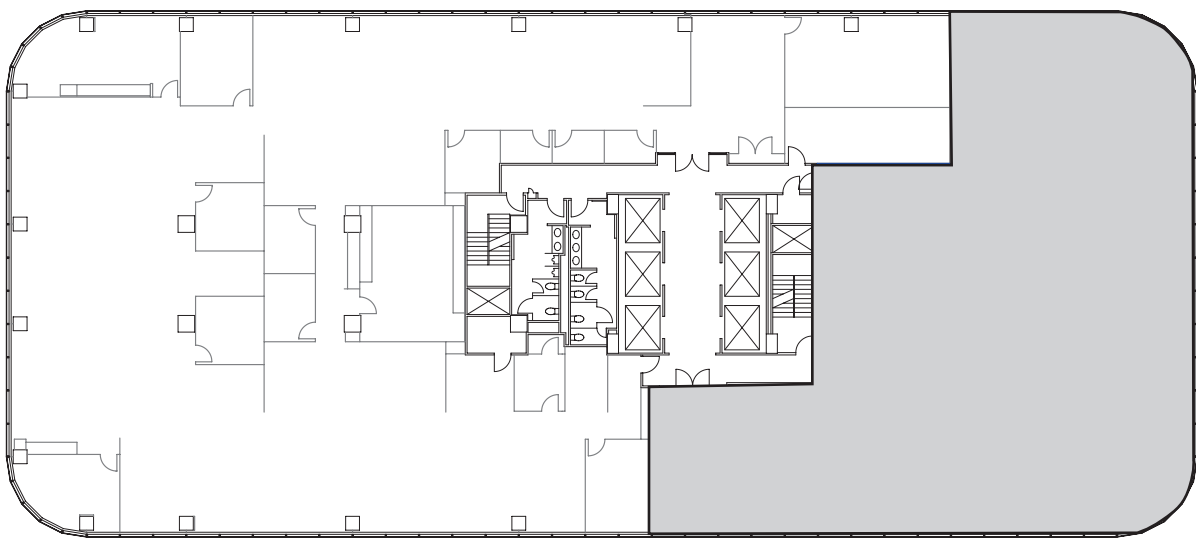


# Suite 800

- 13,446 RSF
- Available Now

[▶ VIRTUAL TOUR](#)

VIEWS OF CAPITOL HILL



[BACK TO AVAILABLE SPACE](#)

1100 Olive Way / 1730 Minor Avenue Seattle WA 98101  
[metparkseattle.com](http://metparkseattle.com)

BEACON

BRODERICK  
GROUP

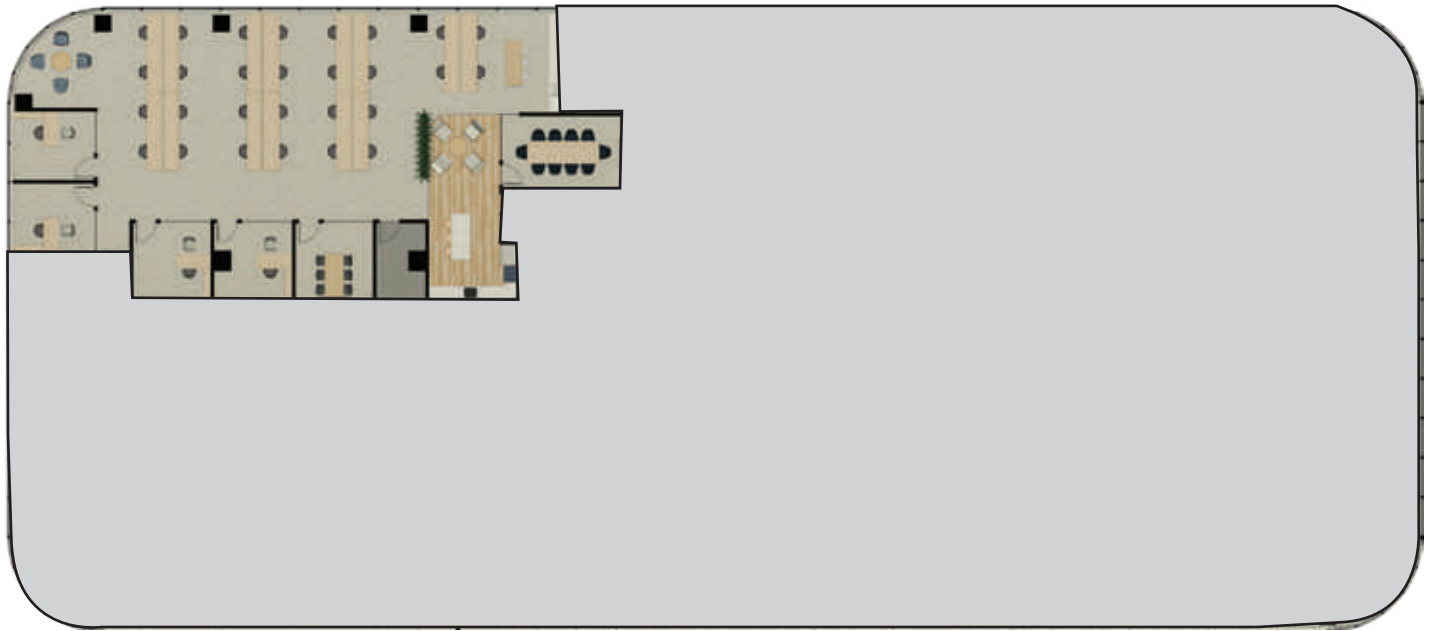
Larry Almeleh | 206.910.0859  
[almeleh@broderickgroup.com](mailto:almeleh@broderickgroup.com)

Lauren Hallgrimson | 206.948.4440  
[hallgrimson@broderickgroup.com](mailto:hallgrimson@broderickgroup.com)

# Suite 910 - Beacon Ready

- 5,615 RSF
- Move-in ready spec suite with furniture and access to exclusive shared amenities on the floor
- Available Now
- [Beacon Ready Marketing Flyer](#)

 [VIRTUAL TOUR](#)

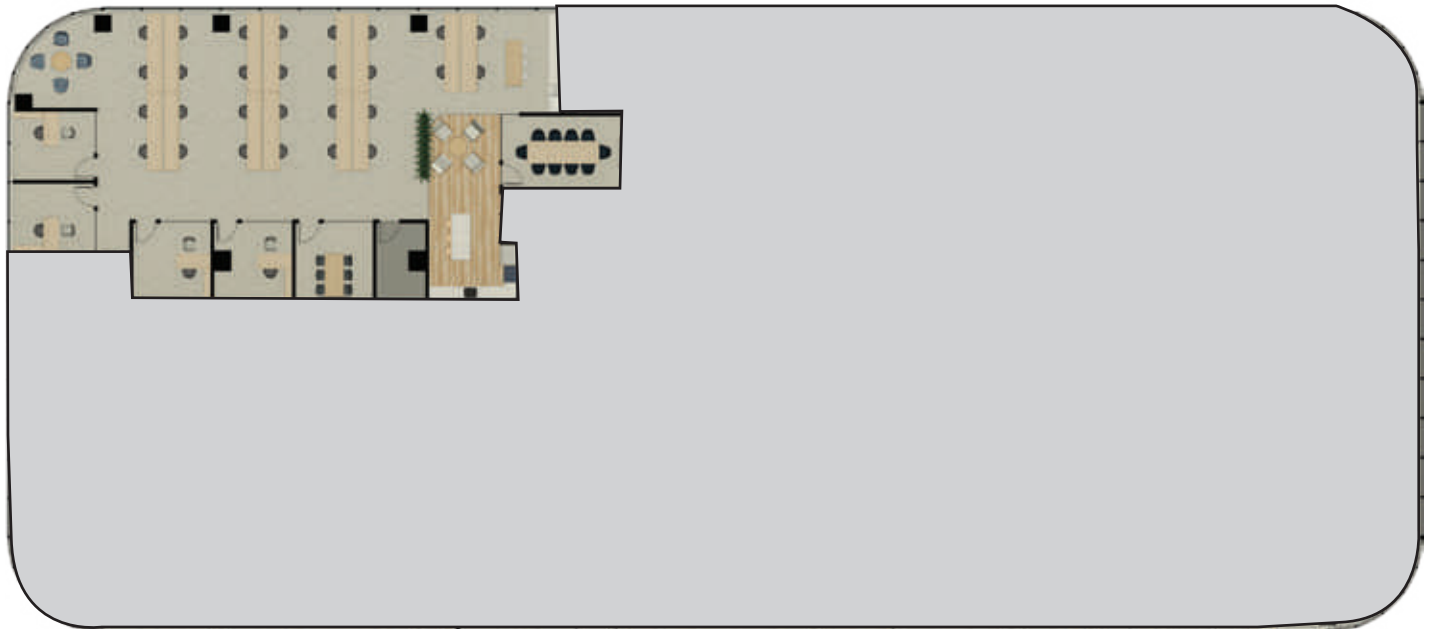


[BACK TO AVAILABLE SPACE](#)

1100 Olive Way / 1730 Minor Avenue Seattle WA 98101  
[metparkseattle.com](http://metparkseattle.com)

# Suite 930 - Beacon Ready

- 2,946 RSF
- Move-in ready spec suite with furniture and access to exclusive shared amenities on the floor
- Available Now
- [Beacon Ready Marketing Flyer](#)



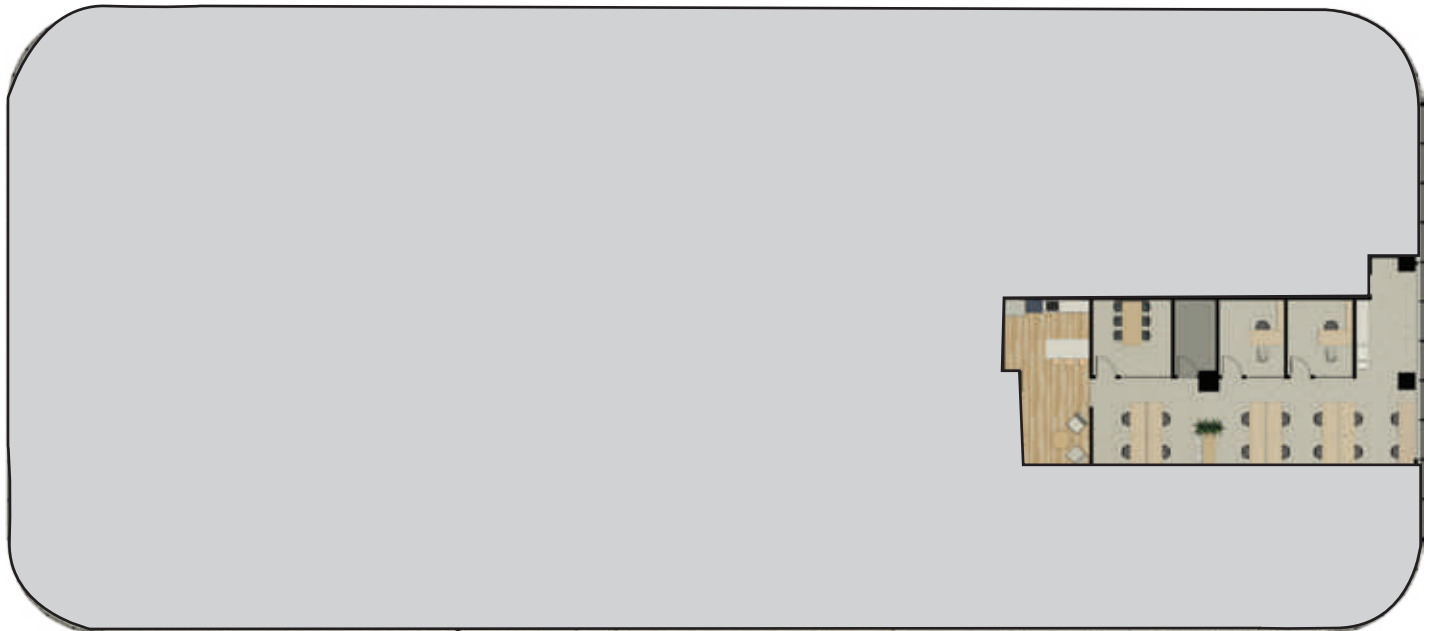
**BACK TO AVAILABLE SPACE**

1100 Olive Way / 1730 Minor Avenue Seattle WA 98101  
[metparkseattle.com](http://metparkseattle.com)

# Suite 940 - Beacon Ready

- 2,748 RSF
- Move-in ready spec suite with furniture and access to exclusive shared amenities on the floor
- Available Now
- [Beacon Ready Marketing Flyer](#)

 [VIRTUAL TOUR](#)



[BACK TO AVAILABLE SPACE](#)

1100 Olive Way / 1730 Minor Avenue Seattle WA 98101  
[metparkseattle.com](http://metparkseattle.com)

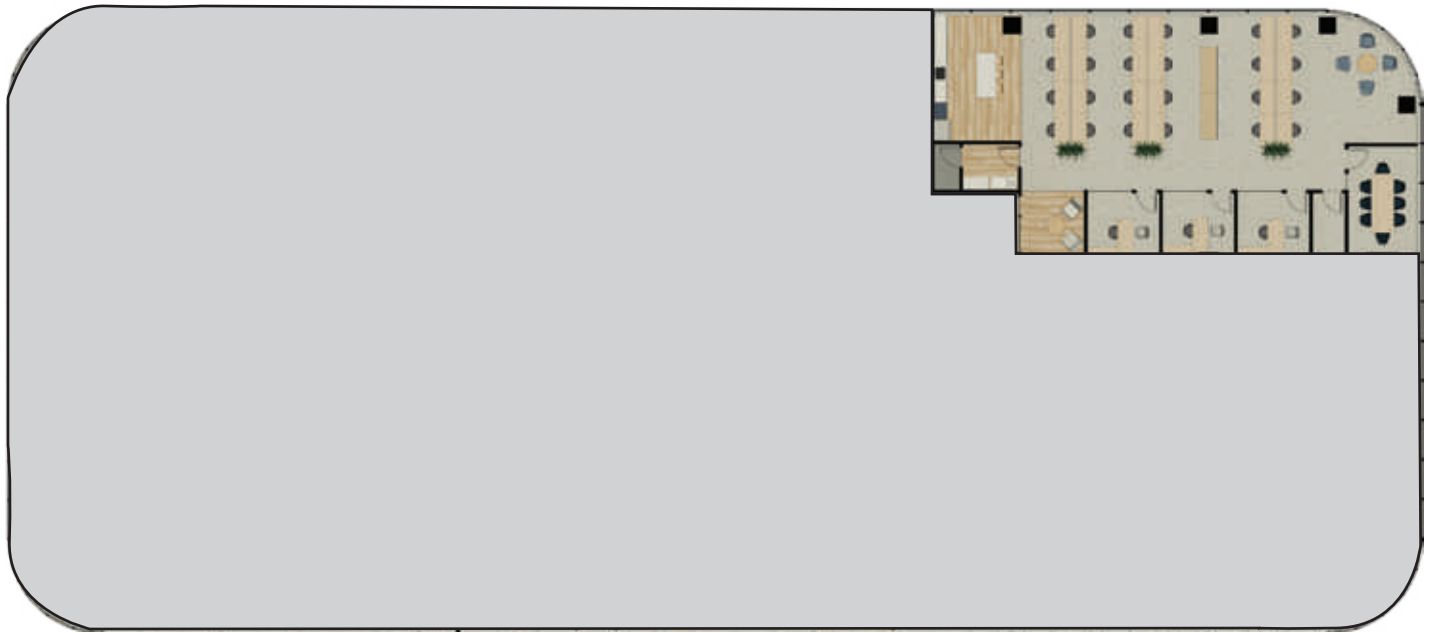
West Building



# Suite 950 - Beacon Ready

- 4,123 RSF
- Available Now
- [Beacon Ready Marketing Flyer](#)

[▶ VIRTUAL TOUR](#)



[↑ BACK TO AVAILABLE SPACE](#)

1100 Olive Way / 1730 Minor Avenue Seattle WA 98101  
[metparkseattle.com](http://metparkseattle.com)

BEACON

BRODERICK  
GROUP

Larry Almeleh | 206.910.0859  
[almeleh@broderickgroup.com](mailto:almeleh@broderickgroup.com)

Lauren Hallgrimson | 206.948.4440  
[hallgrimson@broderickgroup.com](mailto:hallgrimson@broderickgroup.com)

West Building

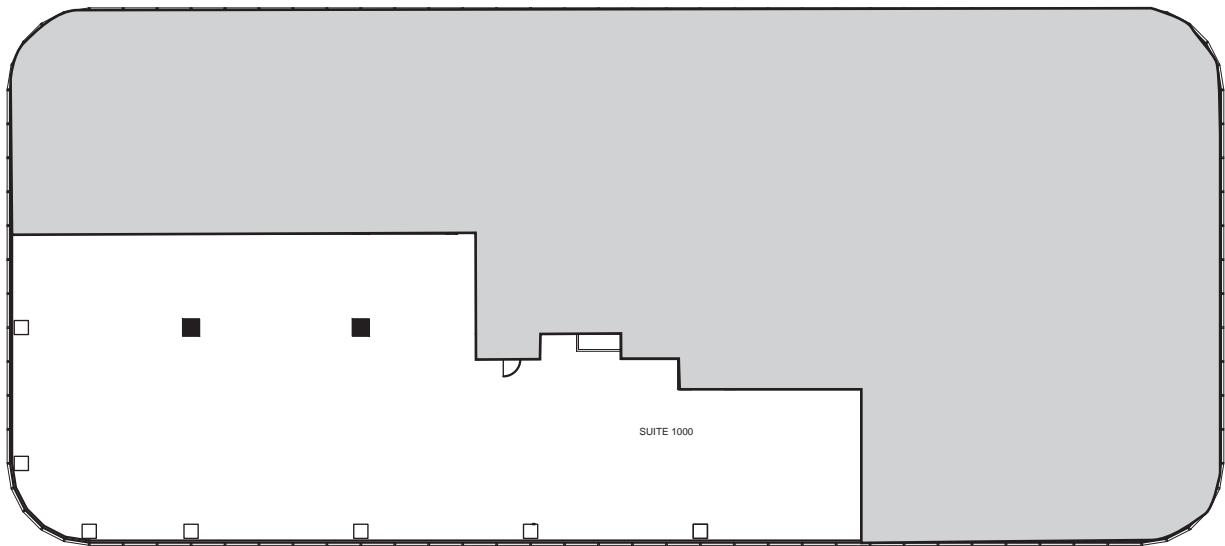


# Suite 1000

- 7,877 RSF
- Available Now

[▶ VIRTUAL TOUR](#)

VIEWS OF CAPITOL HILL



[↑ BACK TO AVAILABLE SPACE](#)

1100 Olive Way / 1730 Minor Avenue Seattle WA 98101  
[metparkseattle.com](http://metparkseattle.com)

BEACON

BRODERICK  
GROUP

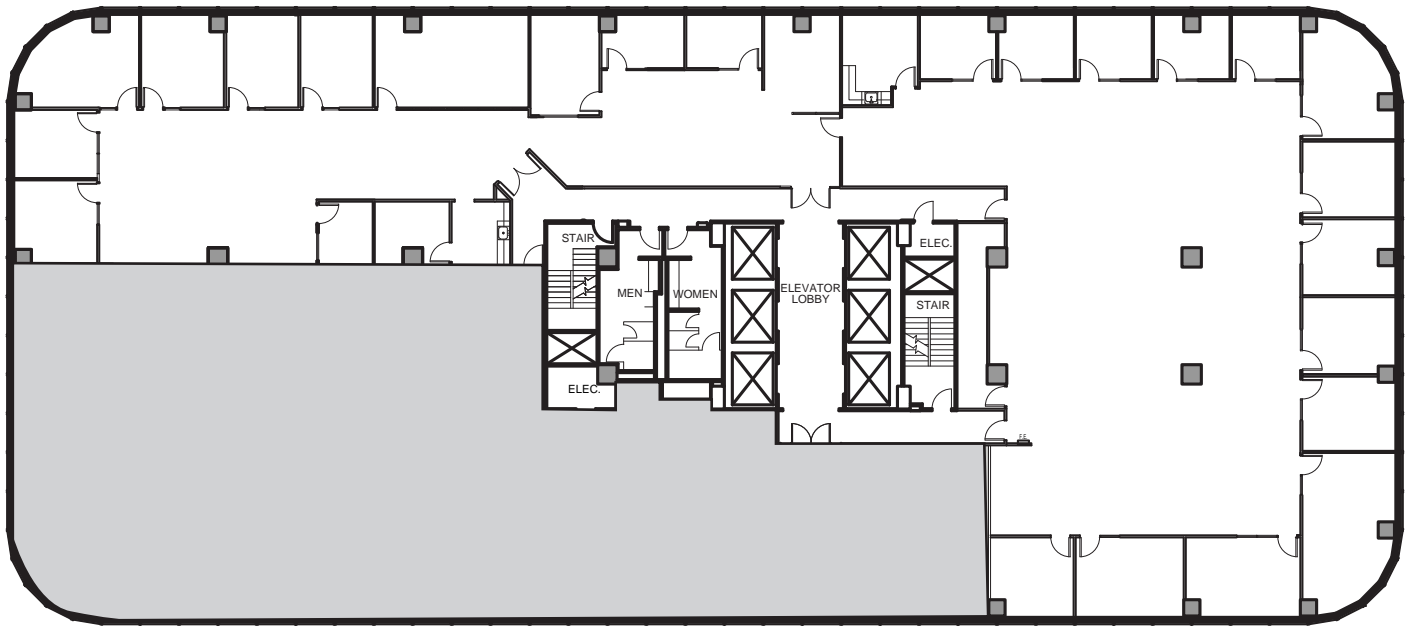
Larry Almeleh | 206.910.0859  
almeleh@broderickgroup.com

Lauren Hallgrimson | 206.948.4440  
hallgrimson@broderickgroup.com

# Suite 1030

- 13,334 RSF
- Available Now

 **VIRTUAL TOUR**



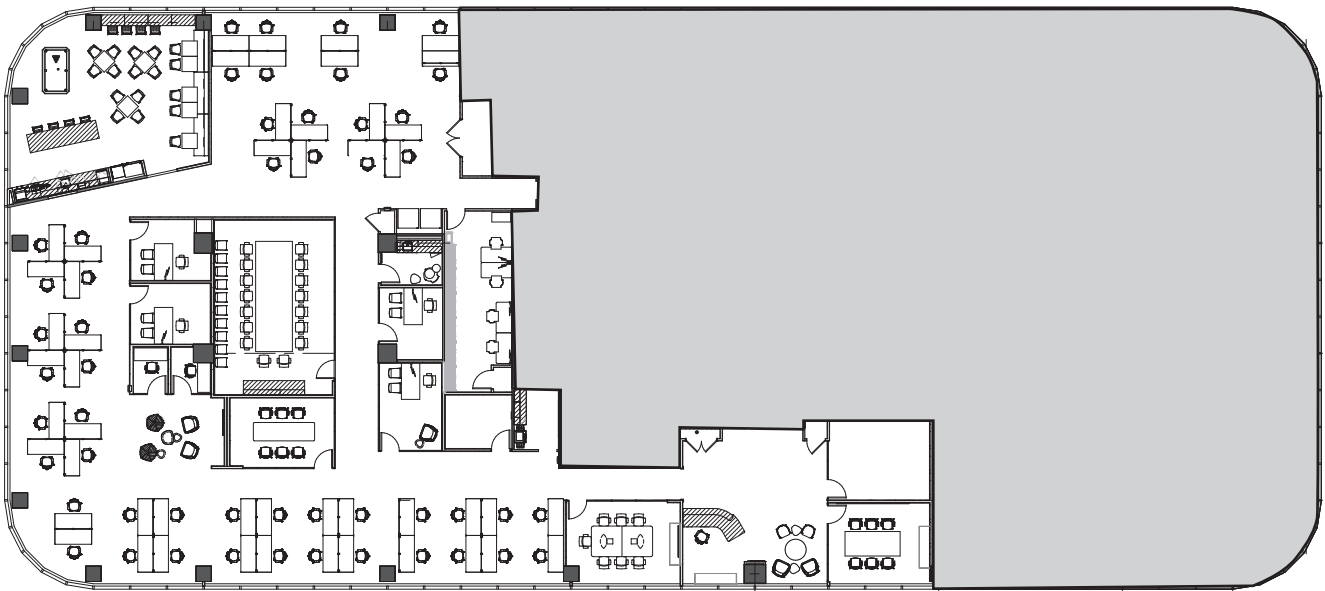
**BACK TO AVAILABLE SPACE**

1100 Olive Way / 1730 Minor Avenue Seattle WA 98101  
[metparkseattle.com](http://metparkseattle.com)

# Suite 1100

- 11,078 RSF
- Move-in ready with furniture
- Available Now

 **VIRTUAL TOUR**



**BACK TO AVAILABLE SPACE**

1100 Olive Way / 1730 Minor Avenue Seattle WA 98101  
[metparkseattle.com](http://metparkseattle.com)

West Building



# Suite 1150

- 9,569 RSF
- Move-in ready spec suite
- Available Now

[▶ VIRTUAL TOUR](#)

VIEWS OF CAPITOL HILL



[BACK TO AVAILABLE SPACE](#)

1100 Olive Way / 1730 Minor Avenue Seattle WA 98101  
[metparkseattle.com](http://metparkseattle.com)

BEACON

BRODERICK  
GROUP

Larry Almeleh | 206.910.0859  
[almeleh@broderickgroup.com](mailto:almeleh@broderickgroup.com)

Lauren Hallgrimson | 206.948.4440  
[hallgrimson@broderickgroup.com](mailto:hallgrimson@broderickgroup.com)

West Building

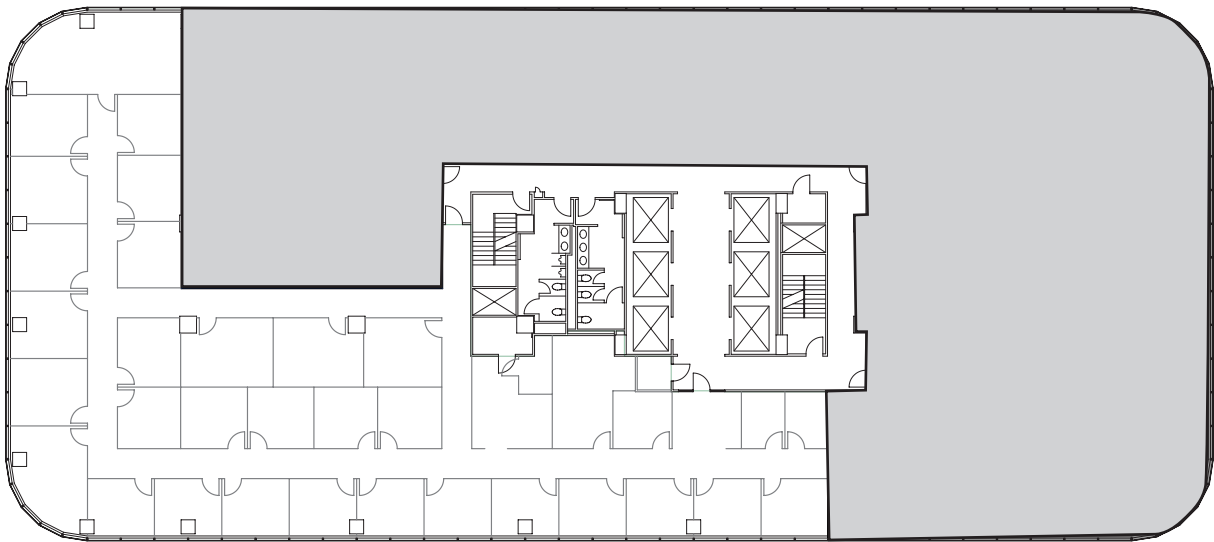


# Suite 1200

- 8,579 RSF
- Available Now

[▶ VIRTUAL TOUR](#)

VIEWS OF CAPITOL HILL



[BACK TO AVAILABLE SPACE](#)

1100 Olive Way / 1730 Minor Avenue Seattle WA 98101  
[metparkseattle.com](http://metparkseattle.com)

BEACON

BRODERICK  
GROUP

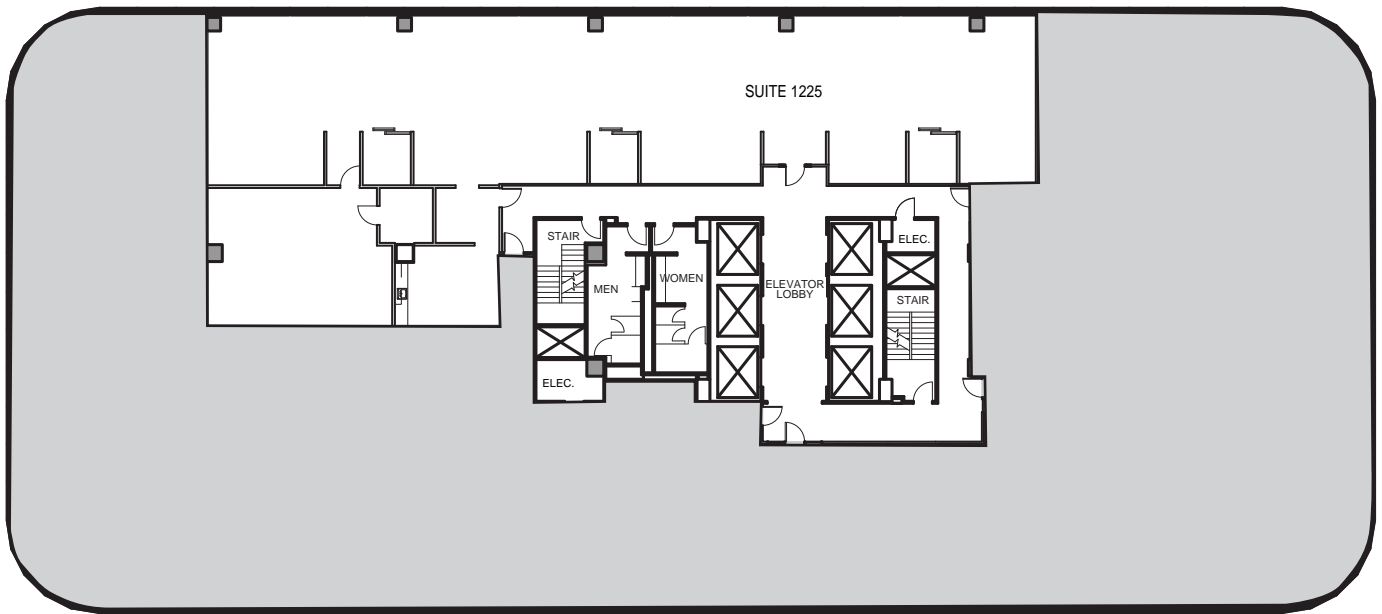
Larry Almeleh | 206.910.0859  
[almeleh@broderickgroup.com](mailto:almeleh@broderickgroup.com)


Lauren Hallgrimson | 206.948.4440  
[hallgrimson@broderickgroup.com](mailto:hallgrimson@broderickgroup.com)

# Suite 1225

- 5,488 RSF
- Available Now

 **VIRTUAL TOUR**



 **BACK TO AVAILABLE SPACE**

1100 Olive Way / 1730 Minor Avenue Seattle WA 98101  
[metparkseattle.com](http://metparkseattle.com)

West Building

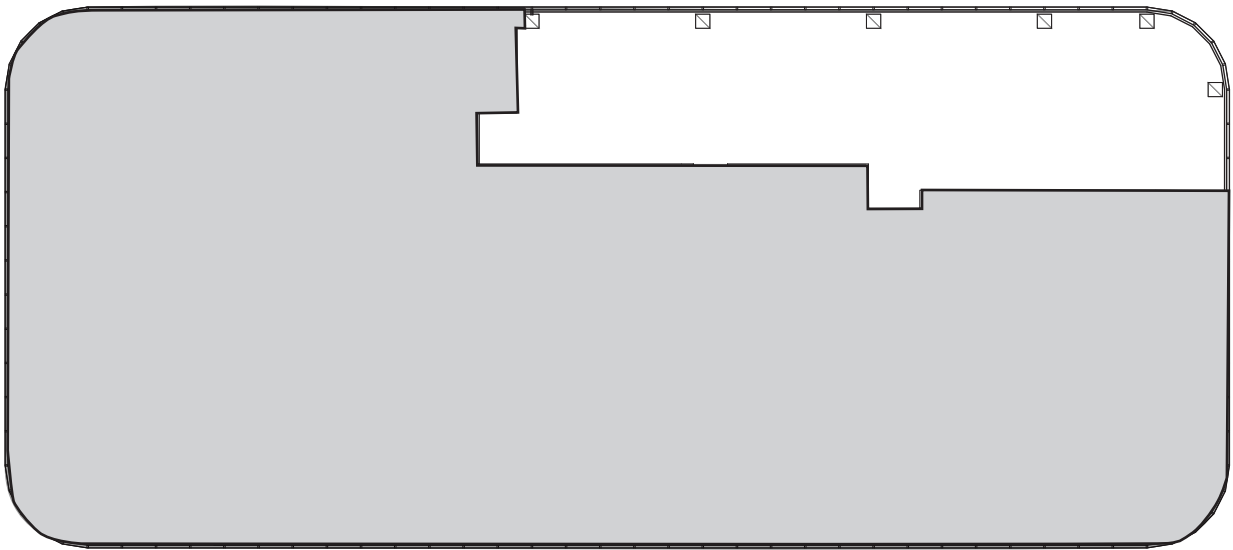


# Suite 1550

- 4,435 RSF
- Available Now

[▶ VIRTUAL TOUR](#)

VIEWS OF CAPITOL HILL



[↑ BACK TO AVAILABLE SPACE](#)

1100 Olive Way / 1730 Minor Avenue Seattle WA 98101  
[metparkseattle.com](http://metparkseattle.com)

BEACON

BRODERICK  
GROUP

Larry Almeleh | 206.910.0859  
[almeleh@broderickgroup.com](mailto:almeleh@broderickgroup.com)

Lauren Hallgrimson | 206.948.4440  
[hallgrimson@broderickgroup.com](mailto:hallgrimson@broderickgroup.com)

West Building

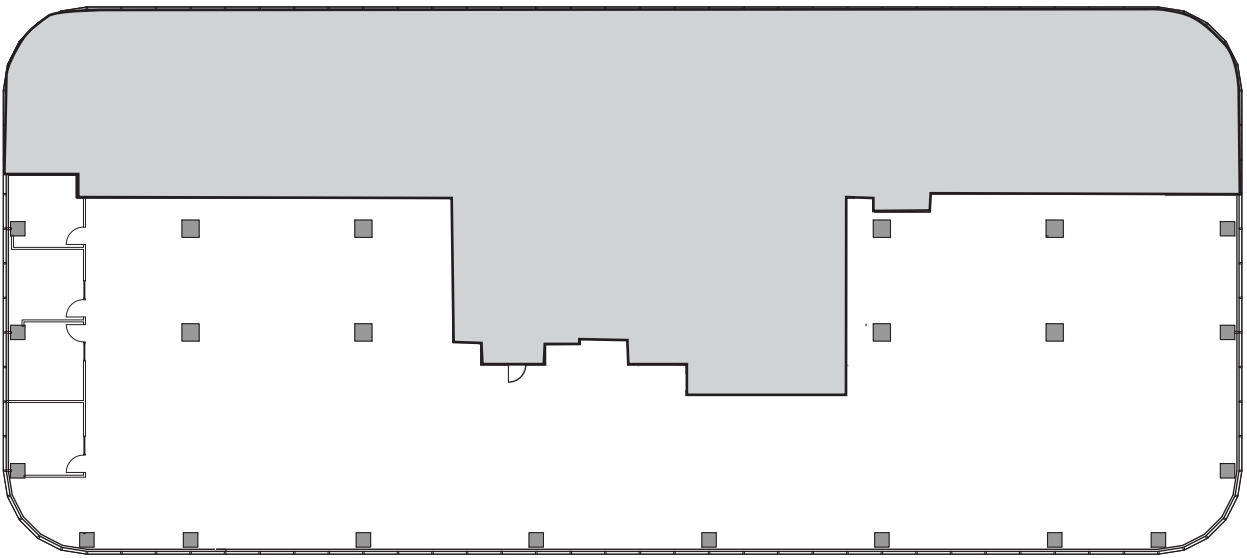


# Suite 1580

- 13,505 RSF
- Available Now

[▶ VIRTUAL TOUR](#)

VIEWS OF CAPITOL HILL



[BACK TO AVAILABLE SPACE](#)

1100 Olive Way / 1730 Minor Avenue Seattle WA 98101  
[metparkseattle.com](http://metparkseattle.com)

BEACON

BRODERICK  
GROUP

Larry Almeleh | 206.910.0859  
[almeleh@broderickgroup.com](mailto:almeleh@broderickgroup.com)

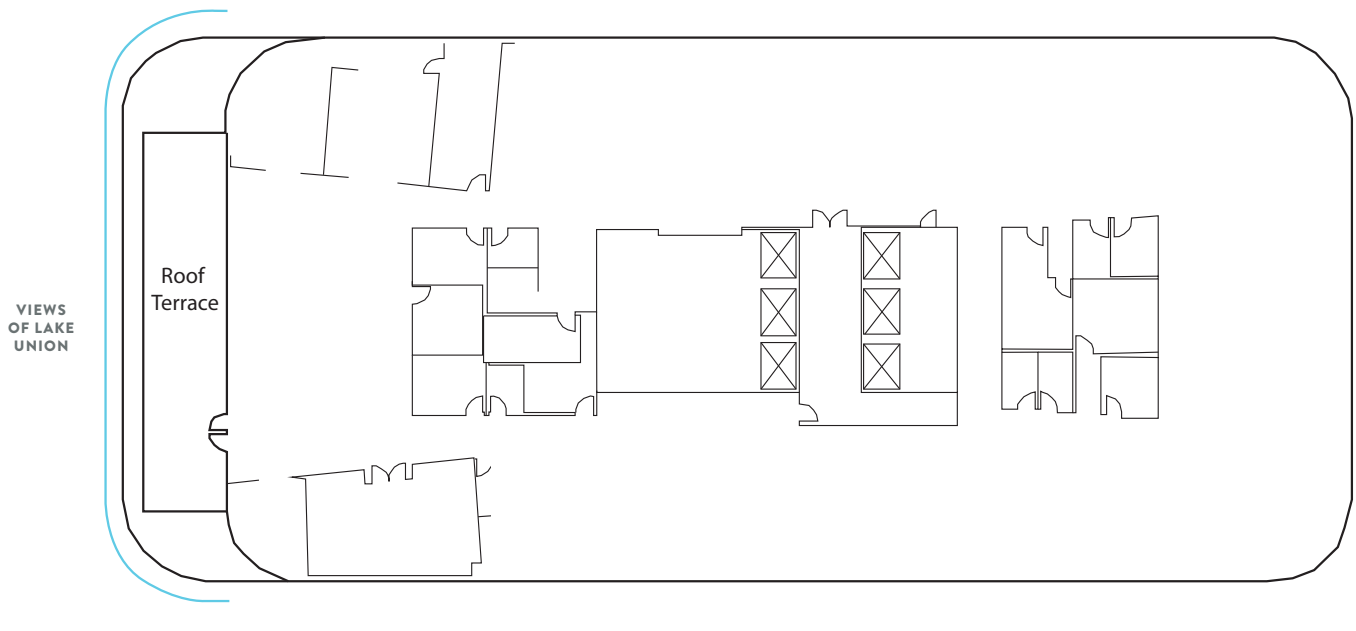
Lauren Hallgrimson | 206.948.4440  
[hallgrimson@broderickgroup.com](mailto:hallgrimson@broderickgroup.com)

# Suite 1600

- 20,965 RSF
- Available Now

 **VIRTUAL TOUR**

VIEWS OF CAPITOL HILL



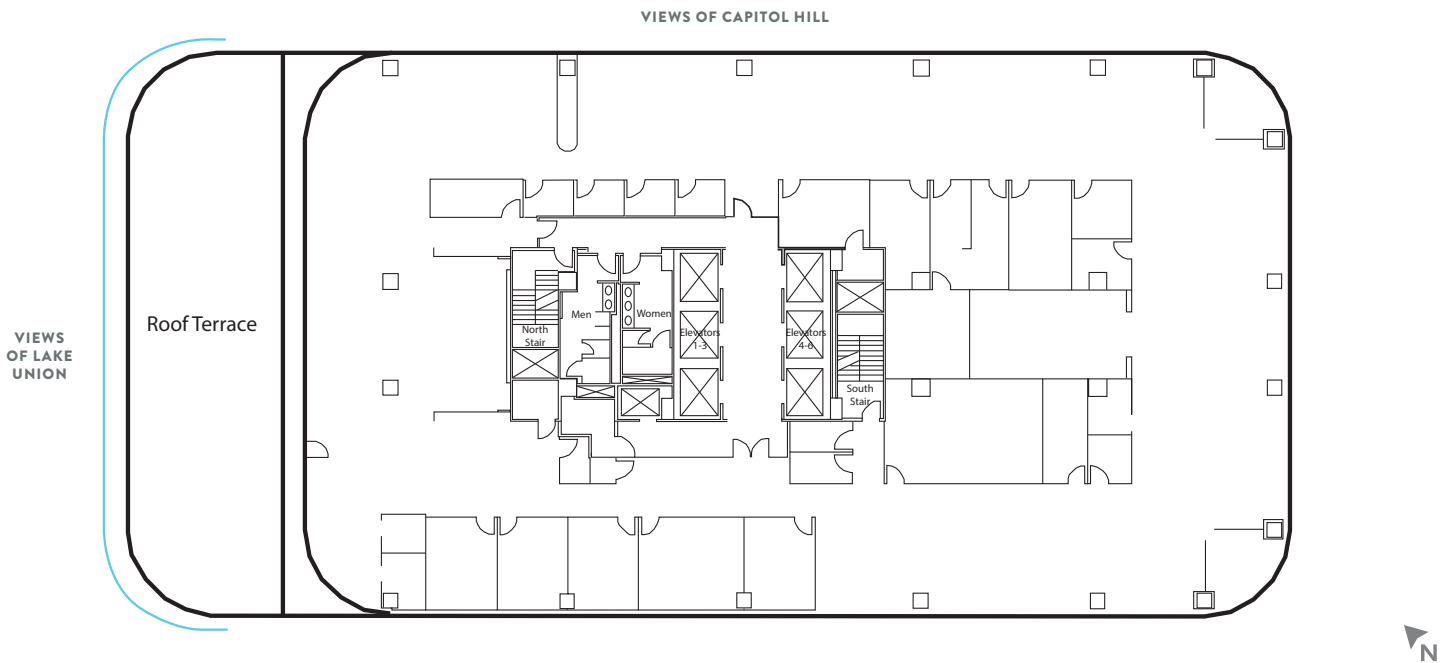
**BACK TO AVAILABLE SPACE**

1100 Olive Way / 1730 Minor Avenue Seattle WA 98101  
[metparkseattle.com](http://metparkseattle.com)

# Suite 1700

- 16,474 RSF
- Move-in ready spec suite with furniture and private deck
- Available Now

 **VIRTUAL TOUR**



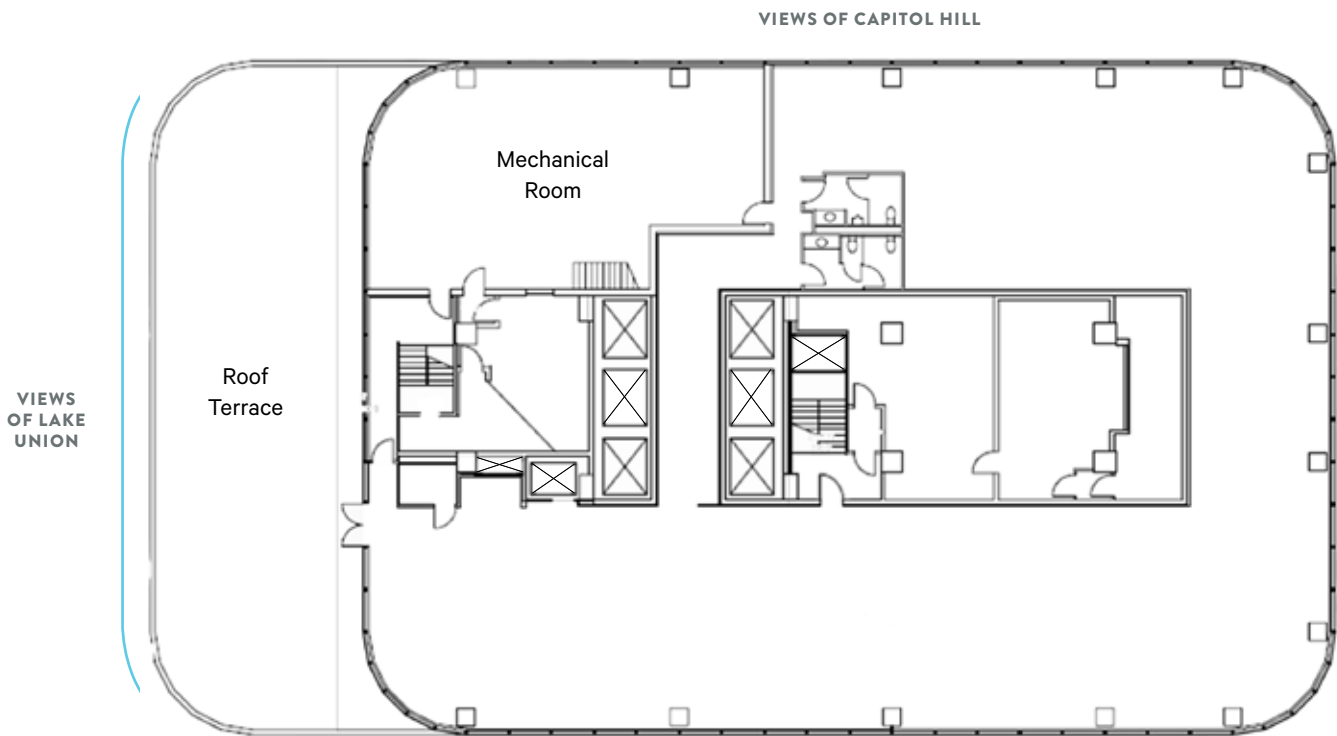
**BACK TO AVAILABLE SPACE**

1100 Olive Way / 1730 Minor Avenue Seattle WA 98101  
[metparkseattle.com](http://metparkseattle.com)

# Suite 1800

- 9,295 RSF
- Private deck
- Available Now

 **VIRTUAL TOUR**



**BACK TO AVAILABLE SPACE**

1100 Olive Way / 1730 Minor Avenue Seattle WA 98101  
[metparkseattle.com](http://metparkseattle.com)