

WESTGATE TERRACE OFFICE PARK

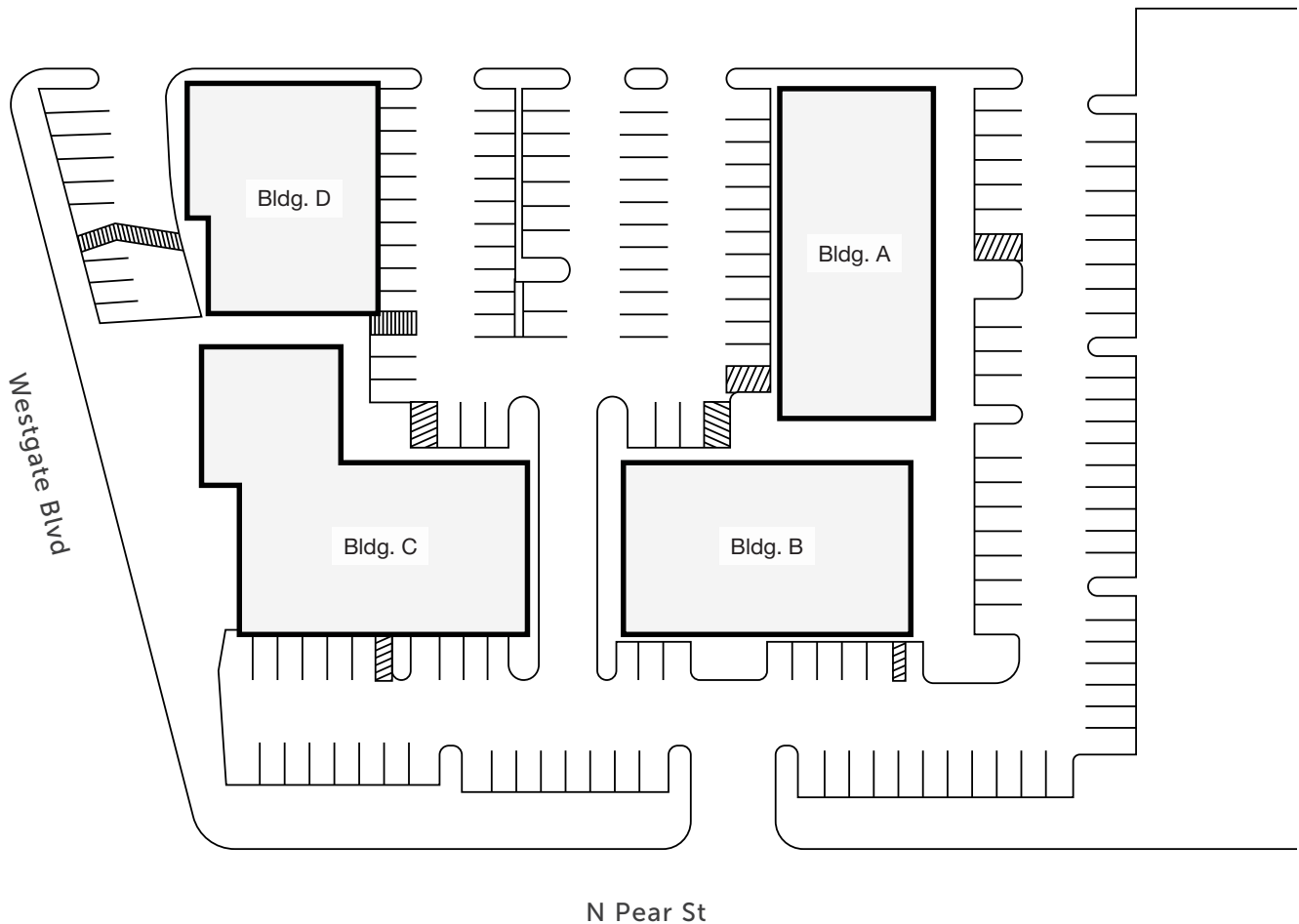
2102 N PEARL ST | TACOMA, WA



CURRENT AVAILABILITIES

Building	Suite	Size	Lease Rate	Available
A	300	2,500 SF	\$28/SF/YR, MG	Now
A	301	1,750 SF	\$28/SF/YR, MG	Now
A	302	750 SF	\$28/SF/YR, MG	6/1/2026

Comment: Suite 301 & Suite 302 can leased together for a combined total of 2,500 SF
 Suites 300 – 302 can be leased together for a combined total of 5,000 SF



CHRIS HIGHSMITH
 253.779.2402
 chighsmith@neilwalter.com

BRIANA HICKEY
 253.779.2424
 bhickey@neilwalter.com

1940 East D St, #100
 Tacoma, WA 98421
 253.779.8400
 www.neilwalter.com

All information references in this document are approximate. The information contained herein is contained from sources deemed reliable. It is provided without representation, warranty, or guarantee, expressed or implied as to accuracy. Prospective buyer or tenant should conduct its own independent investigation relating to the property, government codes and regulations, allowed uses, and all other matters, regardless of whether they are referred to or contained in this document.

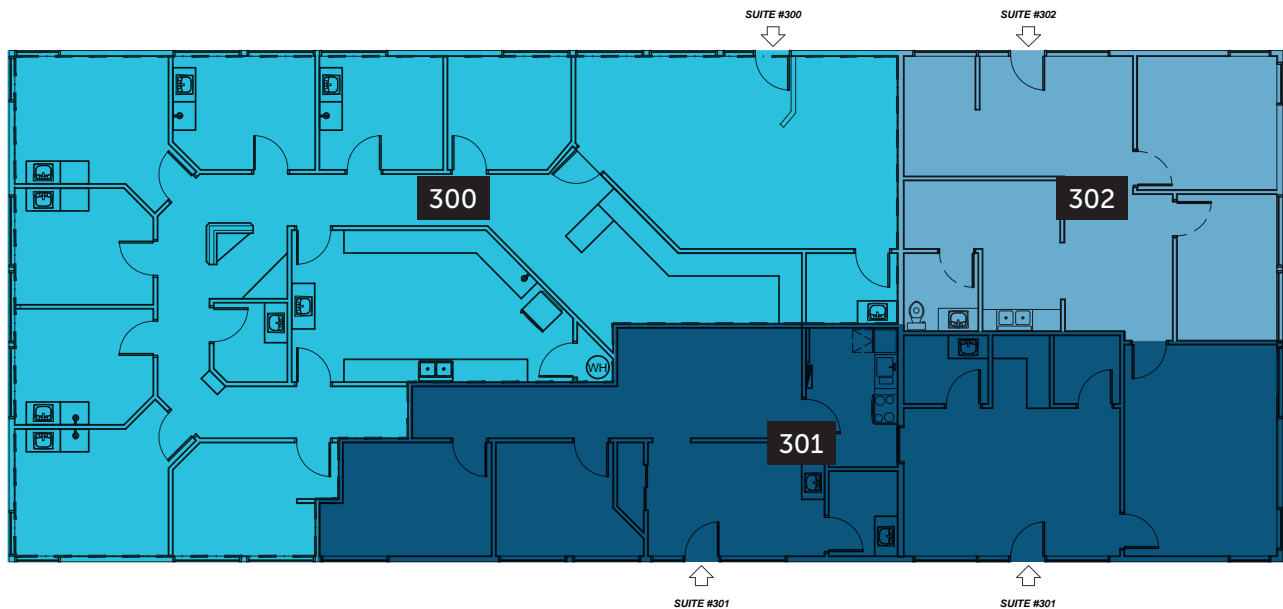
WESTGATE TERRACE OFFICE PARK

2102 N PEARL ST | TACOMA, WA



Building	Suite	Size	Lease Rate	Available
A	300	2,500 SF	\$28/SF/YR, MG	Now
A	301	1,750 SF	\$28/SF/YR, MG	Now
A	302	750 SF	\$28/SF/YR, MG	6/1/2026

Comment: Suite 301 & Suite 302 can leased together for a combined total of 2,500 SF
Suites 300 – 302 can be leased together for a combined total of 5,000 SF



CHRIS HIGHSMITH
253.779.2402
chighsmith@neilwalter.com

BRIANA HICKEY
253.779.2424
bhickey@neilwalter.com

1940 East D St, #100
Tacoma, WA 98421
253.779.8400
www.neilwalter.com

All information references in this document are approximate. The information contained herein is contained from sources deemed reliable. It is provided without representation, warranty, or guarantee, expressed or implied as to accuracy. Prospective buyer or tenant should conduct its own independent investigation relating to the property, government codes and regulations, allowed uses, and all other matters, regardless of whether they are referred to or contained in this document.