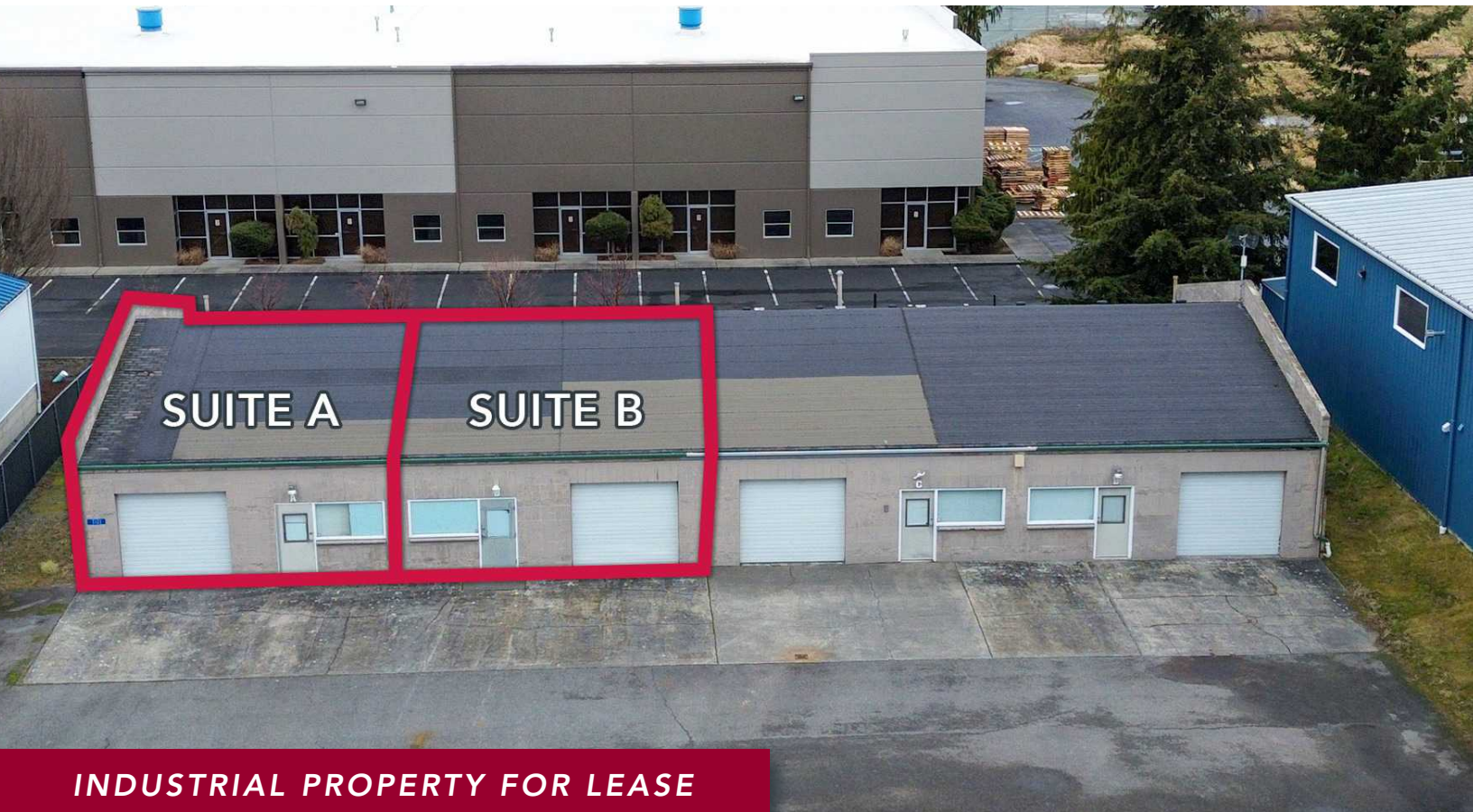


MT. VERNON WAREHOUSE/OFFICE

1101 Dale Lane, Mt. Vernon, WA

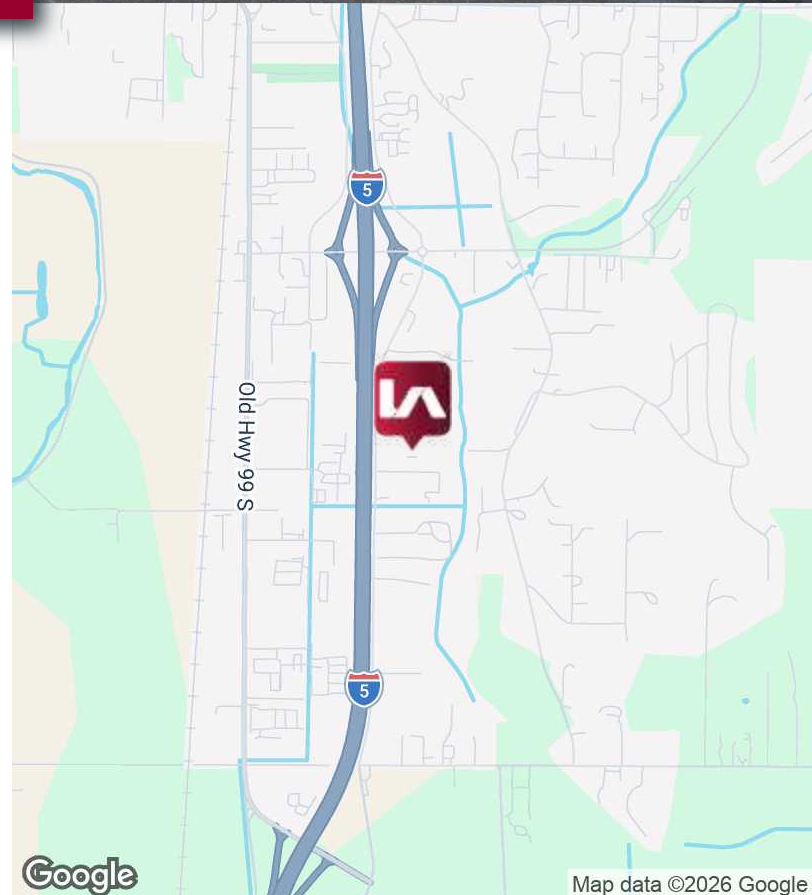


LISTING INFORMATION

| | |
|---------------|---|
| ADDRESS: | 1101 Dale Lane, Suite A & B Mount Vernon, WA |
| AVAILABLE SF: | 1,350 SF - 2,700 SF |
| OFFICE AREA: | 300 SF - 800 SF |
| LOT SIZE: | 15,446 SF |
| CLEAR HEIGHT: | 10' |
| LOADING: | 2 Grade Doors |
| LEASE RATE: | \$1.25 SF/month (NNN) |

COMMENTS

Located just south of the I-5 Anderson Road exit, this recently remodeled warehouse/office space offers quick and convenient access to I-5 and surrounding highways. Situated within a professional business park, the property features good truck maneuverability, 8' drive-in doors, and a functional layout ideal for a variety of industrial users.

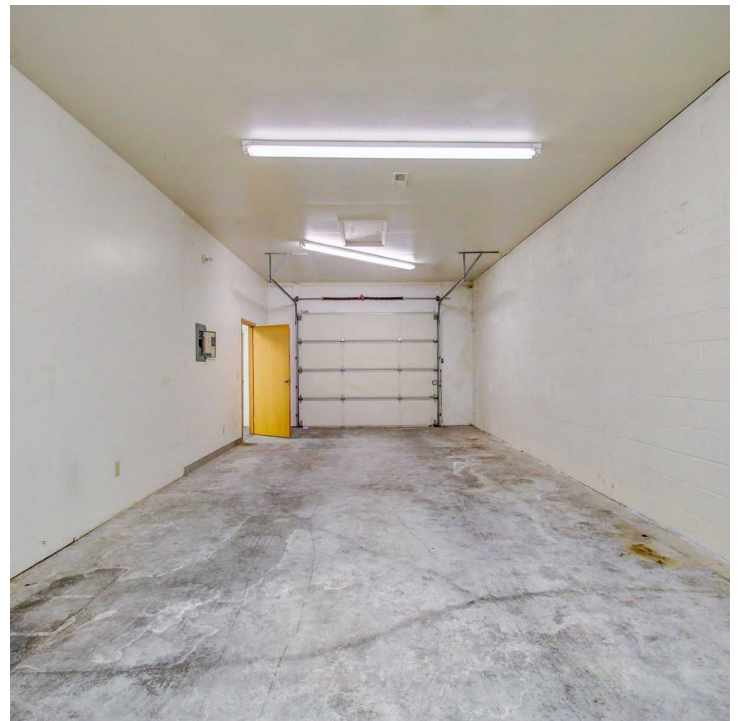
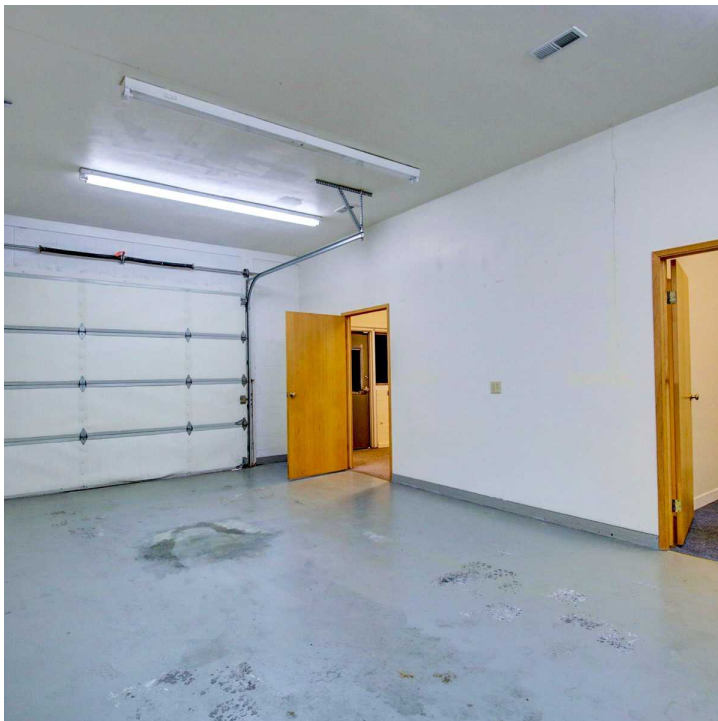


MT. VERNON WAREHOUSE/OFFICE

1101 Dale Lane, Mt. Vernon, WA



PHOTOS



CONTACT

Ryan Aleinikoff

425.818.2654

raleinikoff@lee-associates.com

John Brussa

206.773.2675

jbrussa@lee-associates.com

We obtained the information above from sources we believe to be reliable. However, we have not verified its accuracy and make no guarantee, warranty or representation about it. It is submitted subject to the possibility of errors, omissions, change of price, rental or other conditions, prior sale, lease or financing, or withdrawal without notice. We include projections, opinions, assumptions or estimates for example only, and they may not represent current or future performance of the property. You and your tax and legal advisors should conduct your own investigation of the property and transaction.