

HARBOR STEPS

1201-1215 1st Ave, Seattle, WA



FOR MORE INFORMATION CONTACT

Daniel Seger

206.487.5163

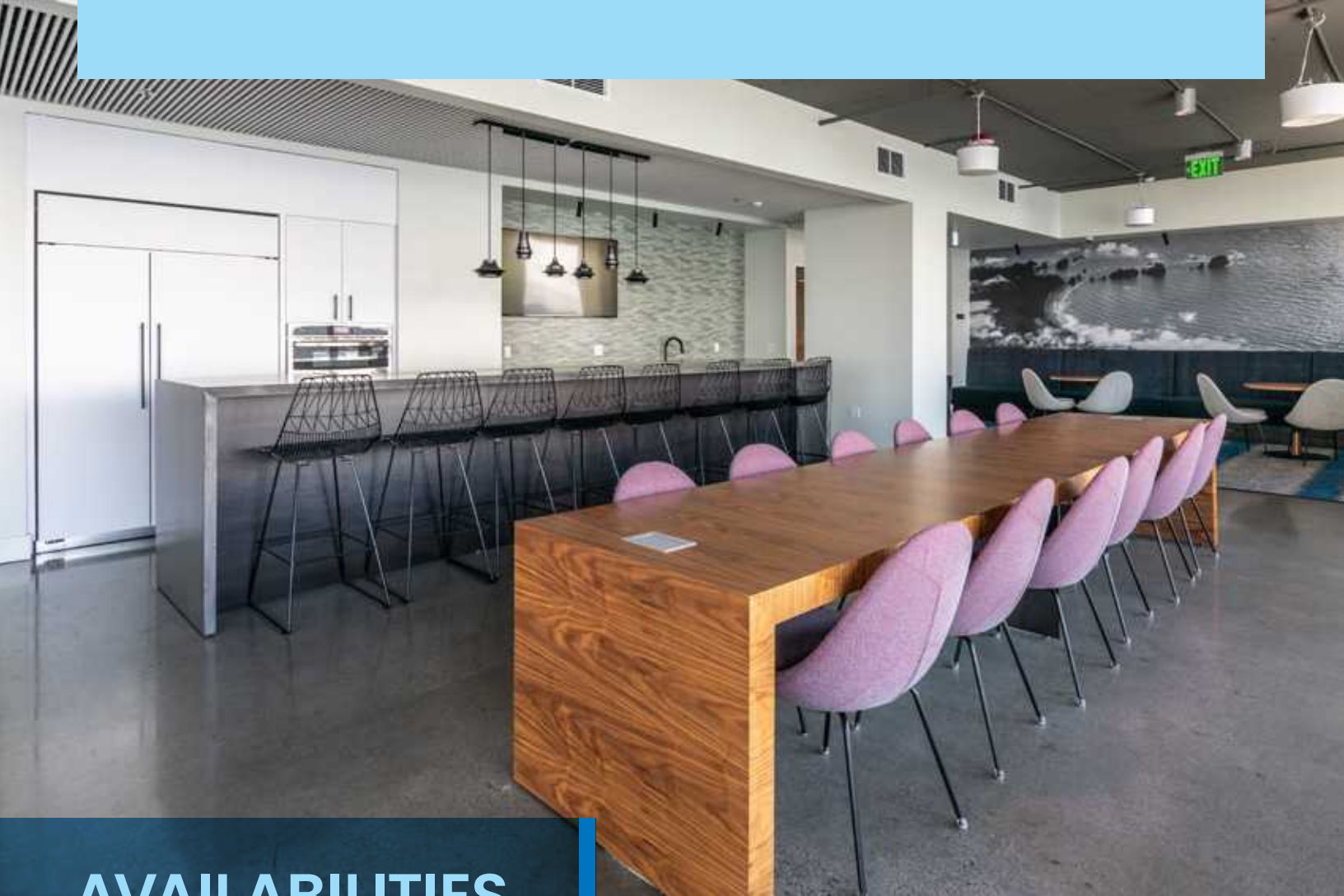
daniel.seger@nrmk.com

Luke Sikma

206.607.6599

luke.sikma@nrmk.com

NEWMARK



AVAILABILITIES

SUITE	SF	AVAILABILITY
Suite 100	4,135 SF	Available Now
Suite 1-M	3,479 SF	Available Now
Suite 300	9,194 SF	Available Now



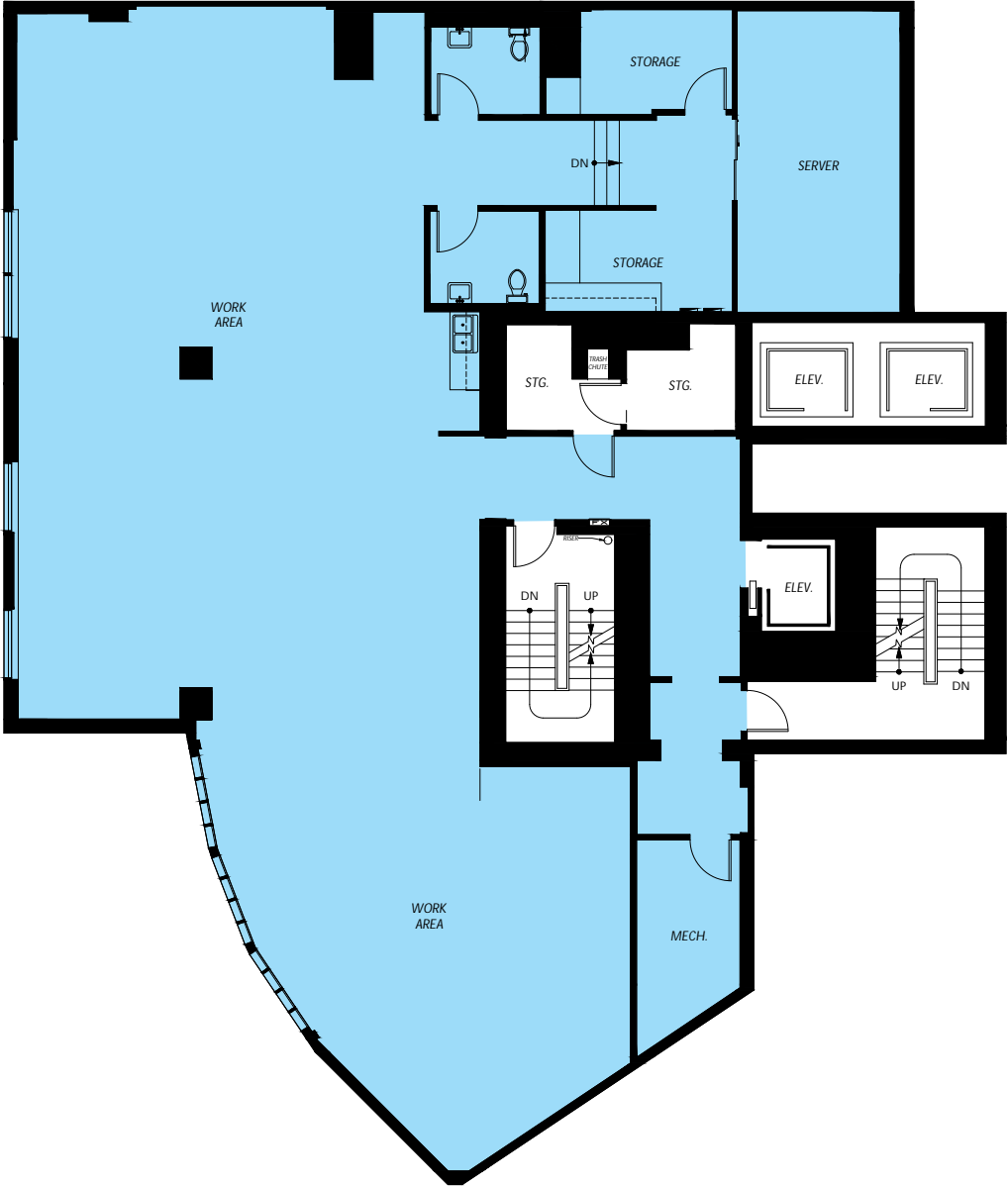
Suite 100

4,135 SF | AVAILABLE NOW



Suite 1-M

3,479 SF | AVAILABLE NOW



Suite 300

9,194 SF | AVAILABLE NOW



BUILDING AMENITIES



FITNESS CENTER



DOG PARK



MEETING AREAS



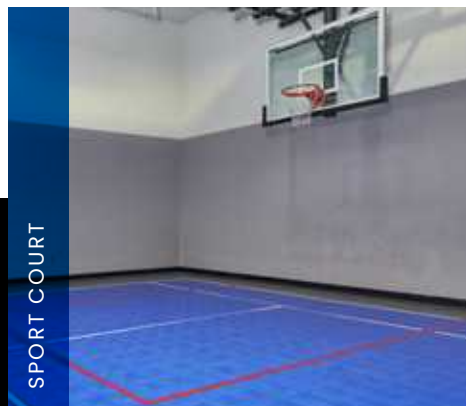
OUTDOOR PATIOS



LOBBY & TENANT LOUNGES



BIKE ROOM



SPORT COURT



GARAGE PARKING



AMENITIES MAP





HARBOR STEPS

1201-1215 1st Ave, Seattle, WA



Daniel Seger | 206.487.5163 | daniel.seger@nmrk.com

Luke Sikma | 206.607.6599 | luke.sikma@nmrk.com

NEWMARK

The distributor of this communication is performing acts for which a real estate license is required. The information contained herein has been obtained from sources deemed reliable but has not been verified and no guarantee, warranty or representation, either express or implied, is made with respect to such information. Terms of sale or lease and availability are subject to change or withdrawal without notice.