

# PACIFIC BUSINESS PARK BUILDING 2



*Industrial Space  
For Lease*

**4,023**  
SF SHELL

**1,093**  
SF OFFICE

**6/1/26**  
AVAILABLE

4,023 SF available, 1,093 SF office

\$0.90/SF shell, \$1.35/SF office add-on + NNN

One grade-level door

Great parking

Tremendous access to I-5 & SR-167 St via S 212th St

Comcast cable available

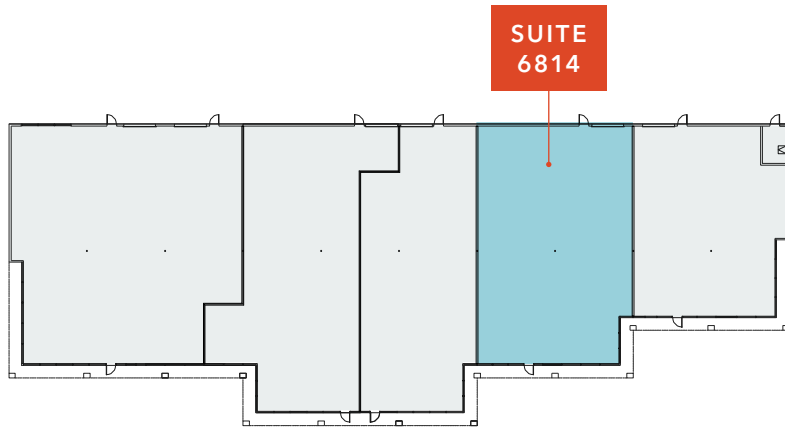
Onsite roaming security guard with patrol car, from  
9 PM-5 AM seven days a week

**DOUG KLEIN, SIOR**  
206.248.7348  
doug.klein@kidder.com

**KRAIG HEETER, SIOR**  
206.248.7313  
kraig.heeter@kidder.com

**KIDDER.COM**

This information supplied herein is from sources we deem reliable. It is provided without any representation, warranty, or guarantee, expressed or implied as to its accuracy. Prospective Buyer or Tenant should conduct an independent investigation and verification of all matters deemed to be material, including, but not limited to, statements of income and expenses. Consult your attorney, accountant, or other professional advisor.



**\$0.90**

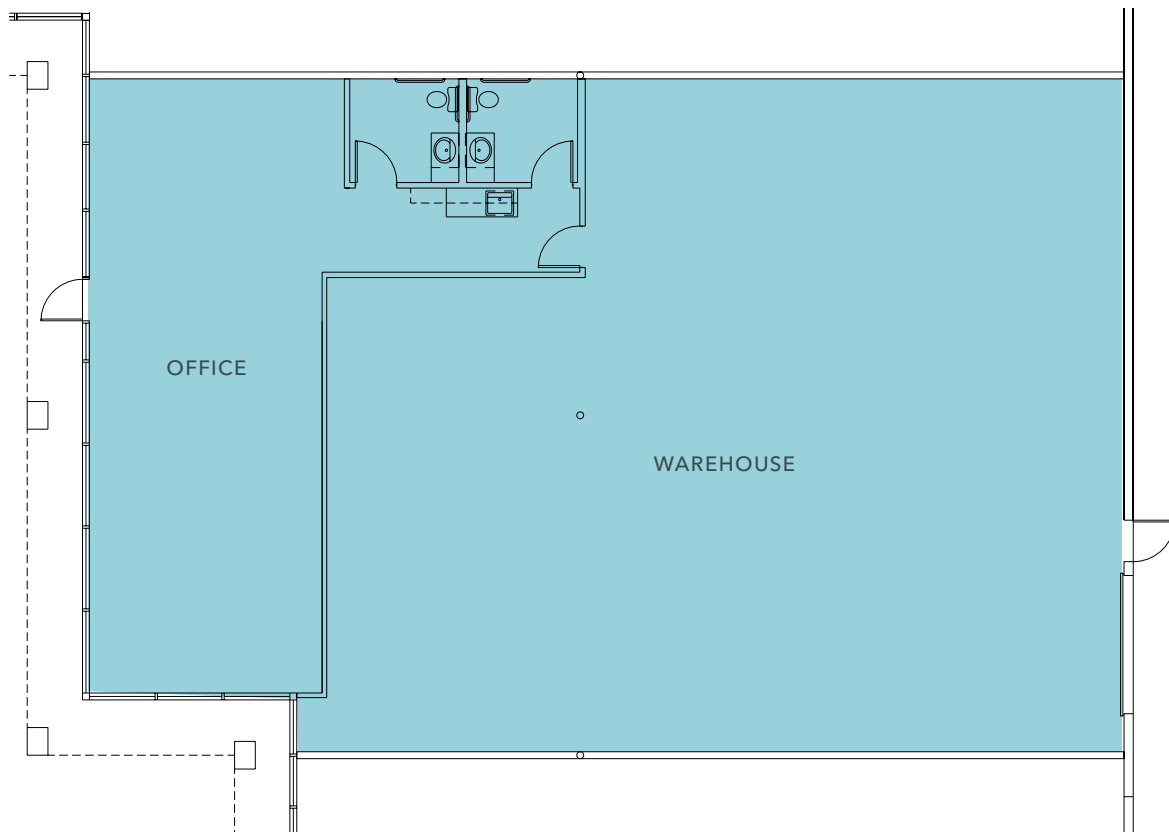
PSF SHELL

**\$1.35**

PSF OFFICE ADD-ON



BUILDING 2



SUITE 6814 FLOORPLAN

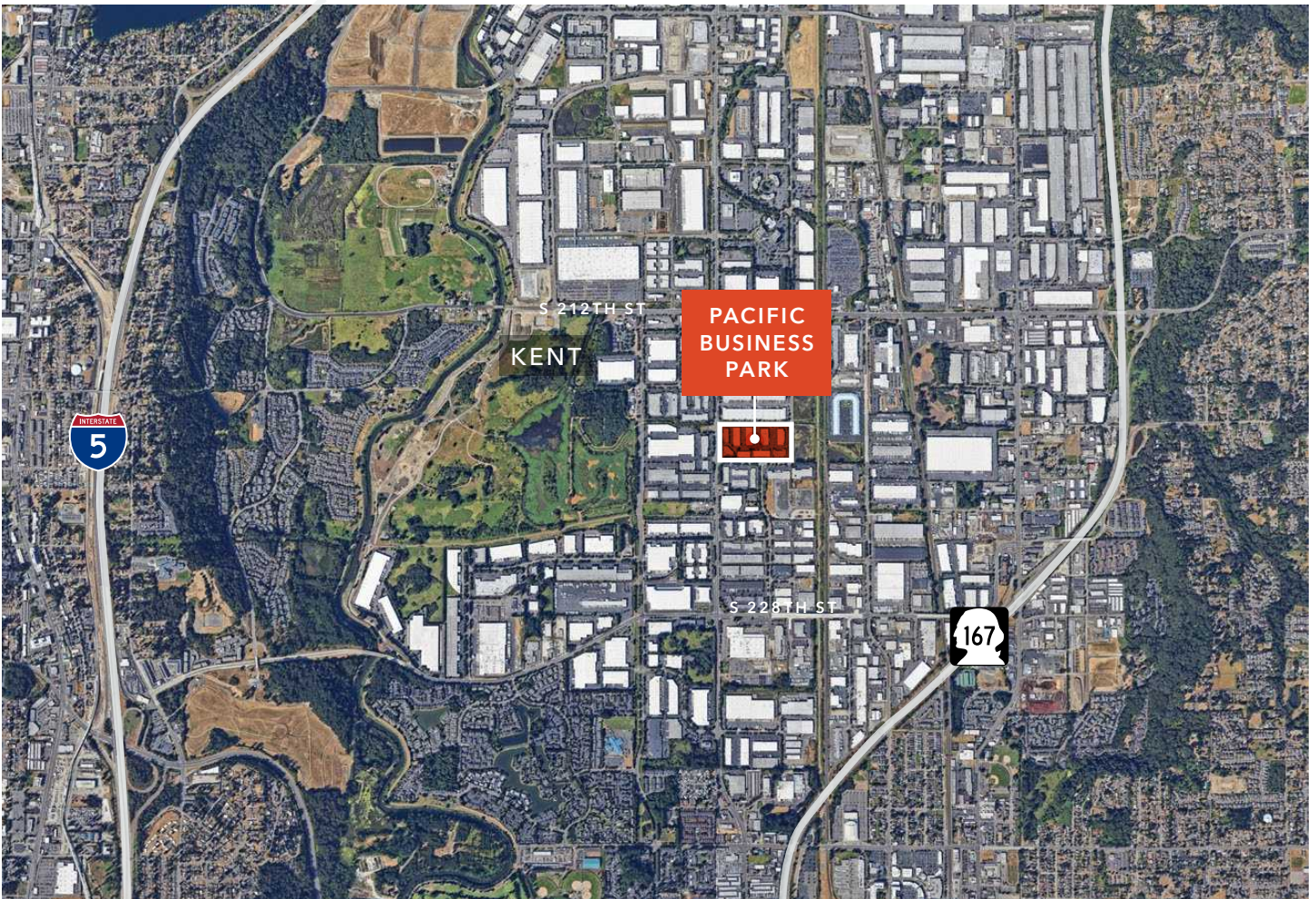
FOR LEASE



*L1*  
ZONING

*5 MIN*  
TO SR-167

*14 MIN*  
TO SEATAC AIRPORT



[KIDDER.COM](http://KIDDER.COM)

This information supplied herein is from sources we deem reliable. It is provided without any representation, warranty, or guarantee, expressed or implied as to its accuracy. Prospective Buyer or Tenant should conduct an independent investigation and verification of all matters deemed to be material, including, but not limited to, statements of income and expenses. Consult your attorney, accountant, or other professional advisor.

