



LAKEWOOD TOWNNE CENTER

10223 GRAVELLY LAKE DR SW | LAKEWOOD, WA 98499

10223 GRAVELLY LAKE DR SW LAKEWOOD, WA 98499



1,400 - 3,200 SF

RETAIL SPACE AVAILABLE

CALL

FOR RATES



63k
TOTAL
POPULATION

45k
DAYTIME
POPULATION

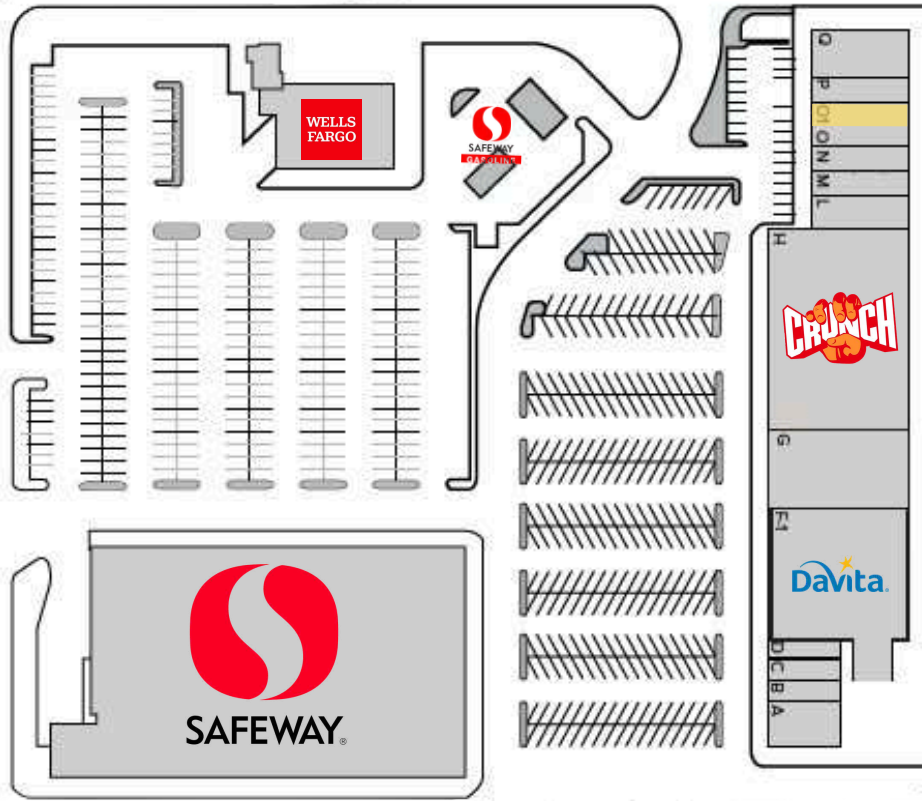
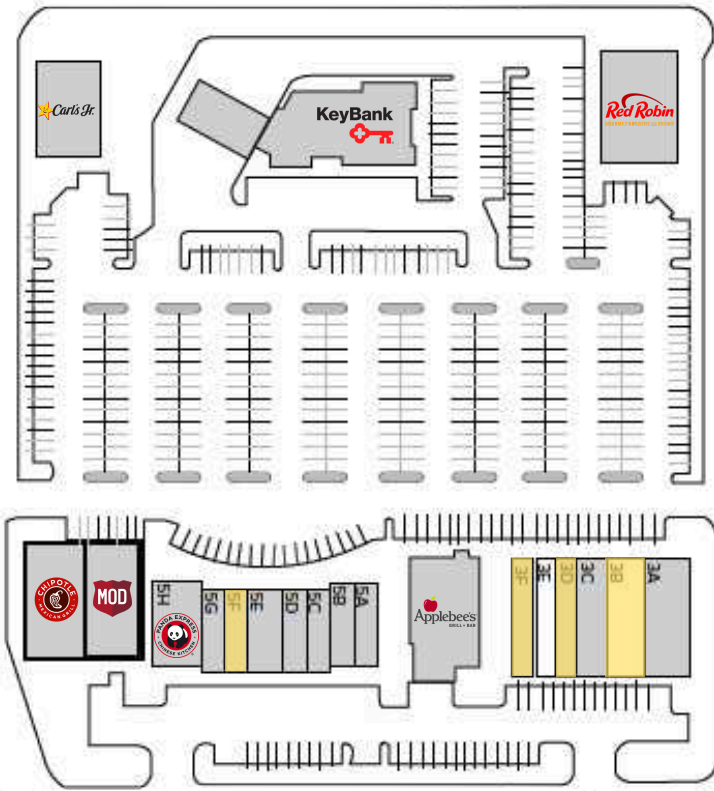
\$108k
AVG. HOUSEHOLD
INCOME

3k
BUSINESSES

63%
ADULTS WITH
COLLEGE EDUCATION

25k
EMPLOYEES

*2024 PROJECTIONS FOR LAKEWOOD, WA. COLLECTED VIA SITESUSA



SUITE 6111-O1
1,200 SF
 AVAILABLE
 (8/1/26)

SUITE 10321-B
3,200 SF
 AVAILABLE

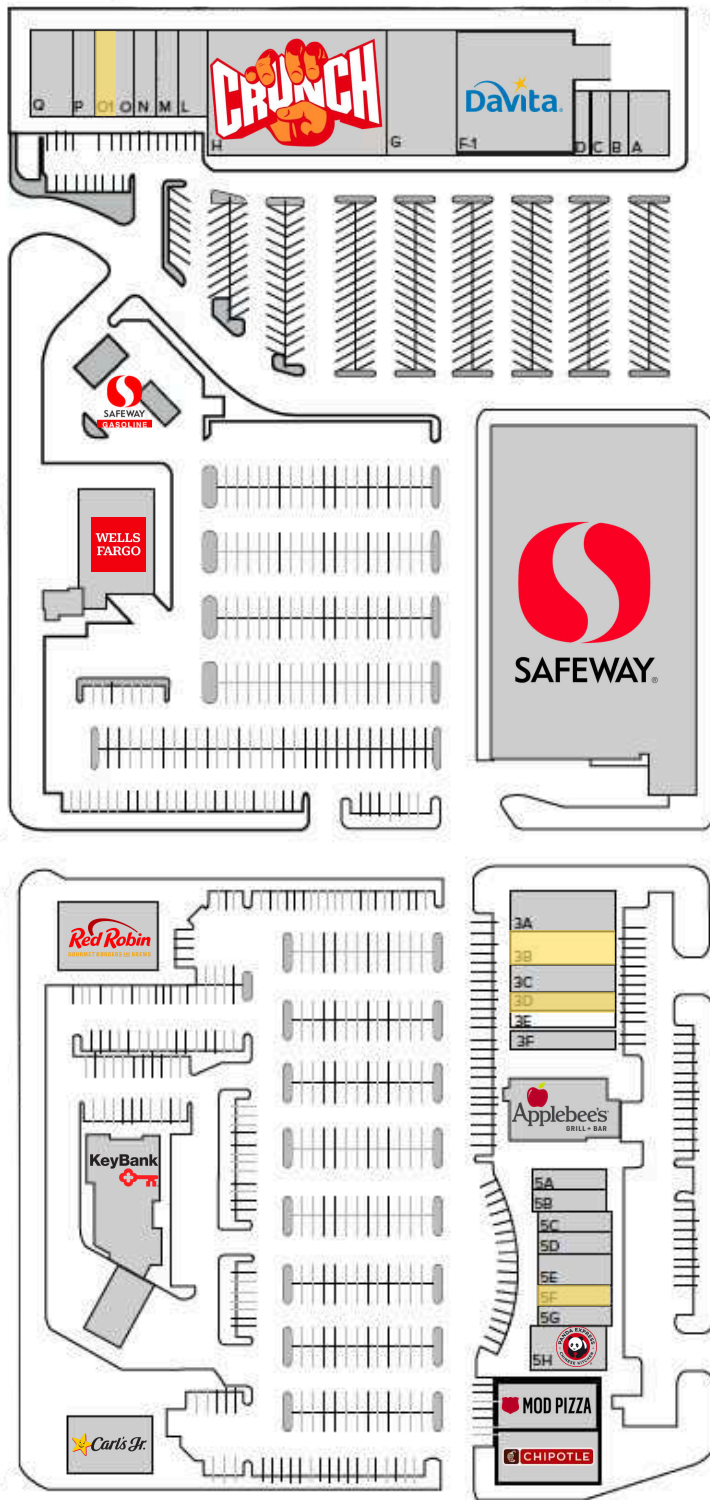
SUITE 10321-D
1,900 SF
 AVAILABLE

SUITE 10321-F
2,015 SF
 AVAILABLE

SUITE 10417-F
1,400 SF
 AVAILABLE

- Premier Location in the Heart of Lakewood
- Anchored by Safeway, Crunch Fitness, & more
- Close Proximity to Target, Barnes & Noble, AMC Theatres, & more
- Designated retail parking





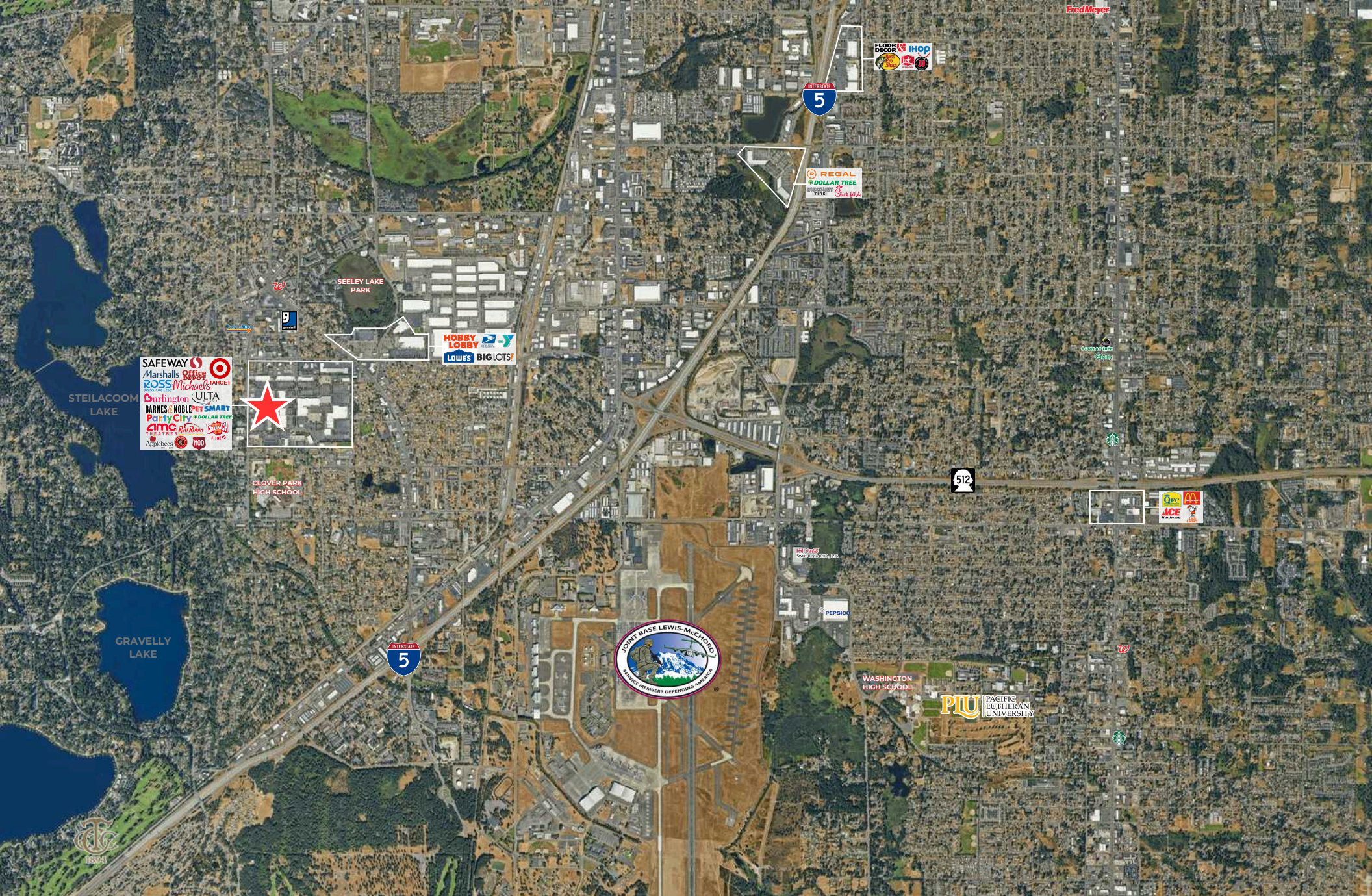
| SUITE | TENANT | SQ FT |
|-------------|----------------------|--------|
| 6111 | | |
| A | BBQ Pete's | 2,406 |
| B | Total Wireless | 1,045 |
| C | Awn's Tailoring | 1,104 |
| D | Hi Tek Nails | 812 |
| F-1 | DaVita | 14,937 |
| G | Daiso | 5,000 |
| H | Crunch Fitness | 20,165 |
| L | Option Care | 2,400 |
| M | Yum Yum Teriyaki | 1,600 |
| N | Subway | 1,600 |
| O | Jackson Hewitt | 1,200 |
| O-1 | AVAILABLE (8/1/2026) | 1,200 |
| P | SuperCuts | 1,320 |
| Q | Music & Arts | 3,280 |

| SUITE | TENANT | SQ FT |
|--------------|-------------------|-------|
| 10321 | | |
| A | Bright Now Dental | 4,000 |
| B | AVAILABLE | 3,200 |
| C | Desert Sun | 2,500 |
| D | AVAILABLE | 1,900 |
| E | LEASED | 1,585 |
| F | AVAILABLE | 2,015 |

| SUITE | TENANT | SQ FT |
|--------------|---------------------|-------|
| 10417 | | |
| A | Cold Stone Creamery | 1,400 |
| B | Herfy's Burgers | 1,380 |
| C | Sky Nails | 1,420 |
| D | IC Poke | 1,400 |
| E | L&L Hawaiian BBQ | 2,025 |
| F | AVAILABLE | 1,400 |
| G | Metro PCS | 1,420 |
| H | Panda Express | 2,780 |

| SUITE | TENANT | SQ FT |
|--------------|-----------|-------|
| 10427 | | |
| A | MOD Pizza | 2,530 |
| B | Chipotle | 2,450 |

| SUITE | TENANT | SQ FT |
|------------------------------|-------------|--------|
| Stand Alone Buildings | | |
| 2 | Safeway | 62,800 |
| A-2 | Safeway Gas | 1,500 |
| 4 | Applebee's | 4,997 |
| 6 | Red Robin | 5,600 |
| 7 | Carl's Jr. | 3,200 |



151k
NB/SB VPD



16k
GRAVELLY LAKE
DR SW VPD



GREG CLOSE

PRESIDENT
GREG@PAADVISORS.COM
425.765.4435

SYDNEY LYBBERT

SENIOR ASSOCIATE BROKER
SYDNEY@PAADVISORS.COM

425.326.3742

