

FOR
LEASE



EVERGREEN SUMMIT RETAIL CENTER

15 SW Everett Mall Way | Everett, WA

Stossi Tsantilas

425.279.7943

stossit@rosenharbottle.com

425.454.3030
rosenharbottle.com

PO Box 5003
Bellevue, WA 98009 - 5003





CLASS A RETAIL/MEDICAL SPACES AVAILABLE

FRONTAGE ON EVERETT MALL WAY

2,362 SF - 4,875 SF Available

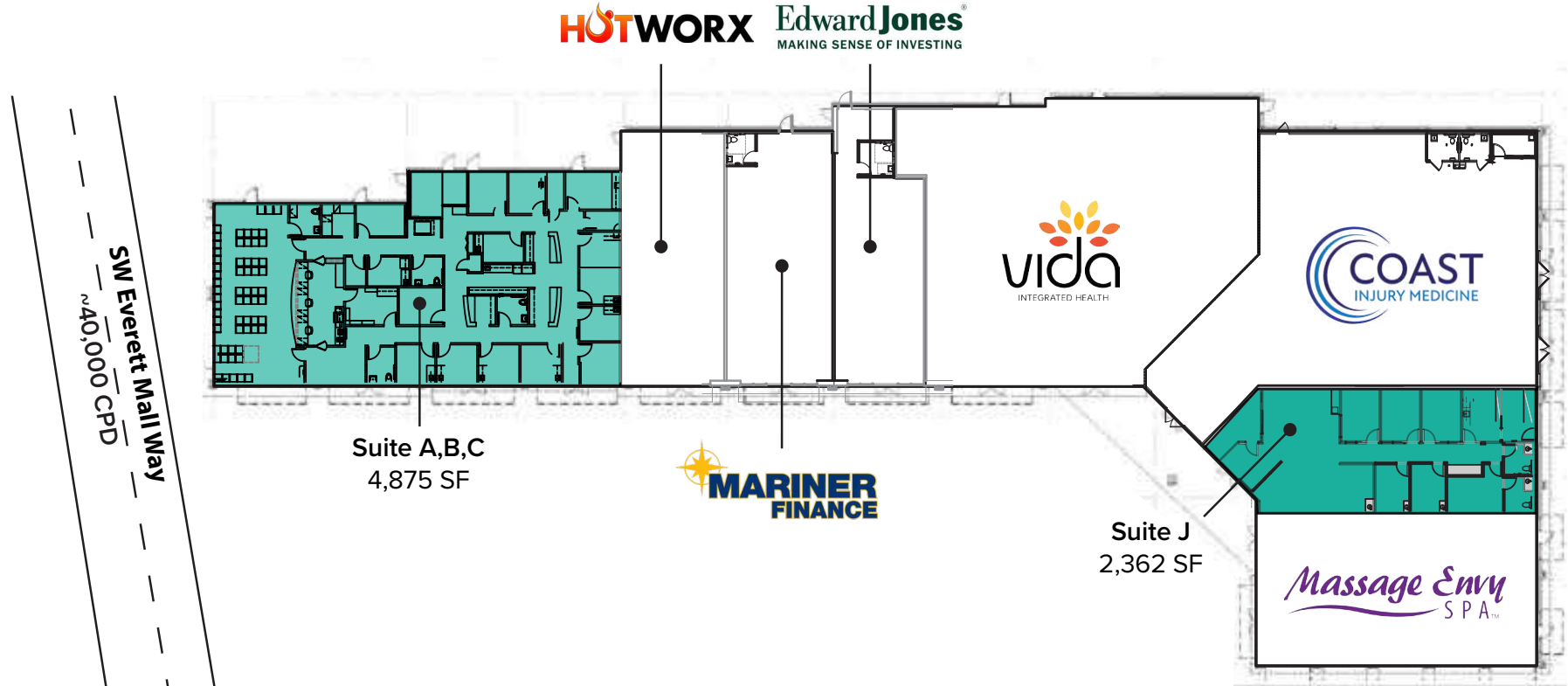
PROPERTY FEATURES:

- High Quality Finishes Throughout
- Building Signage and Pylon Signage on Everett Mall Way
- 40,000 Cars Per Day on Everett Mall Way
- Quick Access to I-5 (169,000 Cars per Day)
- Blocks from Everett Mall
- Large Pylon Sign Slot on Everett Mall Way

The information provided herein has been obtained from sources believed to be reliable, but no representation or warranty, express or implied, is made with respect to the accuracy or completeness of any such information. Each prospective buyer or tenant should independently investigate, evaluate and verify all information provided herein and any other matters deemed material. Please consult your attorney, tax advisor or other professional advisor. The terms of sale or lease set forth herein are subject to change or withdrawal at any time and without notice.

SITE PLAN

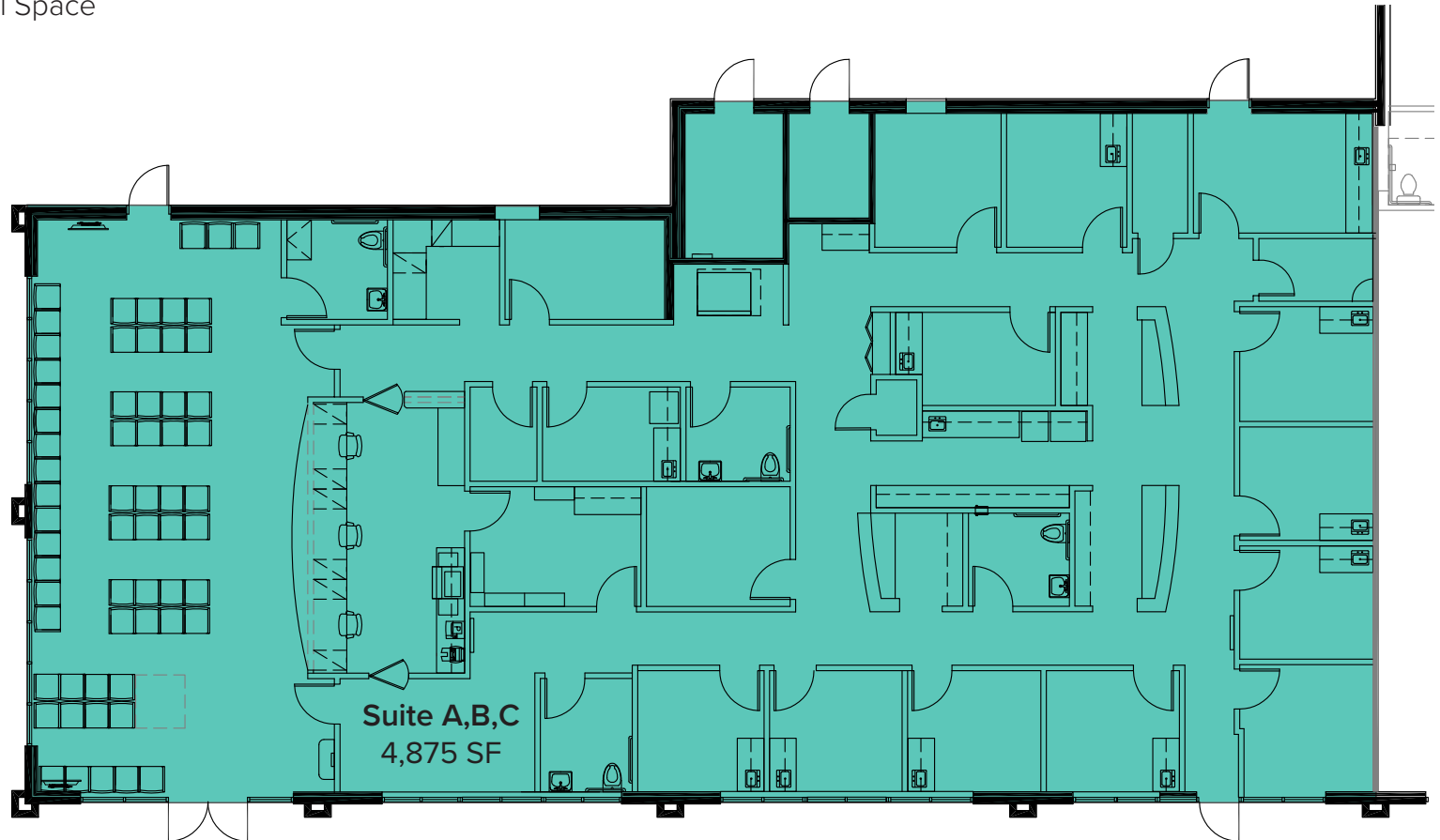
| Suite | Square Feet | Rate | Notes |
|-------|-------------|-----------------|---|
| A,B,C | 4,875 SF | \$35.00/SF, NNN | End cap space with frontage on Everett Mall Way. Fully-built out medical space with break rooms, reception/lobby area, exam rooms, private offices, treatment rooms, restrooms, and office areas. Space is divisible. Available 10/1/2026. |
| J | 2,362 SF | \$29.00/SF, NNN | Former optometry space with 5+ exam rooms, staff lounge, lab, private office, and 2 restrooms. Available now. |



The information provided herein has been obtained from sources believed to be reliable, but no representation or warranty, express or implied, is made with respect to the accuracy or completeness of any such information. Each prospective buyer or tenant should independently investigate, evaluate and verify all information provided herein and any other matters deemed material. Please consult your attorney, tax advisor or other professional advisor. The terms of sale or lease set forth herein are subject to change or withdrawal at any time and without notice.

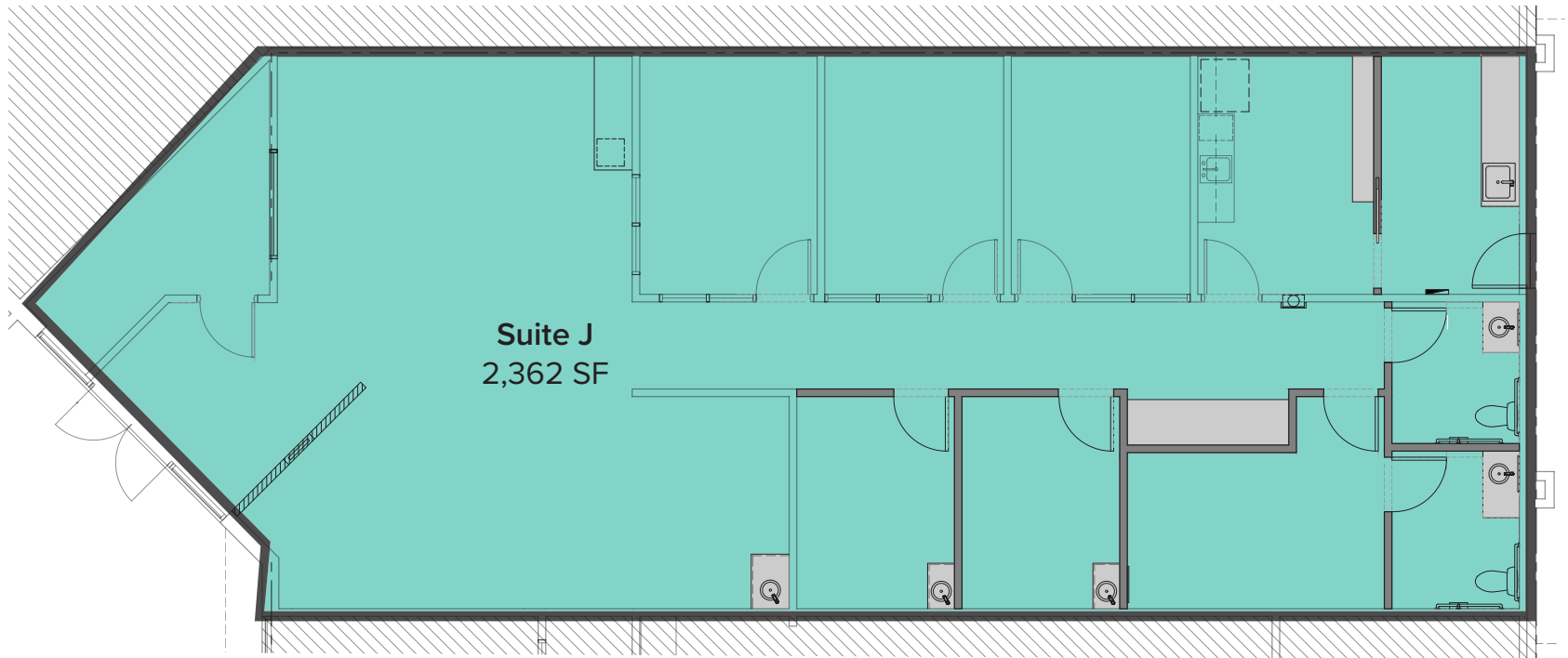
SUITE A,B,C FLOOR PLAN

- Available 10/1/2026
- End Cap Space
- Frontage on Everett Mall Way
- Fully Built-Out Medical Space
- Reception/Lobby
- Restrooms



SUITE J FLOOR PLAN

- **Available Now**
- High Quality Finishes Throughout
- 5+ Exam Rooms
- Private Offices
- 2 Restrooms
- Staff Lounge



LOCATION MAP

