

Port Manufacturing Campus

1510 & 1616 St. Paul Ave, Tacoma, Washington



AVAILABLE NOW

141,076 Square Feet on 7.75 Acres

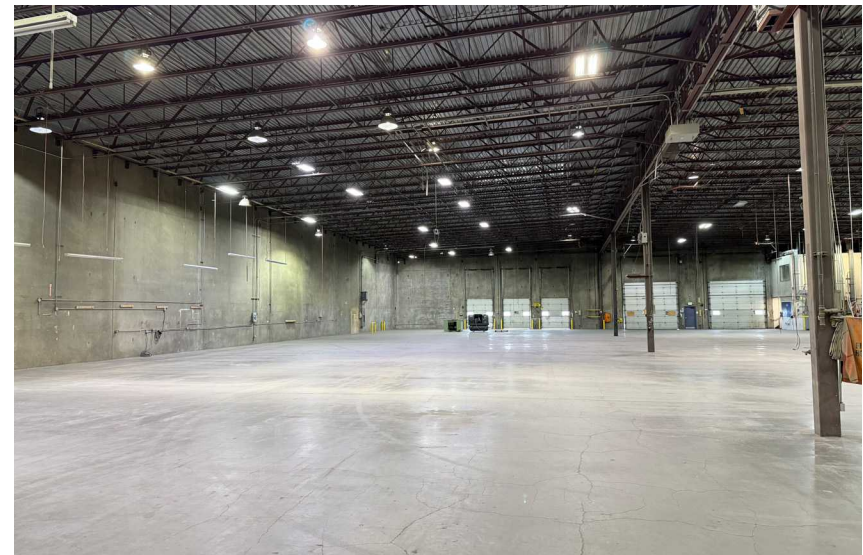


COMMERCIAL REAL ESTATE SERVICES
NORTHWEST LOGISTICS ADVISORS

Billy Moultrie
Principal
D 253.444.3022

Andrew Hull
Principal
D 253.444.3023

Christian Mattson, SIOB
Principal
D 253.444.3021

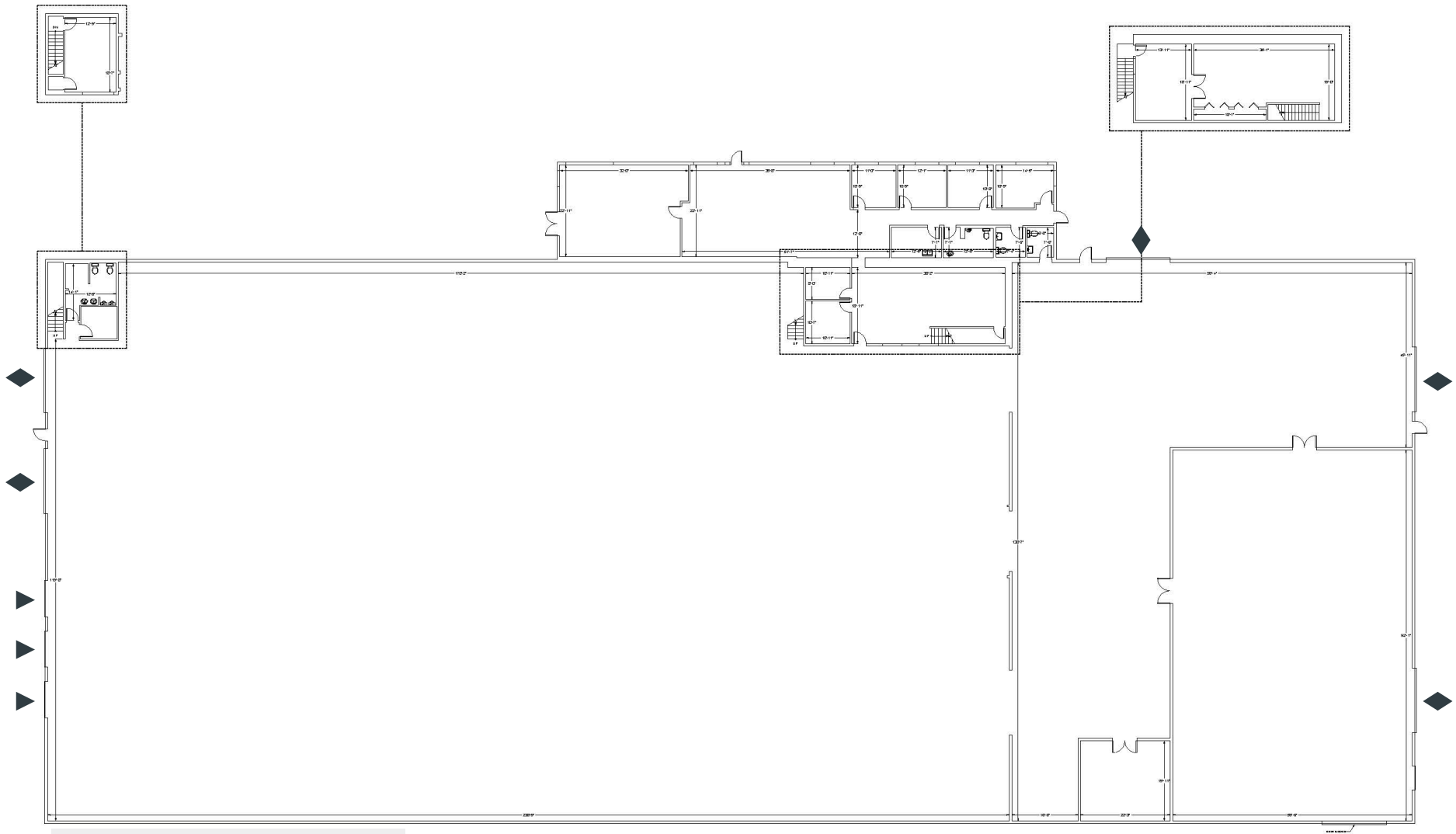


- 3 1,600 amps of 277/480 volt power
- 3 Power drops throughout the warehouse
- 3 Available Now
- 3 Designed for flexible distribution and manufacturing operations

1510 St Paul Ave, Tacoma

Building Size	52,116 RSF
Office Size	5,572 SF
Loading	Six (6) - 12' x 16' Grade Level Doors Three (3) - Dock High Doors
Clear Height	21' - 24'
Zoning	PMI (Port Maritime Industrial)
Heavy Power	1,600 amps of 277/480 volt
Fire Suppression	Combination of wet and dry system
Yard Area	Approx. 8,000 SF of side yard / parking
Auto Parking	Ample

FLOOR PLAN - 52,116 SF

**LEGEND**

▼ DOCK PLATFORM DOCKS

◆ GRADE LEVEL DOORS



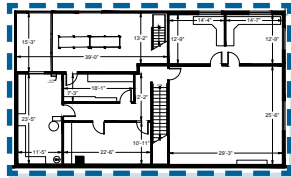
- 3 Heavy power
- 3 Paved yard with oversized grade door access to the building
- 3 Available Now
- 3 Prime location in the Port of Tacoma with close proximity to freeways

1616 St Paul Ave, Tacoma

Building Size	86,960 RSF
Office Size	Main Office: 6,000 SF Two-Story Office: 4,160 SF
Covered Platform	5,515 SF
Loading	10 Oversized Grade Level Doors 3 Dock Platform Docks with Levelers
Clear Height	24'
Zoning	PMI (Port Maritime Industrial)
Heavy Power	2,000 amps of 277/480 volt
Fire Suppression	Wet System
Yard Area	24,000 SF of Paved Yard
Rail	Dedicated Rail Spur Along Dock Platform
Auto Parking	Ample

FLOOR PLAN - 86,960 SF

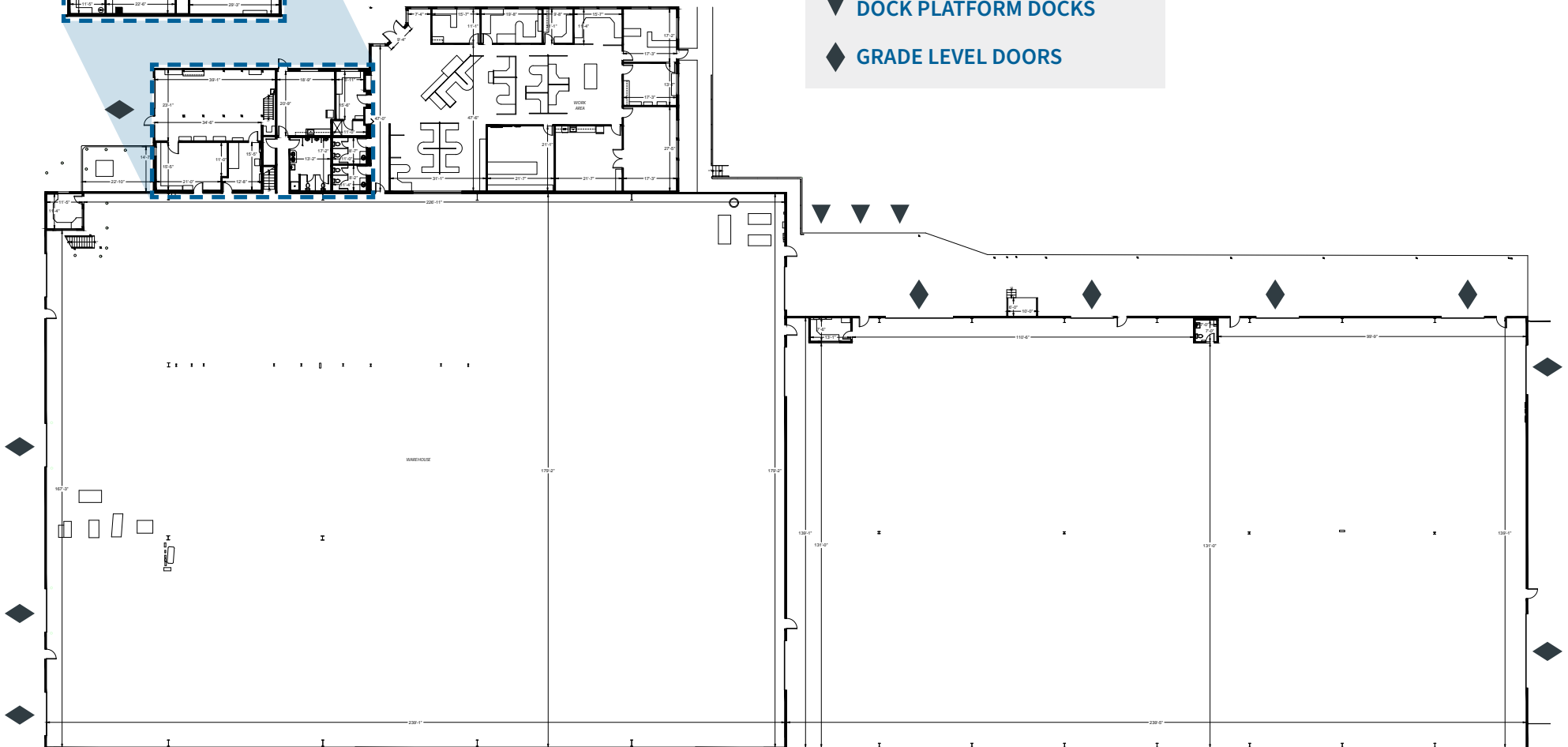
SECOND FLOOR MEZZANINE



LEGEND

▼ DOCK PLATFORM DOCKS

◆ GRADE LEVEL DOORS



LOCATION FEATURES

IDEAL LOCATION

PMC has unmatched location advantages sitting within the Port of Tacoma proper, with proximity to freeways, intermodals, Downtown Seattle and Seattle-Tacoma International Airport.

PORT MARITIME AND INDUSTRIAL (PMI) ZONING

PMI Zoning is one of, if not the most permissible zones in the Port of Tacoma, allowing for wholesale distribution, container and trailer storage, yard uses, manufacturing, and other uses.

HEAVY HAUL CORRIDOR LOCATION

St. Paul Avenue is part of the City of Tacoma's Heavy Haul Industrial Corridor, accommodating vehicles in excess of legal weight limits with a special permit.



CONTACT:

Billy Moultrie

Principal

D 253.444.3022

Andrew Hull

Principal

D 253.444.3023

Christian Mattson, SIOR

Principal

D 253.444.3021