

NATIONAL BUILDING

1008 WESTERN AVENUE, SEATTLE, WA

*New Rate: \$22/FS/Yr for
any spaces on floors 1 - 4*



JEFF HUNTINGTON 206.296.9619 | jeff.huntington@kidder.com

JIM LOVSTED, CPM 206.398.2271 | jim.lovsted@kidder.com

FEATURES

Beautifully renovated classic timber and brick building in downtown Seattle

Creative brick & timber space

Easy access to nearby public transportation

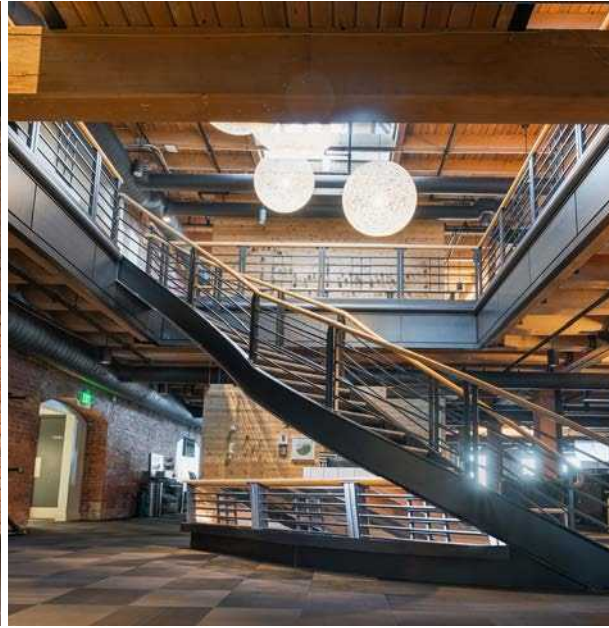
Walking distance to the new Seattle Waterfront, ferry terminals, Pike Place Market, CBD and Pioneer Square

On-site storage, secure bike room and building shower

Operable windows

KIDDER.COM

This information supplied herein is from sources we deem reliable. It is provided without any representation, warranty, or guarantee, expressed or implied as to its accuracy. Prospective Buyer or Tenant should conduct an independent investigation and verification of all matters deemed to be material, including, but not limited to, statements of income and expenses. Consult your attorney, accountant, or other professional advisor. All Kidder Mathews designs are the sole property of Kidder Mathews. Branded materials and layouts are not authorized for use by any other firm or person.



NEW RATE \$22/FS/YR

AVAILABLE SPACES

| Suite | RSF | Notes |
|-------|--------|--|
| 201 | ±4,294 | Mix of open space, privates & conference rooms |
| 220 | ±4,941 | Mix of open space & privates |
| 302 | ±8,638 | Mix of open & enclosed space, private shower |
| 307 | ±2,138 | Open space & 3 enclosed spaces & kitchen |
| 400 | ±8,487 | Open plan with mix privates & conference rooms |
| 403 | ±2,582 | Open plan with 3 enclosed rooms |
| 410 | ±2,788 | Open plan with one private office, kitchen |
| 1001 | ±2,706 | Retail/restaurant/office, direct office off building lobby or via post alley |
| 1007 | ±2,192 | Office/retail open plan w/ Madison frontage |

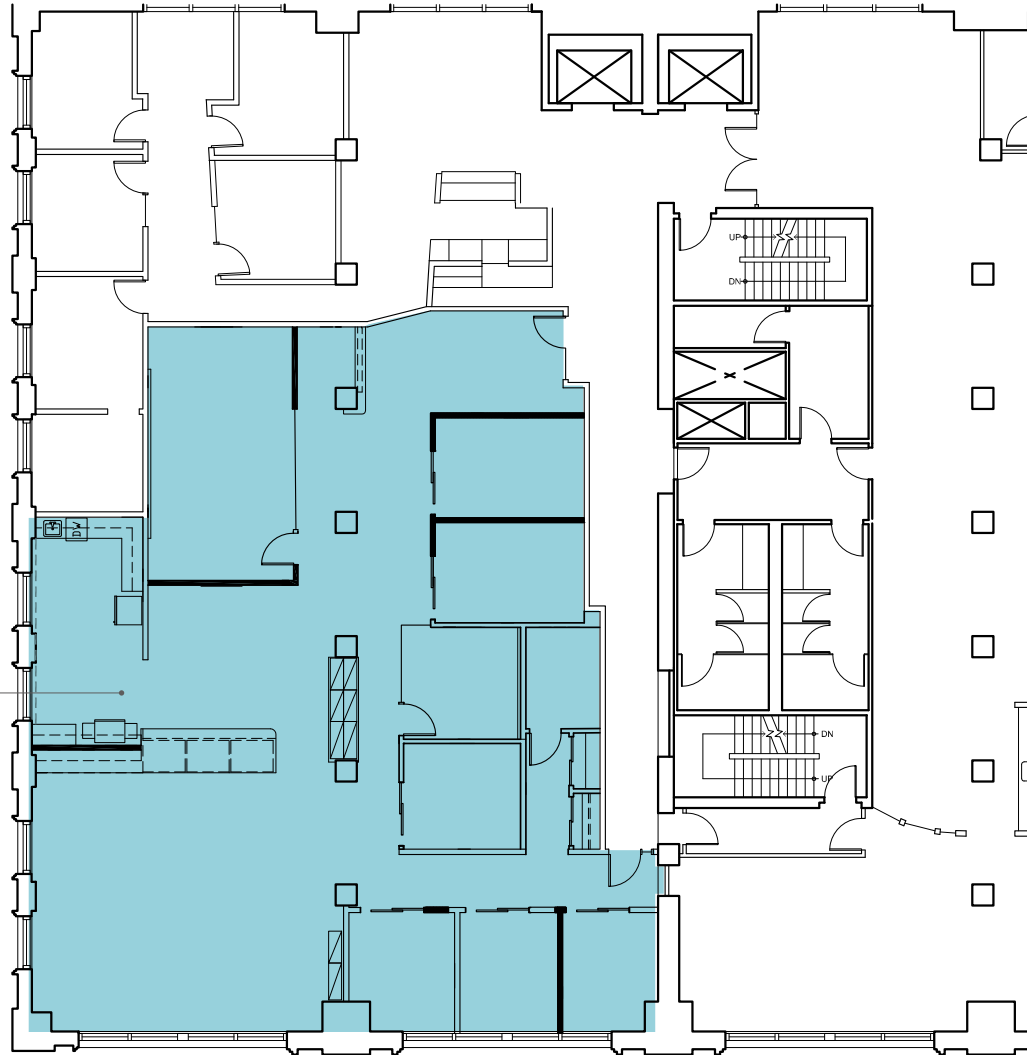
KIDDER.COM

This information supplied herein is from sources we deem reliable. It is provided without any representation, warranty, or guarantee, expressed or implied as to its accuracy. Prospective Buyer or Tenant should conduct an independent investigation and verification of all matters deemed to be material, including, but not limited to, statements of income and expenses. Consult your attorney, accountant, or other professional advisor. All Kidder Mathews designs are the sole property of Kidder Mathews. Branded materials and layouts are not authorized for use by any other firm or person.



SUITE 201

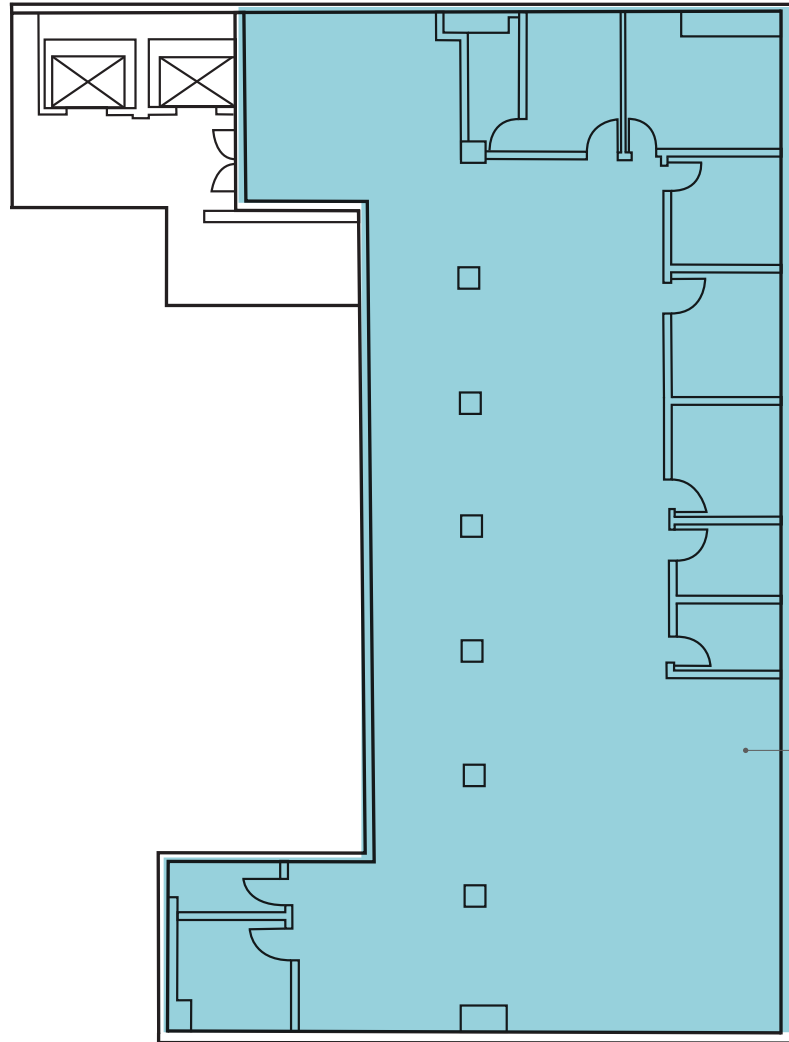
SUITE 201
±4,294 RSF



KIDDER.COM

This information supplied herein is from sources we deem reliable. It is provided without any representation, warranty, or guarantee, expressed or implied as to its accuracy. Prospective Buyer or Tenant should conduct an independent investigation and verification of all matters deemed to be material, including, but not limited to, statements of income and expenses. Consult your attorney, accountant, or other professional advisor. All Kidder Mathews designs are the sole property of Kidder Mathews. Branded materials and layouts are not authorized for use by any other firm or person.

SUITE 202



SUITE 202
±4,941 RSF



KIDDER.COM

This information supplied herein is from sources we deem reliable. It is provided without any representation, warranty, or guarantee, expressed or implied as to its accuracy. Prospective Buyer or Tenant should conduct an independent investigation and verification of all matters deemed to be material, including, but not limited to, statements of income and expenses. Consult your attorney, accountant, or other professional advisor. All Kidder Mathews designs are the sole property of Kidder Mathews. Branded materials and layouts are not authorized for use by any other firm or person.

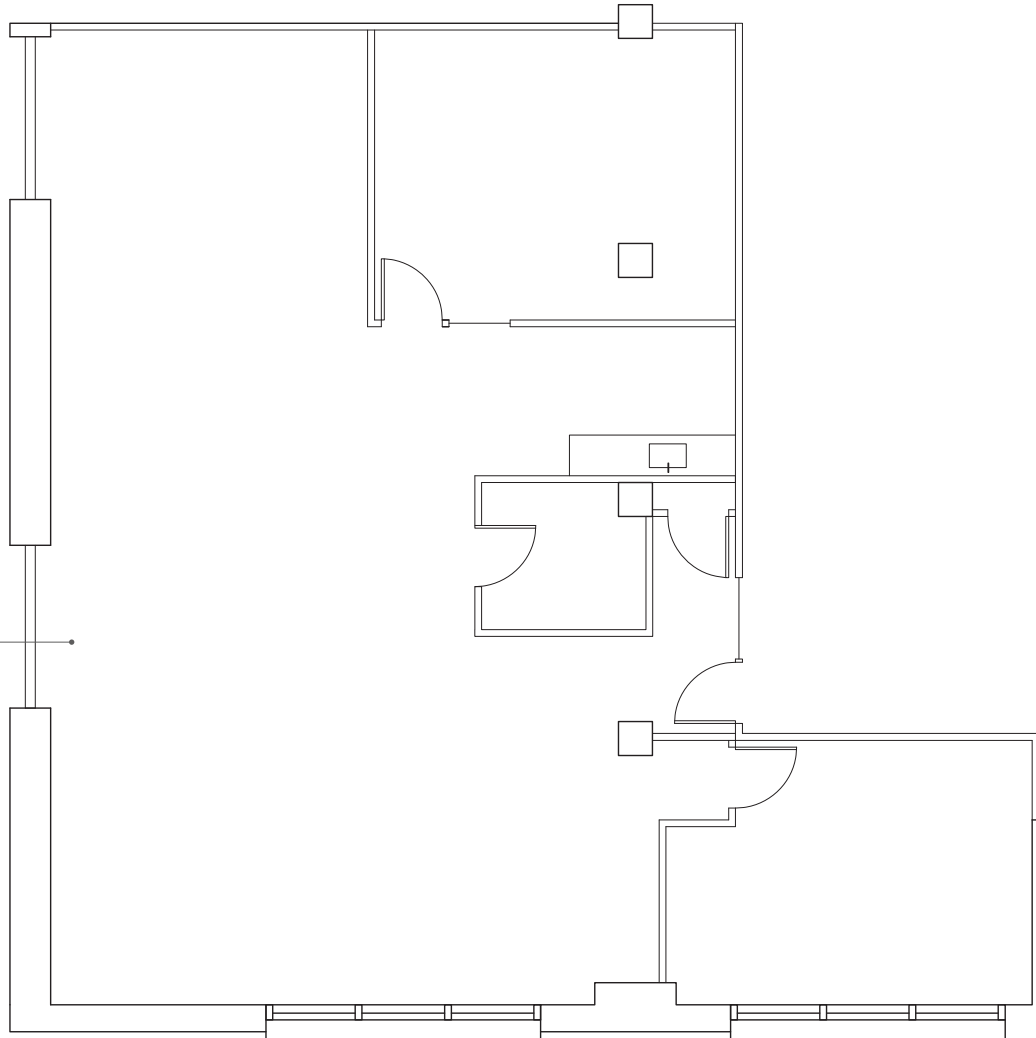
SUITE 302



SUITE 302
±8,638 RSF

SUITE 307

SUITE 307
±2,138 RSF

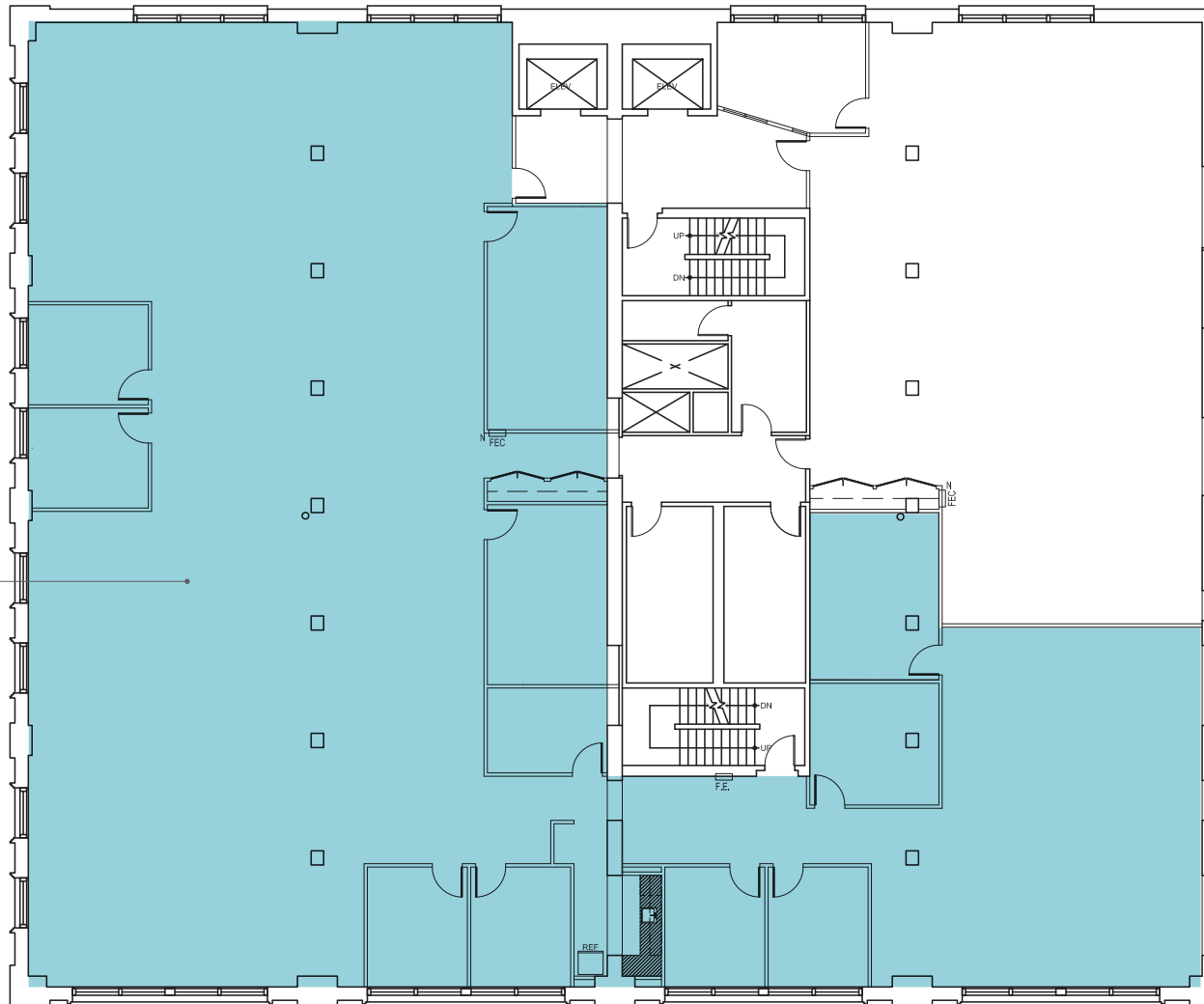


KIDDER.COM

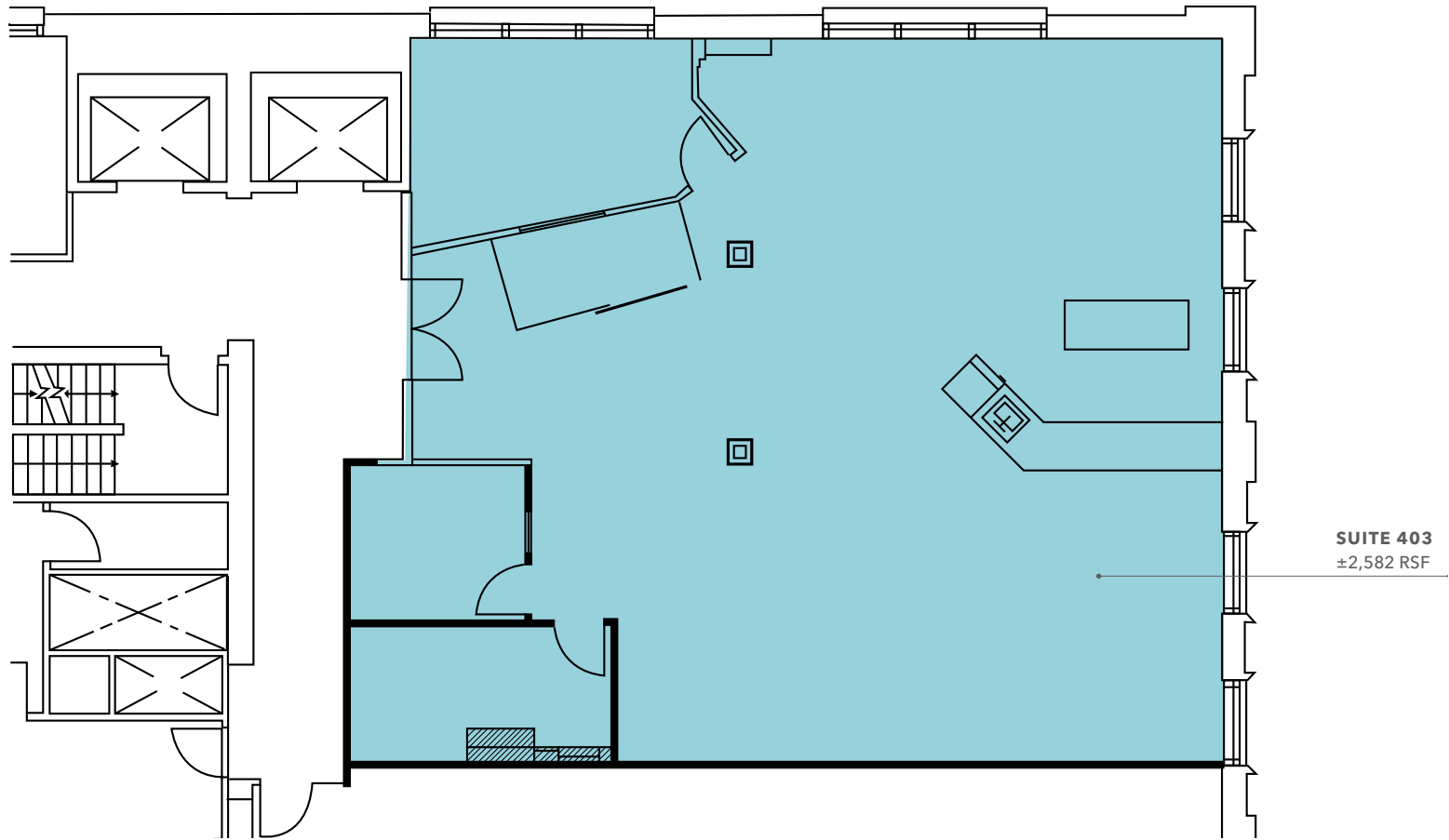
This information supplied herein is from sources we deem reliable. It is provided without any representation, warranty, or guarantee, expressed or implied as to its accuracy. Prospective Buyer or Tenant should conduct an independent investigation and verification of all matters deemed to be material, including, but not limited to, statements of income and expenses. Consult your attorney, accountant, or other professional advisor. All Kidder Mathews designs are the sole property of Kidder Mathews. Branded materials and layouts are not authorized for use by any other firm or person.

SUITE 400

SUITE 400
±8,487 RSF



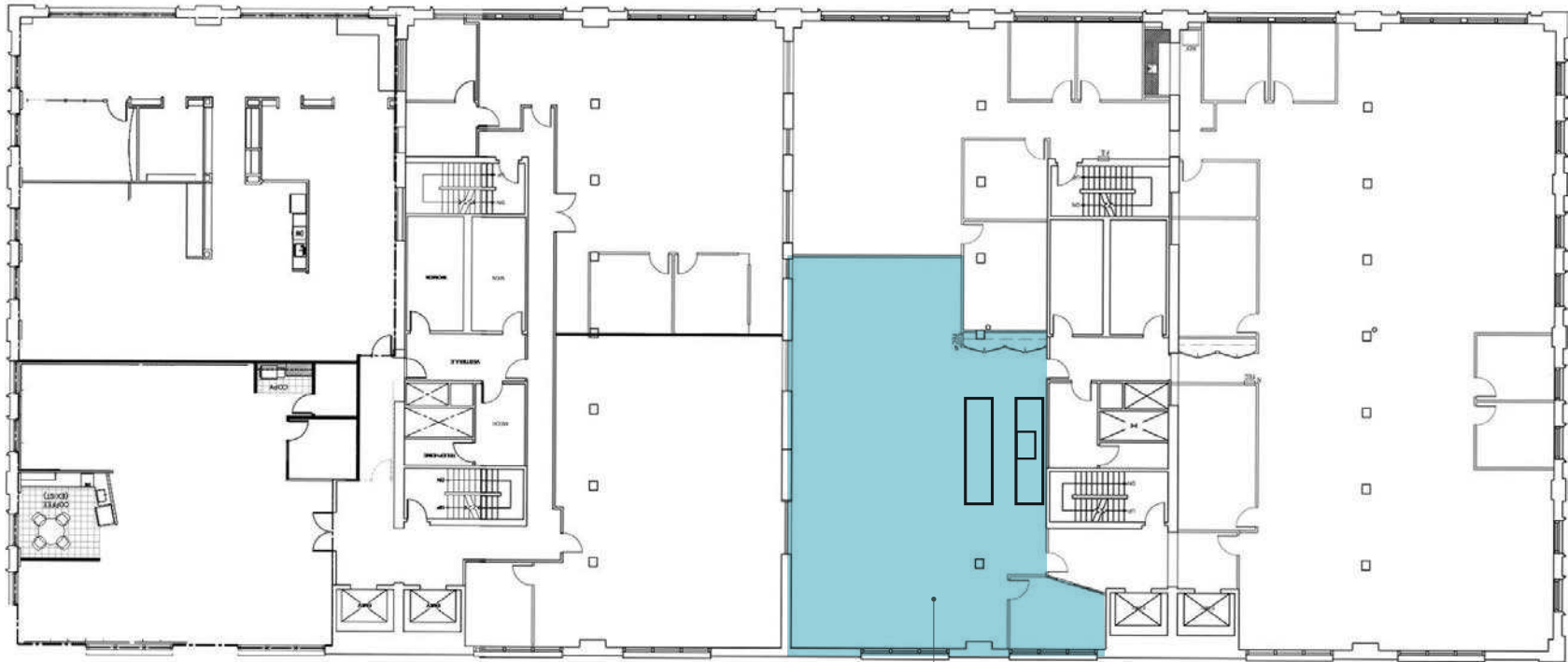
SUITE 403



SUITE 403
±2,582 RSF



SUITE 410

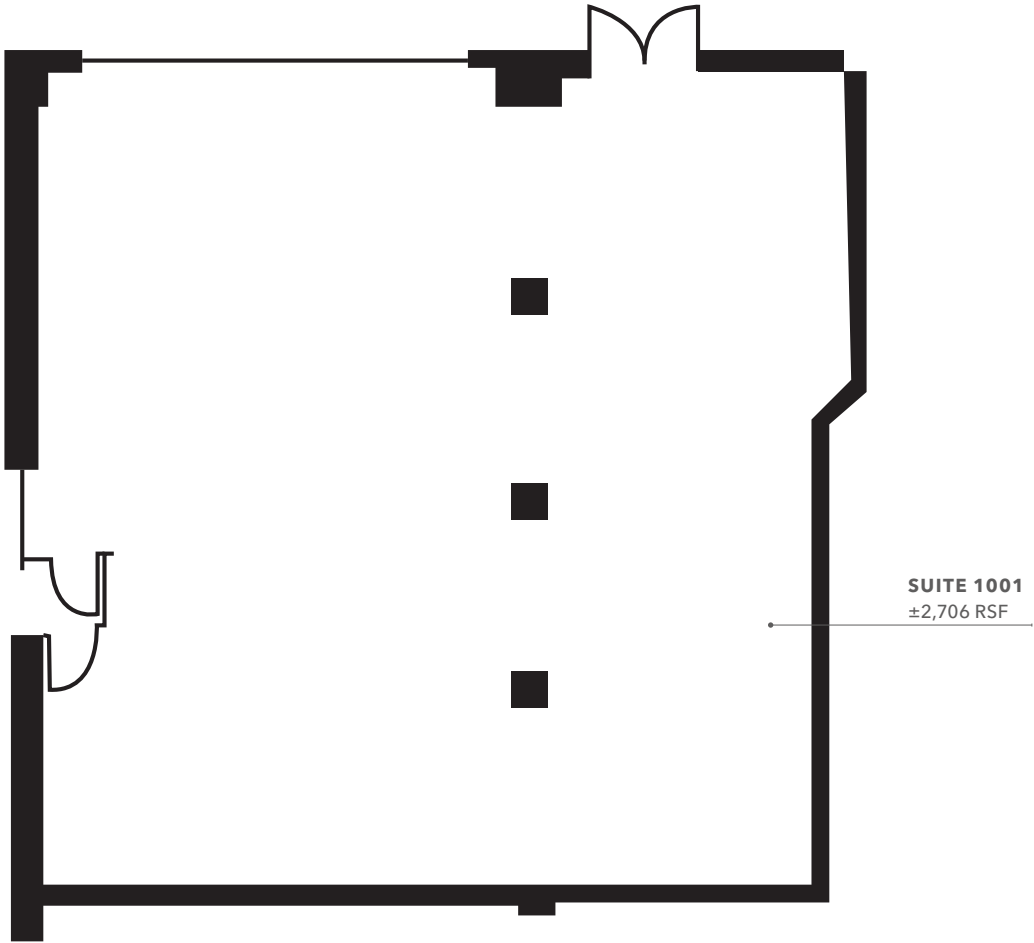


SUITE 410
±2,788 RSF

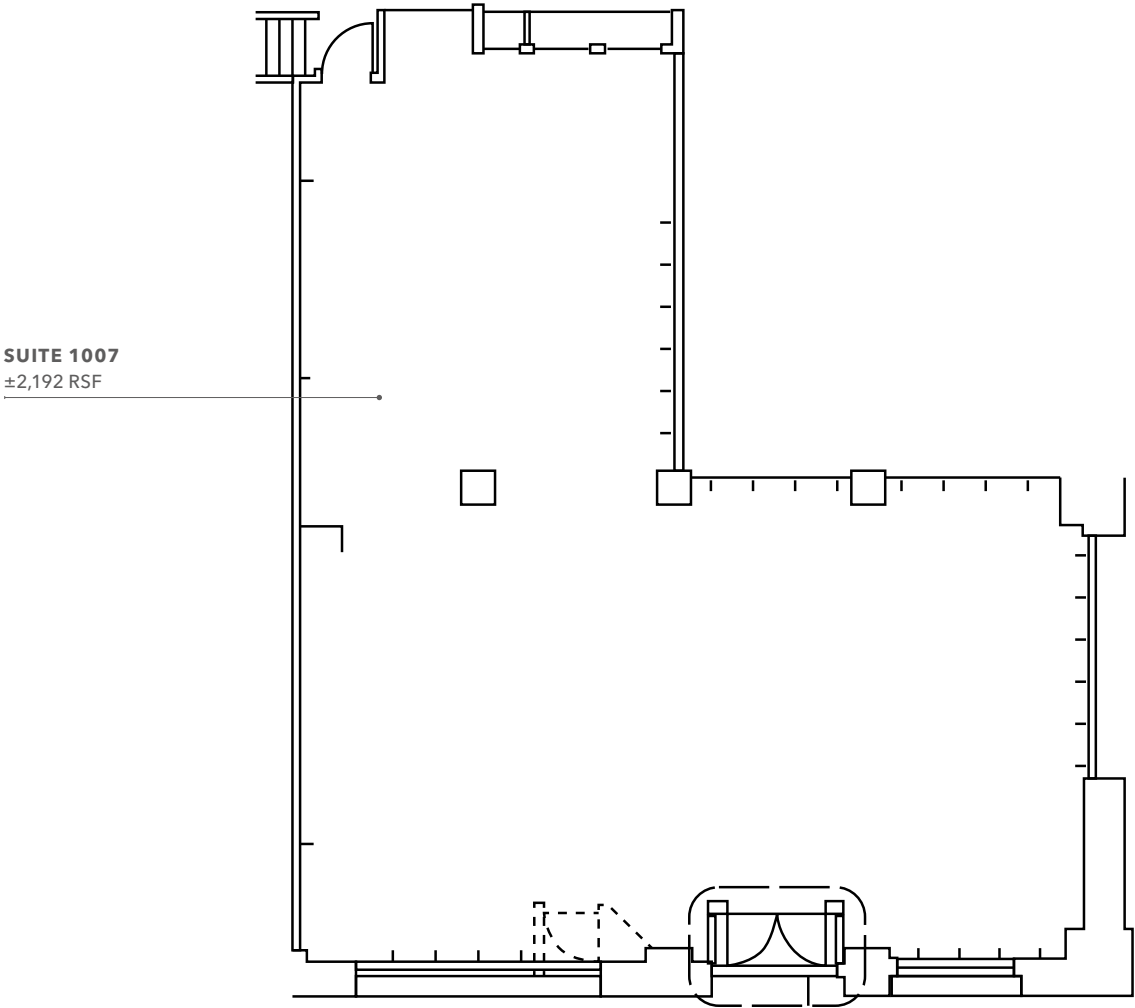
KIDDER.COM

This information supplied herein is from sources we deem reliable. It is provided without any representation, warranty, or guarantee, expressed or implied as to its accuracy. Prospective Buyer or Tenant should conduct an independent investigation and verification of all matters deemed to be material, including, but not limited to, statements of income and expenses. Consult your attorney, accountant, or other professional advisor. All Kidder Mathews designs are the sole property of Kidder Mathews. Branded materials and layouts are not authorized for use by any other firm or person.

SUITE 1001



SUITE 1007



KIDDER.COM

This information supplied herein is from sources we deem reliable. It is provided without any representation, warranty, or guarantee, expressed or implied as to its accuracy. Prospective Buyer or Tenant should conduct an independent investigation and verification of all matters deemed to be material, including, but not limited to, statements of income and expenses. Consult your attorney, accountant, or other professional advisor. All Kidder Mathews designs are the sole property of Kidder Mathews. Branded materials and layouts are not authorized for use by any other firm or person.

