



VIEW BELLEVUE PLACE  
FLY OVER VIDEO



BELLEVUE  
PLACE



Bellevue's Premier Office Location



Kemper  
Development  
Company

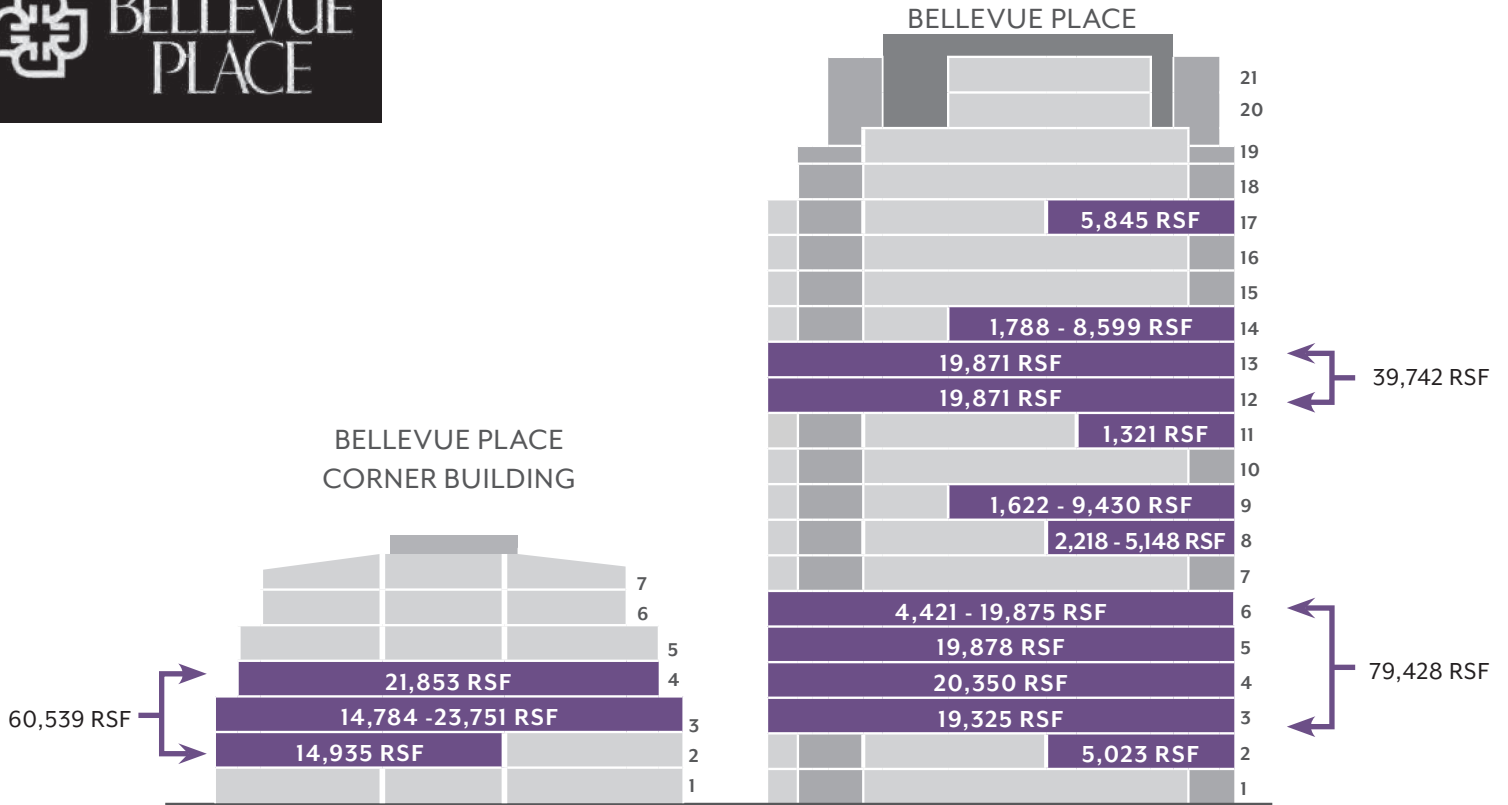


THE BELLEVUE  
COLLECTION™

**BRODERICK**  
• GROUP •



BELLEVUE PLACE



**BELLEVUE PLACE · BELLEVUE PLACE BUILDING: 10500 NE 8<sup>TH</sup> STREET**

FLOORPLAN	VIRTUAL TOUR	FLOOR	SUITE	SIZE	AVAILABLE
		17	1776	5,845 RSF	Now
		14	1405	1,788 RSF	Now
		14	1400	6,811 RSF	Now
		13	1300	19,871 RSF	July 1, 2026
		12	1200	19,871 RSF	July 1, 2026
		11	1140	1,321 RSF	Now
		9	960	7,808 RSF	Now
		9	930	1,622 RSF	Now
		8	830	2,930 RSF	Now
		8	825	2,218 RSF	Now
		6	625	4,421 RSF	December 1, 2027 (potentially sooner)
		6	600	7,511 – 15,457 RSF	Now
		5	500	19,878 RSF	Now
		4	400	20,350 RSF	Now
		3	301	3,385 RSF	Now
		3	300	15,940 RSF	Now
		2	214	5,023 RSF	Now

**BELLEVUE PLACE · CORNER BUILDING: 800 BELLEVUE WAY NE**

FLOORPLAN	VIRTUAL TOUR	FLOOR	SUITE	SIZE	AVAILABLE
		4	400	21,853 RSF	February 1, 2027
		3	300	14,784 – 23,751 RSF	Now (Remainder October 1, 2027)
		2	200	14,935 RSF	Now

Three contiguous floors available for options including 23,751, 29,719, 45,604, and 60,539 RSF



# Fact Sheet

Addresses:	Bellevue Place Building: 10500 NE 8th Street, Bellevue, WA 98004 Corner Building: 800 Bellevue Way NE, Bellevue, WA 98004	
Square Footage:	Bellevue Place	519,549 SF
	Lincoln Square North	554,391 SF
	Lincoln Square Westin Lincoln Square South	15,345 SF 719,573 SF
	Total:	1,808,858 SF
Stories:	Bellevue Place Building: 21 Corner Building: 6	
<b>Rental Rates:</b>	<b>\$52.00 – \$56.00 NNN per RSF</b>	
Operating Expenses:	2026 Projected Operating Expenses: \$19.19 per RSF	
Load Factors:	Per 2010 BOMA standards, varies by floor	
Parking:	Three (3) stalls for every 1,000 square feet of usable area at current rate of \$261.01 per month, plus tax	
Athletic Club:	Approximately 12,000 RSF with latest equipment, full swimming pool, lockers, showers, managed by Hyatt Regency Stay-Fit	
Access:	<p>Access into the parking garage at four points:</p> <ul style="list-style-type: none"> <li>• NE 8<sup>th</sup> Street</li> <li>• Bellevue Way NE</li> <li>• 106<sup>th</sup> Street</li> <li>• NE 10<sup>th</sup> Street</li> </ul>	Additional access via motor court. Speed ramp directly to third level garage via NE 10 <sup>th</sup> Street.
Restaurants & Retail:	<p>13 Coins, Daniel's Broiler, Eques, Fonte's Coffee, Joey Restaurant in addition to 75,000 square feet of retail, including Wintergarden lunch restaurants, clothing and home furnishings.</p> <p>Bellevue Square restaurants include Cactus, The Cheesecake Factory, Pagliacci Pizza, Starbucks &amp; Tavern Hall.</p> <p>Lincoln Square restaurants include Cantina Monarca, Din Tai Fung, Drip Tea, Duke's, Earl's Kitchen &amp; Bar, Fogo de Chao, King Leroy, Legion Sports Bar, Wagyu House - Coming Soon, Water Grill, West Coast Tacos, Woods Coffee and great retail for team events including Forum Social House and Lucky Strike</p>	
Hotel/Conference Facilities:	The Hyatt Regency Hotel furnishes 732 guest rooms, two (2) grand ballrooms, sloped auditorium, and nine (9) conference rooms that can accommodate meetings from 5 to 900 people. The Westin Hotel and W Hotel (Lincoln Square) can be accessed by skybridge as well.	
Fiber Optics/ Telecommunications:	<p>Five providers in the project currently provide fiber:</p> <ul style="list-style-type: none"> <li>• Astound</li> <li>• Cogent</li> <li>• Comcast</li> <li>• Lumen</li> <li>• Zayo</li> </ul>	
Security System:	Programmable computer controlled card access security system, 24-hour radio-equipped security force with closed circuit TV surveillance of all public areas.	
HVAC:	Chilled water, variable air volume system with constant outside air volume for excellent interior air quality. Winner of Washington State Department of Energy "Energy Edge Award". Zone capacity averages 1 zone per 800 square feet.	
Building Construction:	The Bellevue Place Building at Bellevue Place is a concrete framed Type I Construction office building. The floor slabs are reinforced concrete and the structural frame consists of concrete columns and post-tensioned concrete beams. The exterior is clad in panelized brick and glass windows. The base of the building has precast concrete accent banding and the columns are clad with a granite wainscoting.	
Elevators:	Bellevue Place Building: Four high-speed elevators serving floors 1 – 12, four serving floors 13 – 21. One freight elevator. Access to parking garage via four elevators in the Wintergarden.	
Management Ownership:	Locally owned and managed by Kemper Development Company – on site, Suite 215	
Leasing:	Broderick Group, Inc. – On site for convenient tours Bellevue Place Building, Suite 900 425.646.3444	Paul Sweeney   425.646.5225   <a href="mailto:sweeney@broderickgroup.com">sweeney@broderickgroup.com</a> Jim Kinerk   425.646.5221   <a href="mailto:kinerk@broderickgroup.com">kinerk@broderickgroup.com</a> Clayton Holm   425.274.4287   <a href="mailto:holm@broderickgroup.com">holm@broderickgroup.com</a>

# BELLEVUE PLACE

BELLEVUE PLACE BUILDING  
 10500 NE 8<sup>th</sup> Street  
 Bellevue, WA

## LOCATION MAP



### BRODERICK GROUP

For more information or to schedule a tour, please contact:

PAUL SWEENEY  
 425.646.5225  
[sweeney@broderickgroup.com](mailto:sweeney@broderickgroup.com)

JIM KINERK  
 425.646.5221  
[kinerk@broderickgroup.com](mailto:kinerk@broderickgroup.com)

CLAYTON HOLM  
 425.274.4287  
[holm@broderickgroup.com](mailto:holm@broderickgroup.com)

The information contained herein has been given to us by the owner or sources which we deem reliable. We have no reason to doubt its accuracy, but we do not guarantee it. Prospective tenants should carefully verify all information contained herein.



BELLEVUE PLACE BUILDING  
10500 NE 8<sup>th</sup> Street  
Bellevue, WA

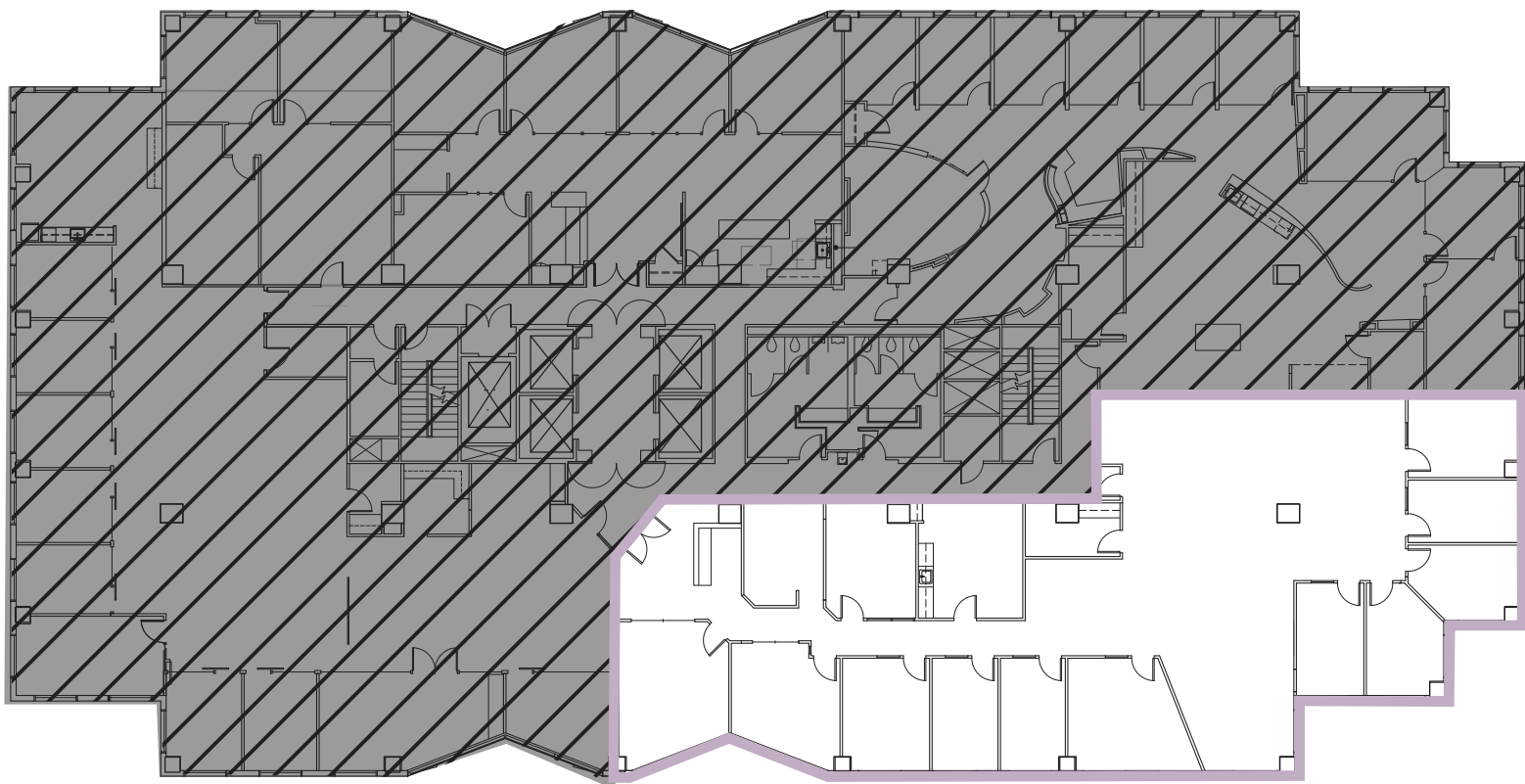
# BELLEVUE PLACE BUILDING

17<sup>th</sup> Floor • Suite 1776 • 5,845 RSF

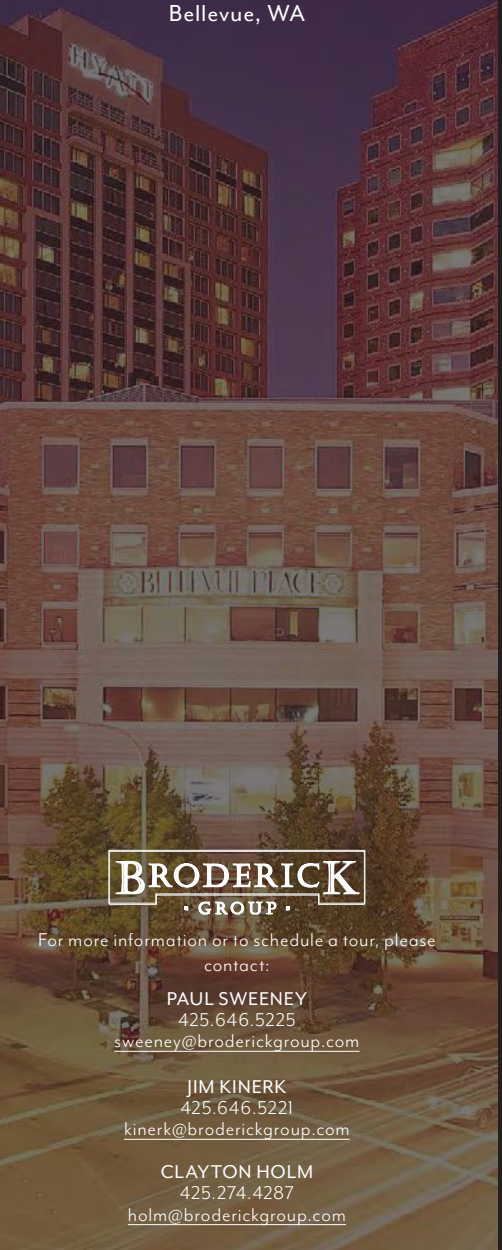


## SPACE FEATURES

- Available Now
- Double glass herculite entry
- Balance of private offices, conference rooms and open work area
- Kitchenette
- West views of Lake Washington, Seattle and Olympic Mountains



NORTH



For more information or to schedule a tour, please contact:

PAUL SWEENEY  
425.646.5225  
sweeney@broderickgroup.com

JIM KINERK  
425.646.5221  
kinerk@broderickgroup.com

CLAYTON HOLM  
425.274.4287  
holm@broderickgroup.com

The information contained herein has been given to us by the owner or sources which we deem reliable. We have no reason to doubt its accuracy, but we do not guarantee it. Prospective tenants should carefully verify all information contained herein.



BELLEVUE PLACE BUILDING  
10500 NE 8<sup>th</sup> Street  
Bellevue, WA

# BELLEVUE PLACE BUILDING

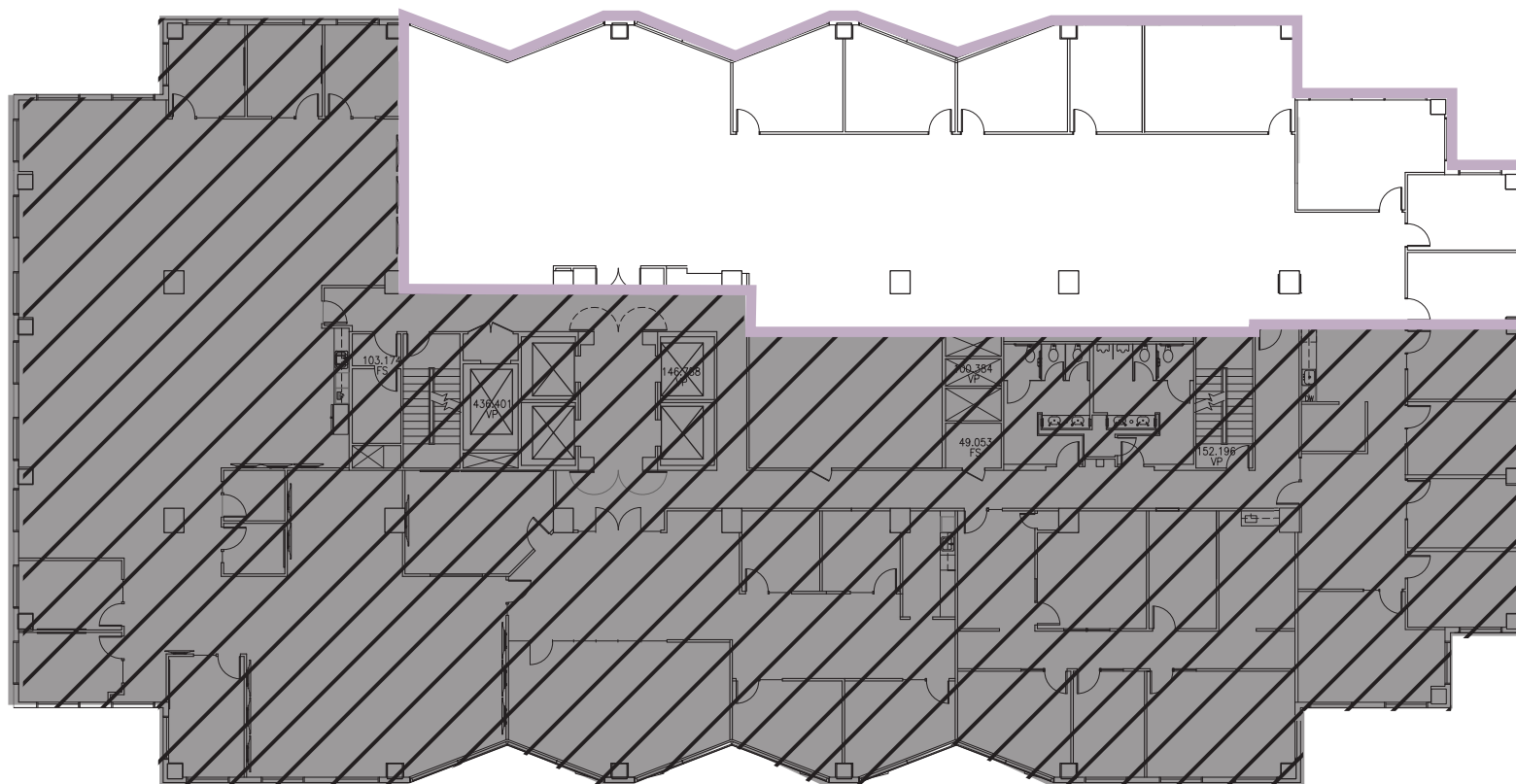
14<sup>th</sup> Floor • Suite 1400 • 6,811 RSF



CLICK TO TAKE A  
VIRTUAL TOUR

## SPACE FEATURES

- Available Now
- Direct elevator lobby exposure
- Double glass door entry
- 8 Private offices
- Open area for workstations
- East facing with Bellevue CBD skyline views
- **Ability to combine with Suite 1405 for a total of 8,599 RSF**



↑ BACK TO AVAILABLE SPACE



NORTH



For more information or to schedule a tour, please contact:

PAUL SWEENEY  
425.646.5225

[sweeney@broderickgroup.com](mailto:sweeney@broderickgroup.com)

JIM KINERK  
425.646.5221  
[kinerk@broderickgroup.com](mailto:kinerk@broderickgroup.com)

CLAYTON HOLM  
425.274.4287  
[holm@broderickgroup.com](mailto:holm@broderickgroup.com)

The information contained herein has been given to us by the owner or sources which we deem reliable. We have no reason to doubt its accuracy, but we do not guarantee it. Prospective tenants should carefully verify all information contained herein.



BELLEVUE PLACE BUILDING  
10500 NE 8<sup>th</sup> Street  
Bellevue, WA

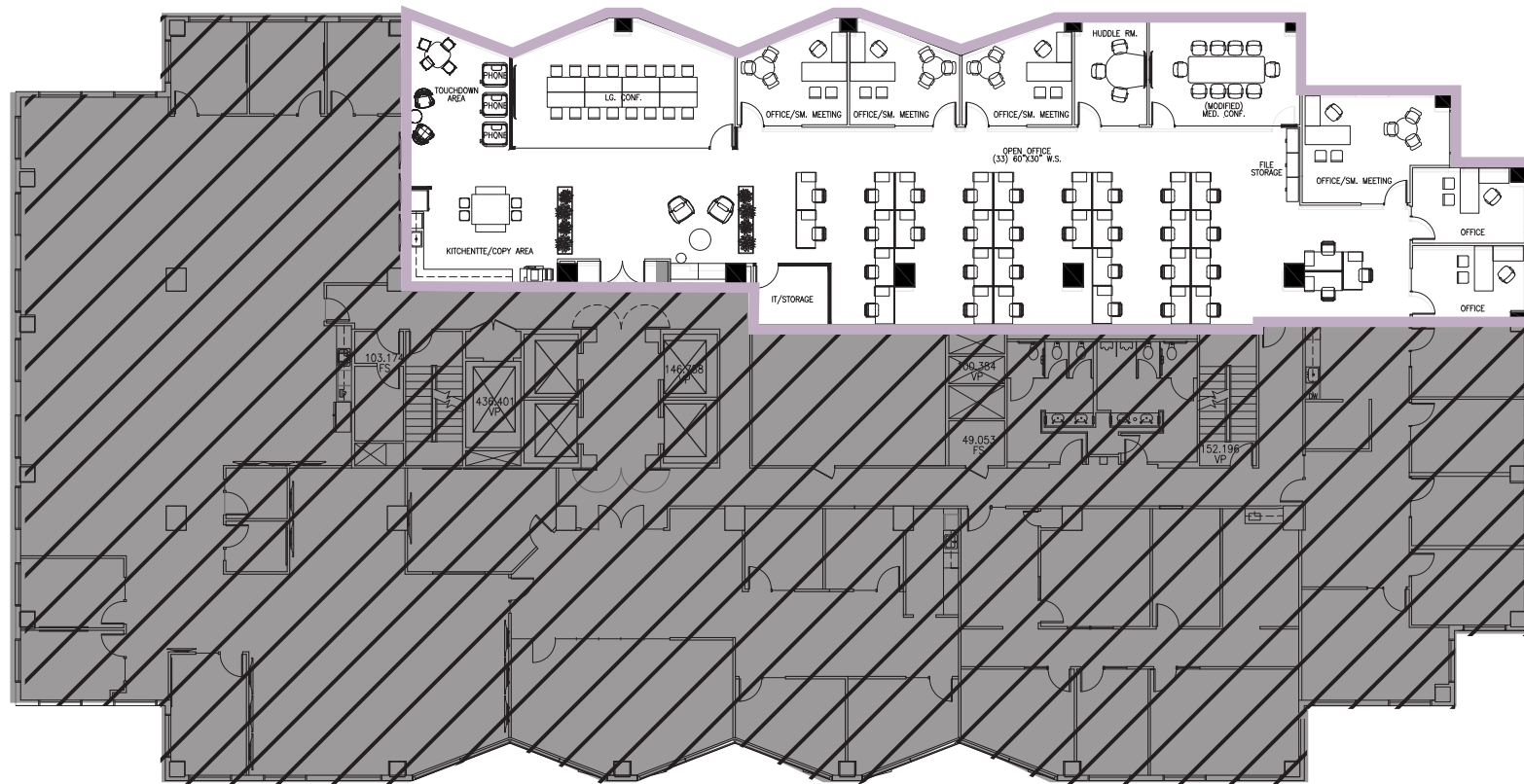
# BELLEVUE PLACE BUILDING

14<sup>th</sup> Floor • Suite 1400 SAMPLE TEST FIT • 6,811 RSF



## SPACE FEATURES

- Available Now
- 7 office / small meeting rooms
- 1 large conference room
- 1 medium conference room
- 33 Workstations
- Open concept break area
- Touchdown area with room for phone booths



For more information or to schedule a tour, please contact:

PAUL SWEENEY  
425.646.5225

[sweeney@broderickgroup.com](mailto:sweeney@broderickgroup.com)

JIM KINERK  
425.646.5221  
[kinerk@broderickgroup.com](mailto:kinerk@broderickgroup.com)

CLAYTON HOLM  
425.274.4287  
[holm@broderickgroup.com](mailto:holm@broderickgroup.com)

The information contained herein has been given to us by the owner or sources which we deem reliable. We have no reason to doubt its accuracy, but we do not guarantee it. Prospective tenants should carefully verify all information contained herein.



NORTH



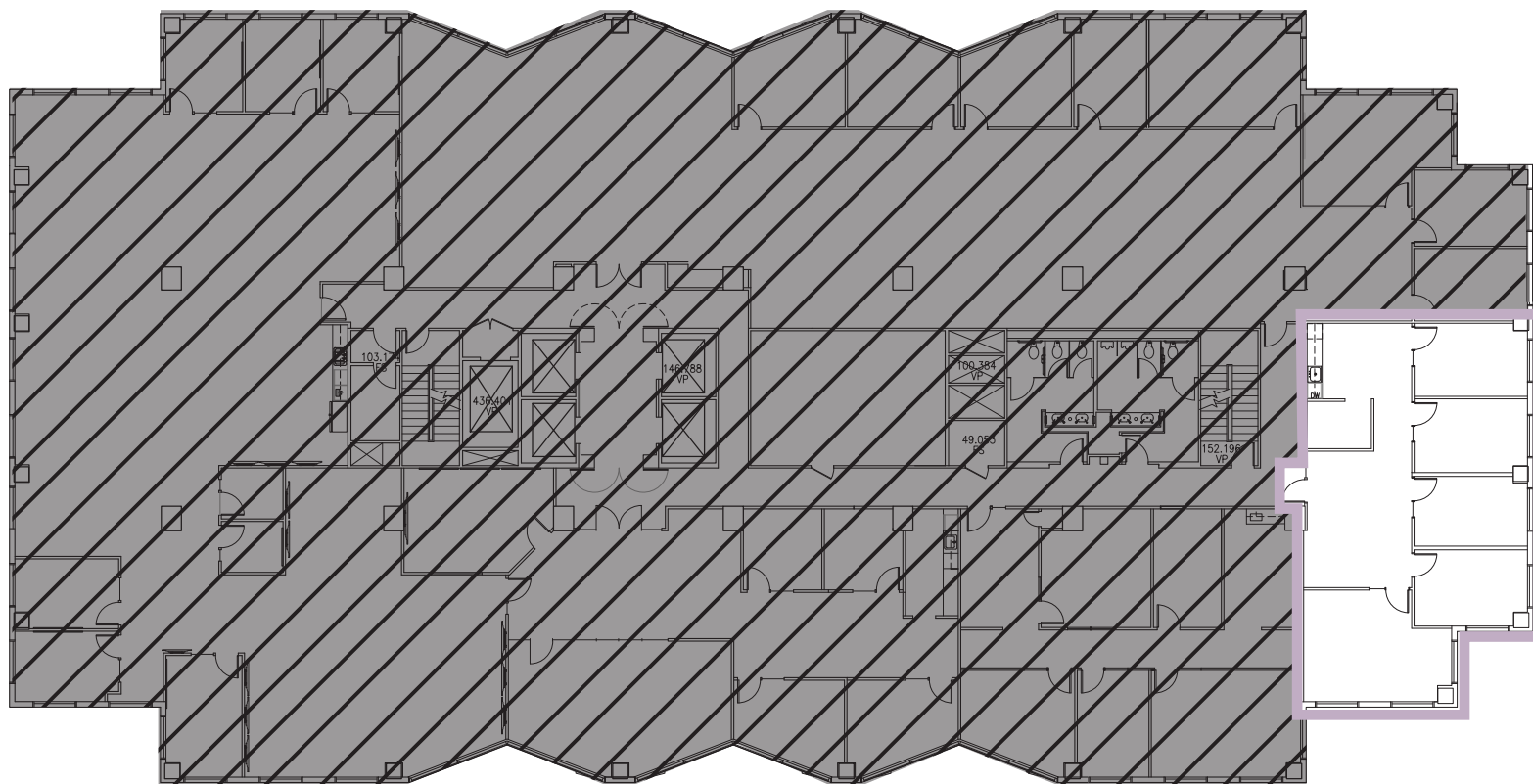
BELLEVUE PLACE BUILDING  
 10500 NE 8<sup>th</sup> Street  
 Bellevue, WA

# BELLEVUE PLACE BUILDING

14<sup>th</sup> Floor • **Suite 1405** • 1,788 RSF

## SPACE FEATURES

- Available Now
- 4 exterior private offices
- 1 conference room
- Break room
- **Ability to combine with Suite 1400 for a total of 8,599 RSF**



↑ **BACK TO AVAILABLE SPACE**



NORTH



For more information or to schedule a tour, please contact:

PAUL SWEENEY  
 425.646.5225

[sweeney@broderickgroup.com](mailto:sweeney@broderickgroup.com)

JIM KINERK  
 425.646.5221  
[kinerk@broderickgroup.com](mailto:kinerk@broderickgroup.com)

CLAYTON HOLM  
 425.274.4287  
[holm@broderickgroup.com](mailto:holm@broderickgroup.com)

The information contained herein has been given to us by the owner or sources which we deem reliable. We have no reason to doubt its accuracy, but we do not guarantee it. Prospective tenants should carefully verify all information contained herein.



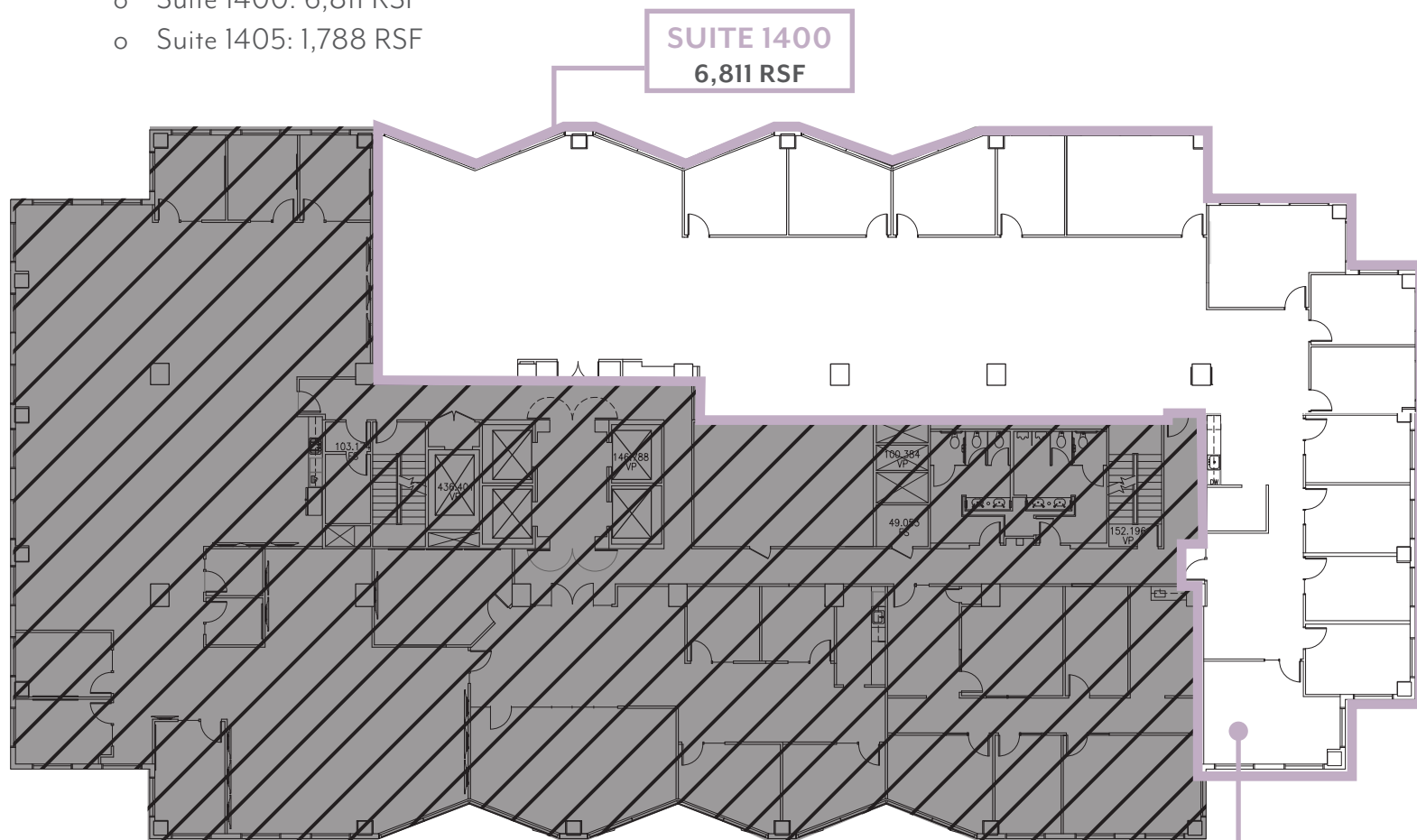
BELLEVUE PLACE BUILDING  
10500 NE 8<sup>th</sup> Street  
Bellevue, WA

# BELLEVUE PLACE BUILDING

14<sup>th</sup> Floor • Suites 1400 & 1405 • 8,599 RSF

## SPACE FEATURES

- Available Now
- Currently two separate suites that combine for a total of 8,599 RSF
  - Suite 1400: 6,811 RSF
  - Suite 1405: 1,788 RSF
- 13 private offices
- Eastern, Southern and Western Views



↑ BACK TO AVAILABLE SPACE



NORTH



For more information or to schedule a tour, please contact:

PAUL SWEENEY  
425.646.5225

[sweeney@broderickgroup.com](mailto:sweeney@broderickgroup.com)

JIM KINERK  
425.646.5221  
[kinerk@broderickgroup.com](mailto:kinerk@broderickgroup.com)

CLAYTON HOLM  
425.274.4287  
[holm@broderickgroup.com](mailto:holm@broderickgroup.com)

The information contained herein has been given to us by the owner or sources which we deem reliable. We have no reason to doubt its accuracy, but we do not guarantee it. Prospective tenants should carefully verify all information contained herein.



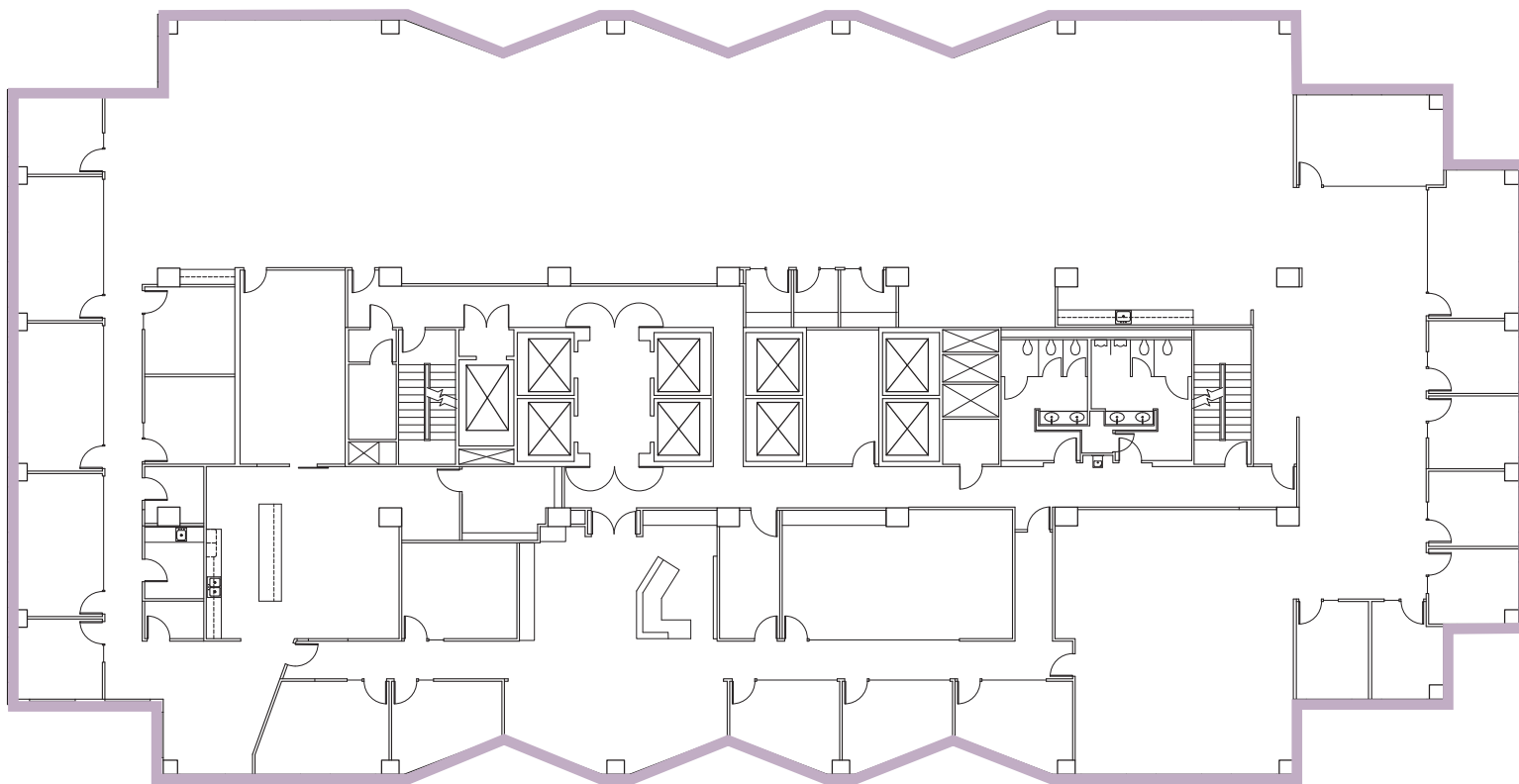
BELLEVUE PLACE BUILDING  
 10500 NE 8<sup>th</sup> Street  
 Bellevue, WA

# BELLEVUE PLACE BUILDING

13<sup>th</sup> Floor • Suite 1300 • 19,871 RSF

## SPACE FEATURES

- Available July 1, 2026
- Former Smartsheet main reception floor
- Balance of workstations, meeting rooms, and private offices
- Open plenum ceiling in most areas
- Aluminum frame finishes
- Great views of Lake Washington, Seattle, and Olympic Mountains



↑ BACK TO AVAILABLE SPACE



NORTH



For more information or to schedule a tour, please contact:

PAUL SWEENEY  
 425.646.5225  
[sweeney@broderickgroup.com](mailto:sweeney@broderickgroup.com)

JIM KINERK  
 425.646.5221  
[kinerk@broderickgroup.com](mailto:kinerk@broderickgroup.com)

CLAYTON HOLM  
 425.274.4287  
[holm@broderickgroup.com](mailto:holm@broderickgroup.com)

The information contained herein has been given to us by the owner or sources which we deem reliable. We have no reason to doubt its accuracy, but we do not guarantee it. Prospective tenants should carefully verify all information contained herein.



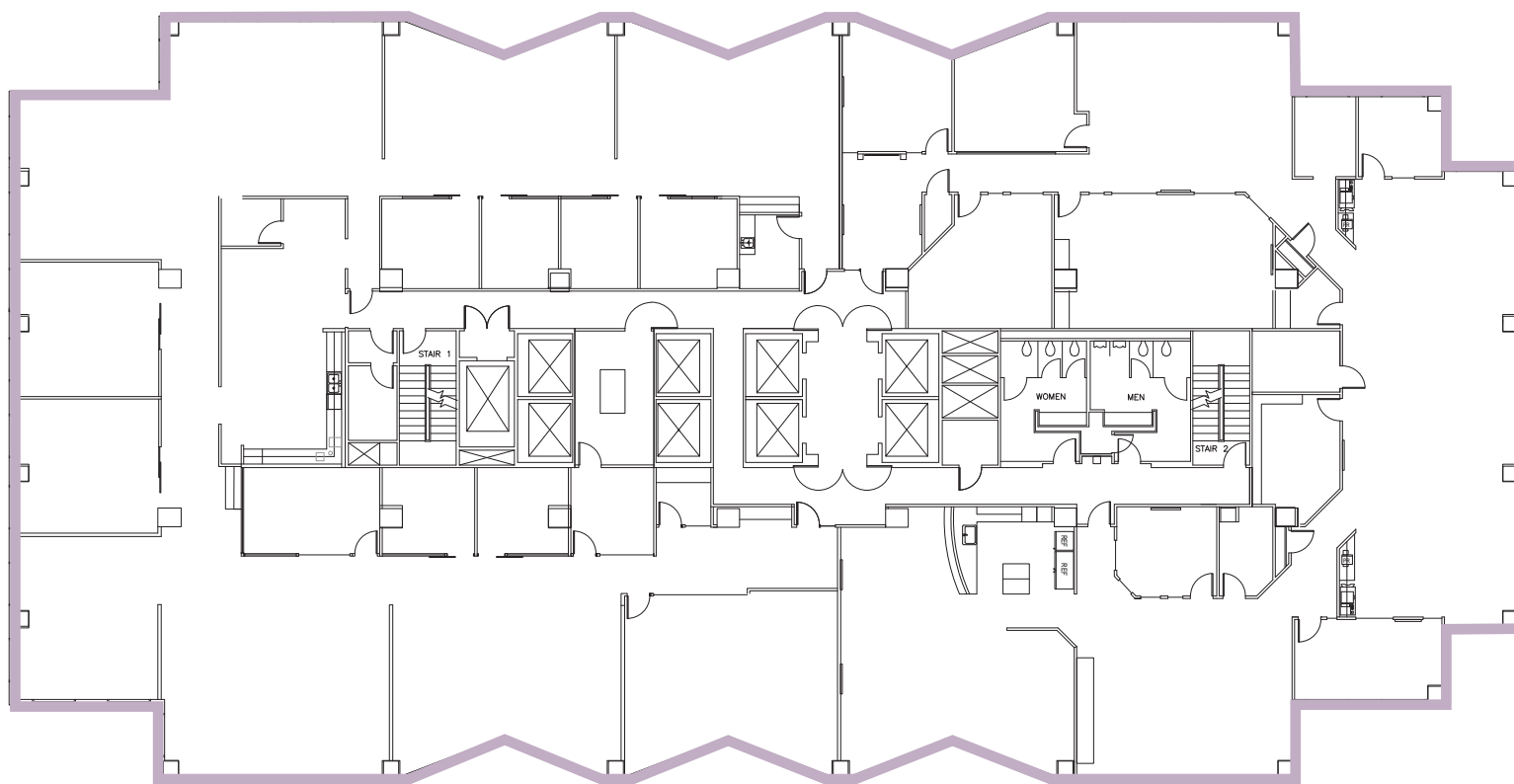
BELLEVUE PLACE BUILDING  
10500 NE 8<sup>th</sup> Street  
Bellevue, WA

## BELLEVUE PLACE BUILDING

12<sup>th</sup> Floor • Suite 1200 • 19,987 RSF

### SPACE FEATURES

- Available July 1, 2026
- Former Smartsheet
- Balance of workstations, meeting rooms, and private offices
- Open plenum ceiling in most areas
- Aluminum frame finishes
- Great views of Lake Washington, Seattle, and Olympic Mountains



↑ BACK TO AVAILABLE SPACE



NORTH

**BRODERICK**  
GROUP

For more information or to schedule a tour, please contact:

PAUL SWEENEY  
425.646.5225  
[sweeney@broderickgroup.com](mailto:sweeney@broderickgroup.com)

JIM KINERK  
425.646.5221  
[kinerk@broderickgroup.com](mailto:kinerk@broderickgroup.com)

CLAYTON HOLM  
425.274.4287  
[holm@broderickgroup.com](mailto:holm@broderickgroup.com)

The information contained herein has been given to us by the owner or sources which we deem reliable. We have no reason to doubt its accuracy, but we do not guarantee it. Prospective tenants should carefully verify all information contained herein.



BELLEVUE PLACE BUILDING  
10500 NE 8<sup>th</sup> Street  
Bellevue, WA

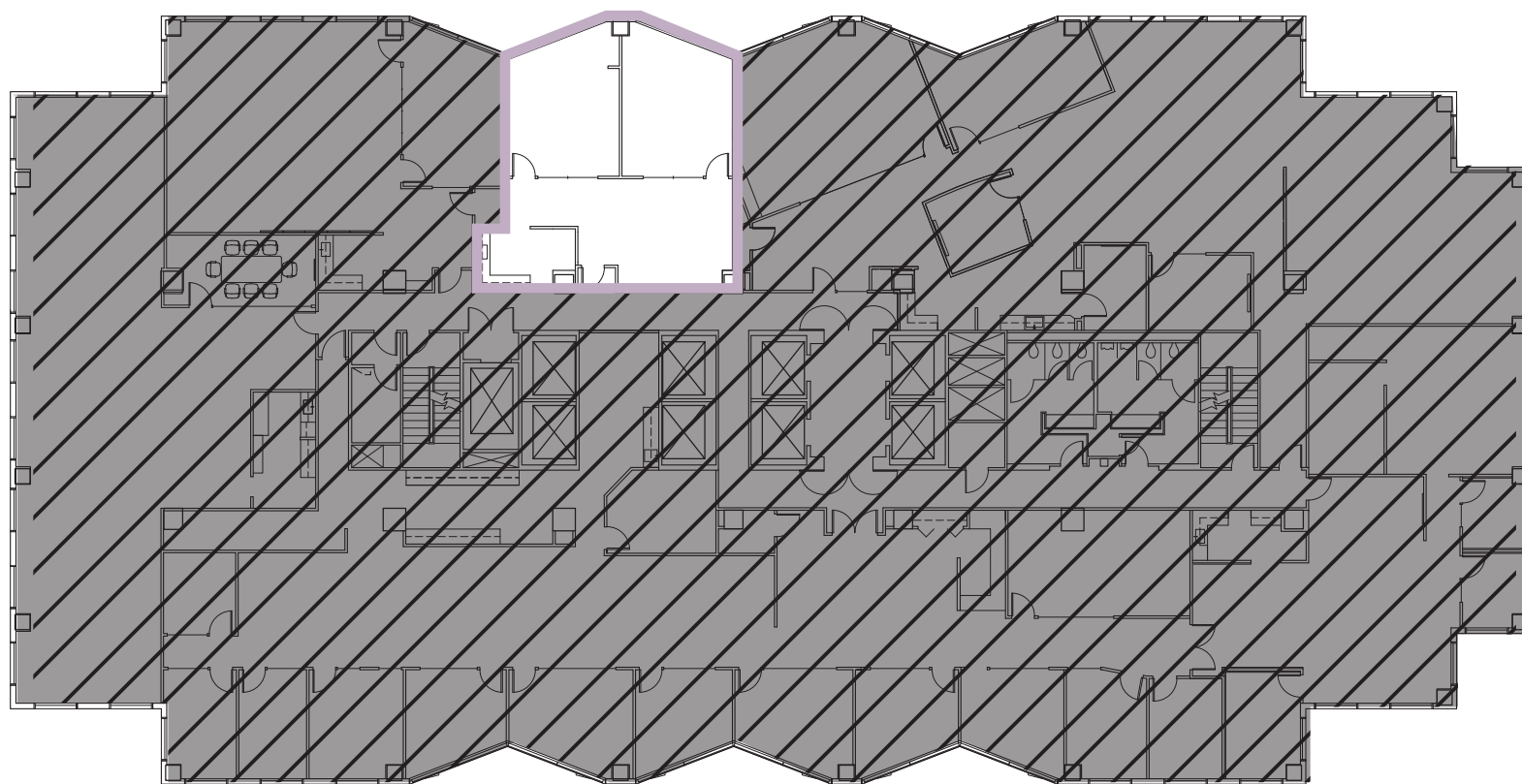
# BELLEVUE PLACE BUILDING

11<sup>th</sup> Floor • Suite 1140 • 1,321 RSF



## SPACE FEATURES

- Available Now
- Direct elevator lobby exposure
- Two large private offices
- Open area
- East facing with Bellevue CBD skyline views



NORTH



For more information or to schedule a tour, please contact:

PAUL SWEENEY  
425.646.5225

[sweeney@broderickgroup.com](mailto:sweeney@broderickgroup.com)

JIM KINERK  
425.646.5221  
[kinerk@broderickgroup.com](mailto:kinerk@broderickgroup.com)

CLAYTON HOLM  
425.274.4287  
[holm@broderickgroup.com](mailto:holm@broderickgroup.com)

The information contained herein has been given to us by the owner or sources which we deem reliable. We have no reason to doubt its accuracy, but we do not guarantee it. Prospective tenants should carefully verify all information contained herein.



BELLEVUE PLACE BUILDING  
10500 NE 8<sup>th</sup> Street  
Bellevue, WA

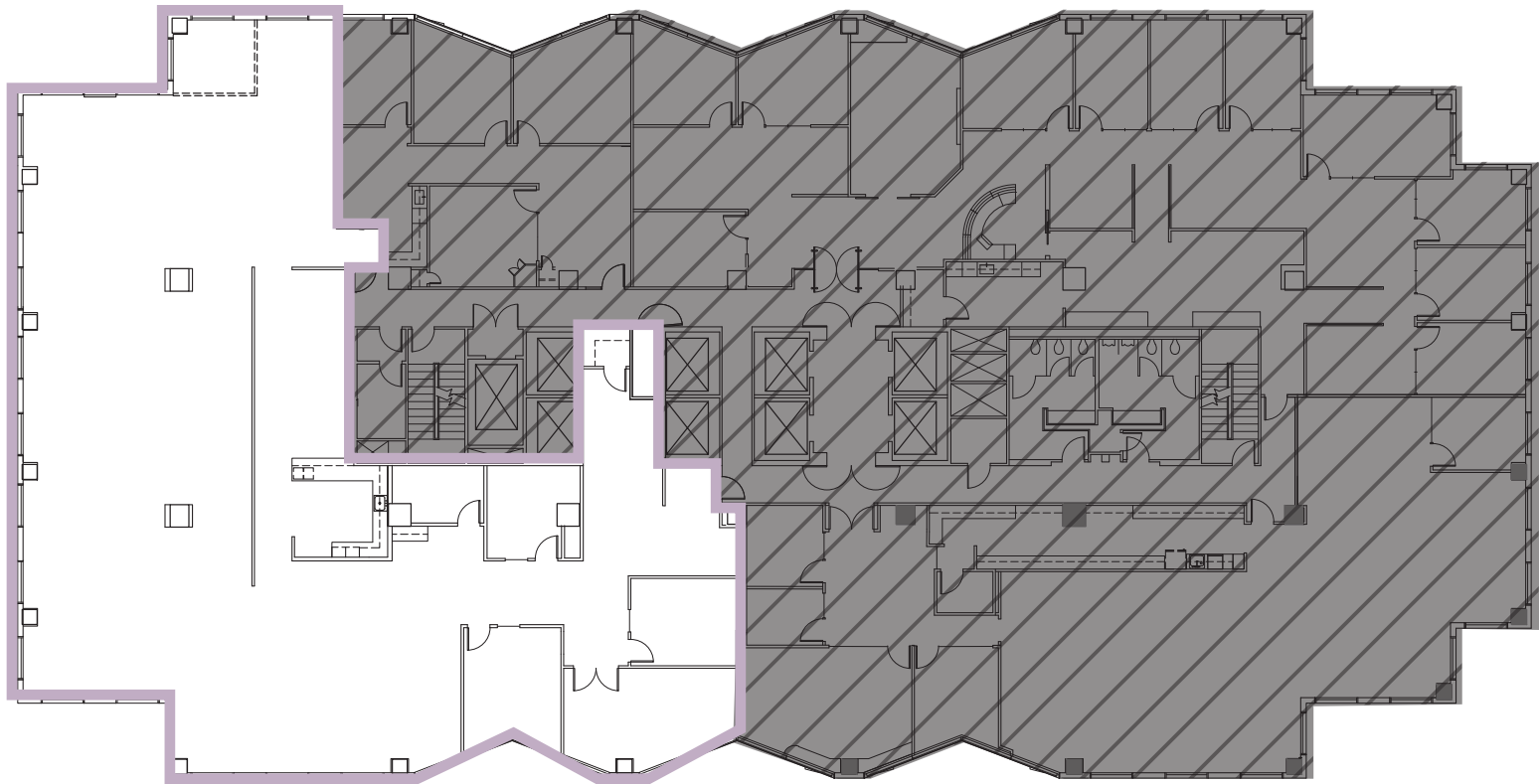
# BELLEVUE PLACE BUILDING

9<sup>th</sup> Floor • Suite 960 • 7,808 RSF



## SPACE FEATURES

- Available Now
- Recently renovated elevator lobby and common areas
- Open layout for workstations
- Large break area
- Reception entry with conference rooms at the front of the space
- **Ability to combine with Suite 930 for 9,430 RSF**



↑ BACK TO AVAILABLE SPACE



NORTH



For more information or to schedule a tour, please contact:

PAUL SWEENEY  
425.646.5225  
sweeney@broderickgroup.com

JIM KINERK  
425.646.5221  
kinerk@broderickgroup.com

CLAYTON HOLM  
425.274.4287  
holm@broderickgroup.com

The information contained herein has been given to us by the owner or sources which we deem reliable. We have no reason to doubt its accuracy, but we do not guarantee it. Prospective tenants should carefully verify all information contained herein.



BELLEVUE PLACE BUILDING  
10500 NE 8<sup>th</sup> Street  
Bellevue, WA

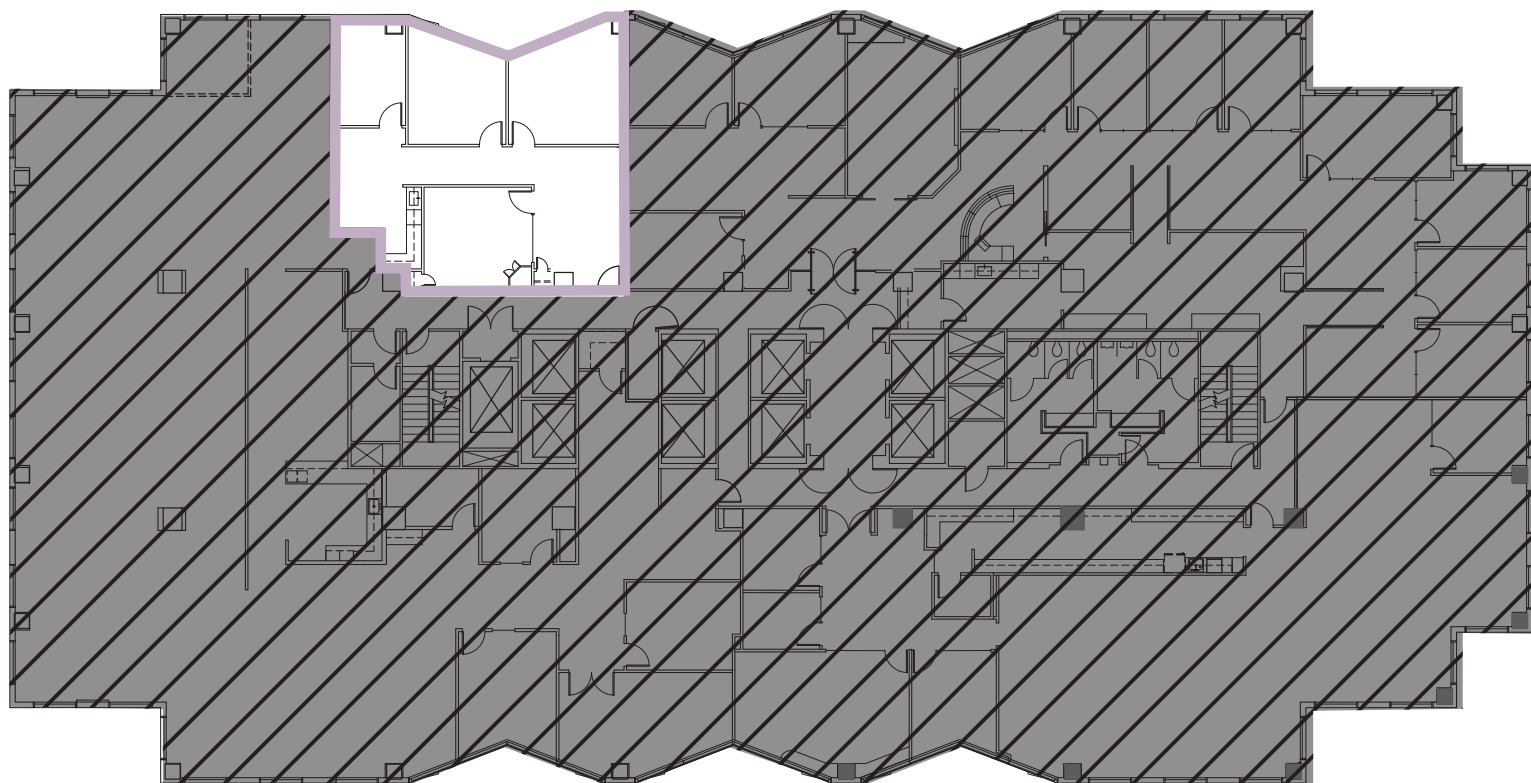
# BELLEVUE PLACE BUILDING

9<sup>th</sup> Floor • Suite 930 • 1,622 RSF



## SPACE FEATURES

- Available Now
- Three private offices
- Efficient break area with kitchenette
- Interior conference room
- **Ability to combine with Suite 960 for 9,430 RSF**



NORTH



For more information or to schedule a tour, please contact:

PAUL SWEENEY  
425.646.5225

[sweeney@broderickgroup.com](mailto:sweeney@broderickgroup.com)

JIM KINERK  
425.646.5221  
[kinerk@broderickgroup.com](mailto:kinerk@broderickgroup.com)

CLAYTON HOLM  
425.274.4287  
[holm@broderickgroup.com](mailto:holm@broderickgroup.com)

The information contained herein has been given to us by the owner or sources which we deem reliable. We have no reason to doubt its accuracy, but we do not guarantee it. Prospective tenants should carefully verify all information contained herein.



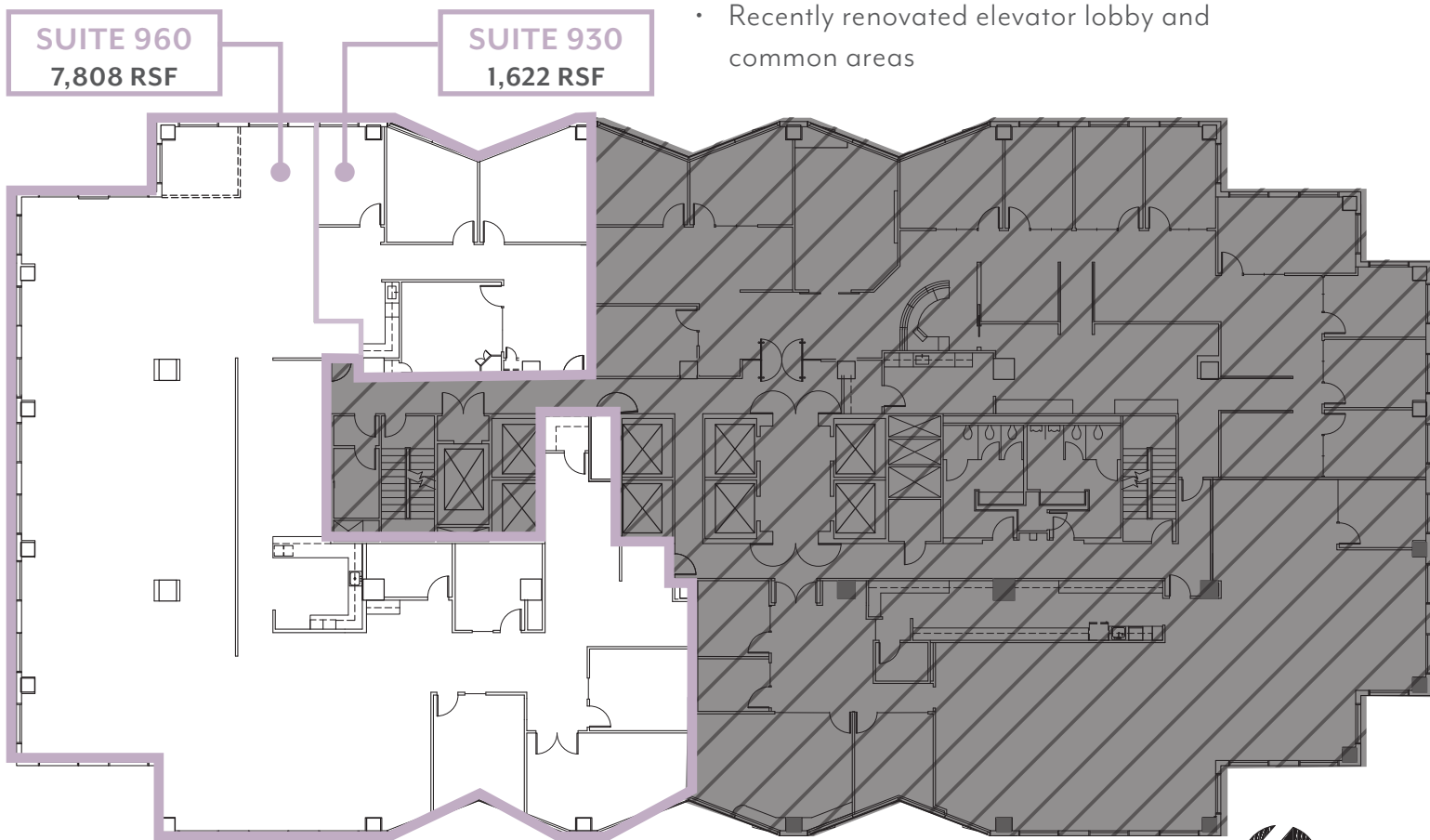
BELLEVUE PLACE BUILDING  
10500 NE 8<sup>th</sup> Street  
Bellevue, WA

# BELLEVUE PLACE BUILDING

9<sup>th</sup> Floor • Suite 930 & 960 • 9,430 RSF

## SPACE FEATURES

- Available Now
- Currently two separate suites that combine for a total of 9,430 RSF
  - Suite 930: 1,622 RSF
  - Suite 960: 7,808 RSF
- Reception entry with conference rooms at the front of the space
- Open layout work stations
- 3 private offices
- Large break areas
- Recently renovated elevator lobby and common areas



↑ BACK TO AVAILABLE SPACE



NORTH



For more information or to schedule a tour, please contact:

PAUL SWEENEY  
425.646.5225  
[sweeney@broderickgroup.com](mailto:sweeney@broderickgroup.com)

JIM KINERK  
425.646.5221  
[kinerk@broderickgroup.com](mailto:kinerk@broderickgroup.com)

CLAYTON HOLM  
425.274.4287  
[holm@broderickgroup.com](mailto:holm@broderickgroup.com)

The information contained herein has been given to us by the owner or sources which we deem reliable. We have no reason to doubt its accuracy, but we do not guarantee it. Prospective tenants should carefully verify all information contained herein.



BELLEVUE PLACE BUILDING  
10500 NE 8<sup>th</sup> Street  
Bellevue, WA

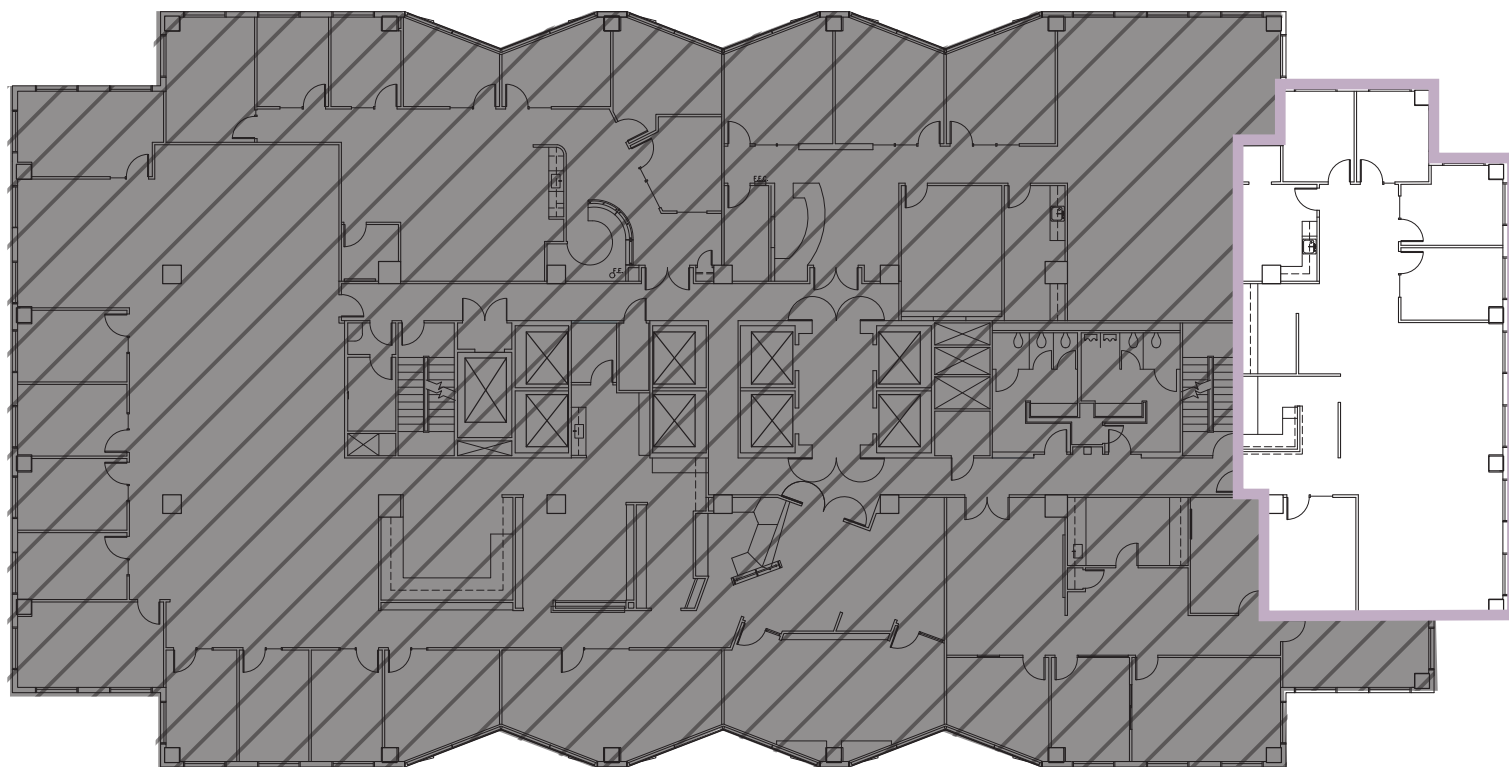
# BELLEVUE PLACE BUILDING

8<sup>th</sup> Floor • Suite 830 • 2,930 RSF



## SPACE FEATURES

- Available Now
- Four private offices
- One conference rooms
- Open workstation area
- Kitchenette
- Reception entry
- South, West and Eastern views
- **Ability to combine Suites 825 & 830 for 5,148 RSF**



For more information or to schedule a tour, please contact:

PAUL SWEENEY  
425.646.5225  
sweeney@broderickgroup.com

JIM KINERK  
425.646.5221  
kinerk@broderickgroup.com

CLAYTON HOLM  
425.274.4287  
holm@broderickgroup.com

The information contained herein has been given to us by the owner or sources which we deem reliable. We have no reason to doubt its accuracy, but we do not guarantee it. Prospective tenants should carefully verify all information contained herein.



NORTH



BELLEVUE PLACE BUILDING  
10500 NE 8<sup>th</sup> Street  
Bellevue, WA

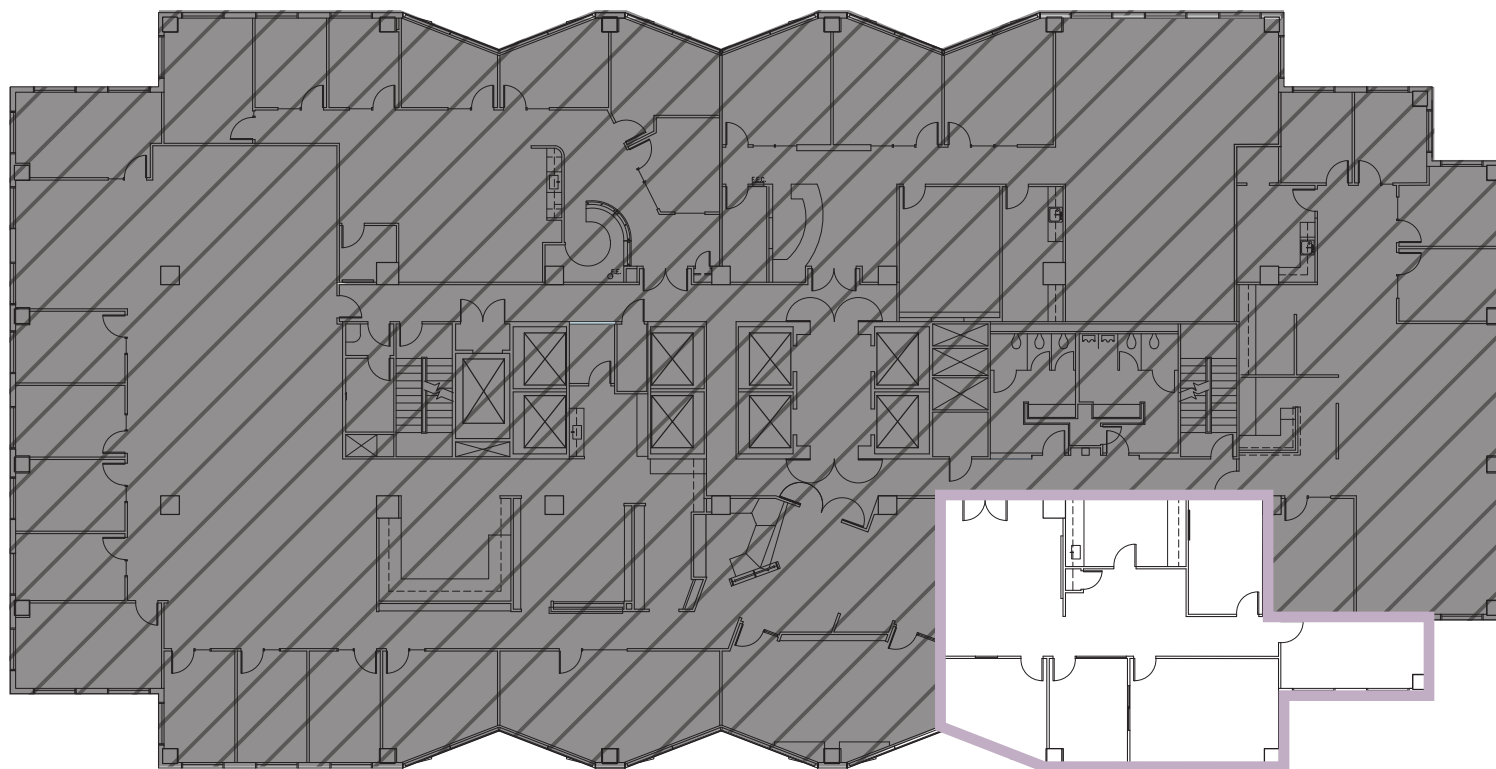
# BELLEVUE PLACE BUILDING

8<sup>th</sup> Floor • Suite 825 • 2,218 RSF



## SPACE FEATURES

- Available Now
- Three private offices
- Two Conference rooms
- Kitchenette
- Western views
- **Ability to combine Suites 825 & 830 for 5,148 RSF**



[↑ BACK TO AVAILABLE SPACE](#)



NORTH



For more information or to schedule a tour, please contact:

PAUL SWEENEY  
425.646.5225  
[sweeney@broderickgroup.com](mailto:sweeney@broderickgroup.com)

JIM KINERK  
425.646.5221  
[kinerk@broderickgroup.com](mailto:kinerk@broderickgroup.com)

CLAYTON HOLM  
425.274.4287  
[holm@broderickgroup.com](mailto:holm@broderickgroup.com)

The information contained herein has been given to us by the owner or sources which we deem reliable. We have no reason to doubt its accuracy, but we do not guarantee it. Prospective tenants should carefully verify all information contained herein.



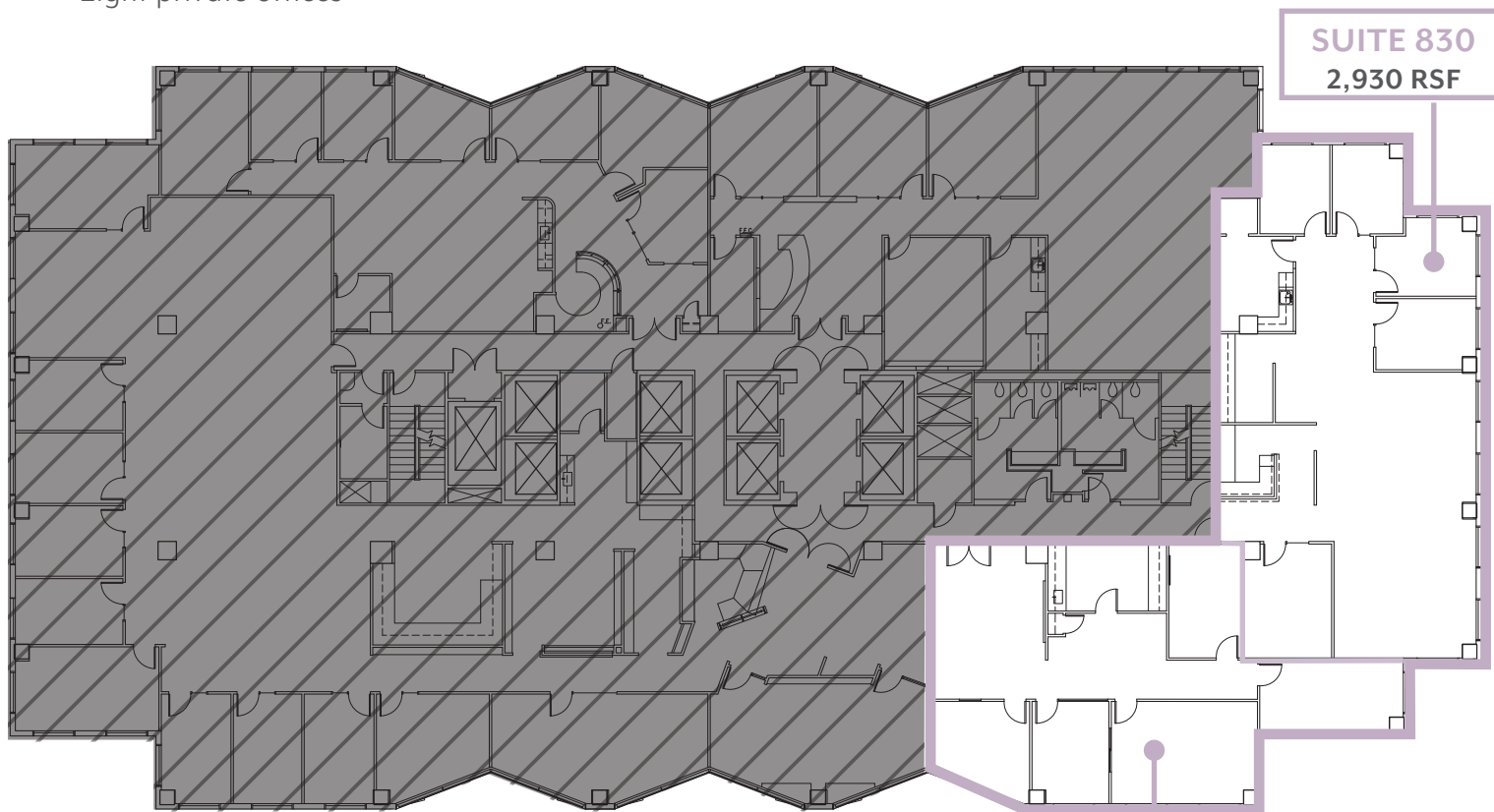
BELLEVUE PLACE BUILDING  
10500 NE 8<sup>th</sup> Street  
Bellevue, WA

# BELLEVUE PLACE BUILDING

8<sup>th</sup> Floor • Suite 825 & 830 • 5,148 RSF

## SPACE FEATURES

- Available Now
- Currently two separate suites that combine for a total of 5,148 RSF
  - Suite 825: 2,218 RSF
  - Suite 830: 2,930 RSF
- Eight private offices
- Four conference rooms
- Open workstation area
- Kitchenette
- Reception entry
- Views of the South, West and East



**SUITE 830**  
2,930 RSF

**SUITE 825**  
2,218 RSF

↑ **BACK TO AVAILABLE SPACE**



For more information or to schedule a tour, please contact:

PAUL SWEENEY  
425.646.5225  
sweeney@broderickgroup.com

JIM KINERK  
425.646.5221  
kinerk@broderickgroup.com

CLAYTON HOLM  
425.274.4287  
holm@broderickgroup.com

The information contained herein has been given to us by the owner or sources which we deem reliable. We have no reason to doubt its accuracy, but we do not guarantee it. Prospective tenants should carefully verify all information contained herein.



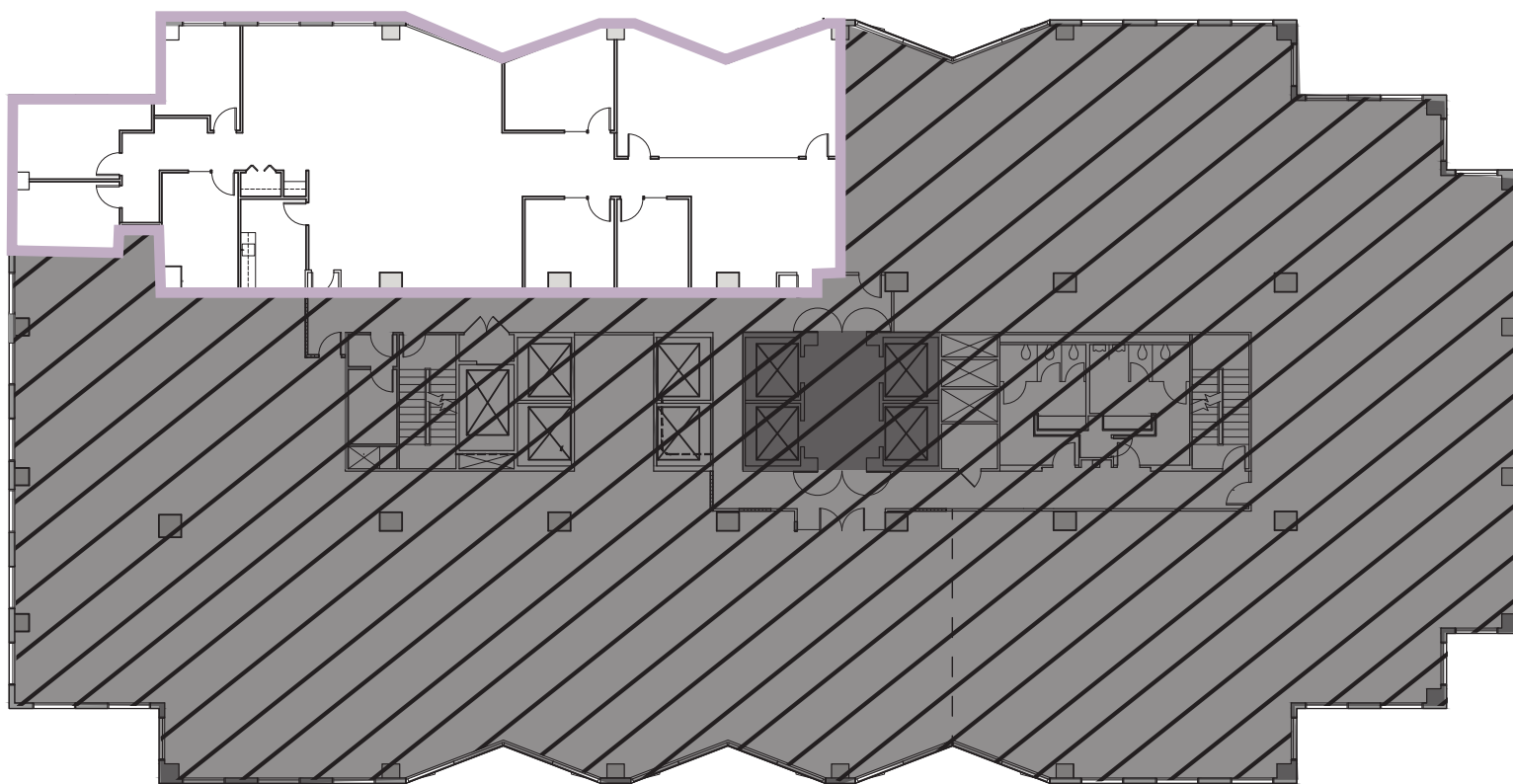
BELLEVUE PLACE BUILDING  
10500 NE 8<sup>th</sup> Street  
Bellevue, WA

# BELLEVUE PLACE BUILDING

6<sup>th</sup> Floor • Suite 625 • 4,421 RSF

## SPACE FEATURES

- Available December 1, 2027 (potentially sooner)
- Elevator lobby exposure with significant exterior window line
- Reception area, 3 conference rooms, 4 perimeter offices, open workstation areas for roughly 12-20, copy storage, and kitchen
- Polished concrete floor in entrance
- **Contiguous with Suite 600 for a total of 19,875 RSF**



↑ BACK TO AVAILABLE SPACE



NORTH



For more information or to schedule a tour, please contact:

PAUL SWEENEY  
425.646.5225

[sweeney@broderickgroup.com](mailto:sweeney@broderickgroup.com)

JIM KINERK  
425.646.5221  
[kinerk@broderickgroup.com](mailto:kinerk@broderickgroup.com)

CLAYTON HOLM  
425.274.4287  
[holm@broderickgroup.com](mailto:holm@broderickgroup.com)

The information contained herein has been given to us by the owner or sources which we deem reliable. We have no reason to doubt its accuracy, but we do not guarantee it. Prospective tenants should carefully verify all information contained herein.



BELLEVUE PLACE BUILDING  
10500 NE 8<sup>th</sup> Street  
Bellevue, WA

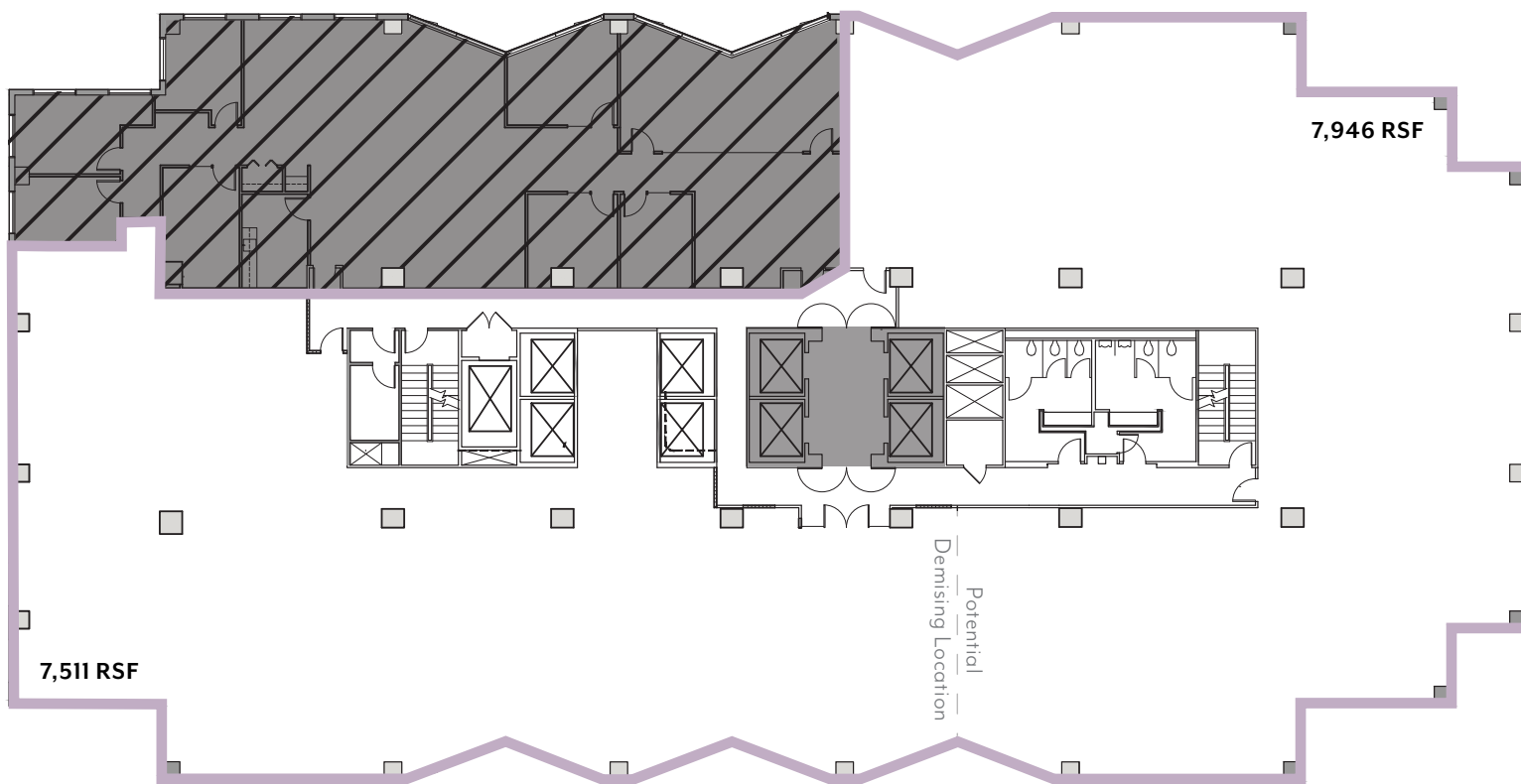
# BELLEVUE PLACE BUILDING

6<sup>th</sup> Floor • Suite 600 • 15,457 RSF



## SPACE FEATURES

- Available Now
- Currently in shell condition
- Brand new elevator lobby, common corridor renovation, and glass herculite double doors
- Divisible for a user looking for 7,511 RSF to 15,457 RSF



NORTH



For more information or to schedule a tour, please contact:

PAUL SWEENEY  
425.646.5225

[sweeney@broderickgroup.com](mailto:sweeney@broderickgroup.com)

JIM KINERK  
425.646.5221  
[kinerk@broderickgroup.com](mailto:kinerk@broderickgroup.com)

CLAYTON HOLM  
425.274.4287  
[holm@broderickgroup.com](mailto:holm@broderickgroup.com)

The information contained herein has been given to us by the owner or sources which we deem reliable. We have no reason to doubt its accuracy, but we do not guarantee it. Prospective tenants should carefully verify all information contained herein.



BELLEVUE PLACE BUILDING  
10500 NE 8<sup>th</sup> Street  
Bellevue, WA

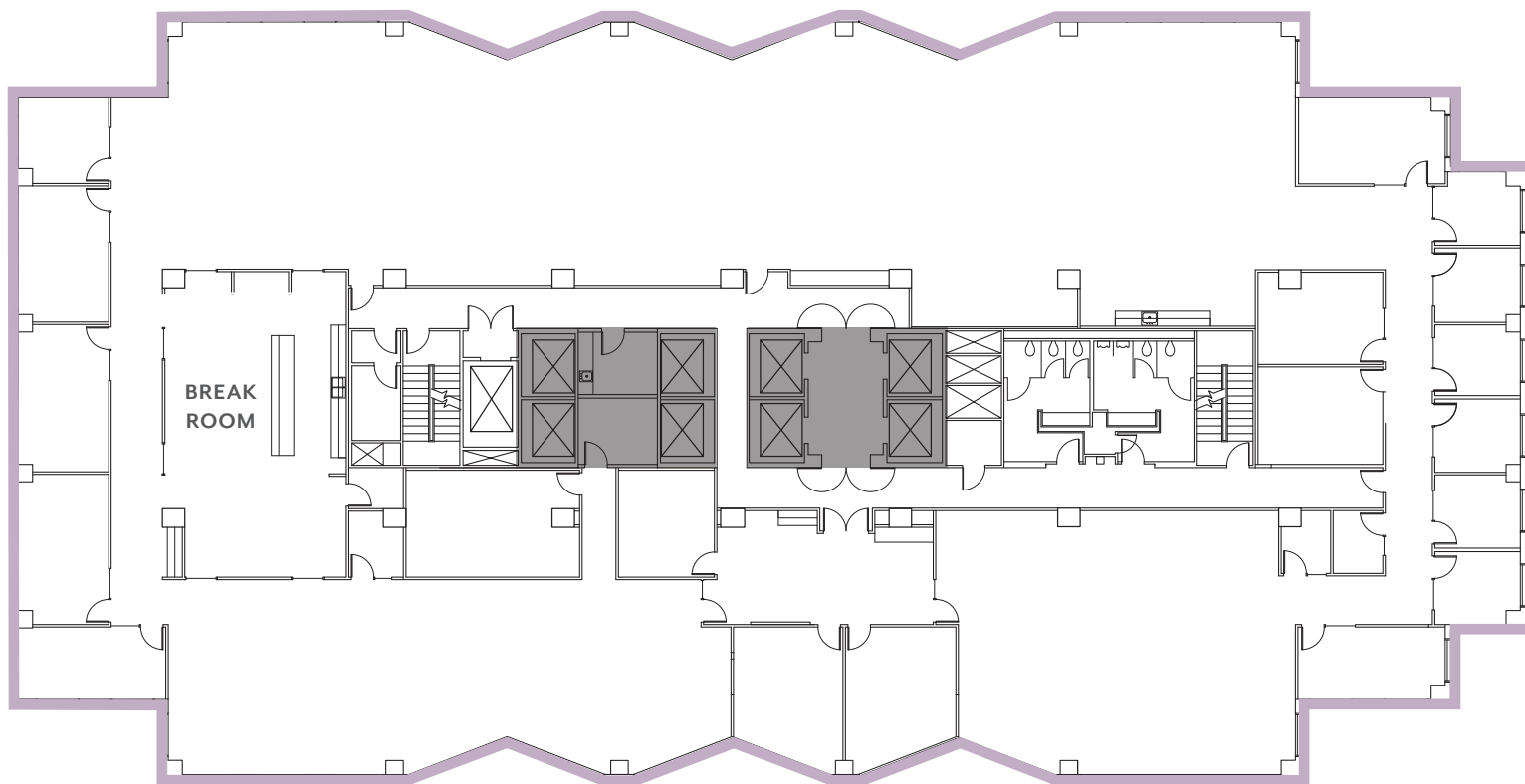
# BELLEVUE PLACE BUILDING

5<sup>th</sup> Floor • Suite 500 • 19,878 RSF

 [CLICK TO TAKE A VIRTUAL TOUR](#)

## SPACE FEATURES

- Available Now
- Full floor with modern finishes
- Balance of open area for workstations and private offices
- High-end break room



For more information or to schedule a tour, please contact:

PAUL SWEENEY  
425.646.5225  
[sweeney@broderickgroup.com](mailto:sweeney@broderickgroup.com)

JIM KINERK  
425.646.5221  
[kinerk@broderickgroup.com](mailto:kinerk@broderickgroup.com)

CLAYTON HOLM  
425.274.4287  
[holm@broderickgroup.com](mailto:holm@broderickgroup.com)

The information contained herein has been given to us by the owner or sources which we deem reliable. We have no reason to doubt its accuracy, but we do not guarantee it. Prospective tenants should carefully verify all information contained herein.

 [BACK TO AVAILABLE SPACE](#)



NORTH



BELLEVUE PLACE BUILDING  
10500 NE 8<sup>th</sup> Street  
Bellevue, WA

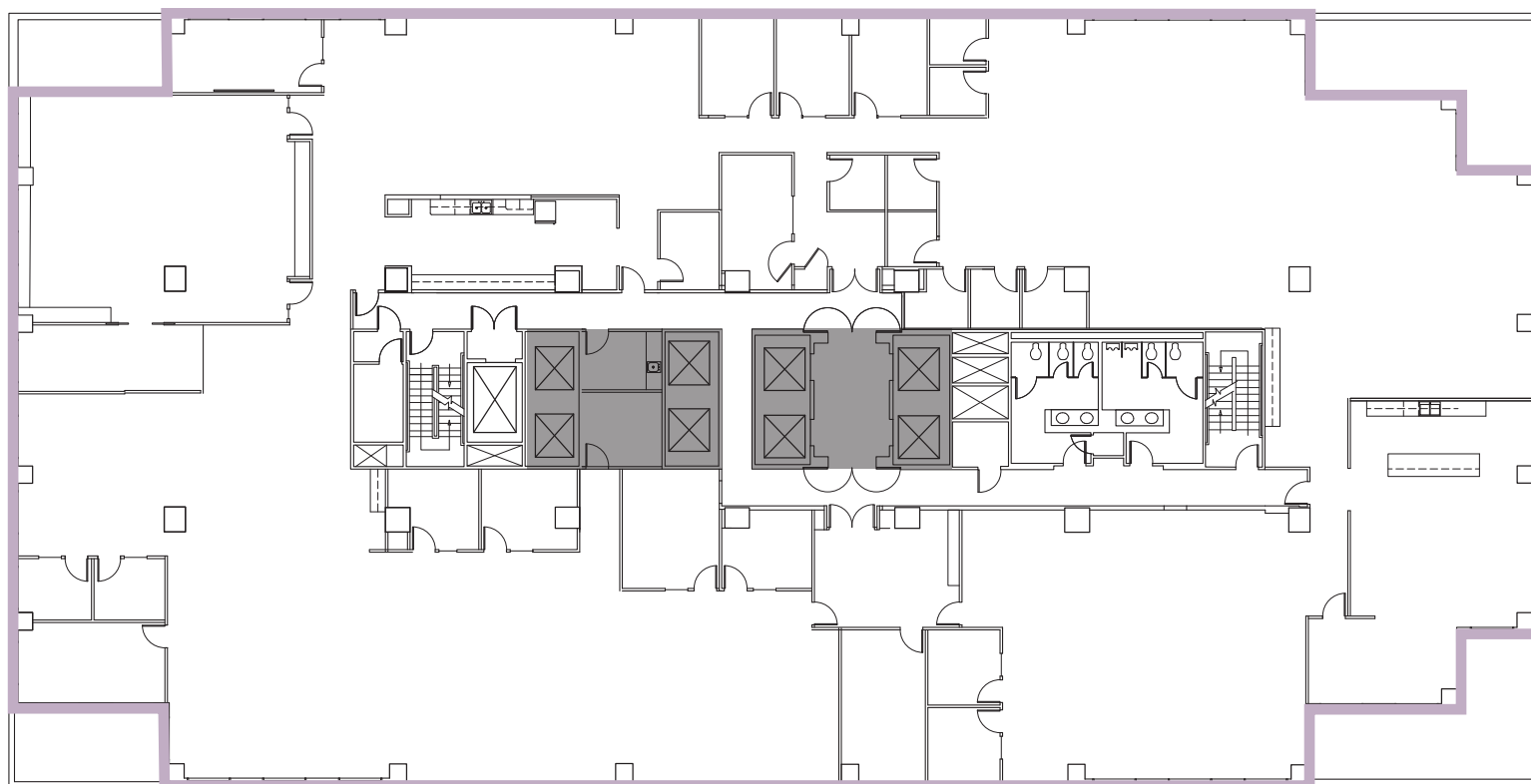
# BELLEVUE PLACE BUILDING

4<sup>th</sup> Floor • Suite 400 • 20,350 RSF



## SPACE FEATURES

- Available Now
- Full floor
- Mixture of meeting rooms, private offices and open area



[↑ BACK TO AVAILABLE SPACE](#)



NORTH



For more information or to schedule a tour, please contact:

PAUL SWEENEY  
425.646.5225

[sweeney@broderickgroup.com](mailto:sweeney@broderickgroup.com)

JIM KINERK  
425.646.5221  
[kinerk@broderickgroup.com](mailto:kinerk@broderickgroup.com)

CLAYTON HOLM  
425.274.4287  
[holm@broderickgroup.com](mailto:holm@broderickgroup.com)

The information contained herein has been given to us by the owner or sources which we deem reliable. We have no reason to doubt its accuracy, but we do not guarantee it. Prospective tenants should carefully verify all information contained herein.



BELLEVUE PLACE BUILDING  
10500 NE 8<sup>th</sup> Street  
Bellevue, WA

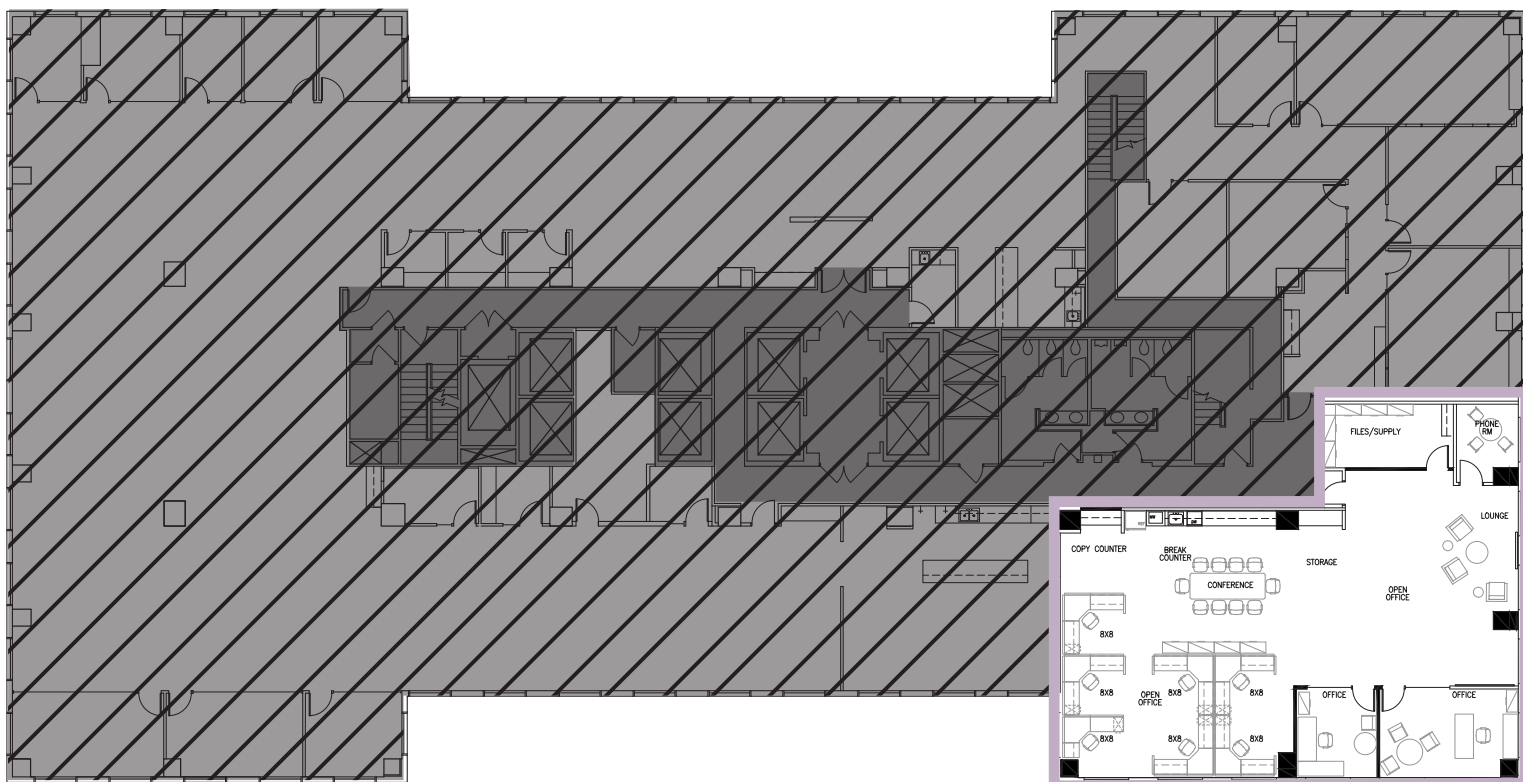
# BELLEVUE PLACE BUILDING

3<sup>rd</sup> Floor • Suite 301 • 3,385 RSF



## SPACE FEATURES

- Available Now
- Efficient open layout with flexible layout potential
- Two private offices
- Open kitchen concept
- **Contiguous with Suite 300 for a total of 19,325 RSF**



For more information or to schedule a tour, please contact:

PAUL SWEENEY  
425.646.5225  
sweeney@broderickgroup.com

JIM KINERK  
425.646.5221  
kinerk@broderickgroup.com

CLAYTON HOLM  
425.274.4287  
holm@broderickgroup.com

The information contained herein has been given to us by the owner or sources which we deem reliable. We have no reason to doubt its accuracy, but we do not guarantee it. Prospective tenants should carefully verify all information contained herein.



NORTH



BELLEVUE PLACE BUILDING  
10500 NE 8<sup>th</sup> Street  
Bellevue, WA

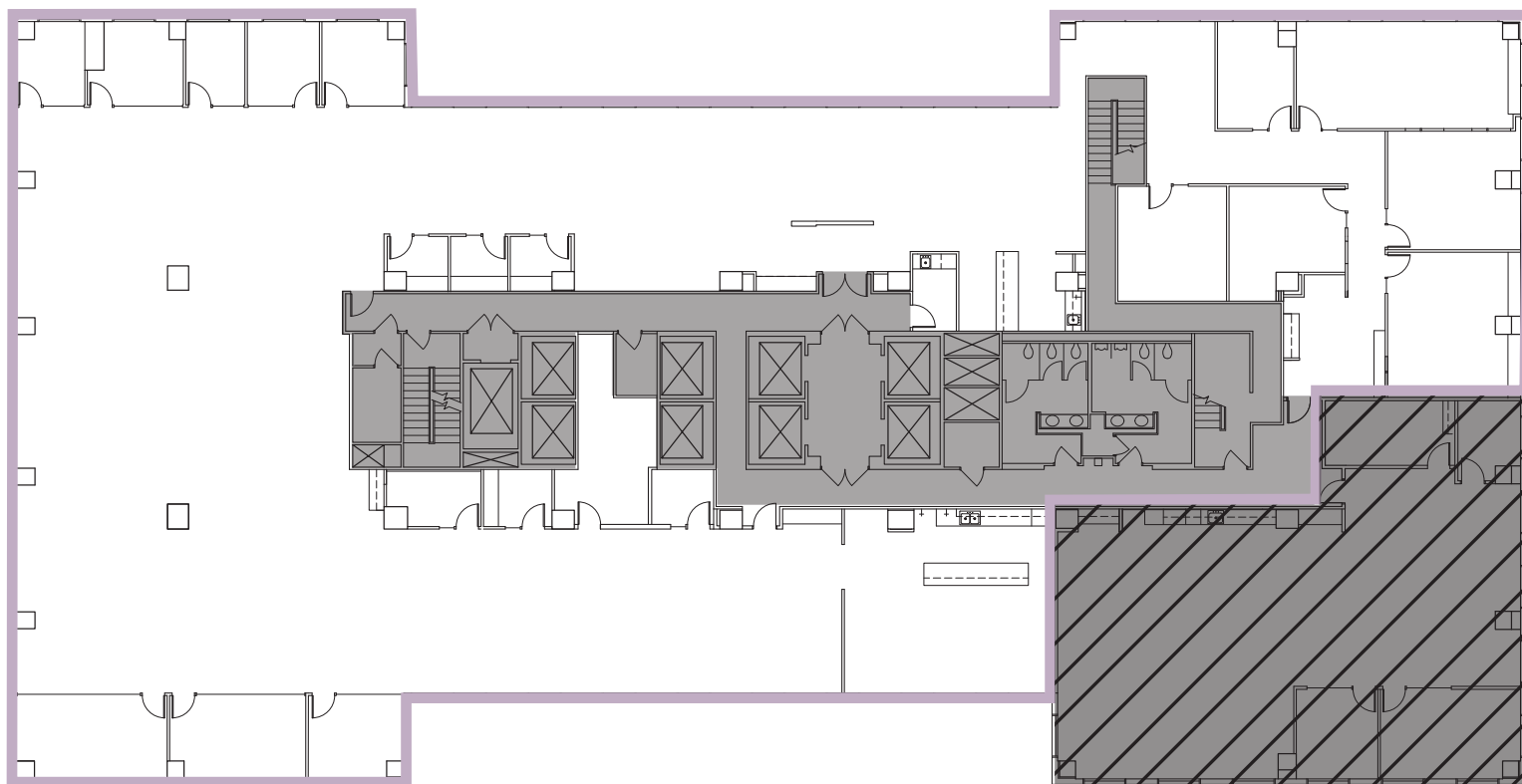
# BELLEVUE PLACE BUILDING

3<sup>rd</sup> Floor • Suite 300 • 15,940 RSF



## SPACE FEATURES

- Available Now
- Balance of open area and private offices
- Renovated break area
- **Contiguous with Suite 301 for a total of 19,325 RSF**



NORTH



For more information or to schedule a tour, please contact:

PAUL SWEENEY  
425.646.5225  
sweeney@broderickgroup.com

JIM KINERK  
425.646.5221  
kinerk@broderickgroup.com

CLAYTON HOLM  
425.274.4287  
holm@broderickgroup.com

The information contained herein has been given to us by the owner or sources which we deem reliable. We have no reason to doubt its accuracy, but we do not guarantee it. Prospective tenants should carefully verify all information contained herein.



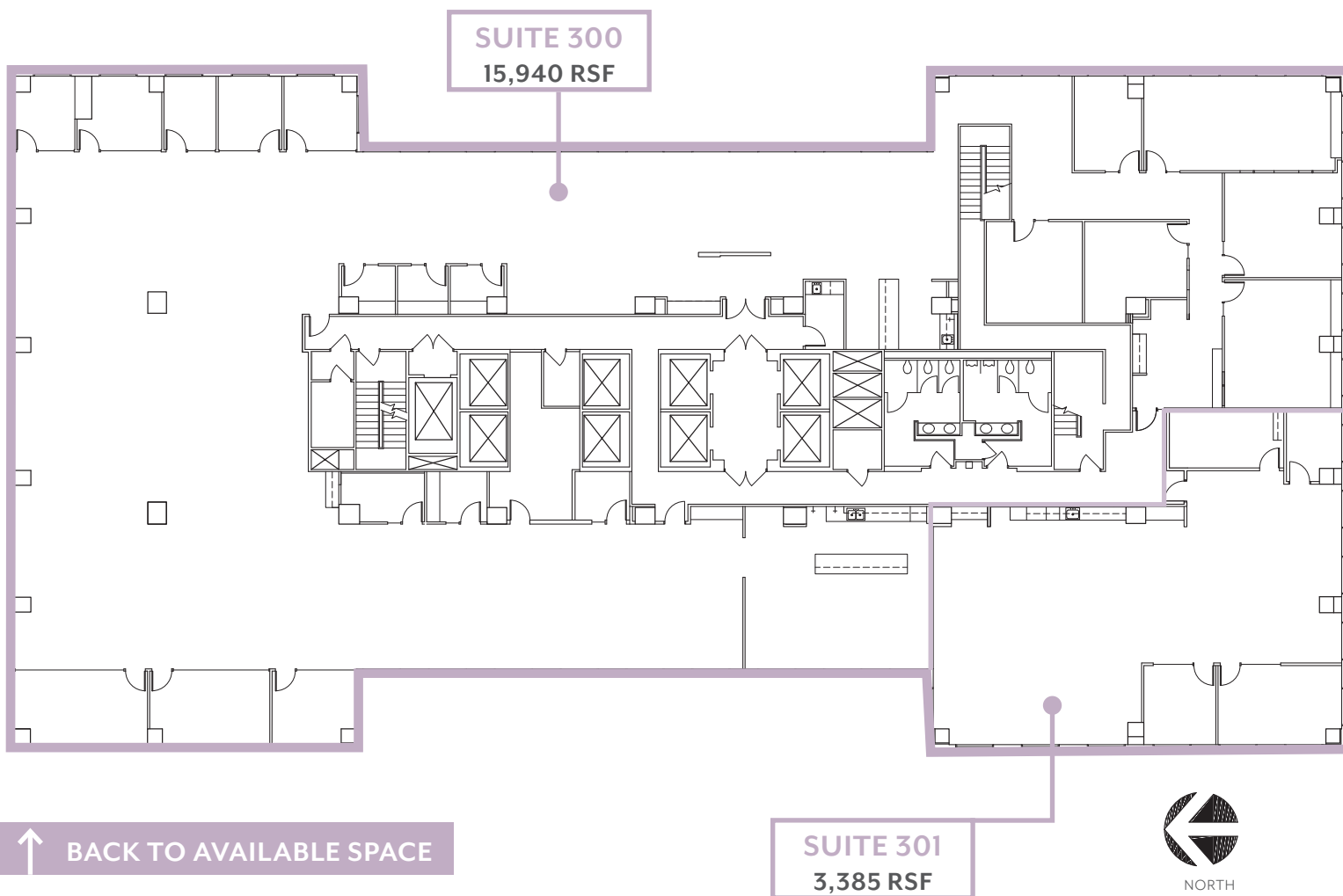
**BELLEVUE PLACE BUILDING**  
 10500 NE 8<sup>th</sup> Street  
 Bellevue, WA

# BELLEVUE PLACE BUILDING

3<sup>rd</sup> Floor • **Suite 300 & 301** • 19,325 RSF

## SPACE FEATURES

- Available Now
- Currently two separate suites that combine for a total of 19,325 RSF
  - Suite 300: 15,940 RSF
  - Suite 301: 3,385 RSF
- Efficient open area and private offices with flexibility
- Open kitchen concept
- Renovated break area



For more information or to schedule a tour, please contact:

**PAUL SWEENEY**  
 425.646.5225

[sweeney@broderickgroup.com](mailto:sweeney@broderickgroup.com)

**JIM KINERK**  
 425.646.5221  
[kinerk@broderickgroup.com](mailto:kinerk@broderickgroup.com)

**CLAYTON HOLM**  
 425.274.4287  
[holm@broderickgroup.com](mailto:holm@broderickgroup.com)

The information contained herein has been given to us by the owner or sources which we deem reliable. We have no reason to doubt its accuracy, but we do not guarantee it. Prospective tenants should carefully verify all information contained herein.



BELLEVUE PLACE BUILDING  
10500 NE 8<sup>th</sup> Street  
Bellevue, WA

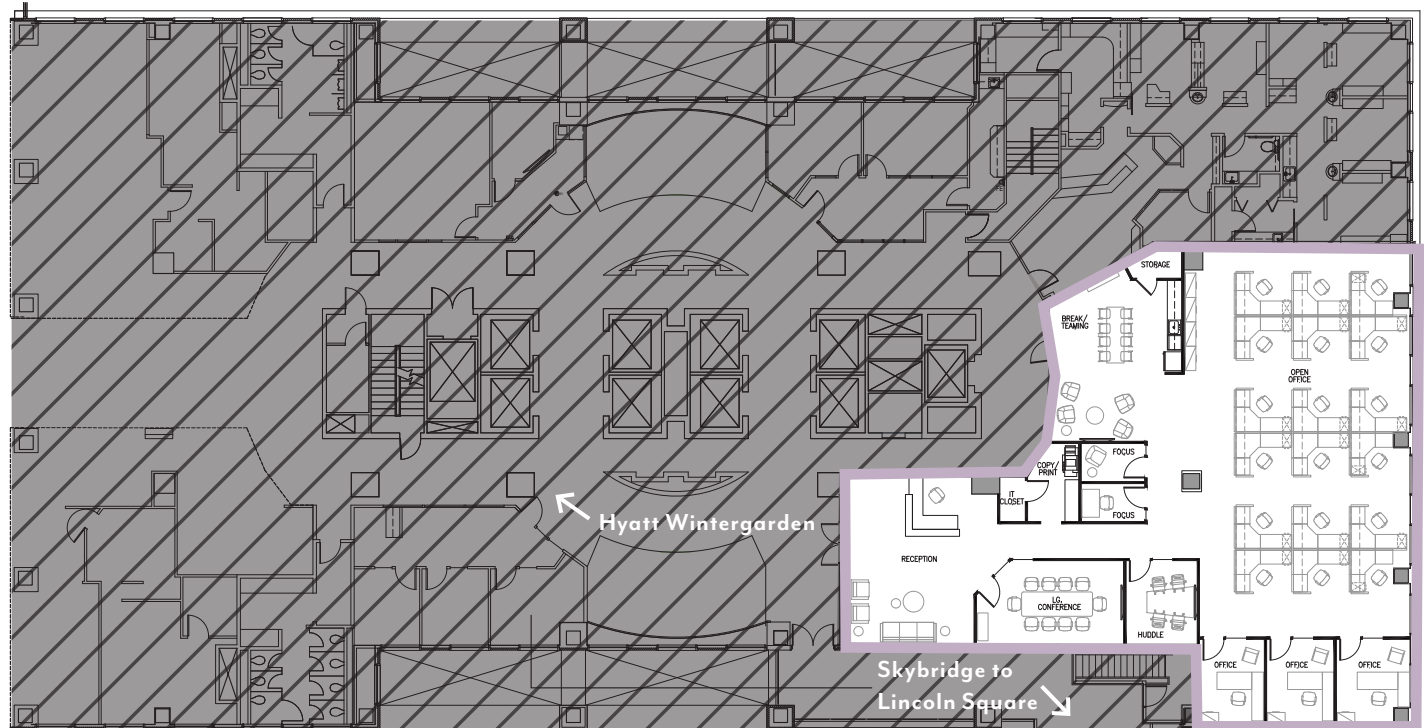
# BELLEVUE PLACE BUILDING

2<sup>nd</sup> Floor • Suite 214 • 5,023 RSF



## SPACE FEATURES

- Available Now
- Double door entry with substantial foot traffic and direct access to Bellevue Place / Lincoln Square North skybridge
- Easy to find; great for client-facing companies
- Exterior ceiling heights of 13.5'
- Overlooks NE 8th Street
- **Currently in shell condition, market plan shown below**



NORTH



For more information or to schedule a tour, please contact:

PAUL SWEENEY  
425.646.5225

sweeney@broderickgroup.com

JIM KINERK  
425.646.5221  
kinerk@broderickgroup.com

CLAYTON HOLM  
425.274.4287  
holm@broderickgroup.com

The information contained herein has been given to us by the owner or sources which we deem reliable. We have no reason to doubt its accuracy, but we do not guarantee it. Prospective tenants should carefully verify all information contained herein.



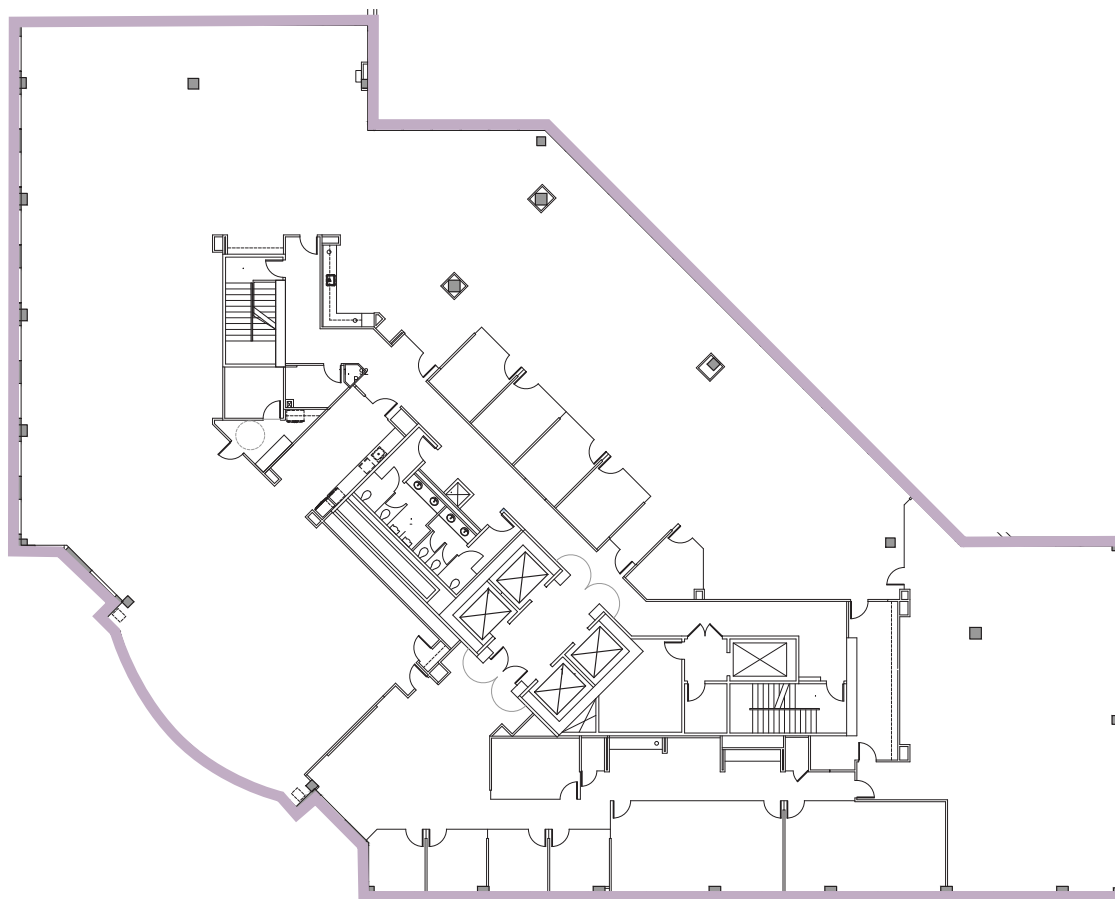
CORNER BUILDING  
800 Bellevue Way NE  
Bellevue, WA

## CORNER BUILDING

4<sup>th</sup> Floor • Suite 400 • 21,853 RSF

### SPACE FEATURES

- Available February 1, 2027
- Great condition with reusable buildout
- Primarily open work space with plenty of interior conference rooms
- Four window line private offices
- **Can be combined with 3<sup>rd</sup> floor and 2<sup>nd</sup> floor for a total of 45,604 – 60,539 RSF**



↑ BACK TO AVAILABLE SPACE



NORTH



For more information or to schedule a tour, please contact:

PAUL SWEENEY  
425.646.5225  
sweeney@broderickgroup.com

JIM KINERK  
425.646.5221  
kinerk@broderickgroup.com

CLAYTON HOLM  
425.274.4287  
holm@broderickgroup.com

The information contained herein has been given to us by the owner or sources which we deem reliable. We have no reason to doubt its accuracy, but we do not guarantee it. Prospective tenants should carefully verify all information contained herein.



CORNER BUILDING  
800 Bellevue Way NE  
Bellevue, WA

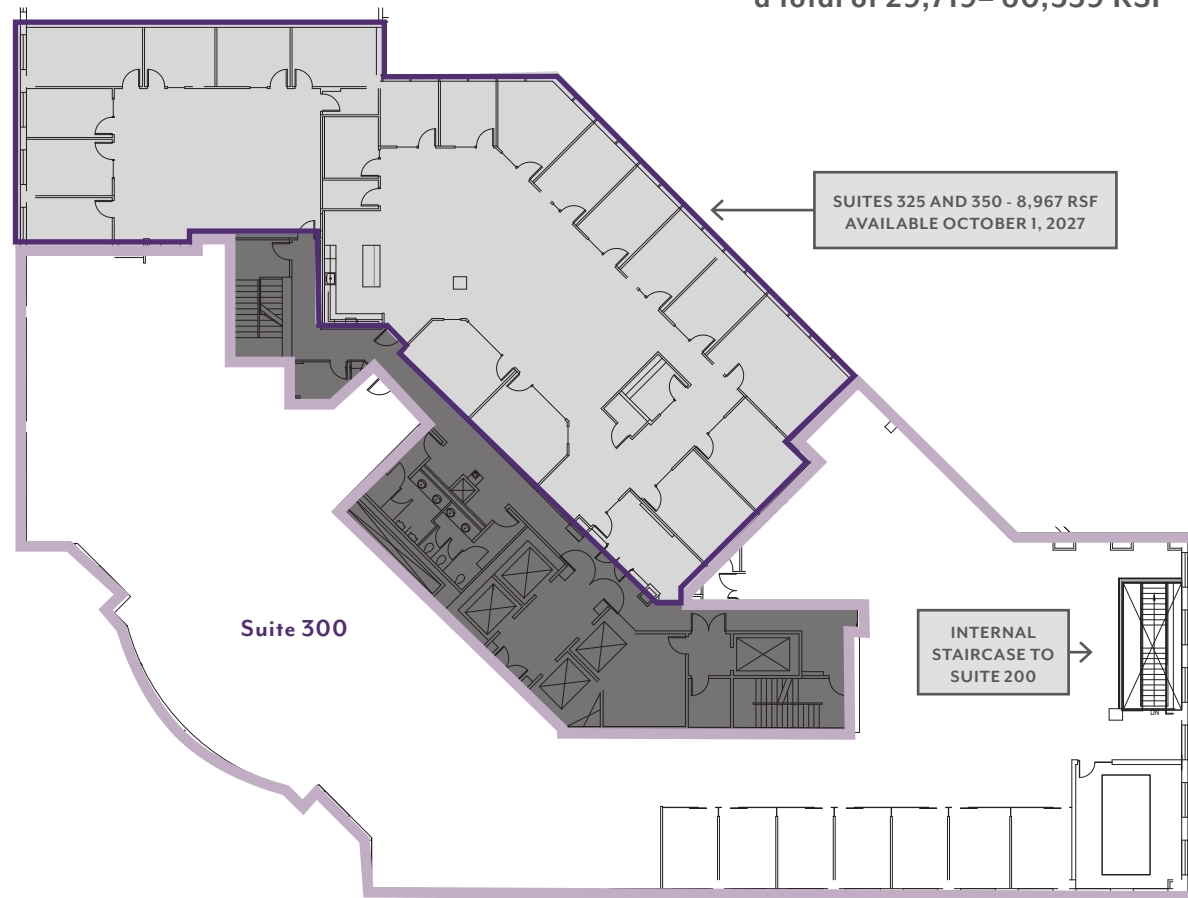
# CORNER BUILDING

3<sup>rd</sup> Floor • Suite 300 • 14,784 – 23,751 RSF

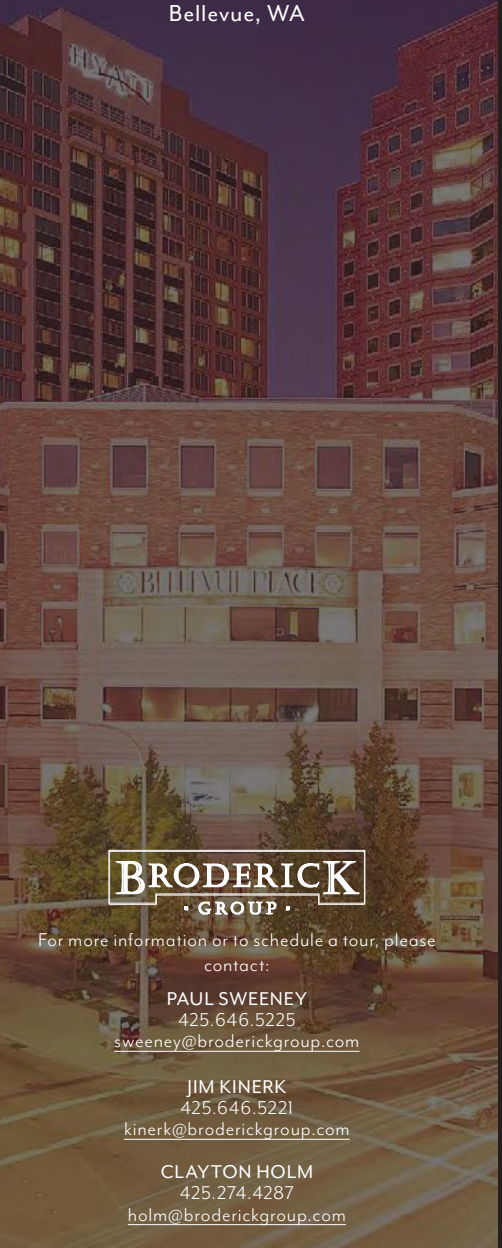
 [CLICK TO TAKE A VIRTUAL TOUR](#)

## SPACE FEATURES

- Available Now
- Shell condition with a conference room and 7 private offices in place
- High-end glass private offices
- Connected to Suite 200 with an internal staircase
- New double-door glass entrance
- New elevator lobby and corridor renovation
- **Remaining spaces on the floor are available October 1, 2027 for a total of 23,751 RSF**
- **Ability to combine with Floor 2 and Floor 4 for a total of 29,719– 60,539 RSF**



 [BACK TO AVAILABLE SPACE](#)



For more information or to schedule a tour, please contact:

PAUL SWEENEY  
425.646.5225  
sweeney@broderickgroup.com

JIM KINERK  
425.646.5221  
kinerk@broderickgroup.com

CLAYTON HOLM  
425.274.4287  
holm@broderickgroup.com

The information contained herein has been given to us by the owner or sources which we deem reliable. We have no reason to doubt its accuracy, but we do not guarantee it. Prospective tenants should carefully verify all information contained herein.



CORNER BUILDING  
800 Bellevue Way NE  
Bellevue, WA

## CORNER BUILDING

2<sup>nd</sup> Floor • Suite 200 • 14,935 RSF



CLICK TO TAKE A  
VIRTUAL TOUR

### SPACE FEATURES

- Available Now
- High ceilings
- High-end glass private office buildout
- Break area with seating and exposed ceilings
- Internal staircase to the 3<sup>rd</sup> floor
- Can be combined with 3<sup>rd</sup> floor and 2<sup>nd</sup> floor for a total of 45,604 – 60,539 RSF



INTERNAL  
STAIRCASE TO  
SUITE 300

↑ BACK TO AVAILABLE SPACE



NORTH



For more information or to schedule a tour, please contact:

PAUL SWEENEY  
425.646.5225  
sweeney@broderickgroup.com

JIM KINERK  
425.646.5221  
kinerk@broderickgroup.com

CLAYTON HOLM  
425.274.4287  
holm@broderickgroup.com

The information contained herein has been given to us by the owner or sources which we deem reliable. We have no reason to doubt its accuracy, but we do not guarantee it. Prospective tenants should carefully verify all information contained herein.