

# QW

## QUADRANT WILLOWS BUILDING D

STANDALONE SINGLE TENANT LEASE OPPORTUNITY



11261 WILLOWS RD NE  
REDMOND, WASHINGTON

# PROPERTY HIGHLIGHTS



Highly sought-after Redmond location surrounded by leading corporate employers including Meta, Amazon, Microsoft, SpaceX, and Google.



Immediate access to SR-520 and I-405 with nearby mass-transit connectivity.



Efficient floor plates offering abundant natural light, flexible layouts, and unobstructed views.



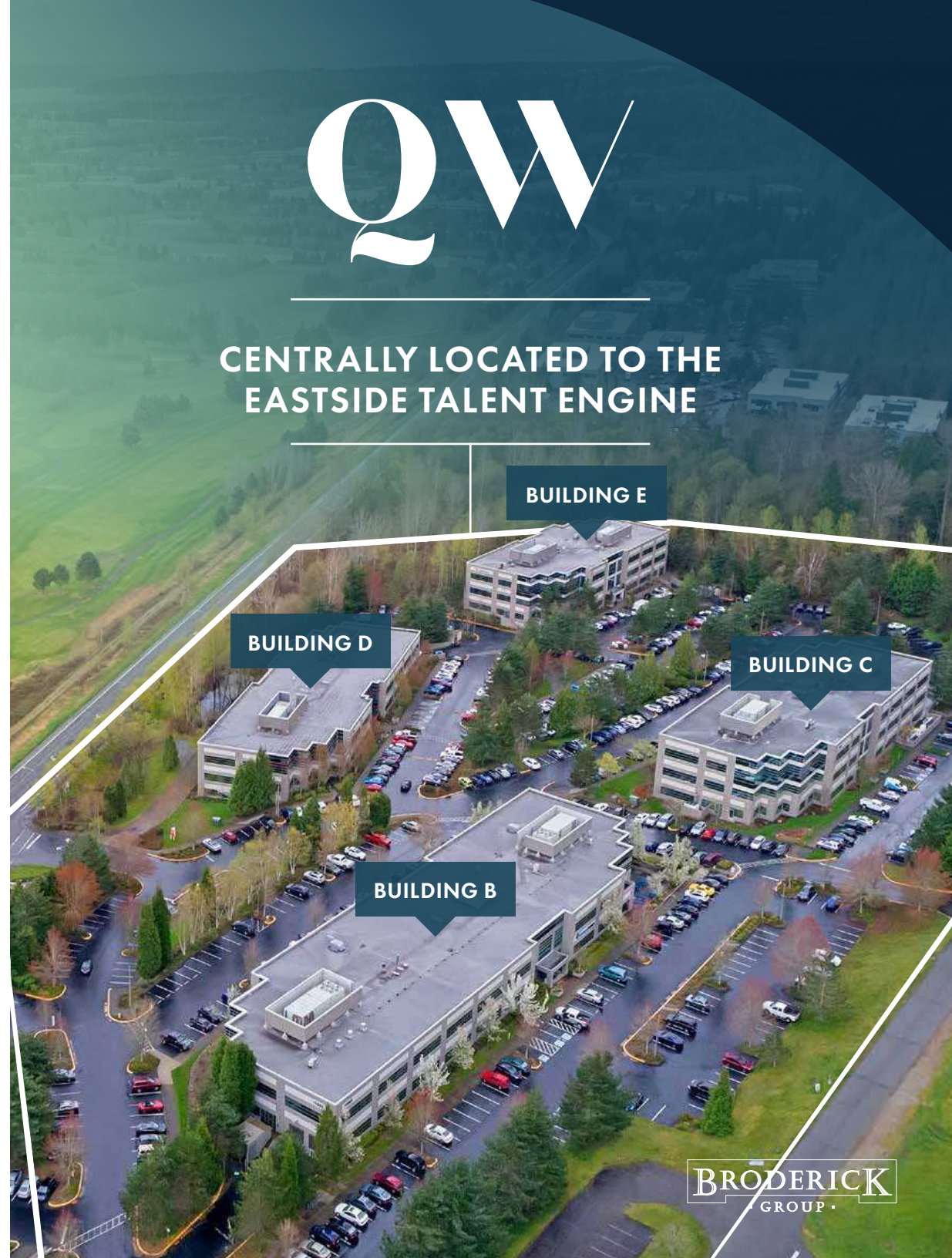
Conveniently located between downtown Redmond and Totem Lake retail amenities, including the highly desirable Redmond Town Center and The Village at Totem Lake.



Direct access to the local biking infrastructure, including the Redmond Central Connector, Cross Kirkland corridor and Sammamish River Trail.

# QW

## CENTRALLY LOCATED TO THE EASTSIDE TALENT ENGINE





**QW**  
QUADRANT WILLOWS

EST. 2015  
**THE VILLAGE**  
AT TOTEM LAKE

- BIKE ROUTE
- LINK LIGHT RAIL
- RAPID TRANSIT

# DRIVE TIMES

**DOWNTOWN BELLEVUE**  
12 MINUTES | 9 MILES

**DOWNTOWN REDMOND**  
9 MINUTES | 4 MILES

**KIRKLAND**  
10 MINUTES | 5 MILES

**DOWNTOWN SEATTLE**  
22 MINUTES | 18 MILES

# NEARBY TENANTS



BUNGIE

SPACEX



Google



Meta



QW

QUADRANT WILLOWS



AEROJET  
ROCKETDYNE

amazon.com

stryker

ASTRONICS

## LEADING TECH, HARDWARE, & AEROSPACE USERS

Quadrant Willows is located within Redmond's established technology corridor, surrounded by a concentration of leading tech and innovation-driven users. Proximity to major employers such as Meta and other prominent Eastside technology firms reinforces the area's role as a core hub for engineering, R&D, and advanced office users. This tech-centric environment supports long-term tenant demand while offering a highly connected, business-focused setting.

# NEARBY AMENITIES



## REDMOND TOWN CENTER

Quadrant Willows is located just minutes from Redmond Town Center, an established upscale amenity hub offering a refined mix of retail, dining, and services. This nearby destination provides convenient access to high-quality restaurants, boutique fitness, and curated retail within a vibrant, pedestrian-friendly environment—enhancing the daily employee experience while reinforcing the property’s premier Redmond location.



Located near The Village at Totem Lake, the property benefits from immediate access to one of Kirkland’s premier upscale amenity destinations. The Village at Totem Lake offers a thoughtfully curated mix of high-quality retail, dining, and everyday services within a modern, walkable environment—providing a convenient and elevated amenity base that enhances the overall employee experience.



BARNES & NOBLE



## FACT SHEET

<b>CAMPUS SIZE</b>	246,899 SF over 4 buildings / Building D - 54,062 SF
<b>LAND AREA</b>	16.55 acres
<b>2026 ESTIMATED OPEX</b>	\$12.50/SF/Yr
<b>PARKING</b>	Building D: 164 Parking Stalls (50 covered / 114 uncovered) equates to 3.03 stalls / 1,000 SF
<b>LOADING</b>	Dock high loading with 10'x10' roll up door
<b>SPRINKLERS</b>	Wet systems on floors 1 & 2 and dry system in garage
<b>POWER</b>	277/480 3-phase power: 2,100 amps at the switchgear. Generator pad in garage, which previously housed 400Hz generator serving floor 1.
<b>CEILING HEIGHTS</b>	9' finished ceiling height, 14.5' deck height
<b>ELEVATORS</b>	One elevator serving all levels - 3,000lb capacity
<b>FEATURES</b>	Bike storage and repair station. Compressed air lines throughout second floor. Quality office furniture available on 2nd floor

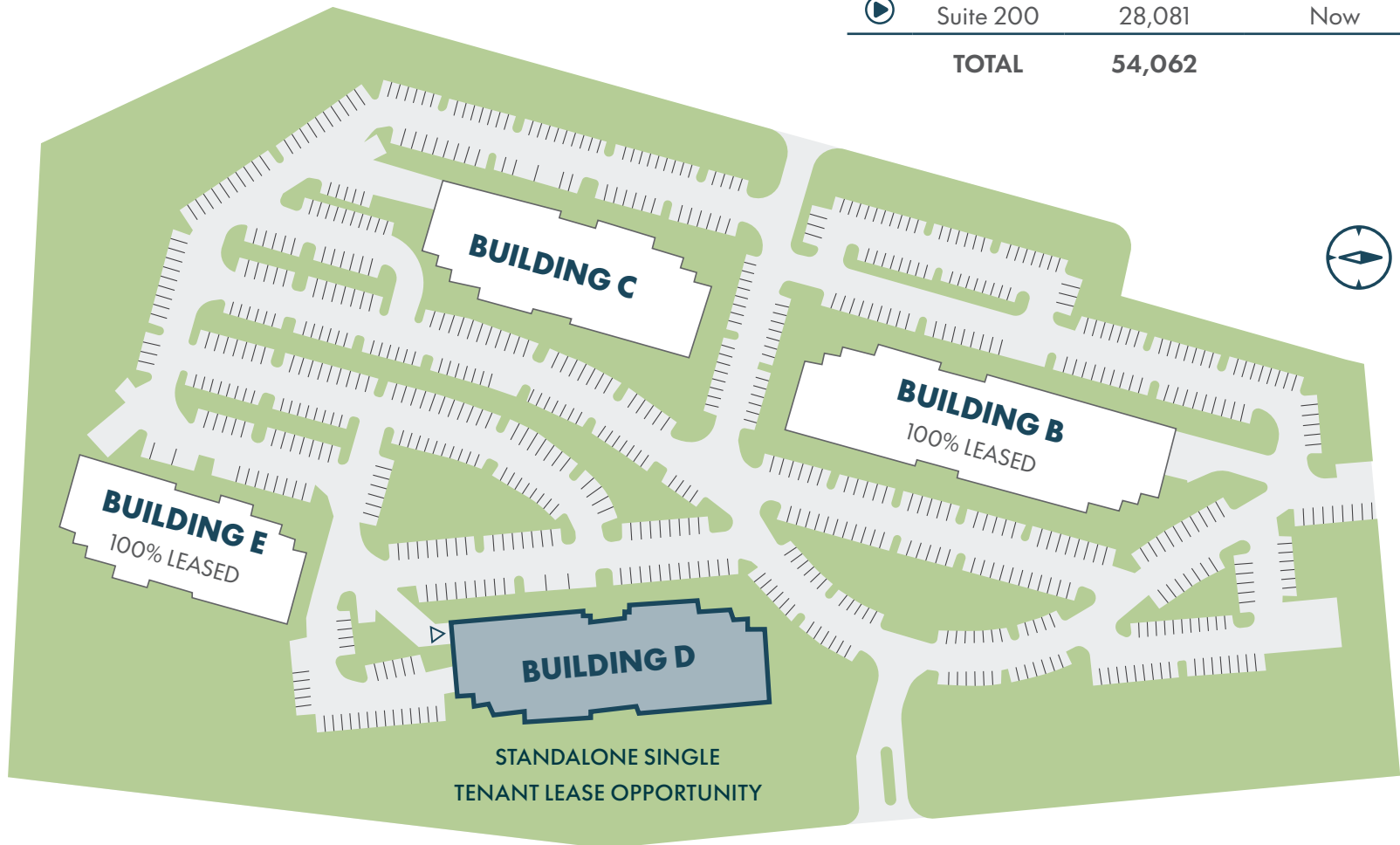


QUADRANT WILLOWS

# AVAILABILITY

## BUILDING D

SUITE	RSF	AVAILABLE
▶ Suite 100	25,981	July 1, 2026
▶ Suite 200	28,081	Now
<b>TOTAL</b>	<b>54,062</b>	



△ DOCK HIGH LOADING

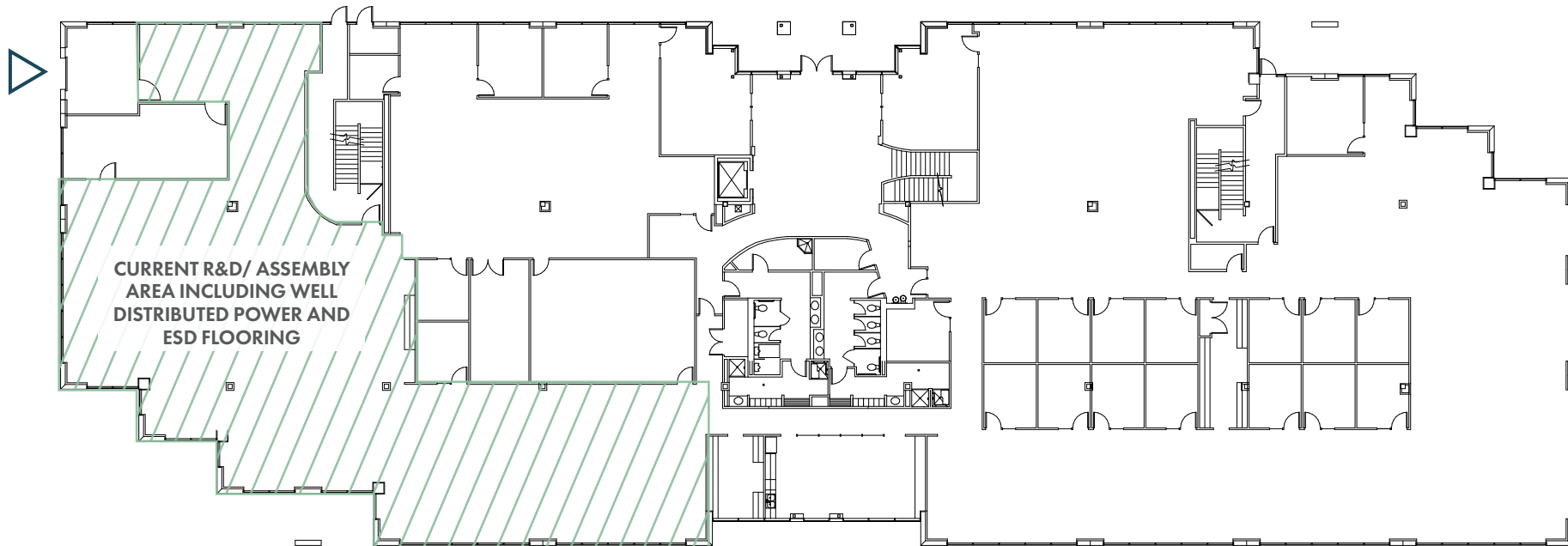
WILLOWS RD



# Building D | Floor 1

25,981 RSF | AVAILABLE 7/1/26

 [CLICK TO VIEW  
VIRTUAL TOUR](#)



**ERIC MEUSSNER**

(425) 274-4282

meussner@broderickgroup.com

**JEFF LIVINGSTON**

(425) 274-4288

livingston@broderickgroup.com

**MICK LARSEN**

(425) 274-4921

larsen@broderickgroup.com



# Building D | Floor 2

28,081 RSF | AVAILABLE NOW

 [CLICK TO VIEW  
VIRTUAL TOUR](#)



 R&D / LAB  KITCHEN / BREAK

**ERIC MEUSSNER**

(425) 274-4282

meussner@broderickgroup.com

**JEFF LIVINGSTON**

(425) 274-4288

livingston@broderickgroup.com

**MICK LARSEN**

(425) 274-4921

larsen@broderickgroup.com

# QW

## QUADRANT WILLOWS

**ERIC MEUSSNER**

(425) 274-4282

meussner@broderickgroup.com

**JEFF LIVINGSTON**

(425) 274-4288

livingston@broderickgroup.com

**MICK LARSEN**

(425) 274-4921

larsen@broderickgroup.com

**BRODERICK**  
• GROUP •

The information contained herein has been given to us by the owner or sources that we deem reliable. We have no reason to doubt its accuracy, but we do not guarantee it. Prospective tenants should carefully verify all information contained herein.