



# PUGET SOUND PLAZA





# PUGET SOUND PLAZA

1325 Fourth Avenue | Seattle, Washington 98101



## BUILDING FACTS

- » Total Building Size..... 279,586 RSF
- » Number of Floors ..... 21
- » Average Floor Plate..... 13,800 RSF
- » Year Built..... 1960
- » Parking Ratio..... 1 / 1,800 SF
- » LEED Gold Certified
- » Fitwel Viral Response Certified

## BUILDING AMENITIES

- ▶ » Lobby
- ▶ » Conference room facility
- ▶ » Shower
- » 306 parking stalls
- » EV charging system
- ▶ » Bike storage
- ▶ » MT Fitness Center located on the Lower Level of Rainier Tower

## ON-SITE RETAIL

- » Key Bank
- » Seattle Vision Care
- » Kudedon Noodles



**Fitwel®**  
Viral Response  
Certified

▶ Click the play buttons for virtual tours



**Damon McCartney**  
(206) 838-7633  
mccartney@broderickgroup.com

**David Greenwood**  
(206) 838-7635  
greenwood@broderickgroup.com



# PUGET SOUND PLAZA

1325 Fourth Avenue | Seattle, Washington 98101

## Lifestyle

1. Regal Cinemas
2. Westlake Park
3. Home Street Bank
4. 5th Avenue Theater
5. U.S. Post Office
6. Key Bank
7. Benaroya Hall
8. Seattle Art Museum
9. Queen Bee Nail Spa
10. American West Bank
11. UPS Store
12. Union Bank
13. Seattle Infant Development Center
14. Banner Bank
15. Bank of America
16. Seattle Public Library
17. Samir's Salon
18. Silicon Valley Bank
19. Downtown Dentistry
20. Capelli's Barbershop
21. Northwest Bank
22. YMCA - Facility / Child Care
23. Equinox Gym
24. Graham Rehabilitation and Wellness Center, Inc.

## Restaurant / Bar

1. Cheesecake Factory
2. SPIN Seattle
3. Ben Paris
4. Hard Rock Café
5. Blarney Stone Pub
6. Japonessa
7. Wild Ginger
8. Elephant & Castle
9. Ruth's Chris Steak House
10. Cortina
11. Goldfinch Tavern
12. Post Alley Pizza
13. Purple Café & Wine Bar
14. Outlier
15. Lobby Court
16. Tulio
17. Charlotte Restaurant & Lounge
18. Schuckers
19. Capital Grille

## Coffee House

1. Starbucks
2. Fonte
3. Pegasus Coffee Bar
4. Vovito
5. Retro Coffee
6. Caffe Ladro
7. Cafe Miglore
8. Fonte

## Hotel

1. Grand Hyatt Hotel
2. Sheraton Hotel
3. Hilton Seattle
4. Hotel Vintage Seattle
5. W Seattle
6. Hotel 1000
7. Renaissance Seattle Hotel

## Deli / Grab & Go

1. McDonald's
2. Pho 25
3. Chipotle
4. Gelatiamo
5. Sushi Kudasai
6. Jimmy John's
7. Subway
8. MOD Pizza
9. Melange Market
10. The Deli
11. Potbelly Sandwich Shop
12. Blue Water Taco Grill
13. Homegrown Sustainable Sandwich Shop
14. Evergreens Salad
15. Market Fresh
16. PCC Market (NEW)
17. Kudedon Noodles
18. Mendocino Farms (NEW)

## Retail

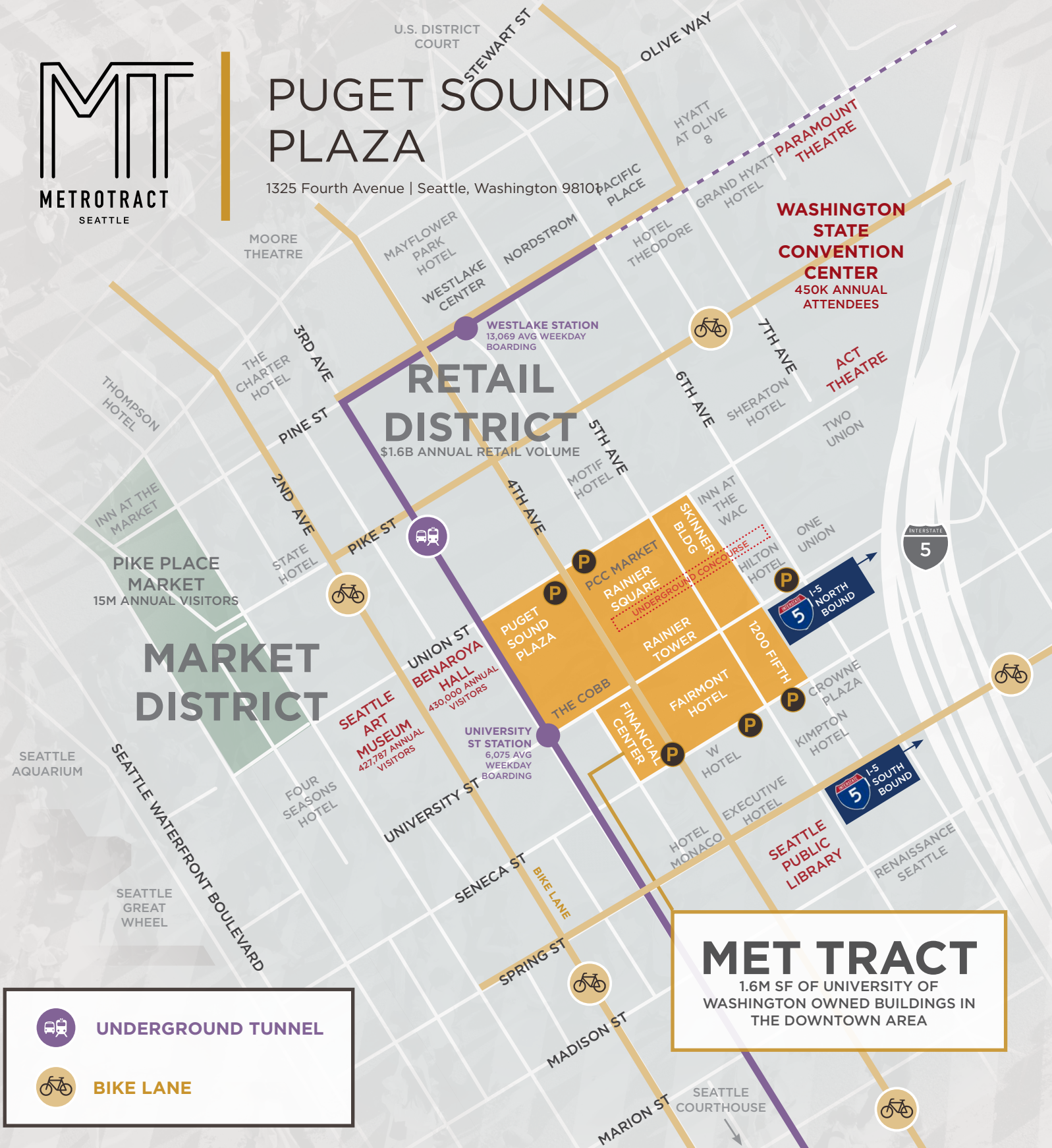
1. Old Navy
2. AT&T
3. Nordstrom Rack
4. ZARA
5. Target
6. Nordstrom
7. Ross Dress for Less
8. Urban Outfitters
9. Ben Bridge Jeweler
10. Watson Kennedy Fine Home
11. Bartell Drugs





# PUGET SOUND PLAZA

1325 Fourth Avenue | Seattle, Washington 98104



## RETAIL DISTRICT

\$1.6B ANNUAL RETAIL VOLUME

## MARKET DISTRICT

## MET TRACT

1.6M SF OF UNIVERSITY OF WASHINGTON OWNED BUILDINGS IN THE DOWNTOWN AREA

- UNDERGROUND TUNNEL
- BIKE LANE



# PUGET SOUND PLAZA

1325 Fourth Avenue  
Seattle, Washington 98101

**Damon McCartney**  
(206) 838-7633  
mccartney@broderickgroup.com

**David Greenwood**  
(206) 838-7635  
greenwood@broderickgroup.com



Broderick Group, Inc.  
10500 NE 8th Street, Suite 900  
Bellevue, WA 98004  
main: (206) 838-5775

broderickgroup.com

The information contained herein has been given to us by the owner or sources which we deem reliable. We have no reason to doubt its accuracy, but we do not guarantee it. Prospective tenants should carefully verify all information contained herein.

## CURRENT AVAILABLE SUITES

Floor / Suite	RSF	Comments
<a href="#">20/2000</a>	13,630	<b>Available now!</b> Open work area, kitchenette, multiple private offices, multiple conference rooms. <b>Virtual Tour available at <a href="https://bit.ly/3S1UiyC">bit.ly/3S1UiyC</a></b>
<a href="#">19/1945</a>	940	<b>Available now!</b> Private office, open work area and kitchenette. Contiguous option with Suite 1940 for a total of 4,933 RSF.
<a href="#">19/1940</a>	3,993	<b>Available now!</b> Open work area and kitchenette. Contiguous option with Suite 1945 for a total of 4,933 RSF.
<a href="#">16/1600</a>	6,882	<b>Available now!</b> Multiple private offices, multiple conference rooms and kitchenette. <b>Virtual Tour available at <a href="https://bit.ly/3AXDm75">bit.ly/3AXDm75</a></b>
<a href="#">15/1510</a>	1,017	<b>Available now!</b> Private office, open area, and a conference room. <b>Virtual Tour available at <a href="https://bit.ly/4g91GD8">bit.ly/4g91GD8</a></b>
<a href="#">13/1345</a>	456	<b>Available 7/1/2026</b>
<a href="#">13/1305</a>	2,380	<b>Available now!</b> Kitchenette, open work area, private office and multiple conference rooms
<a href="#">12/1245</a>	1,510	<b>Available now!</b> Dental office use with four private offices with dedicated plumbing, a kitchenette, break room, and reception area <b>Virtual Tour available at <a href="https://bit.ly/2N3Ajxz">bit.ly/2N3Ajxz</a></b>
<a href="#">12/1240</a>	2,069	<b>Available now!</b> Dental office use with five private offices with dedicated plumbing, two private bathrooms, and break room/staff lounge. <b>Virtual Tour available at <a href="https://bit.ly/2N3Ajxz">bit.ly/2N3Ajxz</a></b>
<a href="#">11/1100</a>	9,455	<b>Available now!</b> Kitchenette, open work area, private office and multiple conference rooms <b>Virtual Tour available at <a href="https://bit.ly/3UX6RMH">bit.ly/3UX6RMH</a></b>
<a href="#">10/1045</a>	1,002	<b>Available 3/1/2027</b> Kitchenette, open work area and one private office.
<a href="#">10/1025</a>	1,373	<b>Available 4/1/2027</b> Kitchenette, open work area, two private offices and one conference room
<a href="#">10/1005</a>	3,024	<b>Available now!</b> Open work area, kitchenette, multiple private offices, multiple conference rooms. <b>Virtual Tour available at <a href="https://bit.ly/2UEbZpy">bit.ly/2UEbZpy</a></b>
<a href="#">8/800</a>	13,852	<b>Available now!</b> Kitchenette, open work area, private office and multiple conference rooms. <b>Virtual Tour available at <a href="https://bit.ly/47sTFXm">bit.ly/47sTFXm</a></b>
<a href="#">5/540</a>	1,291	<b>Available now!</b> Two private offices, conference room, open work area, west facing, kitchenette. Contiguous option with Suite 535 for a total of 5,282 RSF. <b>Virtual Tour available at <a href="https://bit.ly/3fsZgyx">bit.ly/3fsZgyx</a></b>
<a href="#">5/535</a>	3,991	<b>Available now!</b> Warm shell condition, new ceiling/lighting. Contiguous option with Suite 540 for a total of 5,282 RSF. <b>Virtual Tour available at <a href="https://bit.ly/31qUWbS">bit.ly/31qUWbS</a></b>
<a href="#">4/400</a>	11,710	<b>Available now!</b> 15 private office spaces, open work area, kitchenette.
<a href="#">2/210</a>	3,133	<b>Available now!</b> Medical/office space. Contiguous option with Suite 200 for a total of 5,732 RSF.
<a href="#">2/200</a>	2,599	<b>Available now!</b> Kitchenette, open work area. Contiguous option with Suite 210 for a total of 5,732 RSF.



# PUGET SOUND PLAZA

1325 Fourth Avenue  
Seattle, Washington 98101

**Damon McCartney**  
(206) 838-7633  
mccartney@broderickgroup.com

**David Greenwood**  
(206) 838-7635  
greenwood@broderickgroup.com



Broderick Group, Inc.  
10500 NE 8th Street, Suite 900  
Bellevue, WA 98004  
main: (206) 838-5775

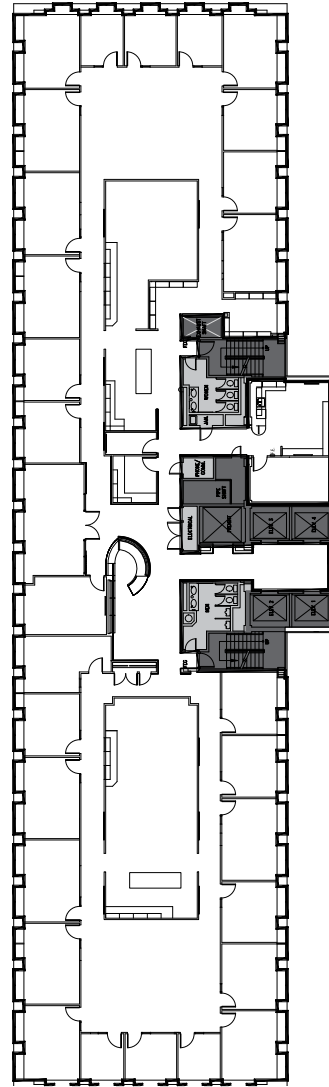
broderickgroup.com

The information contained herein has been given to us by the owner or sources which we deem reliable. We have no reason to doubt its accuracy, but we do not guarantee it. Prospective tenants should carefully verify all information contained herein.

For virtual tour, visit:  
[bit.ly/3S1Uiyc](https://bit.ly/3S1Uiyc)

# SUITE 2000

## 13,630 RSF



## SPACE FEATURES

- » Available now!
- » Kitchenette
- » Open work area
- » Multiple private offices
- » Multiple conference rooms



**METROTRACT**  
SEATTLE



# PUGET SOUND PLAZA

1325 Fourth Avenue  
Seattle, Washington 98101



**Damon McCartney**

(206) 838-7633

mccartney@broderickgroup.com

**David Greenwood**

(206) 838-7635

greenwood@broderickgroup.com

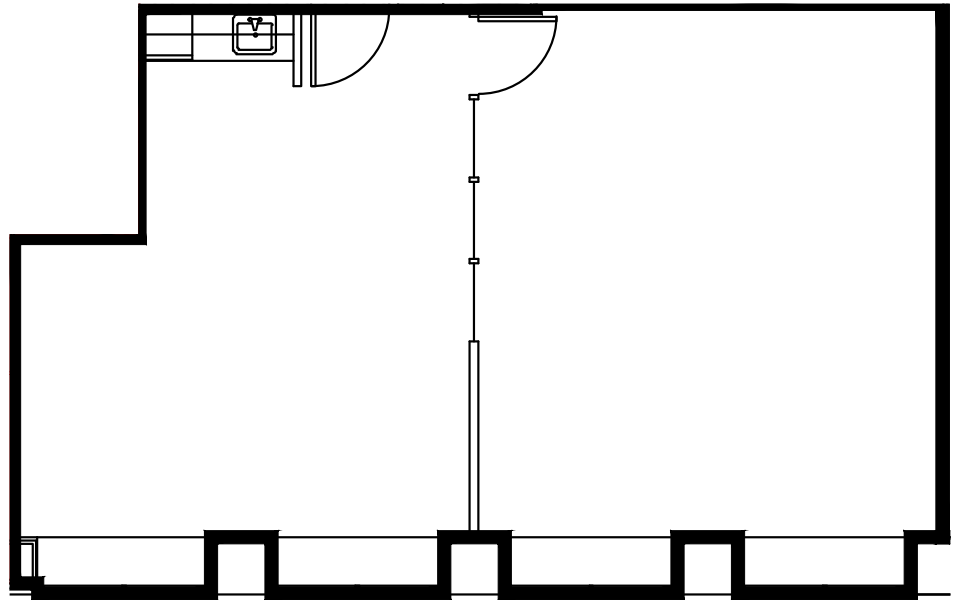


Broderick Group, Inc.  
10500 NE 8th Street, Suite 900  
Bellevue, WA 98004  
main: (206) 838-5775

broderickgroup.com

The information contained herein has been given to us by the owner or sources which we deem reliable. We have no reason to doubt its accuracy, but we do not guarantee it. Prospective tenants should carefully verify all information contained herein.

## SUITE 1945 940 RSF



### SPACE FEATURES

- » Available now!
- » Private Office
- » Open work area
- » Kitchenette
- » Contiguous option with Suite 1940 for a total of 4,933 RSF





# PUGET SOUND PLAZA

1325 Fourth Avenue  
Seattle, Washington 98101

**Damon McCartney**  
(206) 838-7633  
mccartney@broderickgroup.com

**David Greenwood**  
(206) 838-7635  
greenwood@broderickgroup.com

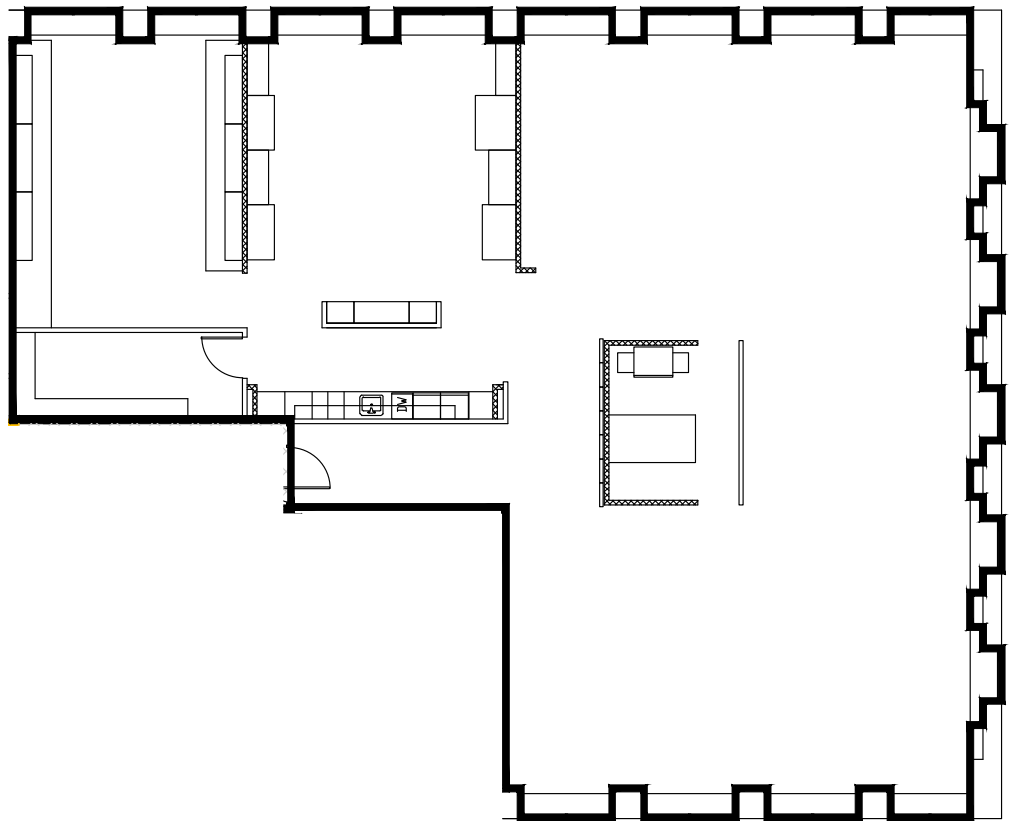


Broderick Group, Inc.  
10500 NE 8th Street, Suite 900  
Bellevue, WA 98004  
main: (206) 838-5775

broderickgroup.com

The information contained herein has been given to us by the owner or sources which we deem reliable. We have no reason to doubt its accuracy, but we do not guarantee it. Prospective tenants should carefully verify all information contained herein.

## SUITE 1940 3,993 RSF



### SPACE FEATURES

- » Available now!
- » Open work area
- » Kitchenette
- » Contiguous option with Suite 1945 for a total of 4,933 RSF





# PUGET SOUND PLAZA

1325 Fourth Avenue  
Seattle, Washington 98101

**Damon McCartney**

(206) 838-7633

mccartney@broderickgroup.com

**David Greenwood**

(206) 838-7635

greenwood@broderickgroup.com



Broderick Group, Inc.  
10500 NE 8th Street, Suite 900  
Bellevue, WA 98004  
main: (206) 838-5775

broderickgroup.com

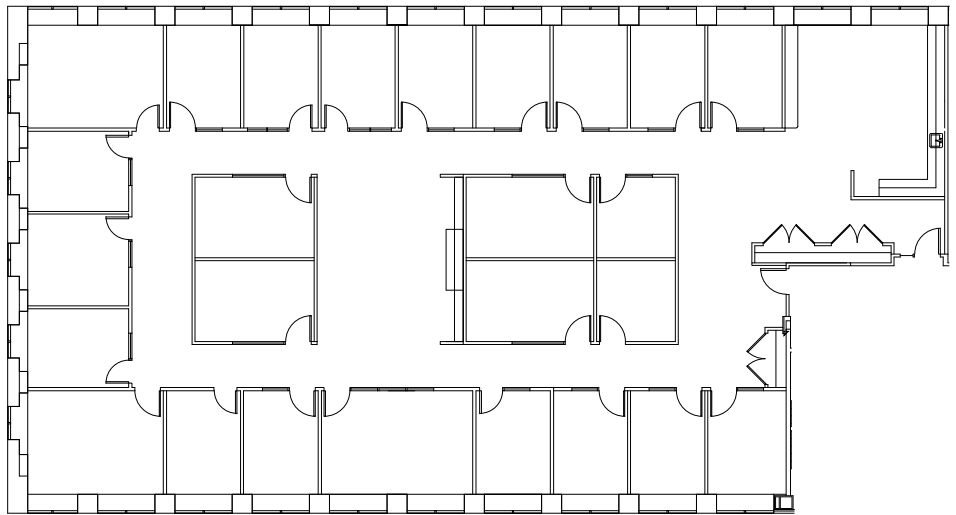
The information contained herein has been given to us by the owner or sources which we deem reliable. We have no reason to doubt its accuracy, but we do not guarantee it. Prospective tenants should carefully verify all information contained herein.

For virtual tour, visit:

[bit.ly/3AXDm75](https://bit.ly/3AXDm75)

# SUITE 1600

# 6,882 RSF



## SPACE FEATURES

- » Available now!
- » Multiple private offices
- » Multiple conference rooms
- » Kitchenette



**METROTRACT**  
SEATTLE



# PUGET SOUND PLAZA

1325 Fourth Avenue  
Seattle, Washington 98101

**Damon McCartney**

(206) 838-7633

mccartney@broderickgroup.com

**David Greenwood**

(206) 838-7635

greenwood@broderickgroup.com



Broderick Group, Inc.  
10500 NE 8th Street, Suite 900  
Bellevue, WA 98004  
main: (206) 838-5775

broderickgroup.com

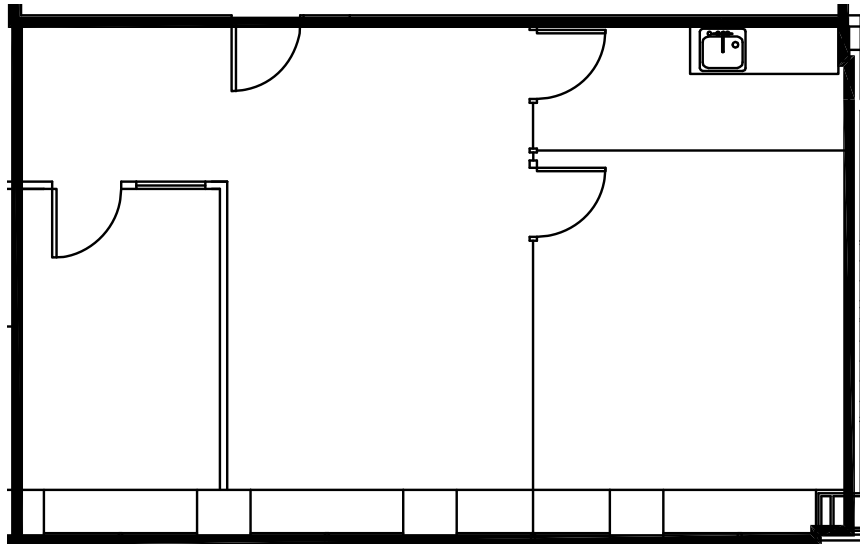
The information contained herein has been given to us by the owner or sources which we deem reliable. We have no reason to doubt its accuracy, but we do not guarantee it. Prospective tenants should carefully verify all information contained herein.

For virtual tour, visit:

[bit.ly/4g91GD8](https://bit.ly/4g91GD8)

# SUITE 1510

# 1,017 RSF



## SPACE FEATURES

- » Available Now!
- » Private offices
- » Open area
- » Conference room



**METROTRACT**  
SEATTLE



# PUGET SOUND PLAZA

1325 Fourth Avenue  
Seattle, Washington 98101

**Damon McCartney**

(206) 838-7633

mccartney@broderickgroup.com

**David Greenwood**

(206) 838-7635

greenwood@broderickgroup.com

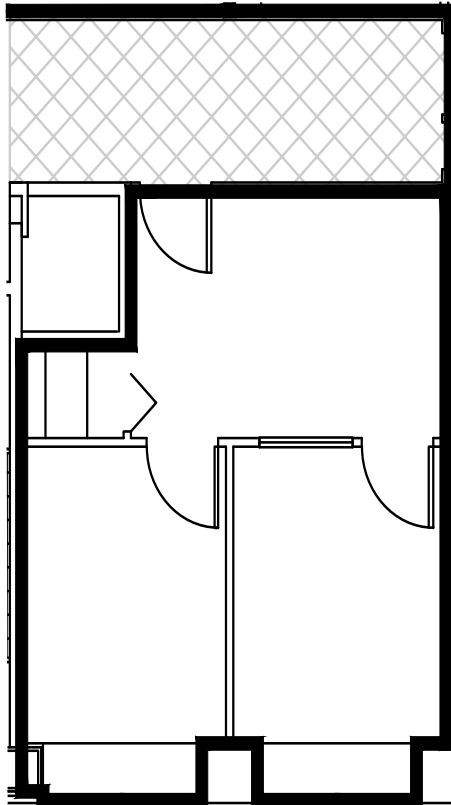


Broderick Group, Inc.  
10500 NE 8th Street, Suite 900  
Bellevue, WA 98004  
main: (206) 838-5775

broderickgroup.com

The information contained herein has been given to us by the owner or sources which we deem reliable. We have no reason to doubt its accuracy, but we do not guarantee it. Prospective tenants should carefully verify all information contained herein.

## SUITE 1345 456 RSF



### SPACE FEATURES

» Available 7/1/2026





# PUGET SOUND PLAZA

1325 Fourth Avenue  
Seattle, Washington 98101

**Damon McCartney**  
(206) 838-7633  
mccartney@broderickgroup.com

**David Greenwood**  
(206) 838-7635  
greenwood@broderickgroup.com

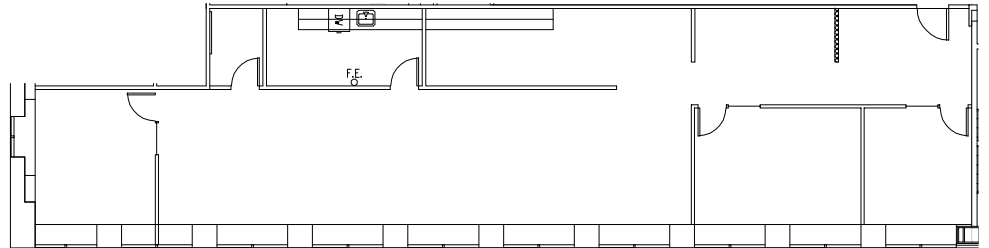


Broderick Group, Inc.  
10500 NE 8th Street, Suite 900  
Bellevue, WA 98004  
main: (206) 838-5775

broderickgroup.com

The information contained herein has been given to us by the owner or sources which we deem reliable. We have no reason to doubt its accuracy, but we do not guarantee it. Prospective tenants should carefully verify all information contained herein.

## SUITE 1305 2,380 RSF



### SPACE FEATURES

- » Available now!
- » Kitchenette
- » Open work area
- » Private office
- » Multiple conference rooms



**METROTRACT**  
SEATTLE



# PUGET SOUND PLAZA

1325 Fourth Avenue  
Seattle, Washington 98101

**Damon McCartney**  
(206) 838-7633  
mccartney@broderickgroup.com

**David Greenwood**  
(206) 838-7635  
greenwood@broderickgroup.com



Broderick Group, Inc.  
10500 NE 8th Street, Suite 900  
Bellevue, WA 98004  
main: (206) 838-5775

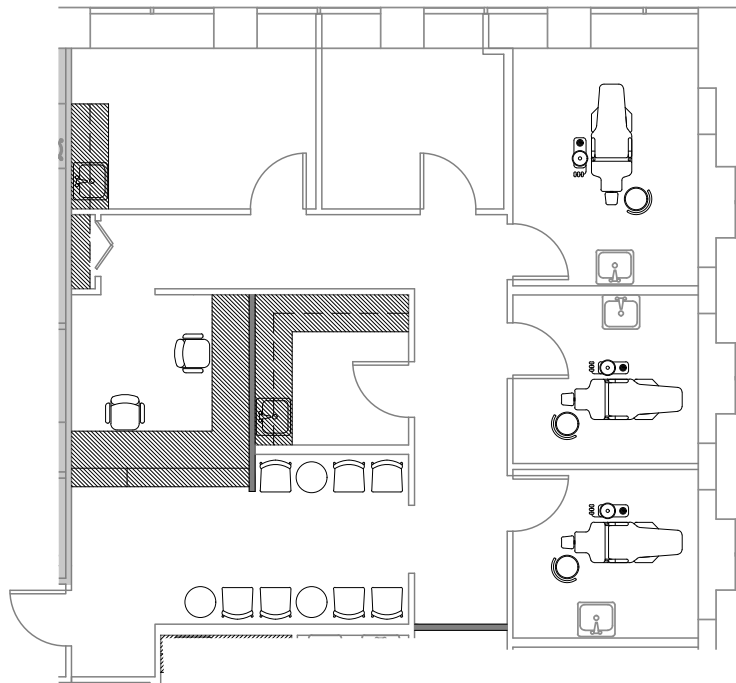
broderickgroup.com

The information contained herein has been given to us by the owner or sources which we deem reliable. We have no reason to doubt its accuracy, but we do not guarantee it. Prospective tenants should carefully verify all information contained herein.

For virtual tour, visit:  
[bit.ly/2N3Ajxz](https://bit.ly/2N3Ajxz)

# SUITE 1245

## 1,510 RSF



## SPACE FEATURES

- » Available now!
- » Concept plan
- » Dental/office use
- » Four private offices with dedicated plumbing
- » Kitchenette
- » Break room
- » Reception area



**METROTRACT**  
SEATTLE



# PUGET SOUND PLAZA

1325 Fourth Avenue  
Seattle, Washington 98101

**Damon McCartney**  
(206) 838-7633  
mccartney@broderickgroup.com

**David Greenwood**  
(206) 838-7635  
greenwood@broderickgroup.com



Broderick Group, Inc.  
10500 NE 8th Street, Suite 900  
Bellevue, WA 98004  
main: (206) 838-5775

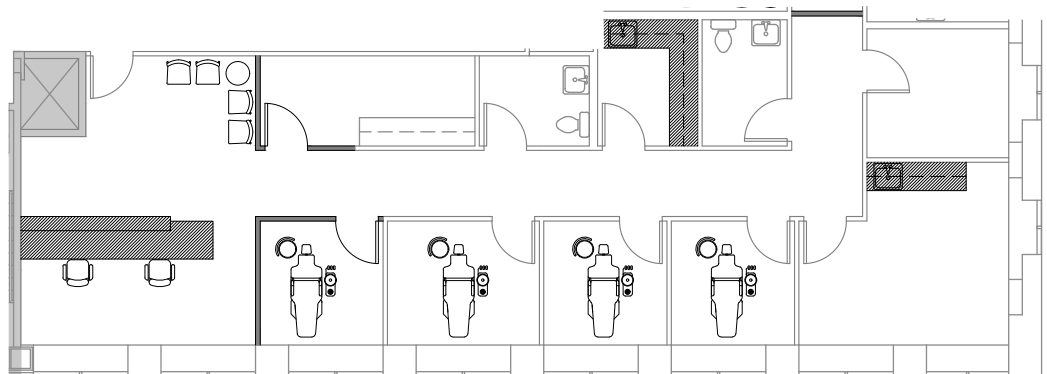
broderickgroup.com

The information contained herein has been given to us by the owner or sources which we deem reliable. We have no reason to doubt its accuracy, but we do not guarantee it. Prospective tenants should carefully verify all information contained herein.

For virtual tour, visit:  
[bit.ly/2N3Ajxz](https://bit.ly/2N3Ajxz)

# SUITE 1240

## 2,069 RSF



## SPACE FEATURES

- » Available now!
- » Concept plan
- » Dental/office use
- » Five private offices with dedicated plumbing
- » Two private bathrooms
- » Break room/Staff lounge
- » Kitchenette



**METROTRACT**  
SEATTLE



# PUGET SOUND PLAZA

1325 Fourth Avenue  
Seattle, Washington 98101

**Damon McCartney**  
(206) 838-7633  
mccartney@broderickgroup.com

**David Greenwood**  
(206) 838-7635  
greenwood@broderickgroup.com



Broderick Group, Inc.  
10500 NE 8th Street, Suite 900  
Bellevue, WA 98004  
main: (206) 838-5775

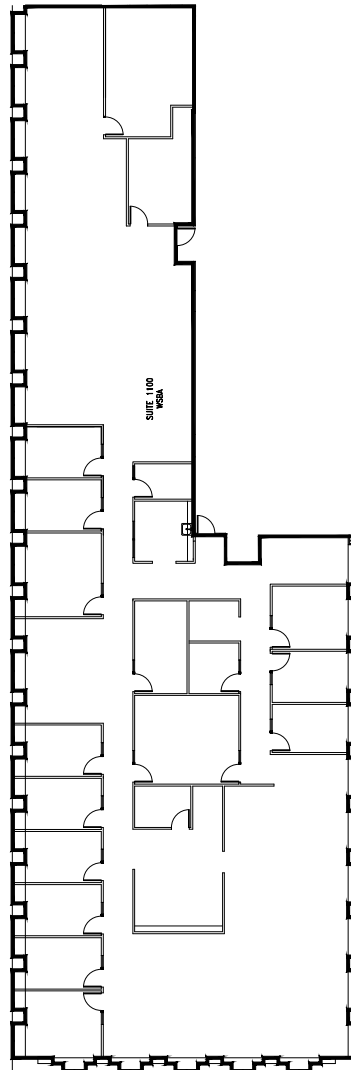
broderickgroup.com

The information contained herein has been given to us by the owner or sources which we deem reliable. We have no reason to doubt its accuracy, but we do not guarantee it. Prospective tenants should carefully verify all information contained herein.

For virtual tour, visit:  
[bit.ly/3UX6RMH](https://bit.ly/3UX6RMH)

# SUITE 1100

## 9,455 RSF



## SPACE FEATURES

- » Available now!
- » Kitchenette
- » Open work area
- » Multiple private offices
- » Multiple conference rooms



**METROTRACT**  
SEATTLE



# PUGET SOUND PLAZA

1325 Fourth Avenue  
Seattle, Washington 98101

**Damon McCartney**

(206) 838-7633

mccartney@broderickgroup.com

**David Greenwood**

(206) 838-7635

greenwood@broderickgroup.com

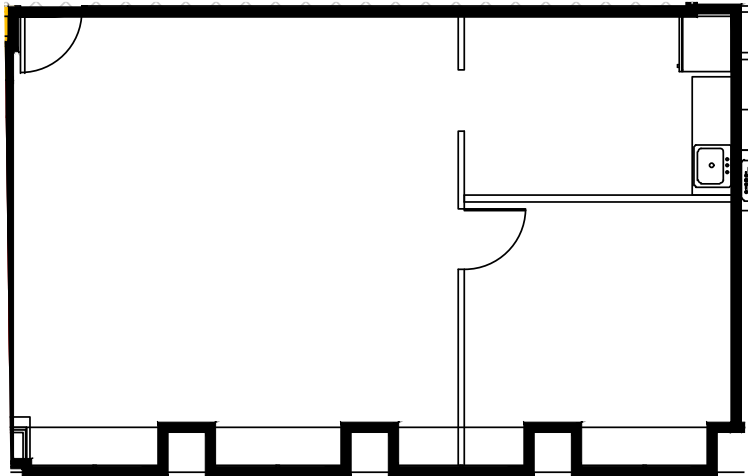


Broderick Group, Inc.  
10500 NE 8th Street, Suite 900  
Bellevue, WA 98004  
main: (206) 838-5775

broderickgroup.com

The information contained herein has been given to us by the owner or sources which we deem reliable. We have no reason to doubt its accuracy, but we do not guarantee it. Prospective tenants should carefully verify all information contained herein.

## SUITE 1045 1,002 RSF



### SPACE FEATURES

- » Available 3/1/2027
- » Kitchenette
- » Open work area
- » One private office



**METROTRACT**  
SEATTLE



# PUGET SOUND PLAZA

1325 Fourth Avenue  
Seattle, Washington 98101

**Damon McCartney**

(206) 838-7633

mccartney@broderickgroup.com

**David Greenwood**

(206) 838-7635

greenwood@broderickgroup.com

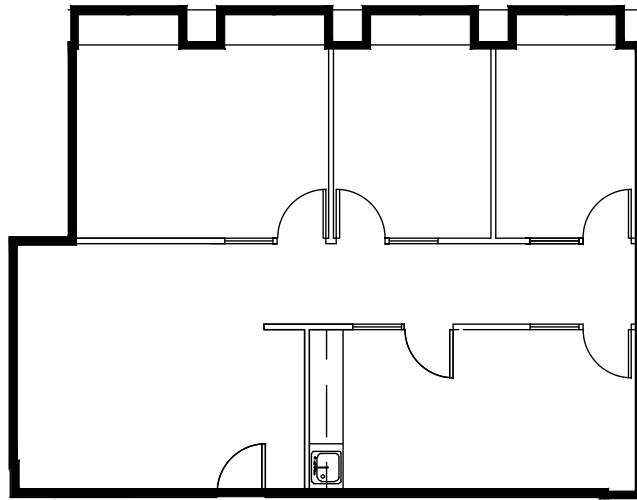


Broderick Group, Inc.  
10500 NE 8th Street, Suite 900  
Bellevue, WA 98004  
main: (206) 838-5775

broderickgroup.com

The information contained herein has been given to us by the owner or sources which we deem reliable. We have no reason to doubt its accuracy, but we do not guarantee it. Prospective tenants should carefully verify all information contained herein.

## SUITE 1025 1,373 RSF



### SPACE FEATURES

- » Available 4/1/2027
- » Kitchenette
- » Open work area
- » Two private offices
- » One conference room



**METROTRACT**  
SEATTLE



# PUGET SOUND PLAZA

1325 Fourth Avenue  
Seattle, Washington 98101

**Damon McCartney**  
(206) 838-7633  
mccartney@broderickgroup.com

**David Greenwood**  
(206) 838-7635  
greenwood@broderickgroup.com



Broderick Group, Inc.  
10500 NE 8th Street, Suite 900  
Bellevue, WA 98004  
main: (206) 838-5775

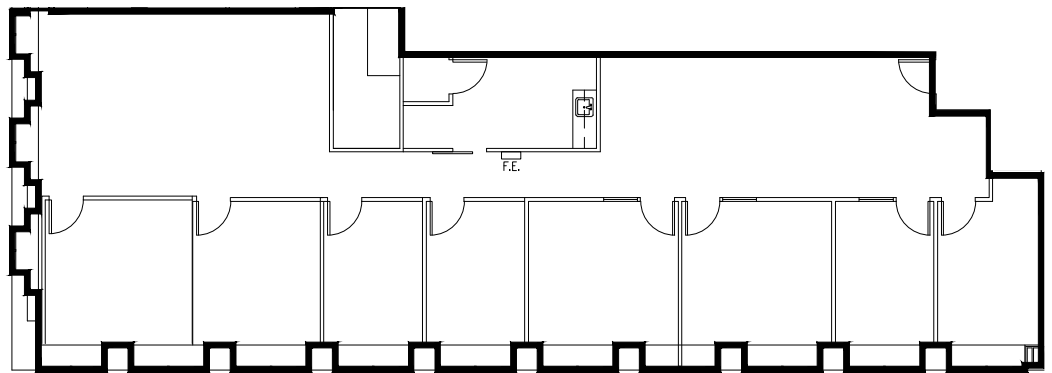
broderickgroup.com

The information contained herein has been given to us by the owner or sources which we deem reliable. We have no reason to doubt its accuracy, but we do not guarantee it. Prospective tenants should carefully verify all information contained herein.

For virtual tour, visit:  
[bit.ly/2UEbZpy](https://bit.ly/2UEbZpy)

# SUITE 1005

## 3,024 RSF



## SPACE FEATURES

- » Available now!
- » Kitchenette
- » Open work area
- » Multiple private offices
- » Multiple conference rooms



**METROTRACT**  
SEATTLE



# PUGET SOUND PLAZA

1325 Fourth Avenue  
Seattle, Washington 98101

**Damon McCartney**  
(206) 838-7633  
mccartney@broderickgroup.com

**David Greenwood**  
(206) 838-7635  
greenwood@broderickgroup.com



Broderick Group, Inc.  
10500 NE 8th Street, Suite 900  
Bellevue, WA 98004  
main: (206) 838-5775

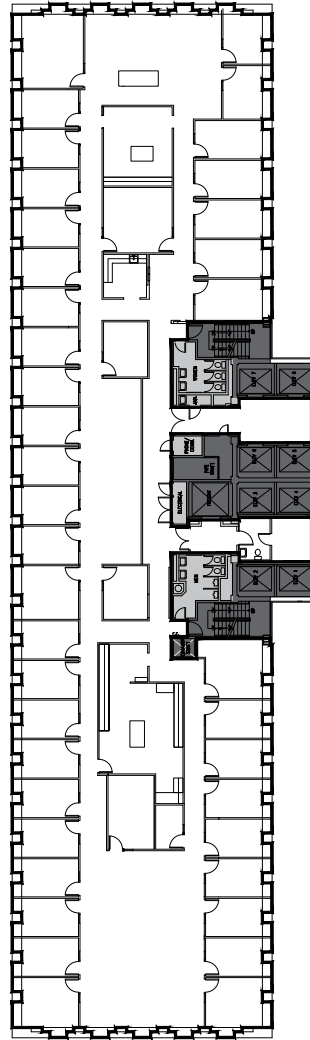
broderickgroup.com

The information contained herein has been given to us by the owner or sources which we deem reliable. We have no reason to doubt its accuracy, but we do not guarantee it. Prospective tenants should carefully verify all information contained herein.

For virtual tour, visit:  
[bit.ly/47sTFXm](https://bit.ly/47sTFXm)

# SUITE 800

## 13,852 RSF



## SPACE FEATURES

- » Available now!
- » Kitchenette
- » Open work area
- » Multiple private offices
- » Multiple conference rooms



**METROTRACT**  
SEATTLE



# PUGET SOUND PLAZA

1325 Fourth Avenue  
Seattle, Washington 98101

**Damon McCartney**

(206) 838-7633

mccartney@broderickgroup.com

**David Greenwood**

(206) 838-7635

greenwood@broderickgroup.com



Broderick Group, Inc.  
10500 NE 8th Street, Suite 900  
Bellevue, WA 98004  
main: (206) 838-5775

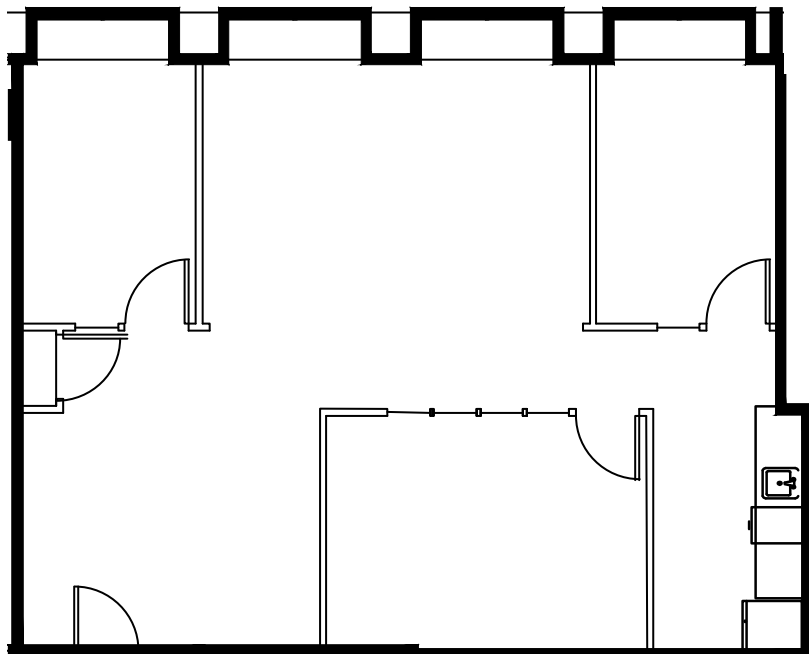
broderickgroup.com

The information contained herein has been given to us by the owner or sources which we deem reliable. We have no reason to doubt its accuracy, but we do not guarantee it. Prospective tenants should carefully verify all information contained herein.

For virtual tour, visit:  
[bit.ly/3fsZgyx](https://bit.ly/3fsZgyx)

# SUITE 540

## 1,291 RSF



## SPACE FEATURES

- » Available now!
- » Two private offices
- » Open work area
- » Conference room
- » West facing
- » Kitchenette
- » Contiguous option with Suite 535 for a total of 5,282 RSF



**METROTRACT**  
SEATTLE



# PUGET SOUND PLAZA

1325 Fourth Avenue  
Seattle, Washington 98101

**Damon McCartney**  
(206) 838-7633  
mccartney@broderickgroup.com

**David Greenwood**  
(206) 838-7635  
greenwood@broderickgroup.com



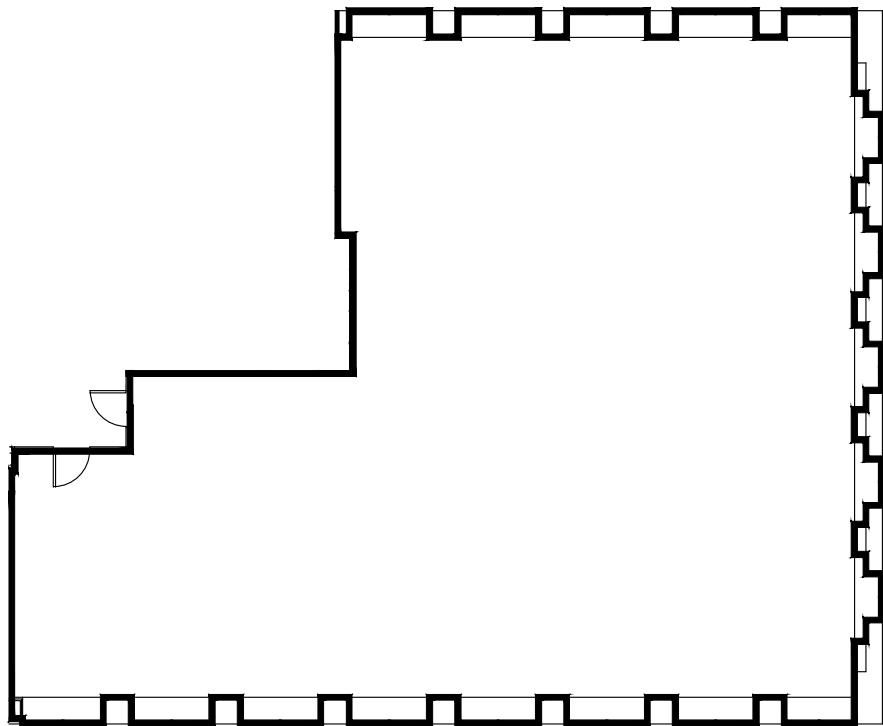
Broderick Group, Inc.  
10500 NE 8th Street, Suite 900  
Bellevue, WA 98004  
main: (206) 838-5775

broderickgroup.com

The information contained herein has been given to us by the owner or sources which we deem reliable. We have no reason to doubt its accuracy, but we do not guarantee it. Prospective tenants should carefully verify all information contained herein.

For virtual tour, visit:  
[bit.ly/31qUWbS](https://bit.ly/31qUWbS)

SUITE 535  
3,991 RSF



## SPACE FEATURES

- » Available now!
- » Warm shell condition
- » New ceiling/lighting
- » Contiguous option with Suite 540 for a total of 5,282 RSF



METROTRACT  
SEATTLE



# PUGET SOUND PLAZA

1325 Fourth Avenue  
Seattle, Washington 98101

**Damon McCartney**  
(206) 838-7633  
mccartney@broderickgroup.com

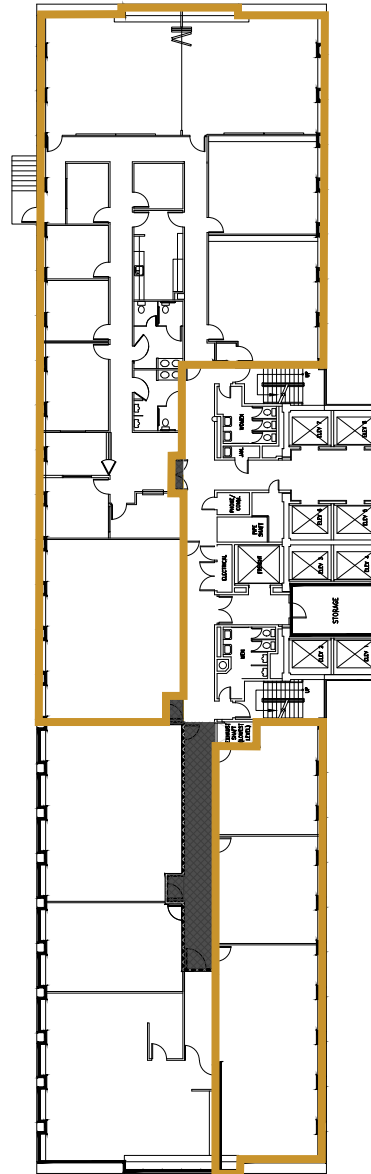
**David Greenwood**  
(206) 838-7635  
greenwood@broderickgroup.com



Broderick Group, Inc.  
10500 NE 8th Street, Suite 900  
Bellevue, WA 98004  
main: (206) 838-5775

broderickgroup.com

The information contained herein has been given to us by the owner or sources which we deem reliable. We have no reason to doubt its accuracy, but we do not guarantee it. Prospective tenants should carefully verify all information contained herein.



## SUITE 400 11,710 RSF



### SPACE FEATURES

- » Available now!
- » 15 Office spaces
- » Kitchenette
- » Open work area



**METROTRACT**  
SEATTLE



# PUGET SOUND PLAZA

1325 Fourth Avenue  
Seattle, Washington 98101

**Damon McCartney**

(206) 838-7633

mccartney@broderickgroup.com

**David Greenwood**

(206) 838-7635

greenwood@broderickgroup.com

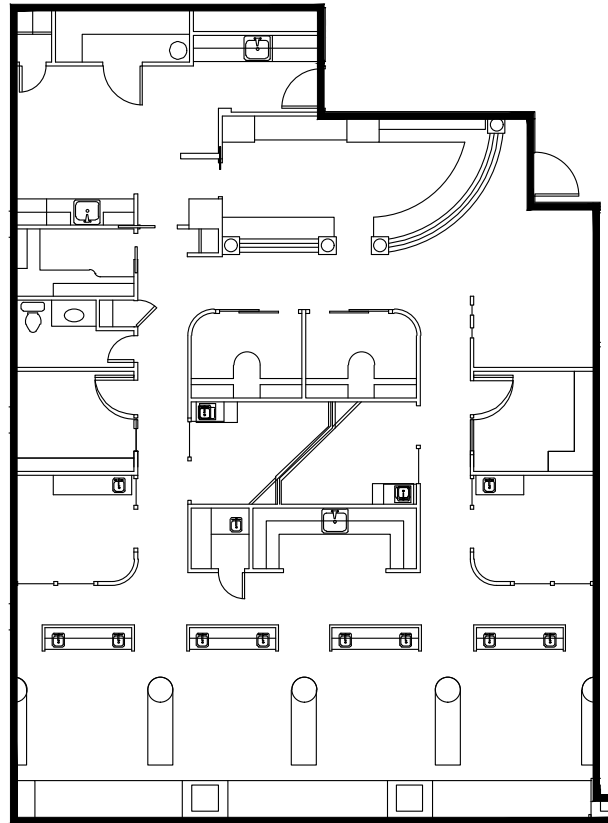


Broderick Group, Inc.  
10500 NE 8th Street, Suite 900  
Bellevue, WA 98004  
main: (206) 838-5775

broderickgroup.com

The information contained herein has been given to us by the owner or sources which we deem reliable. We have no reason to doubt its accuracy, but we do not guarantee it. Prospective tenants should carefully verify all information contained herein.

## SUITE 210 3,133 RSF



### SPACE FEATURES

- » Available now!
- » Medical/ Office Space
- » Contiguous option with Suite 200 for a total of 5,732 RSF





# PUGET SOUND PLAZA

1325 Fourth Avenue  
Seattle, Washington 98101

**Damon McCartney**

(206) 838-7633

mccartney@broderickgroup.com

**David Greenwood**

(206) 838-7635

greenwood@broderickgroup.com

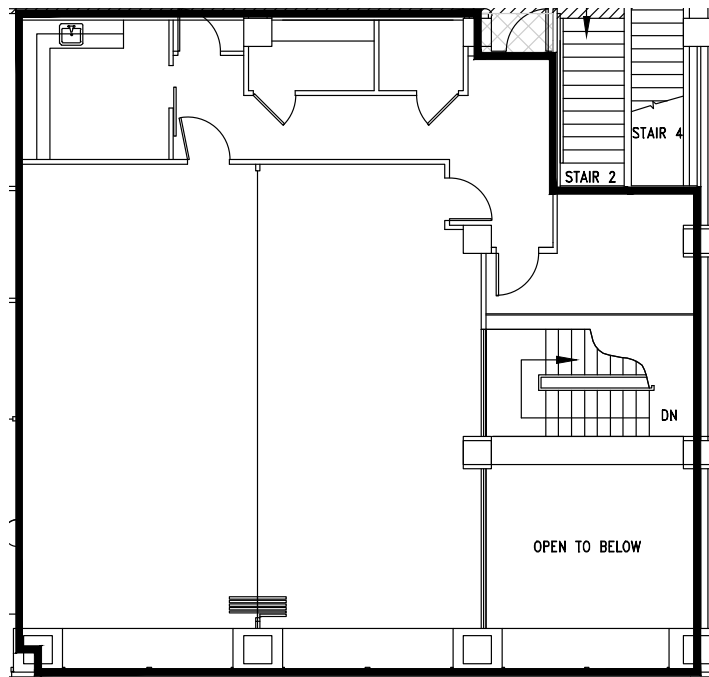


Broderick Group, Inc.  
10500 NE 8th Street, Suite 900  
Bellevue, WA 98004  
main: (206) 838-5775

broderickgroup.com

The information contained herein has been given to us by the owner or sources which we deem reliable. We have no reason to doubt its accuracy, but we do not guarantee it. Prospective tenants should carefully verify all information contained herein.

## SUITE 200 2,599 RSF



### SPACE FEATURES

- » Available now!
- » Kitchenette
- » Open work area
- » Contiguous option with Suite 210 for a total of 5,732 RSF





**METROTRACT**

SEATTLE

**BRODERICK**  
• GROUP •

Broderick Group, Inc.  
10500 NE 8th Street, Suite 900  
Bellevue, WA 98004  
main: (206) 838-5775

[broderickgroup.com](http://broderickgroup.com)

**Damon McCartney**  
(206) 838-7633

[mccartney@broderickgroup.com](mailto:mccartney@broderickgroup.com)

**David Greenwood**  
(206) 838-7635

[greenwood@broderickgroup.com](mailto:greenwood@broderickgroup.com)