


HIGH QUALITY FLEX SPACE FOR LEASE



 3275-3325 E Quad
Park Court, Post Falls,
ID 83854

Offered at
\$1.10 PSF, NNN
Est NNN at \$0.20 PSF

AIN: 316648

PERFECT FOR A SMALL BUSINESS

Units include a private office area with upgraded lighting, electric heat and air conditioning, ADA bathroom, utility sink, open insulated warehouse with gas stubbed for heat, LED lighting, 200 Amp single phase power, 16x14 foot roll up doors, windows for natural light and new epoxy floors. Excellent location in Post Falls. Zoned CCS. Many other upgrades on the exterior and interior.

Suite 3325 - 102 is 2,640 sqft
Suite 3325 - 103 is 2,640 sqft

 **CRAIG HUNTER**

208.929.2929
hunter@ccim.net



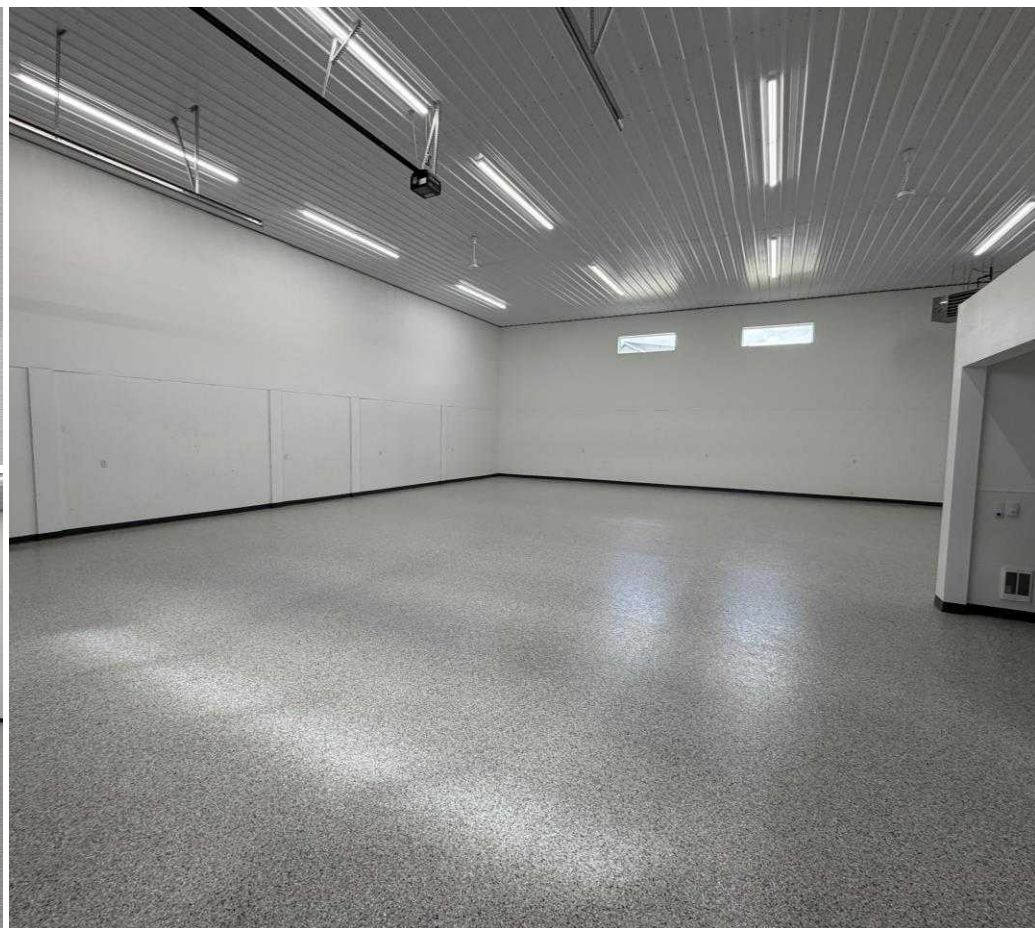
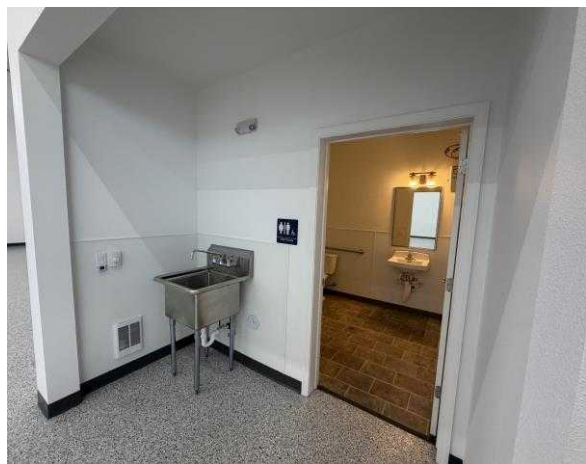
CCIMTEAM.COM



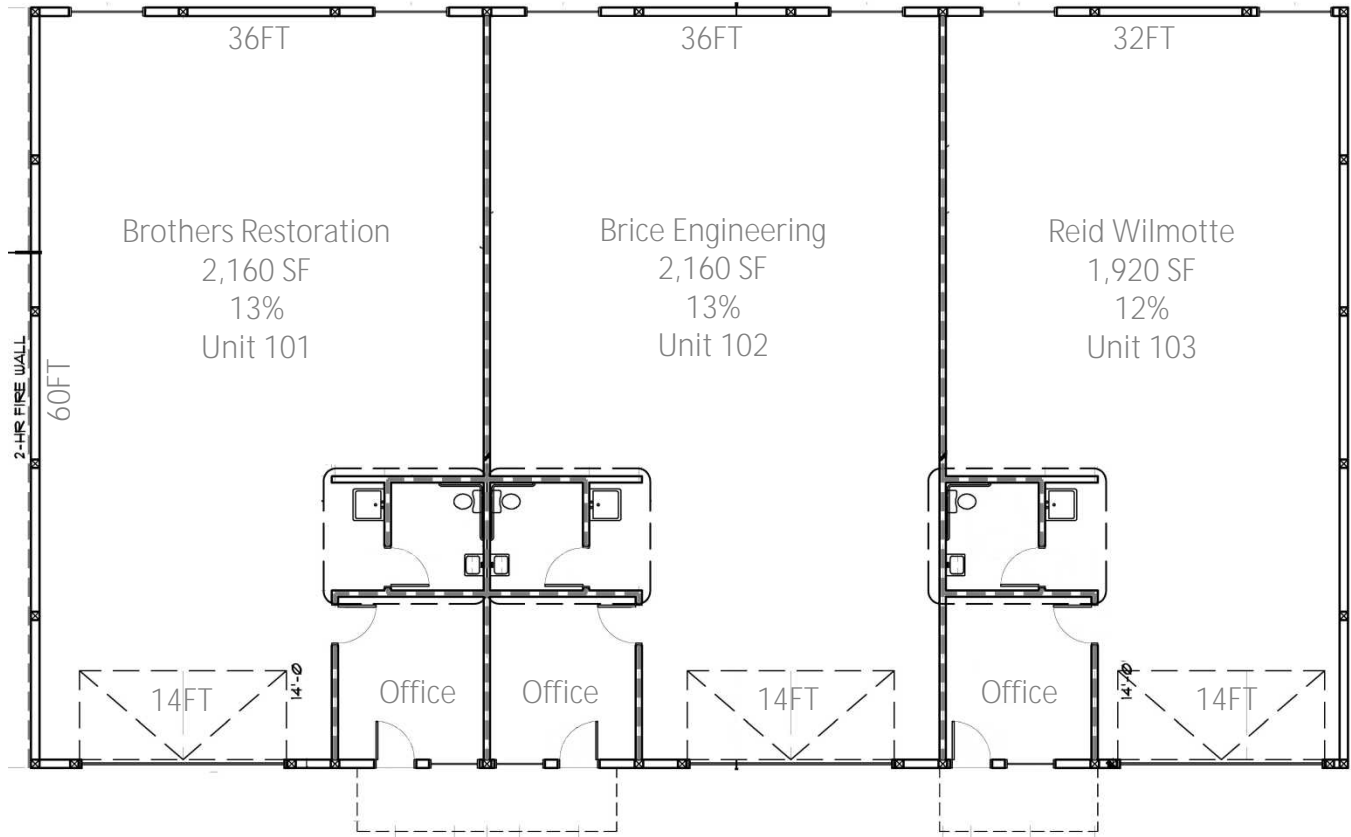
**KIEMLE
HAGOOD**

Data is deemed reliable, no warranties or representations expressed or implied. Broker not responsible for changes, errors, omissions, or prior sale without notice. All critical measurements shall be done by Lessee or Buyer.

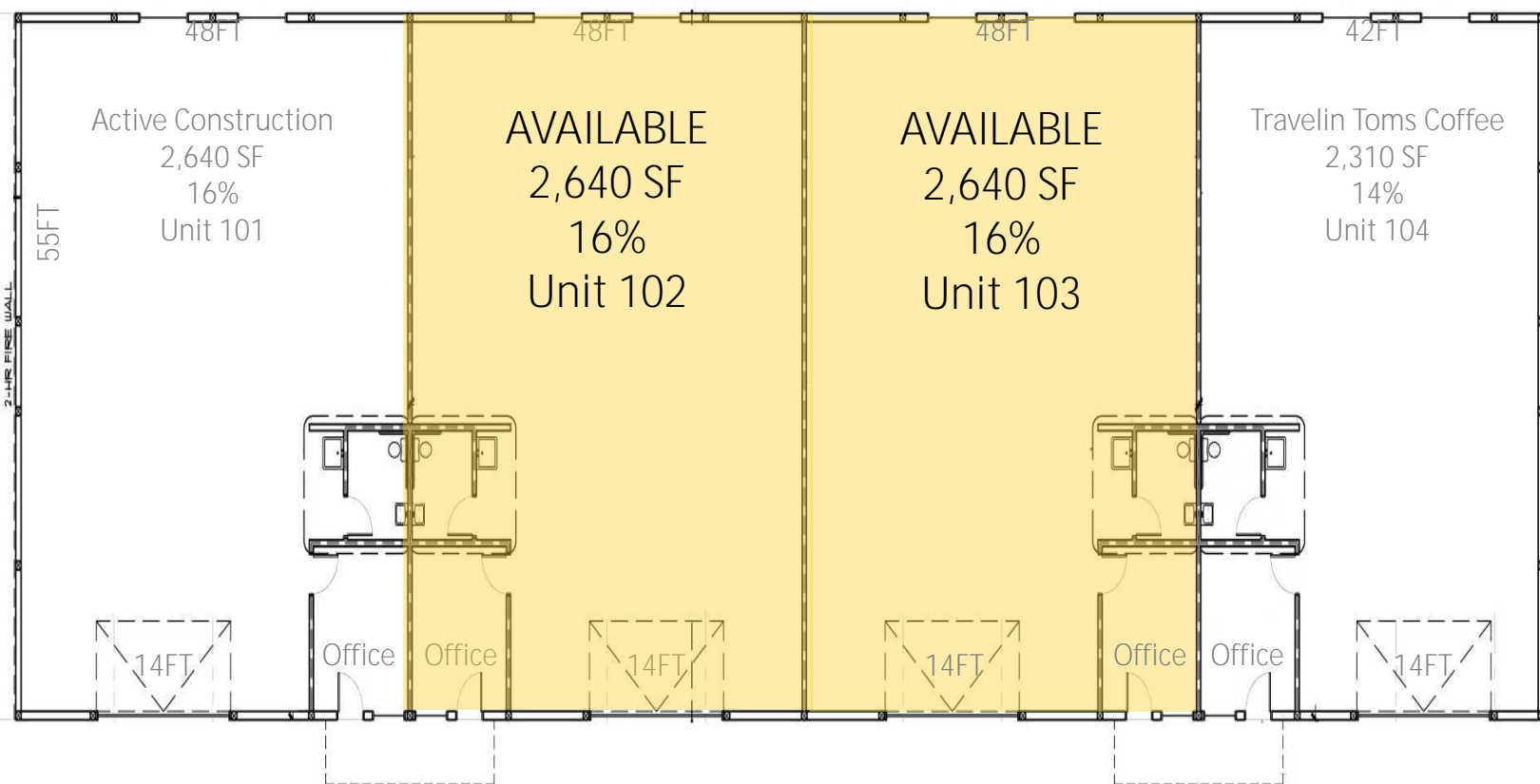
1579 Riverstone Drive, #102
Coeur d'Alene, ID 83814



East Floor Plan: 3275 East Quad Park Court



East Floor Plan: 3325 East Quad Park Court



CRAIG HUNTER

208.929.2929 hunter@ccim.net



CCIMTEAM.COM

**KIEMLE
HAGOOD**

12th Avenue



Reid Wilmotte

Brothers Restoration
Scout Distribution
Travellin Toms Coffee

Quad Park
Office Suites

Quad Park Court



Cecil Road

GW
Electric



Mullan Avenue



Great Clips®

Allstate
Fresh Mexican Grill
Blown Away Salon
Massage
PF Hearing Aid Center

