

# DENTAL OFFICE FOR LEASE

## Uplake Dental Center

5701 NE Bothell Way, Kenmore, WA 98028



### OFFICE SPACE FOR LEASE

Suite 8 | 855 SF

- ◆ Rate: \$16.00/RSF, plus NNN
- ◆ NNN: \$13.50/RSF
- ◆ Available Immediately



FOR LEASE

# Uplake Dental Center

SUITE	SIZE	AVAILABLE	LEASE RATE	LEASE TYPE	NNN RATE
8	855 SF	Immediately	\$16.00/RSF	NNN	\$13.50/RSF

## PROPERTY HIGHLIGHTS

- Located on SR-522
- Prominent Monument Signage
- 5.0 Parking Stalls per 1,000 RSF
- Plentiful Amenities Nearby
- Near Burke Gilman Trail



Building Signage

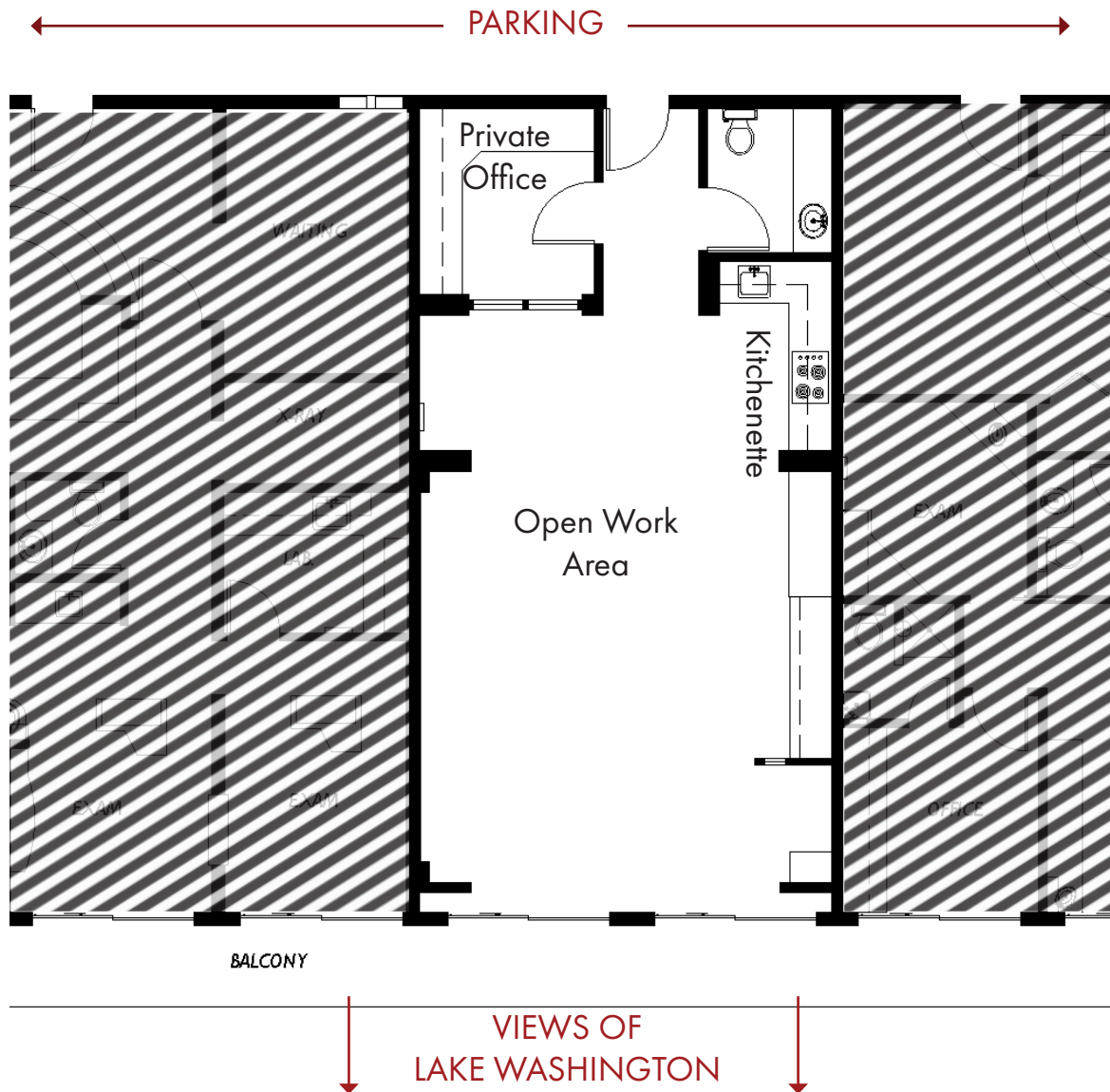


FOR LEASE

# Floor Plans

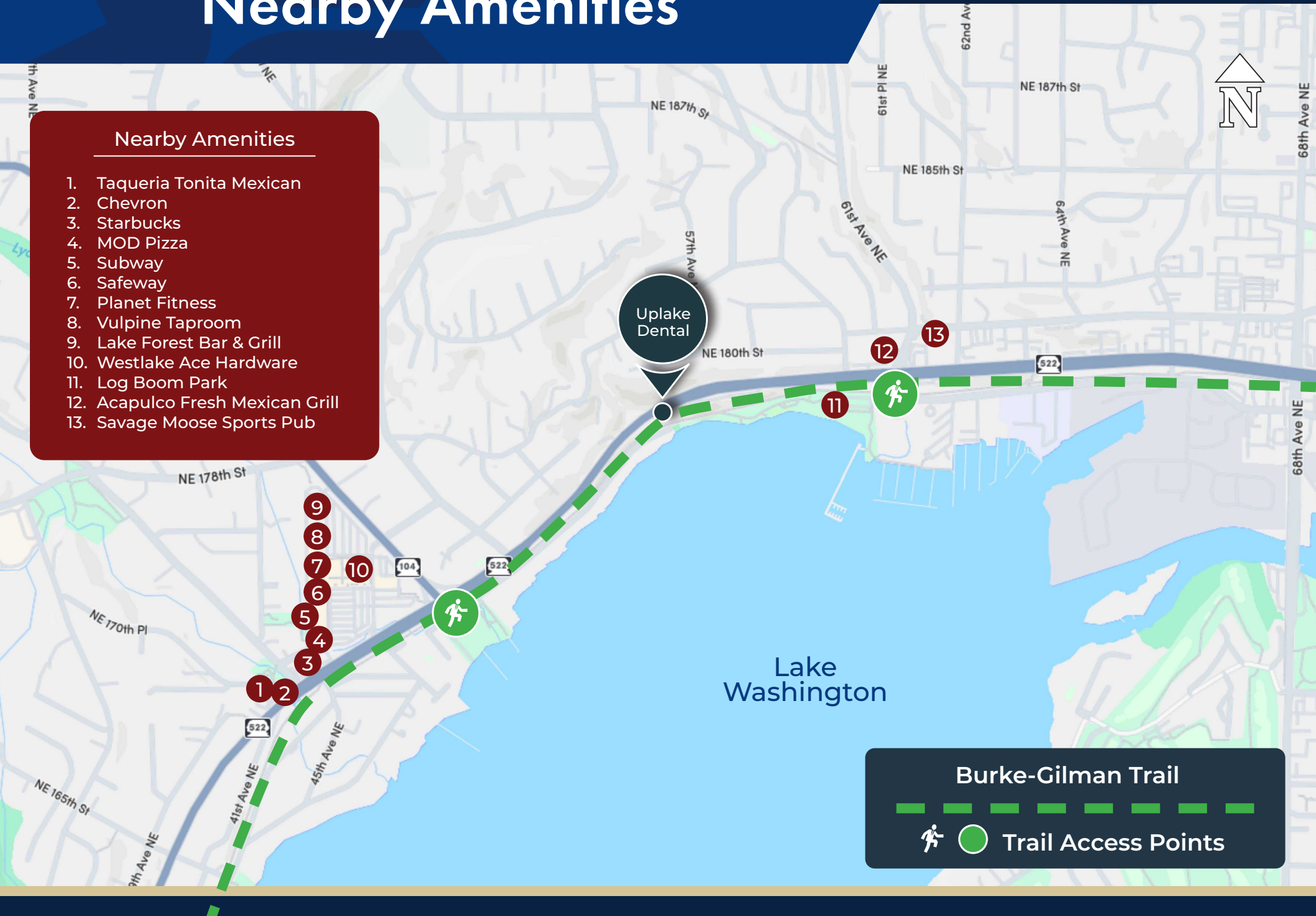
## Suite 8 | 855 RSF

- \$1,140.00/mo, plus NNN
- NNN: \$962.00/mo
- Excellent Views of Lake Washington
- Grade Level Entrance
- Exterior Suite Entrance



# Nearby Amenities

- Nearby Amenities**
- 1. Taqueria Tonita Mexican
  - 2. Chevron
  - 3. Starbucks
  - 4. MOD Pizza
  - 5. Subway
  - 6. Safeway
  - 7. Planet Fitness
  - 8. Vulpine Taproom
  - 9. Lake Forest Bar & Grill
  - 10. Westlake Ace Hardware
  - 11. Log Boom Park
  - 12. Acapulco Fresh Mexican Grill
  - 13. Savage Moose Sports Pub



**Burke-Gilman Trail**

**Trail Access Points**

# Uplake Dental Center

5701 NE BOTHELL WAY | KENMORE, WA 98028

DAN KREKEL CCIM  
Senior Vice President  
+1 425 586 4655  
dkrekel@leibsohn.com



THE INFORMATION CONTAINED HEREIN HAS BEEN RECEIVED FROM SOURCES WE DEEM RELIABLE. WHILE WE HAVE NO REASON TO DOUBT ITS ACCURACY, WE DO NOT GUARANTEE IT. YOU ARE ADVISED TO INDEPENDENTLY VERIFY ALL INFORMATION.

COPYRIGHT Leibsohn & Company