

FOR  
LEASE

# Southcenter South Industrial Park

Cascade B: 18436 Cascade Ave S, Ste 140, Tukwila, WA



## 16,611 SF Available

- 2,557 SF first floor of office
- 1,646 SF mezzanine
- 2 dock high doors – 1 pit leveler, 1 edge of dock leveler
- 1 grade level door
- 24' clear height
- Wet sprinkler system
- 200 amps
- LED lighting
- 105' truck court
- Column spacing: 50' x 35'
- Space dimensions: 188'8" x 74'6"
- Available now



**Matt McGregor**, MS SCM, SIOR  
+1 206 624 7401  
matt.mcgregor@colliers.com

**Bill Condon**, SIOR  
+1 206 235 9732  
bill.condon@colliers.com

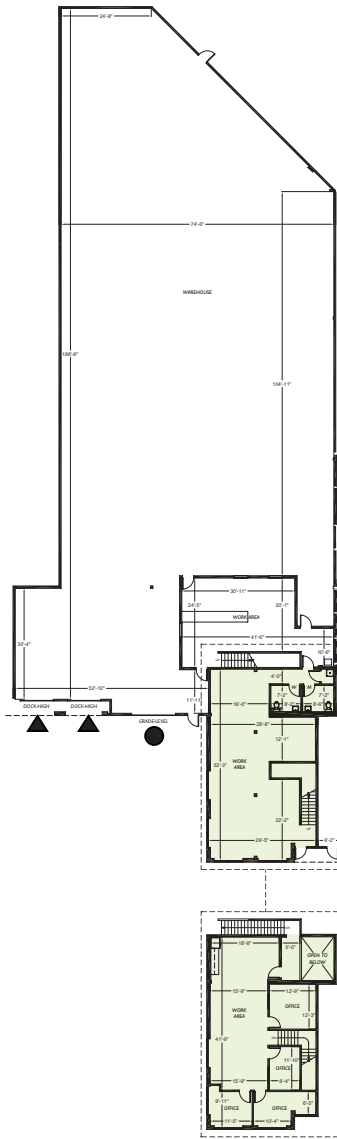
This information contained herein was obtained from sources deemed reliable and is believed to be true. It has not been verified and as such, cannot be warranted nor form any part of any future contract.

**FOR  
LEASE**

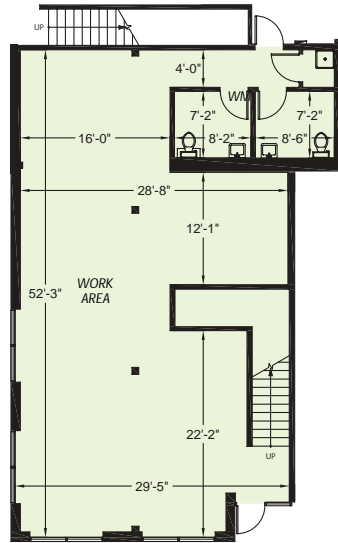
# Southcenter South Industrial Park

Cascade B: 18436 Cascade Ave S, Ste 140, Tukwila, WA

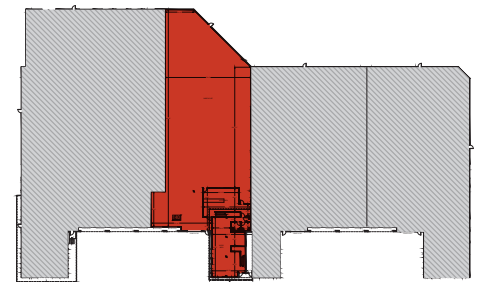
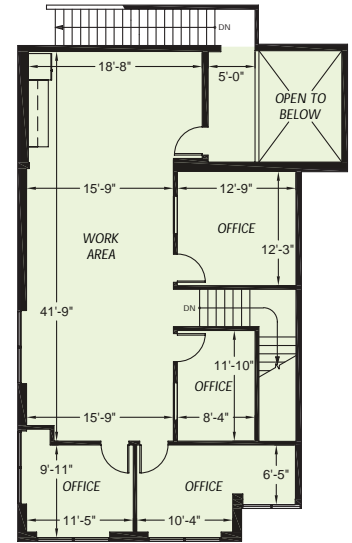
## Floor Plan



## Office Plan



## Mezzanine



### Legend

- ▲ Dock-high door
- Grade-level door

## Location Highlights

**±5 miles**  
to SeaTac Airport

**±14 miles**  
to Downtown Seattle

**±16 miles**  
to Port of Seattle

**±20 miles**  
to Port of Tacoma



**Matt McGregor**, MS SCM, SIOR  
+1 206 624 7401  
matt.mcgregor@colliers.com

**Bill Condon**, SIOR  
+1 206 235 9732  
bill.condon@colliers.com

This information contained herein was obtained from sources deemed reliable and is believed to be true. It has not been verified and as such, cannot be warranted nor form any part of any future contract.