

FOR LEASE

CHASE BANK BUILDING

601 W Main Avenue | Spokane, WA 99201



ANDY BUTLER, CCIM

509.385.9121

andy.butler@kiemlehagood.com

KIEMLEHAGOOD

PROPERTY OVERVIEW

CHASE BANK BUILDING FOR LEASE

One of Downtown Spokane's most recognizable addresses, the Chase Bank Building features Class A office layouts and high-visibility Main Avenue retail frontage available for lease. Located in the heart of Spokane's central business district with direct access to the Skywalk system and walkable proximity to shopping, dining, parks, and entertainment. Flexible suite configurations allow spaces to be tailored to a wide range of businesses. Tenant improvements, parking, building amenities, and negotiable lease terms are available now. Contact listing agent for a tour.

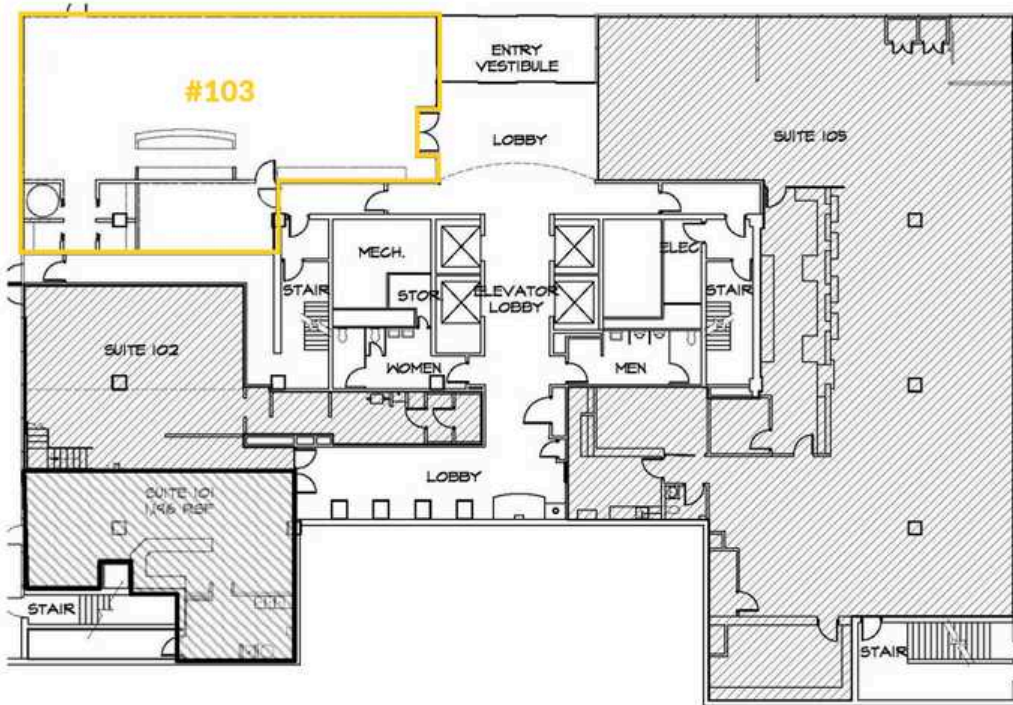


PROPERTY HIGHLIGHTS

- Secured access building common areas, floors & tenant suites
- Steps away from [Riverpark Square](#), [Riverfront Park](#), [The Spokane Arena](#), [The Podium](#), and [One Spokane Stadium](#)
- Connected via skywalk to covered parking (Parkade) with discounted monthly rates available
- Curbside access to the [STA City Line](#), skywalk connection to STA Downtown Plaza
- Building conference rooms, fitness center and showers
- Onsite property management
- Jimmy John's and Thomas Hammer on street level
- Flexible office and retail opportunities with customizable build-outs
- Surrounded by restaurants, retail, and daily amenities

AVAILABLE SPACE

Location	Type	Rentable Square Feet
Lower Level	Office	± 4,899 RSF
Ground Floor	Retail	± 2,401 RSF
2nd Floor	Office / Retail	± 755 - ± 2,833 RSF
3rd Floor	Office (patio available)	± 1,500 - ± 4,800 RSF
5th Floor	Office	± 6,247 RSF
6th Floor	Office	± 1,200 - 4,500 RSF
7th Floor	Office	± 8,499 RSF
8th Floor	Office	± 3,519 RSF
9th Floor	Office	± 1,400 - 7,295 RSF
10th Floor	Office	± 1,459 - ± 11,520 RSF
13th Floor	Office	± 3,059 RSF



1st FLOOR

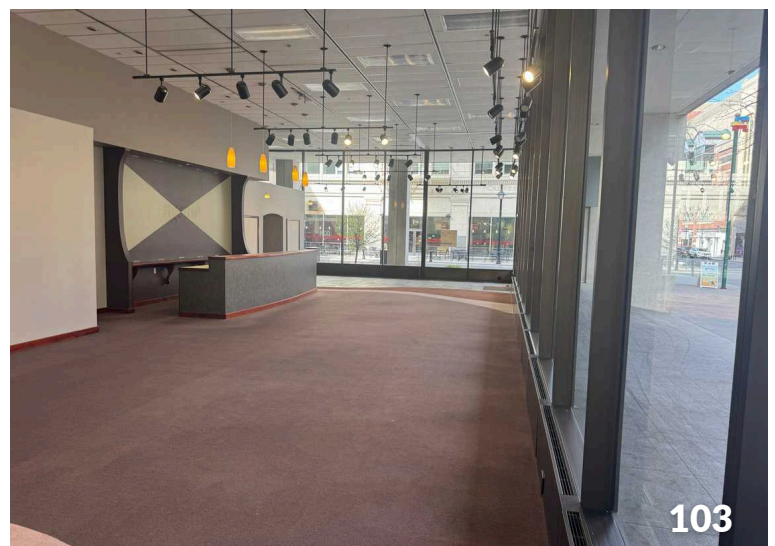
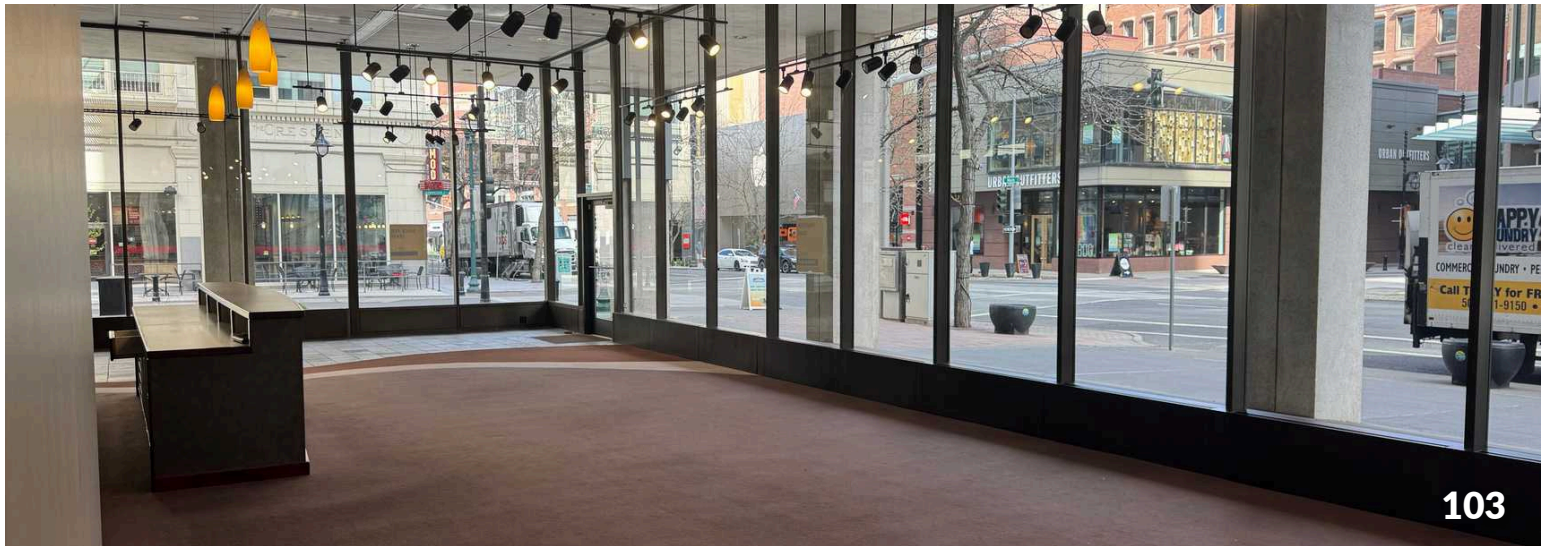
Suite 103 | RETAIL

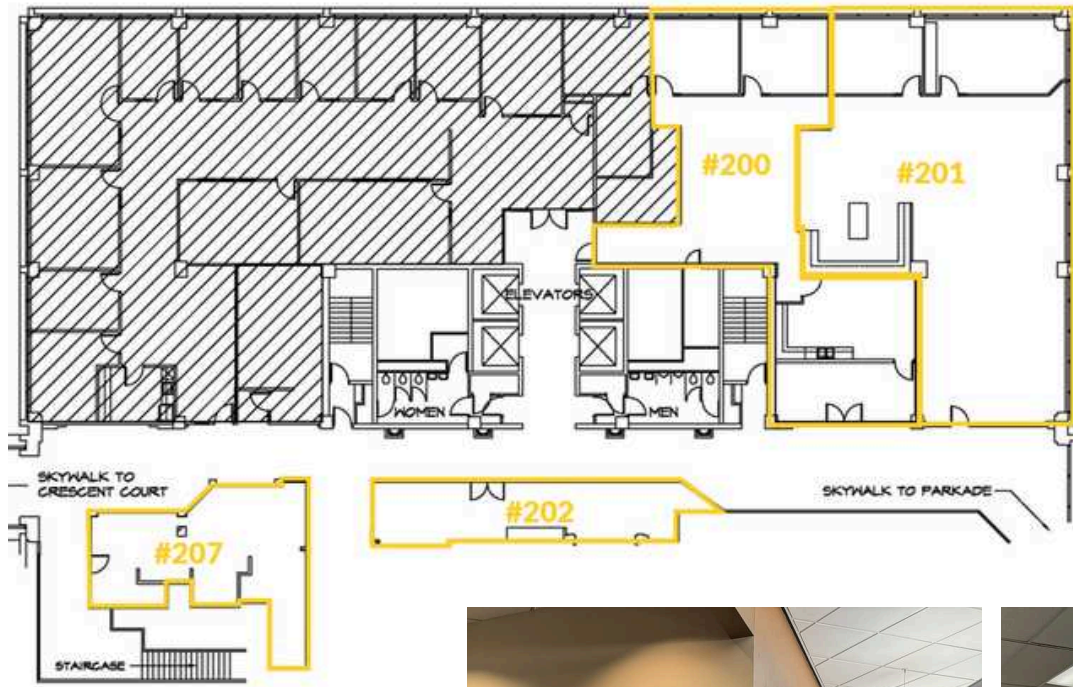
Suite Size | ±2,401 RSF

Lease Rate | \$25 PSF /YR

Highlights |

- Ground floor corner
- Incredible visibility along Main Avenue with prominent exterior building signage
- Well suited for restaurant or retail user
- Leasing incentives available
- Flexible lease terms





2nd FLOOR

Suite 200 | Retail/Office
Suite Size | ±1,881 RSF
 (Contiguous up to ±4,714 RSF)
Lease Rate | \$19.00 PSF /YR

Suite 201 | Retail/Office
Suite Size | ±2,883 RSF
 (Contiguous up to ±4,714 RSF)
Lease Rate | \$19.00 PSF /YR

Suite 202 | Retail
Suite Size | ±605 RSF
Lease Rate | Negotiable

Suite 207 | Retail
Suite Size | ±755 RSF
Lease Rate | Negotiable

Highlights |

- Leasing incentives and tenant improvements available
- Flexible lease terms



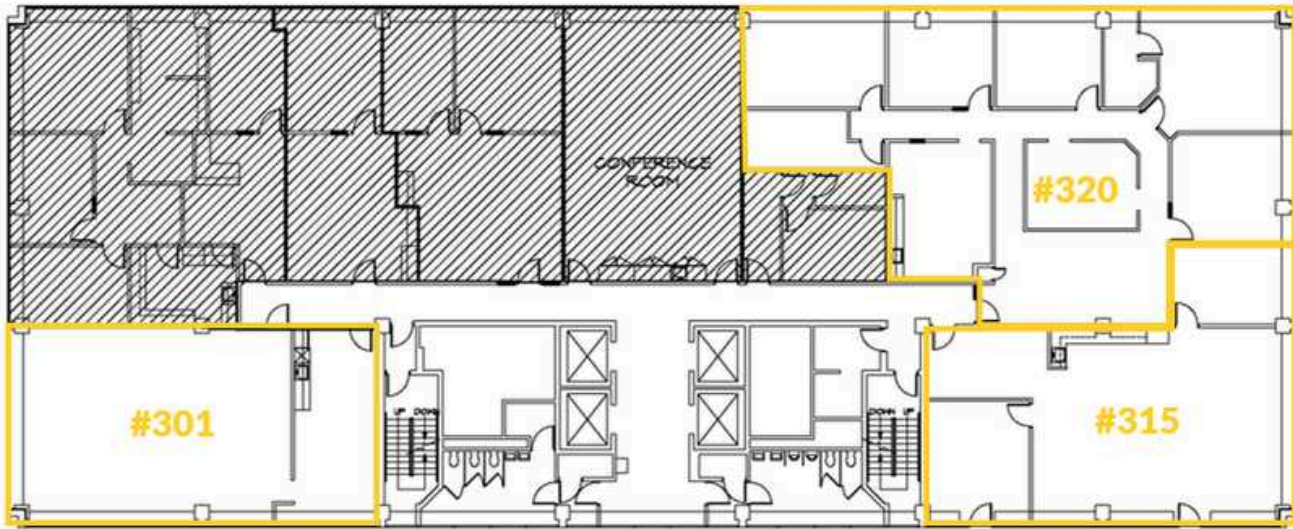
207



201



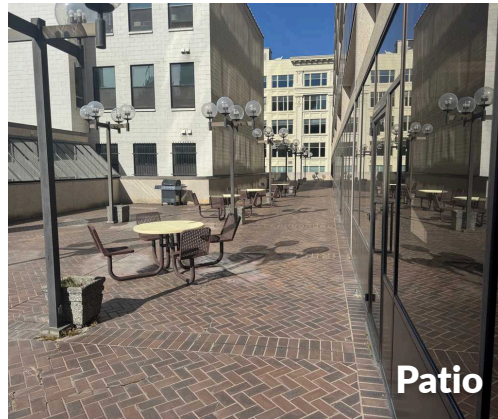
201



3rd FLOOR



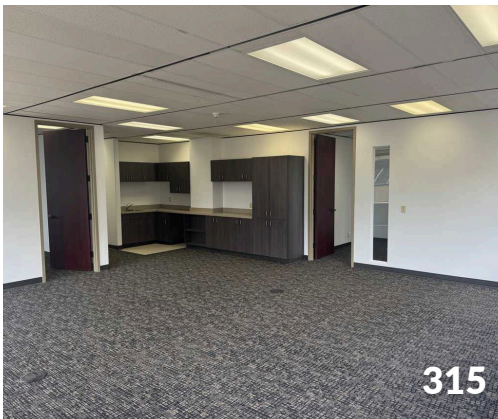
315



Patio

Suite 301 | Office
Suite Size | ±1,561 RSF
Lease Rate | \$17.00 PSF /YR

- 4 offices, conference room, reception & break areas



315



301

Suite 315 | Office
Suite Size | ±1,851 RSF
 (Contiguous up to ±4,845 RSF)
Lease Rate | \$19.00 PSF /YR

- Patio space, open work areas, office, conference, reception & break areas



320



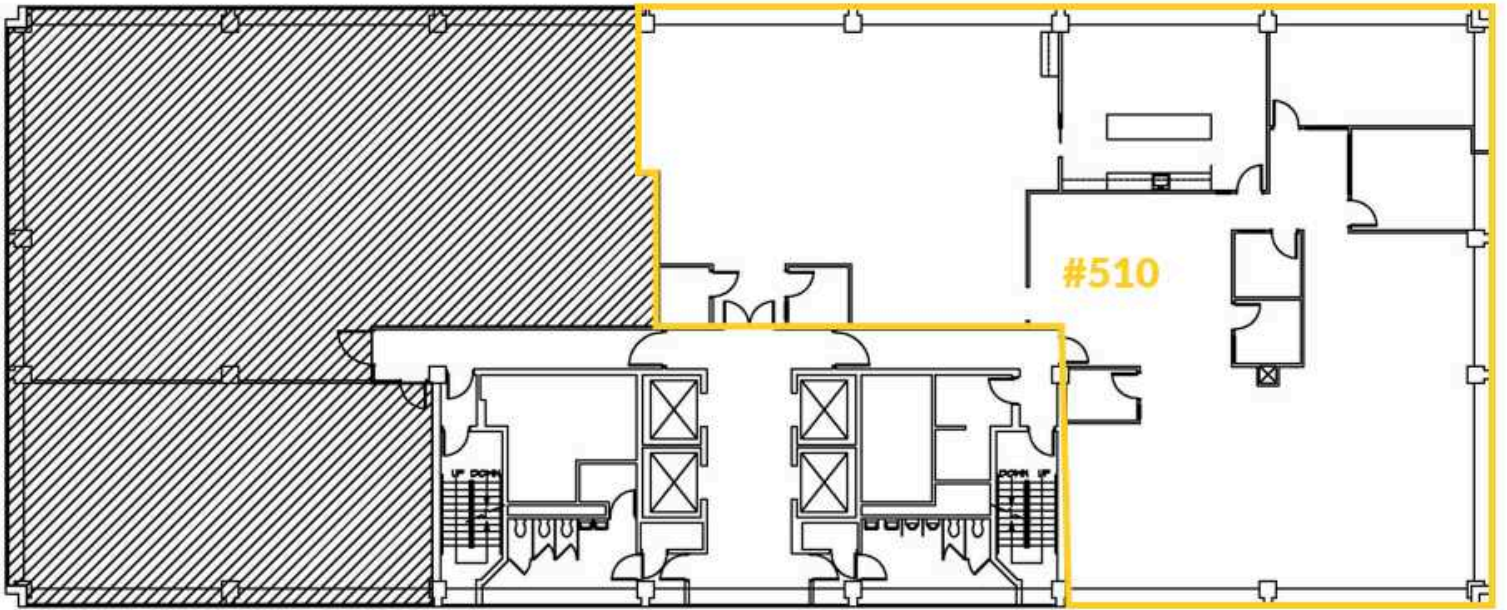
Common Conference Room

Suite 320 | Office
Suite Size | ±2,994 RSF
 (Contiguous up to ±4,845 RSF)
Lease Rate | \$19.00 PSF /YR

- 5 offices, conference room, reception, storage & break areas

Highlights |

- Leasing incentives and tenant improvements available
- Flexible lease terms



5th FLOOR

Suite 510 | Office

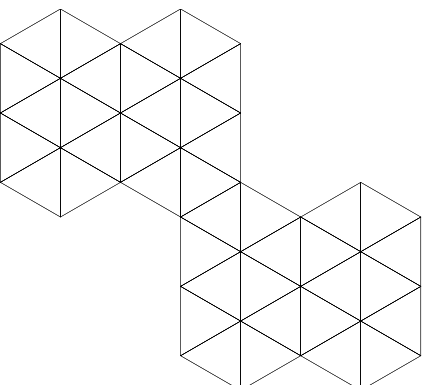
Suite Size | ±6,247 RSF

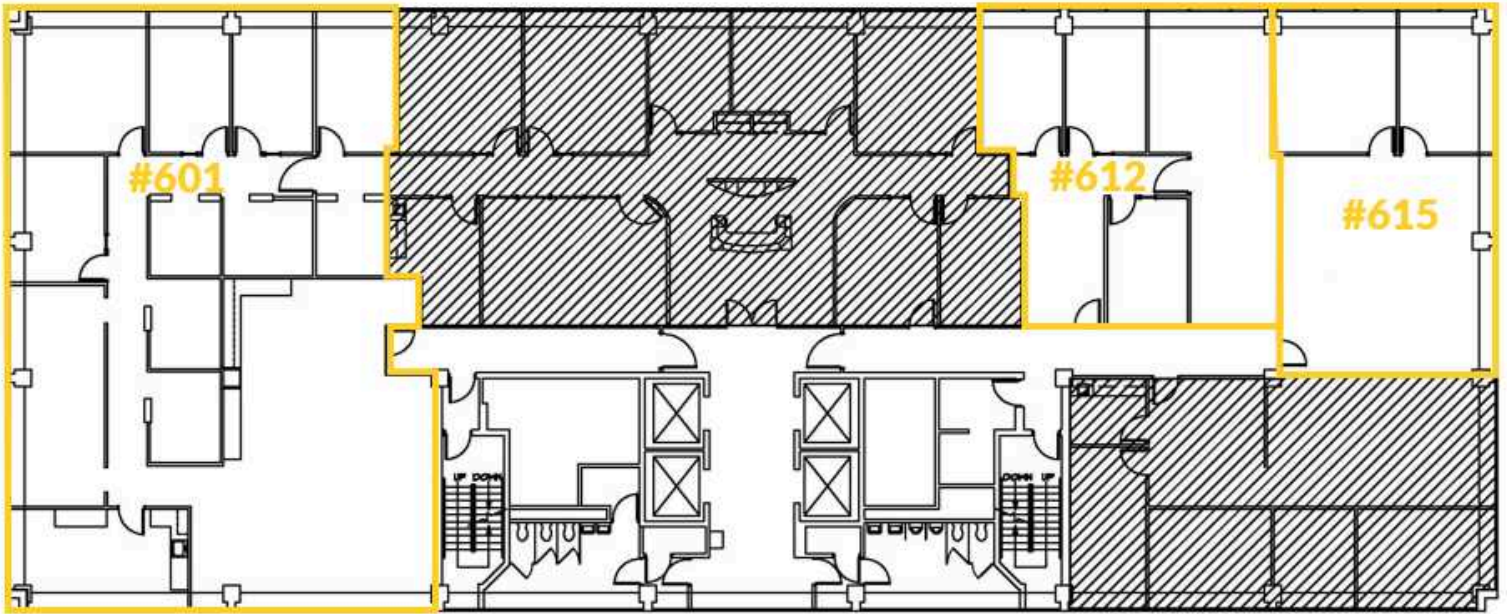
*Suite divisible to ±3,000 RSF

Lease Rate | \$19.00 PSF /YR

Highlights |

- Leasing incentives and tenant improvements available
- Flexible lease terms
- Open floor plan





6th FLOOR

Suite 601 | Office

Suite Size | ±4,452 RSF

Lease Rate | \$17.00 PSF /YR

Suite 612 | Office

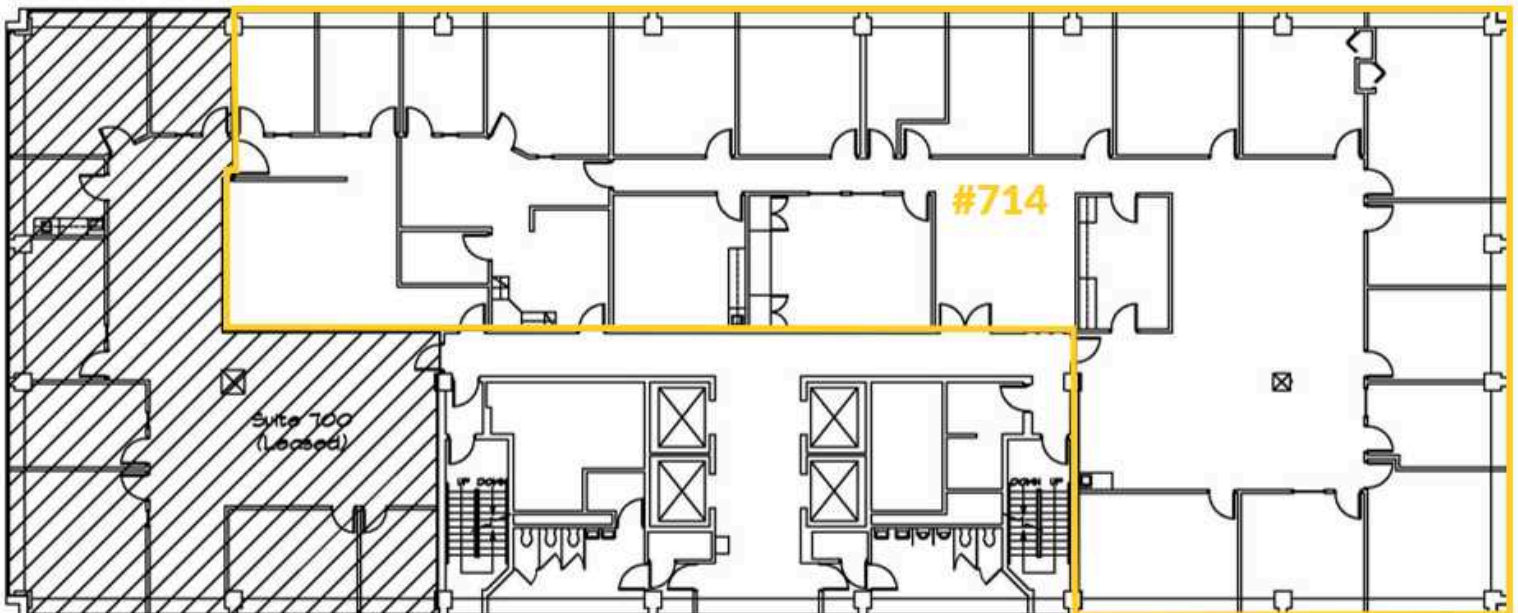
Suite Size | ±1,390 RSF

Lease Rate | \$17.00 PSF /YR

Suite 615 | Office

Suite Size | ±1,281 RSF

Lease Rate | \$17.00 PSF /YR



7th FLOOR

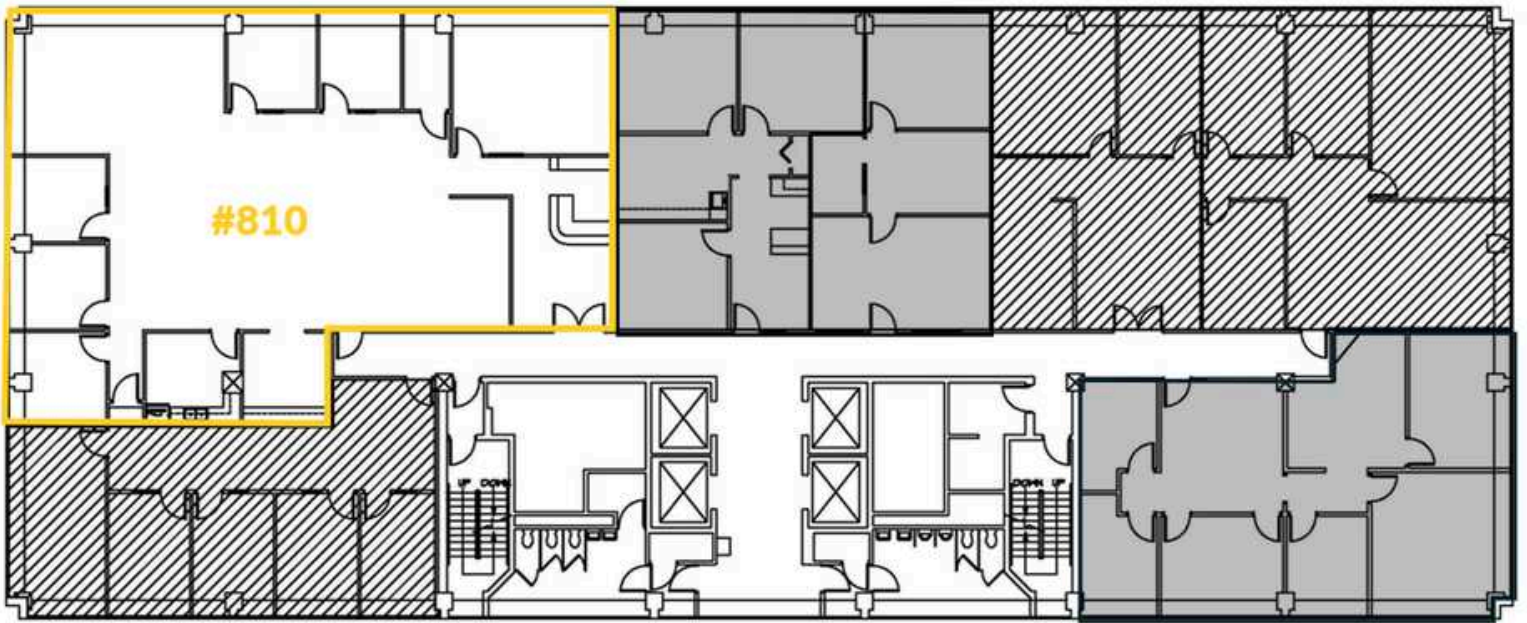
Suite 714 | Office

Suite Size | ±8,499 RSF

Lease Rate | \$17.00 PSF /YR

Highlights |

- Tenant improvements available
- Rate negotiable



8th FLOOR

Suite 810 | Office

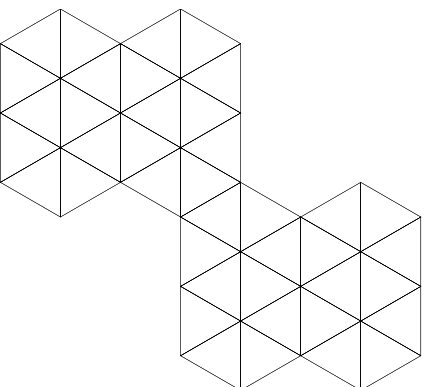
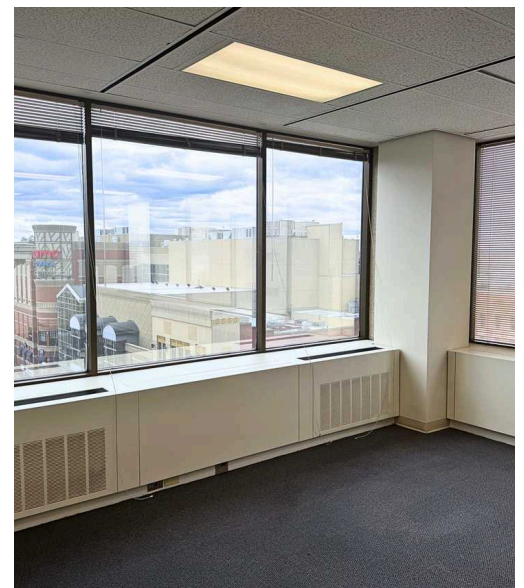
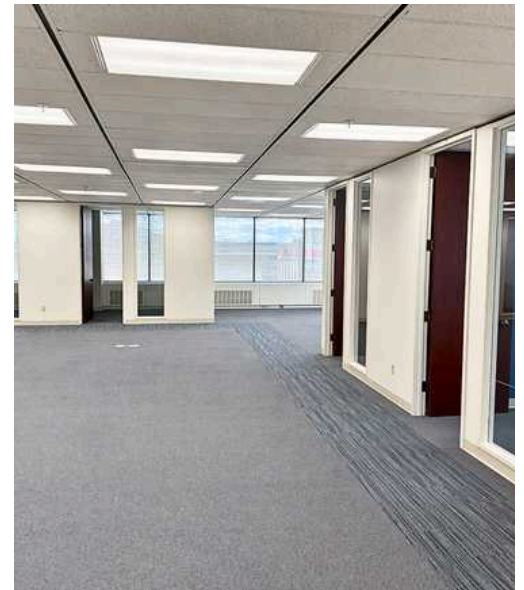
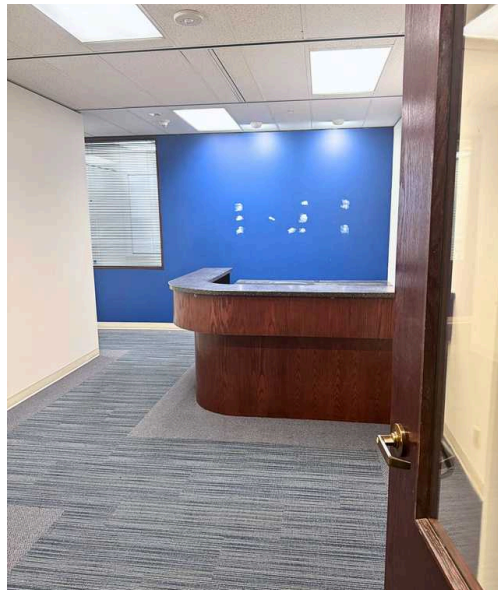
Suite Size | ±3,519 RSF

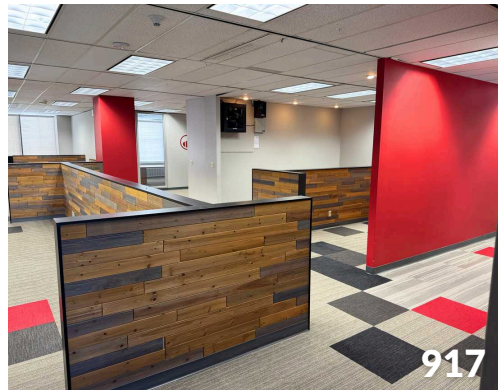
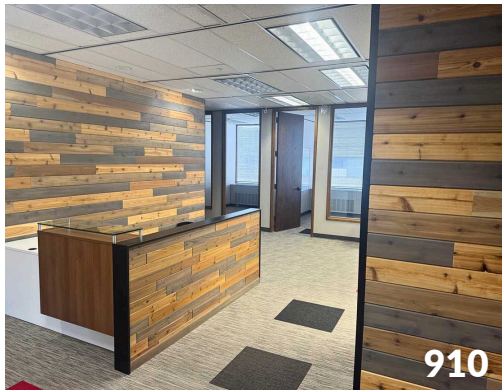
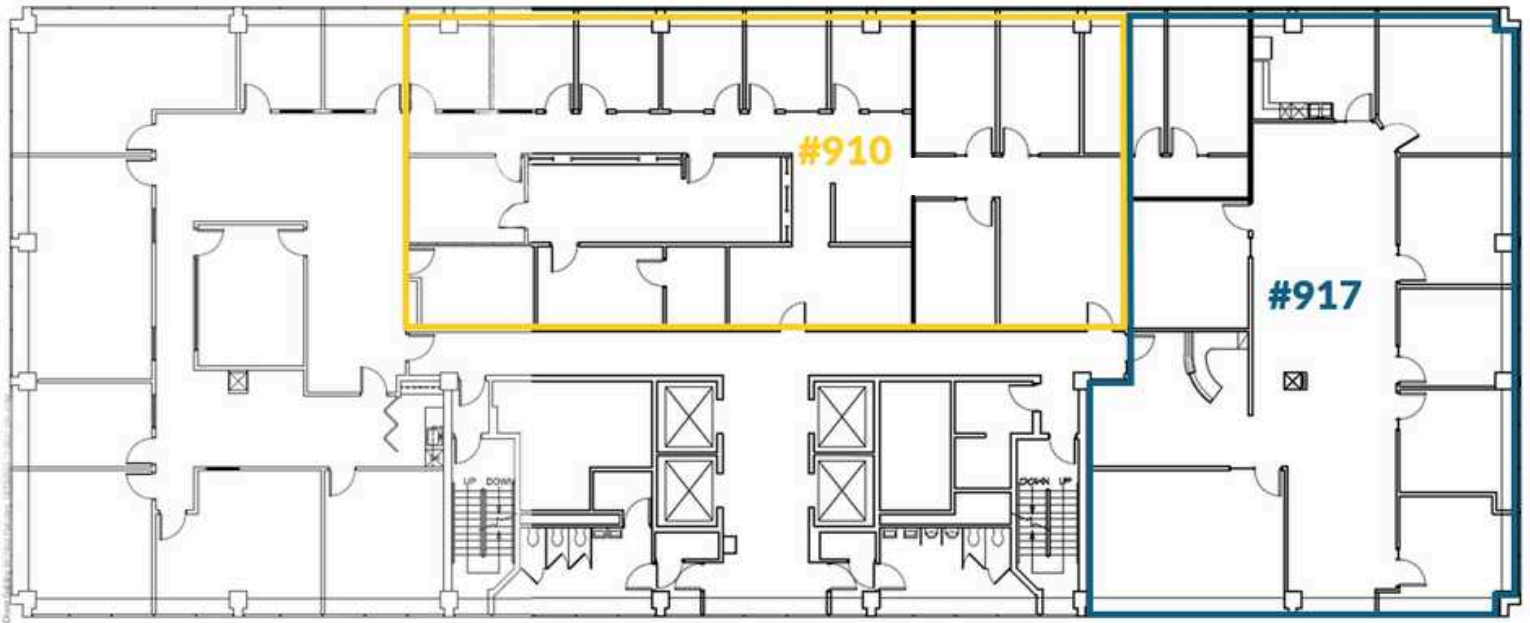
Lease Rate | \$22.00 PSF /YR

- 5 offices, reception area, break room, conference room, open work area

Highlights |

- Leasing incentives and tenant improvements available
- Flexible lease terms





9th FLOOR

Suite 910 | Office

Suite Size | ±3,801 RSF

(Contiguous up to ±7,295 RSF)

Lease Rate | \$22.00 PSF /YR

Suite 917 | Office

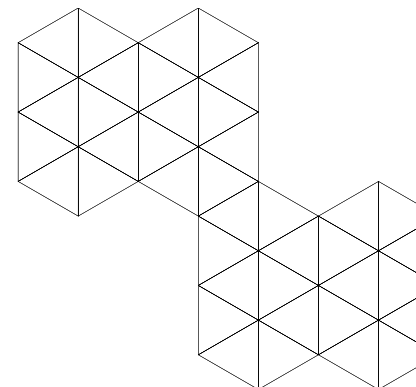
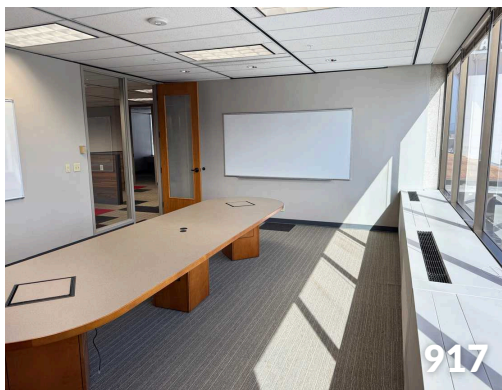
Suite Size | ±3,494 RSF

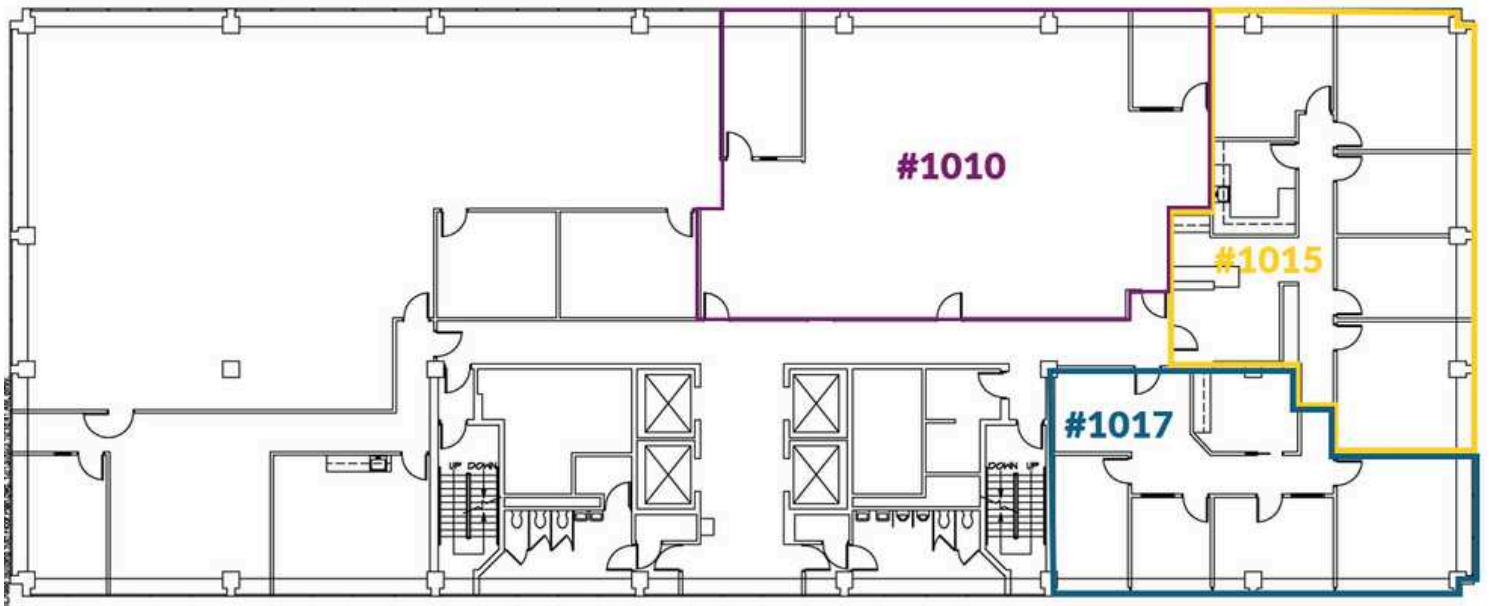
(Contiguous up to ±7,295 RSF)

Lease Rate | \$22.00 PSF /YR

Highlights |

- Leasing incentives and tenant improvements available
- Flexible lease terms





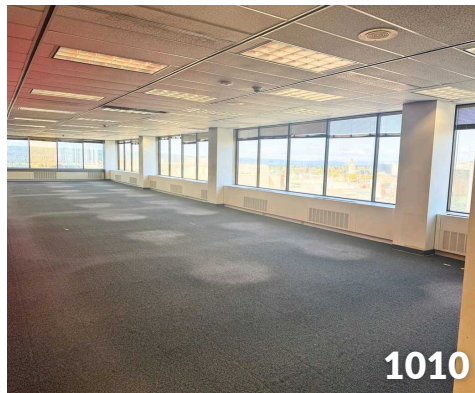
10th FLOOR

Suite 1010 | Office

Suite Size | ±8,198 RSF

(Contiguous up to ±11,520 RSF,
Full Floor Available)

Lease Rate | \$22.00 PSF /YR



1010



1010

Suite 1015 | Office

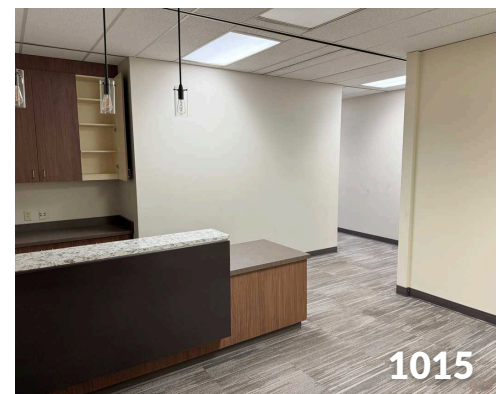
Suite Size | ±1,863 RSF

Lease Rate | \$22.00 PSF /YR

- Reception, lobby, 4 private offices, conference & break rooms



1015



1015

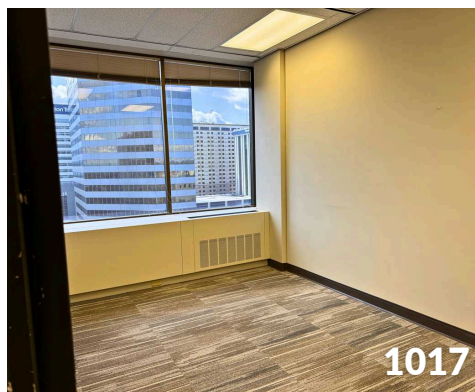
Suite 1017 | Office

Suite Size | ±1,459 RSF

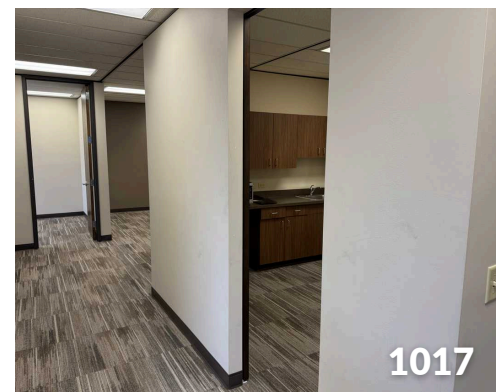
(Contiguous up to ±4,845 RSF)

Lease Rate | \$22.00 PSF /YR

- Reception, lobby, 4 private offices & break room



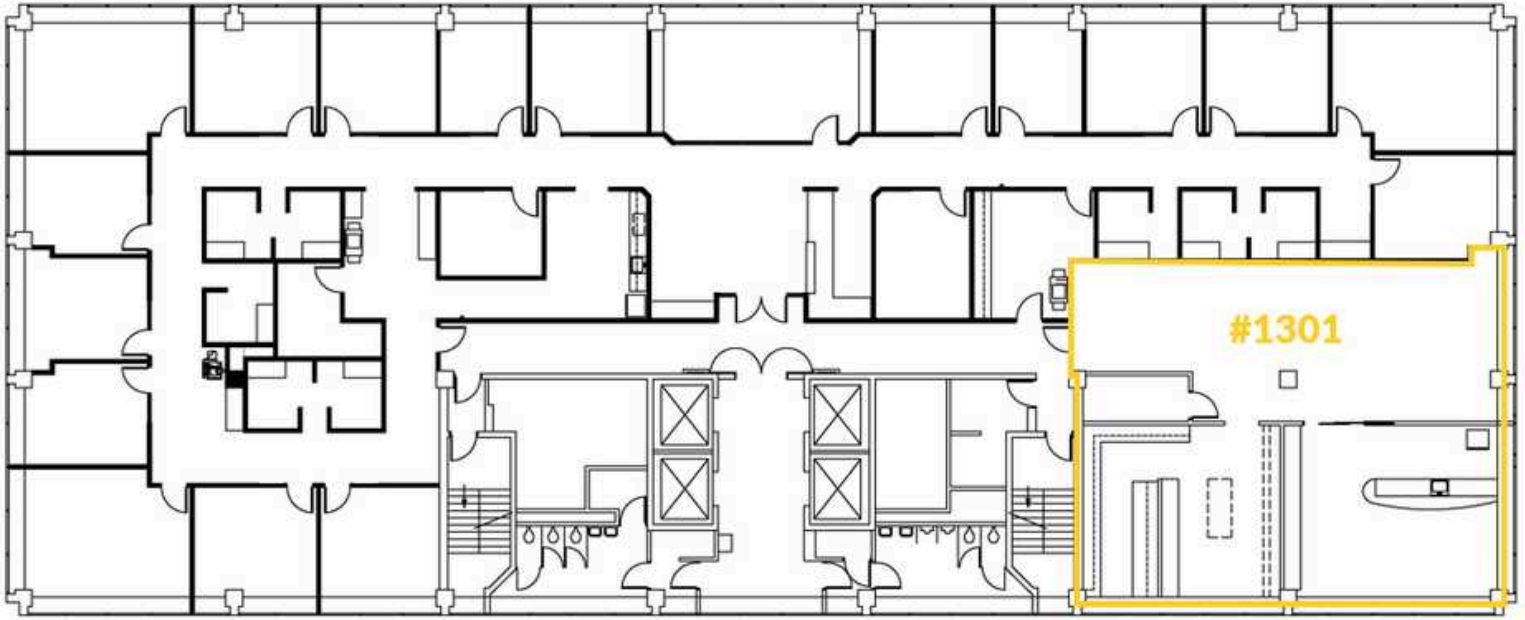
1017



1017

Highlights |

- Tenant improvements available
- Flexible lease terms



13th FLOOR

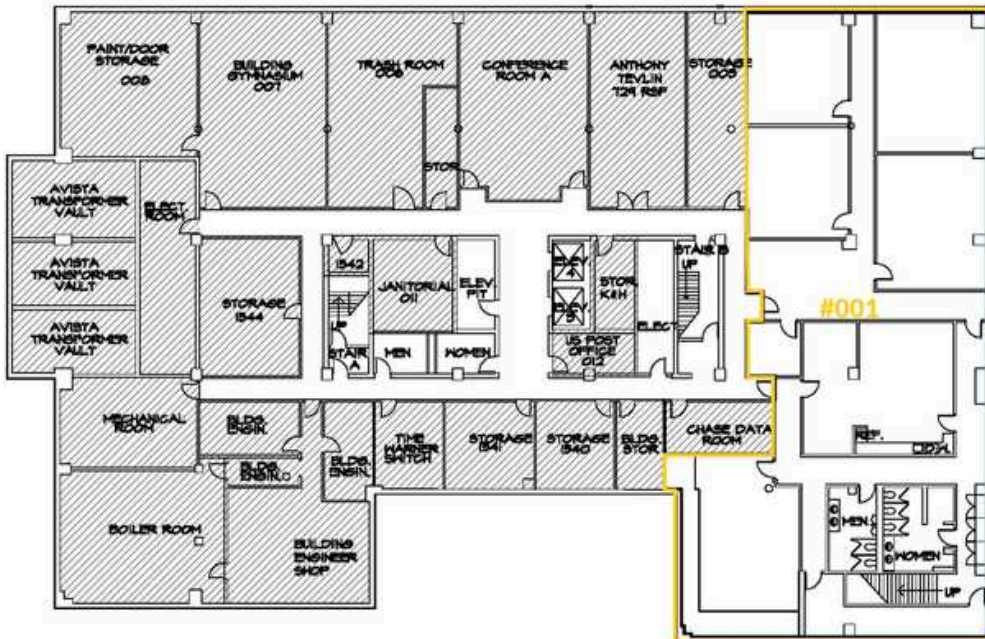
Suite 1301 | Office

Suite Size | ±3,059 RSF

Lease Rate | \$22.00 PSF /YR

Highlights |

- Leasing incentives and tenant improvements available
- Flexible lease terms



LOWER LEVEL

Suite 001 | Office

Suite Size | ±4,899 RSF

Lease Rate | Negotiable

- Multiple offices, 3 private offices, open floor plan, break room

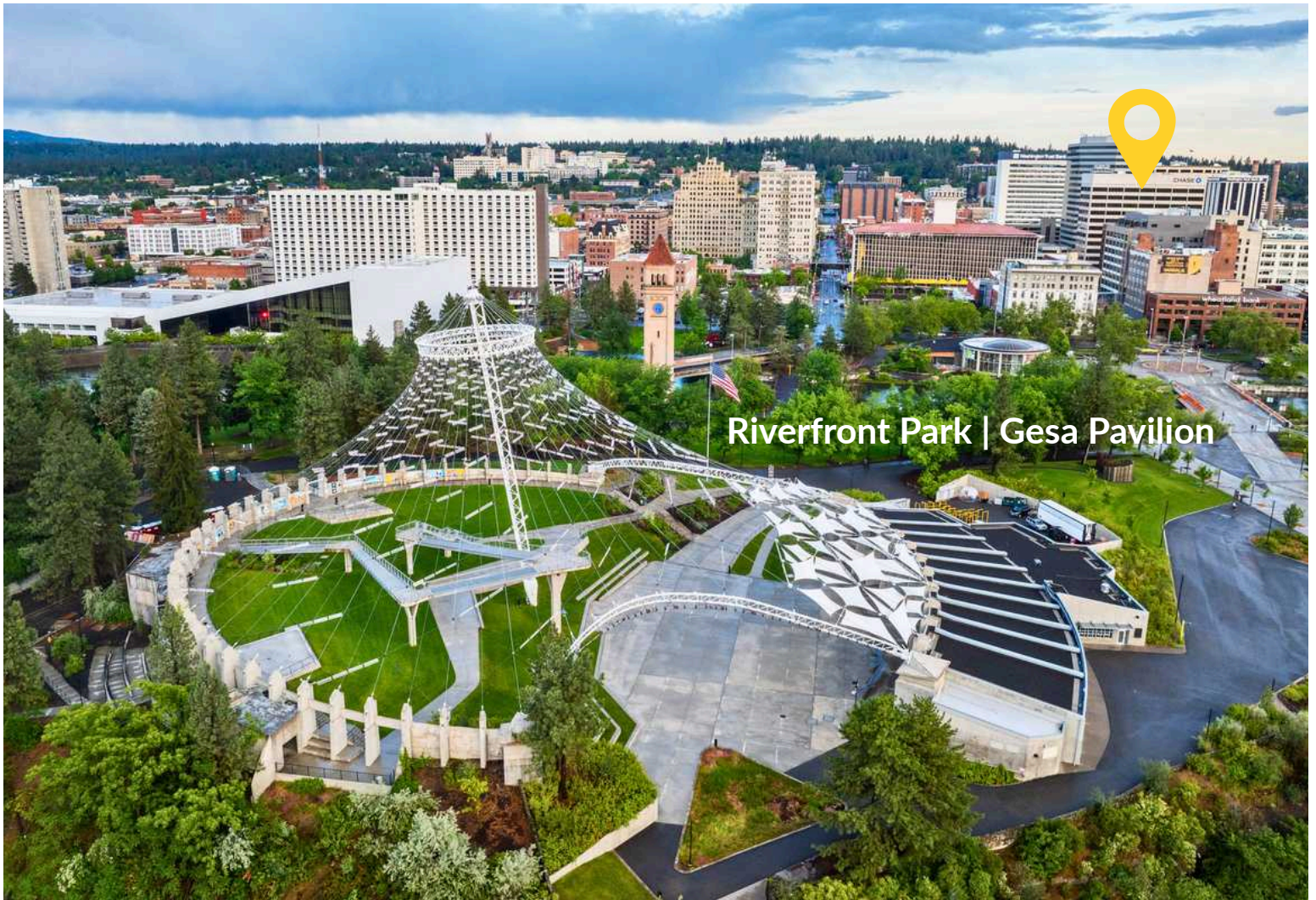
Highlights |

- Conference Room
- Fitness Room
- Leasing incentives and tenant improvements available
- Flexible lease terms

VIEW LOCATION



CHASE BANK BUILDING FOR LEASE



Riverfront Park | Gesa Pavilion

CHASE BANK BUILDING

601 W Main Avenue | Spokane, WA 99201

ANDY BUTLER, CCIM
509.385.9121
andy.butler@kiemlehagood.com



KIEMLEHAGOOD

No warranty or representation, expressed or implied, is made by Kiemle Hagood, its agents or its employees as to the accuracy of the information contained herein. All information furnished is from sources deemed reliable and submitted subject to errors, omissions, change of terms and conditions, prior sale, lease or financing, or withdrawal without notice. No one should rely solely on the above information, but instead should conduct their own investigation to independently satisfy themselves. Kiemle Hagood respects the intellectual property of others: If you believe the copyright in your work has been violated through this Website, please contact our office for notice of claims of copyright infringement. For your complaint to be valid under the Digital Millennium Copyright Act of 1998 (DMCA), you must provide the following information when providing notice of the claimed copyright infringement: Identify the material on the Website that you believe infringes your work, with enough detail so that we may locate it on the Website; provide your address, telephone number and email address; provide a statement that you have a good faith belief that the disputed use is not authorized by the copyright owner, its agent, or the law; provide a statement that the information in the notification is accurate, and under penalty of perjury, that the complaining party is authorized to act on behalf of the owner of an exclusive right that is allegedly infringed, and provide your physical or electronic signature. Upon receiving your complaint, Kiemle Hagood will, upon review, remove content that you believe infringes your copyright if the complaint is found to be valid.

OFFICE LOCATIONS
SPOKANE | COEUR D'ALENE | TRI-CITIES | MISSOULA

601 W MAIN AVENUE, SUITE 400
SPOKANE WA 99201