

WESTPARK BUSINESS PARK

FOR SUBLEASE: 7,756 SF

BUILDING C | 8410 154TH AVE NE | REDMOND, WA 98052

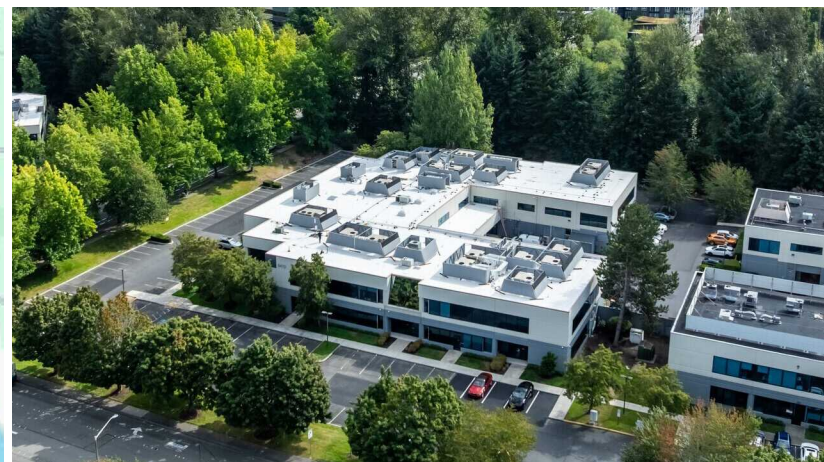
FLEX SPACE IN THE HEART OF REDMOND



Broker Bonus of \$5,000 for Sublease Signed By 6/30/2026

SUBLEASE DETAILS

Suite	Available Size	Office Size	Warehouse Size	Loading	Available	Sublease Term
120	7,756 SF	5,418 SF	2,338 SF	2 GL & 1 DH Shared	Now	Through 10/31/28



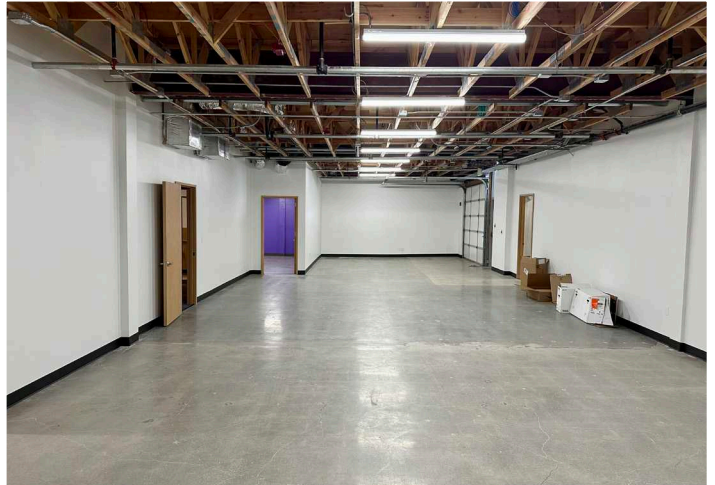
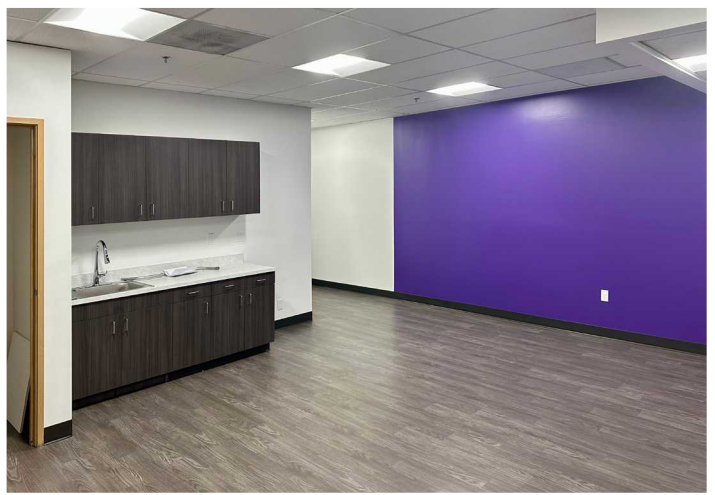
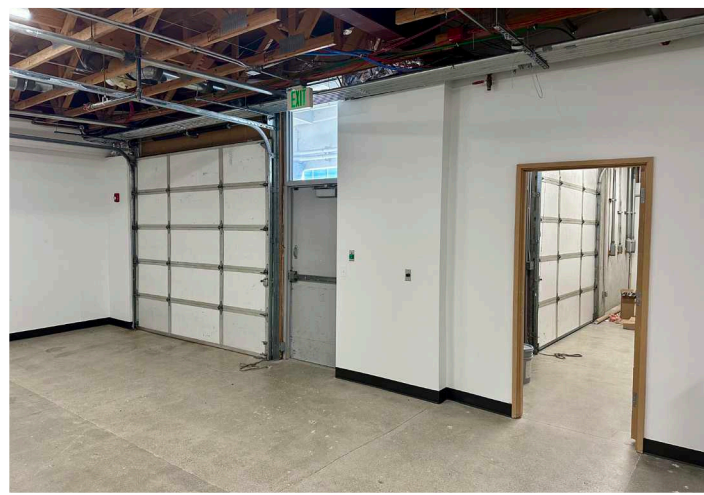
TONY KUSAK, SIOR
206.787.1465
tkusak@neilwalter.com

BEN DAVIDSON
206.787.1470
bdavidson@neilwalter.com

All information references in this document are approximate. The information contained herein is contained from sources deemed reliable. It is provided without representation, warranty, or guarantee, expressed or implied as to accuracy. Prospective buyer or tenant should conduct its own independent investigation relating to the property, government codes and regulations, allowed uses, and all other matters, regardless of whether they are referred to or contained in this document.

WESTPARK BUSINESS PARK

BUILDING C | 8410 154TH AVE NE | REDMOND, WA 98052



TONY KUSAK, SIOR
206.787.1465
tkusak@neilwalter.com

BEN DAVIDSON
206.787.1470
bdavidson@neilwalter.com

550 S Michigan St
Seattle, WA 98108
206.787.1800
www.neilwalter.com

All information references in this document are approximate. The information contained herein is contained from sources deemed reliable. It is provided without representation, warranty, or guarantee, expressed or implied as to accuracy. Prospective buyer or tenant should conduct its own independent investigation relating to the property, government codes and regulations, allowed uses, and all other matters, regardless of whether they are referred to or contained in this document.

