



7450

167 Industrial

7450 26th St E, Fife, WA



225,972 SF
available space



32'
clear height



2,990 SF
office space



Available
now

167 Industrial

Property features and offered space

225,972 SF
Available space



2,990 SF
Office space

70
Dock-high doors
w/ mechanical pit levelers



4
Grade-level doors

ESFR
Sprinkler



Three Phase
Power

32'
Clear height

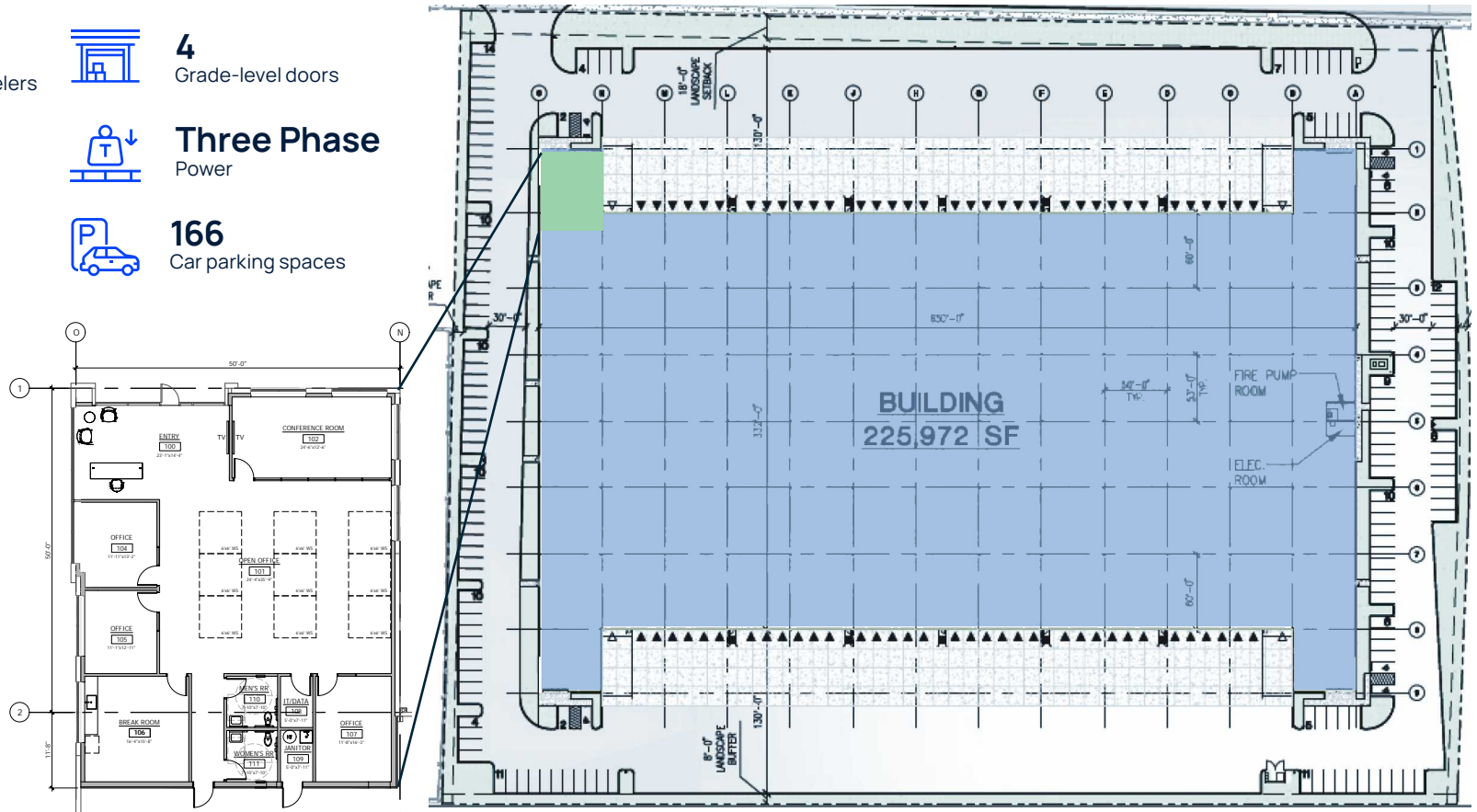


166
Car parking spaces

Available
Now

53' x 50'
Column grid

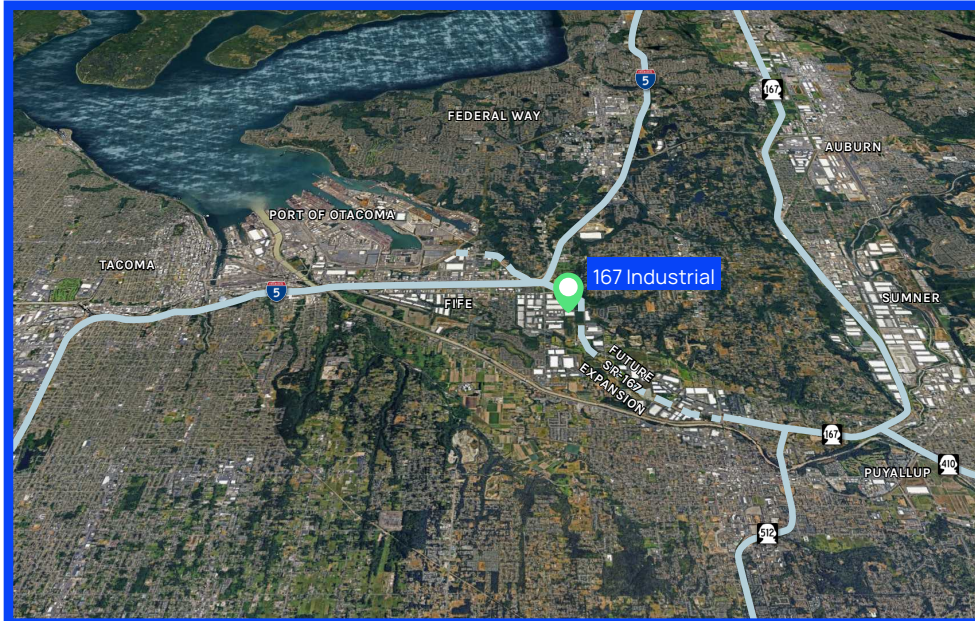
26th Street East



LEGEND

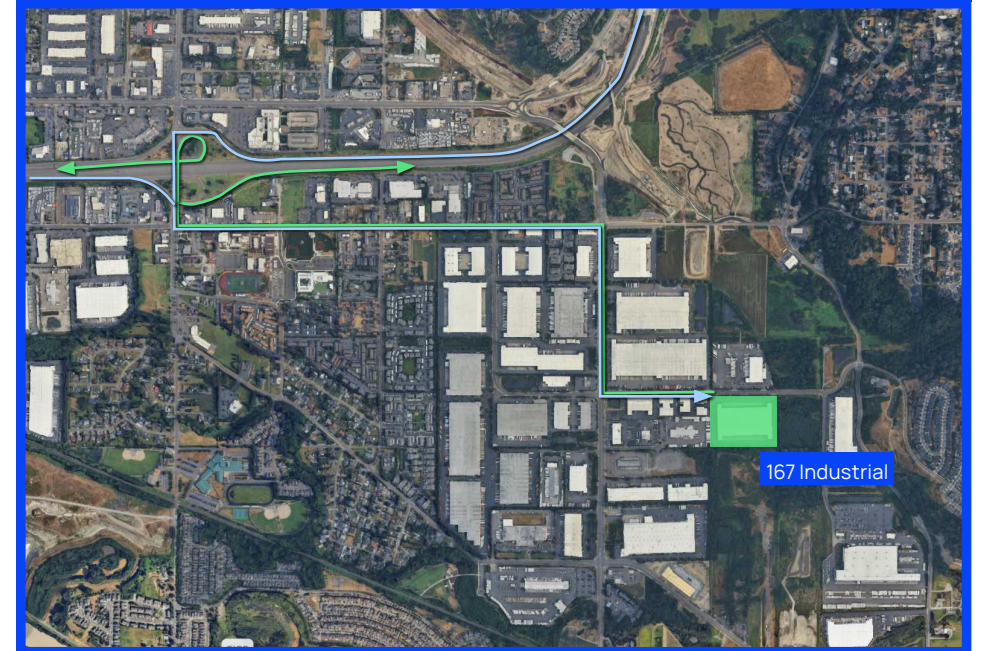
- Warehouse
- Office
- ▲ Dock Doors
- △ Drive-In Doors





Points of interest

I-5	4 minutes
SR-167 Future SR-167 Expansion Information	6 minutes
Port of Tacoma	10 minutes
Port of Seattle	11 minutes



Proven track record

of Marq Logistics



Marq Logistics is a global leader in the development and operation of modern logistics facilities and manages a portfolio of approximately 2,000 properties totaling more than 645 million square feet. With a mission to deliver institutional-quality logistics facilities and a consistent, best-in-class experience to customers around the world, Marq's highly specialized and dedicated team provides a powerful combination of global scale with local expertise.

Learn more about Marq at www.marqlogistics.com, and view our current properties at www.glp.com.br.

Kraig Heeter, SIOR

Executive Vice President

206-248-7313

Kraig.heeter@kidder.com

Matt Wood, SIOR

Partner

206-595-6814

matt.wood@kbcadvisors.com

 Kidder
Mathews


KBCADVISORS