



# STADIUM EAST

REFINED SPACE.  
DEFINED SUCCESS.



SEATTLE | WASHINGTON  
SEATTLE | WASHINGTON

# STADIUM EAST

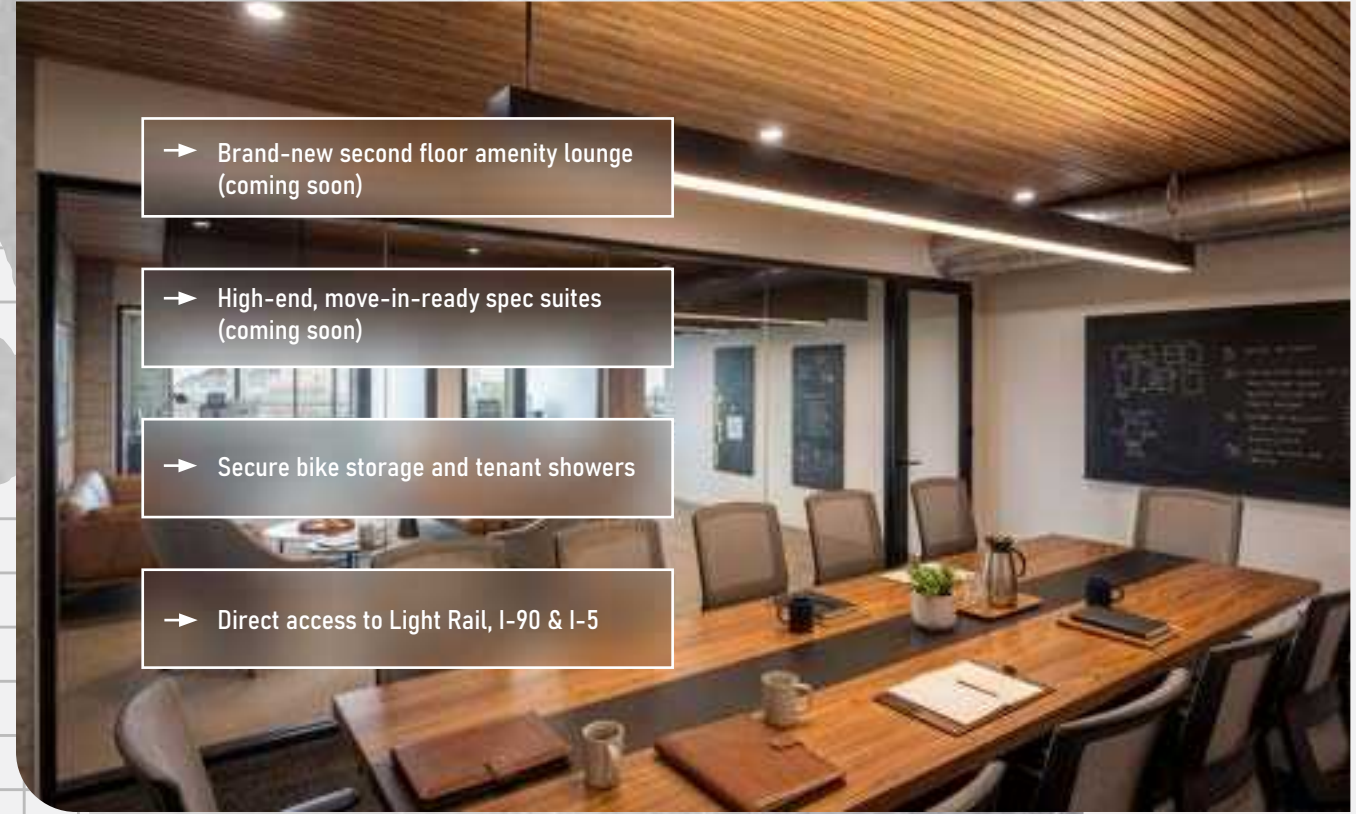
## CRAFTED FOR MODERN WORK

STADIUM EAST—REIMAGINED FOR TODAY'S CREATIVE AND FORWARD-THINKING USERS.

Anchored just outside Lumen Field, the building blends industrial character with modern refinement, featuring a renovated amenity floor and spec suites, upgraded penthouse and lobby and a bold new exterior presence. Designed to inspire collaboration and flexibility, Stadium East offers a rare opportunity to work at the intersection of creativity, connectivity, and culture.



## STADIUM EAST



- Brand-new second floor amenity lounge (coming soon)
- High-end, move-in-ready spec suites (coming soon)
- Secure bike storage and tenant showers
- Direct access to Light Rail, I-90 & I-5



UW CAMPUS



SPACE NEEDLE



BELLEVUE



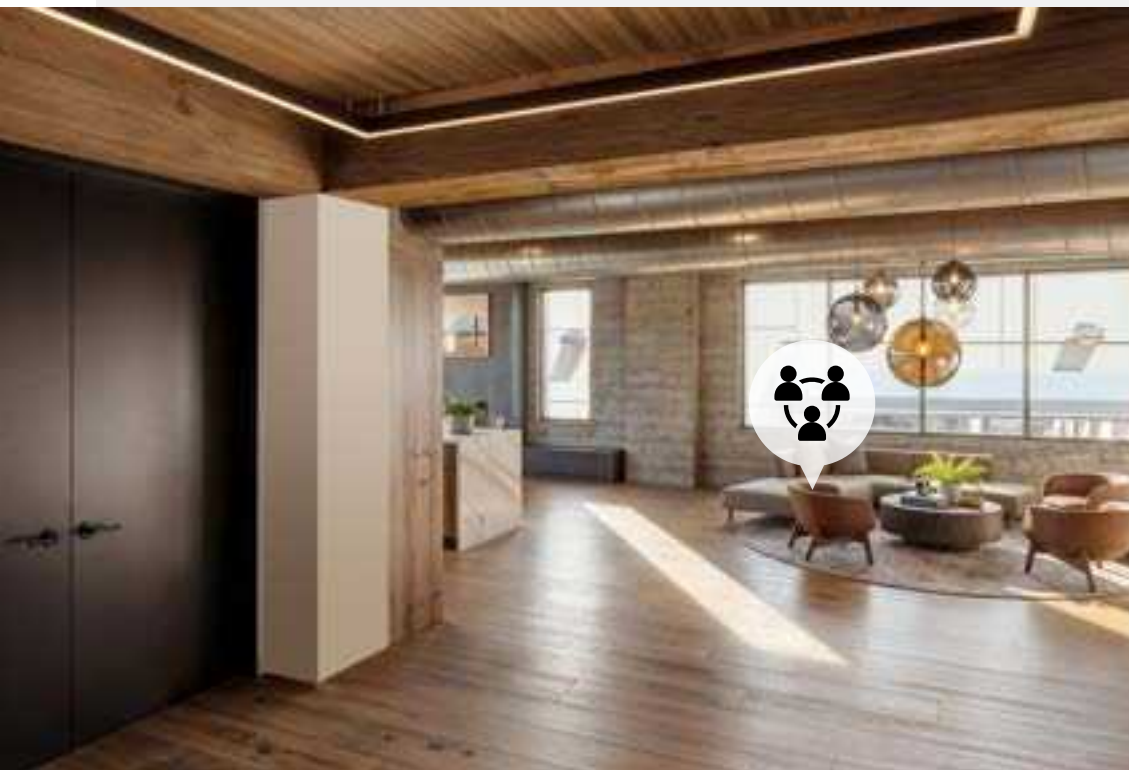
COLMAN DOCK



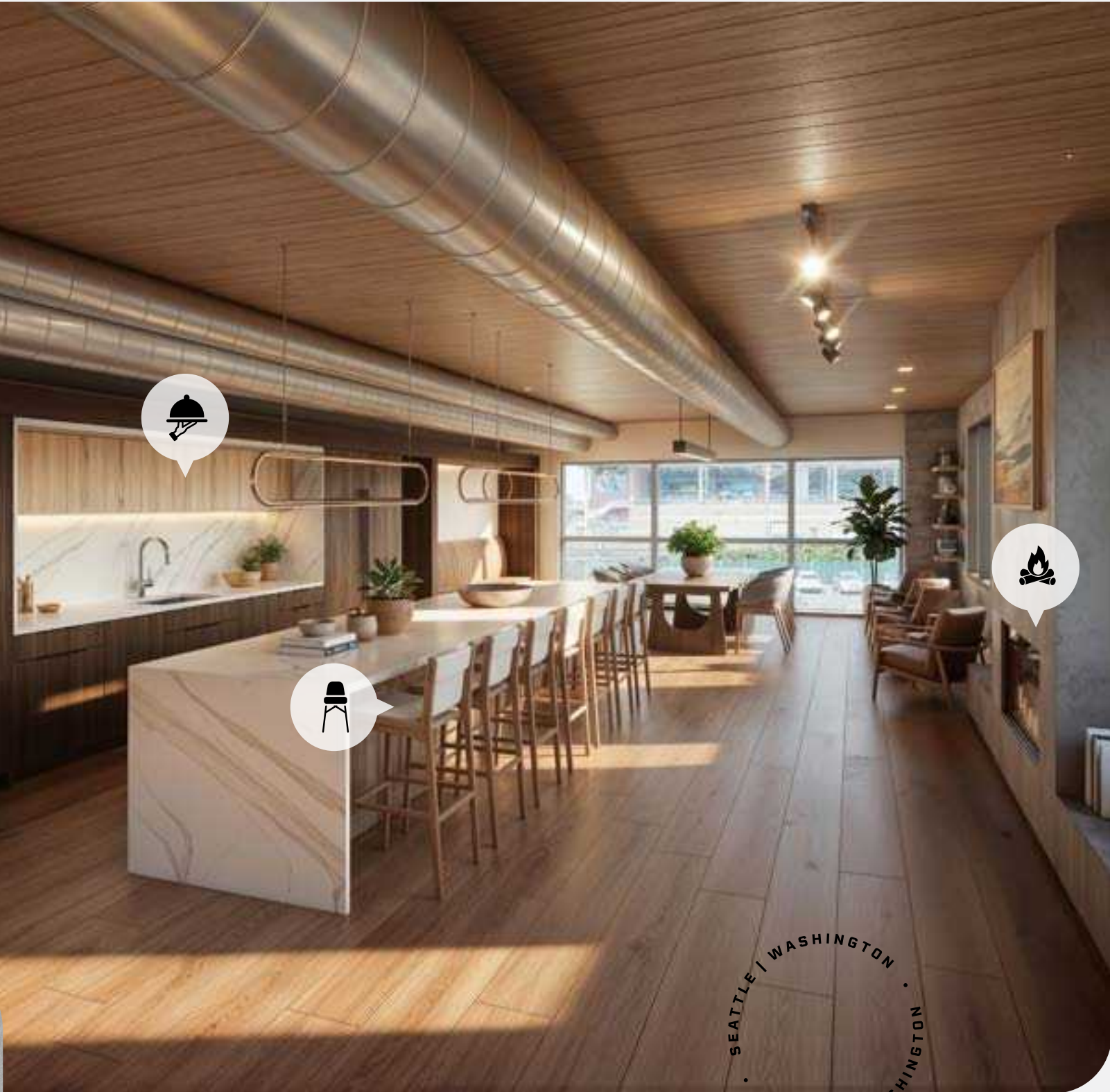
SEATTLE TACOMA INT'L AIRPORT

# A SPACE TO GATHER AND RECHARGE

The upcoming second-floor amenity level is designed as a natural extension of the workplace - offering a refined environment for collaboration, connection, and recharge. Featuring a thoughtfully curated lounge, hospitality-inspired kitchen, fireplace and bar seating, the space supports both productivity and lifestyle. Paired with three high-end spec suites finished with elevated materials and furnishings, the amenity floor delivers a seamless, move-in-ready experience tailored for today's creative teams.



RECHARGE



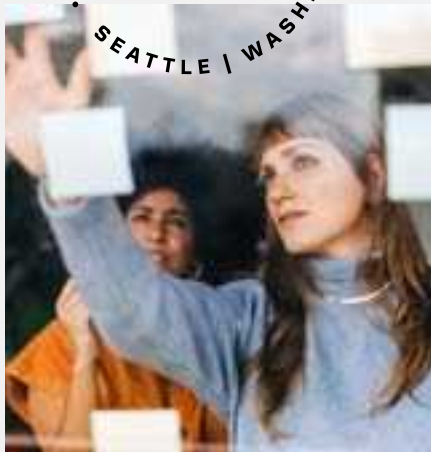
SEATTLE | WASHINGTON  
SEATTLE | WASHINGTON

# AVAILABILITIES

LOCATION	SQUARE FOOTAGE
2nd Floor - Spec Suites	Suite A - 4,565 SF
	Suite B - 4,320 SF
	Suite C - 3,143 SF
3rd Floor	14,137 SF
4th Floor	13,960 SF
Penthouse & Rooftop Terrace	4,342 SF



SEATTLE | WASHINGTON  
SEATTLE | WASHINGTON



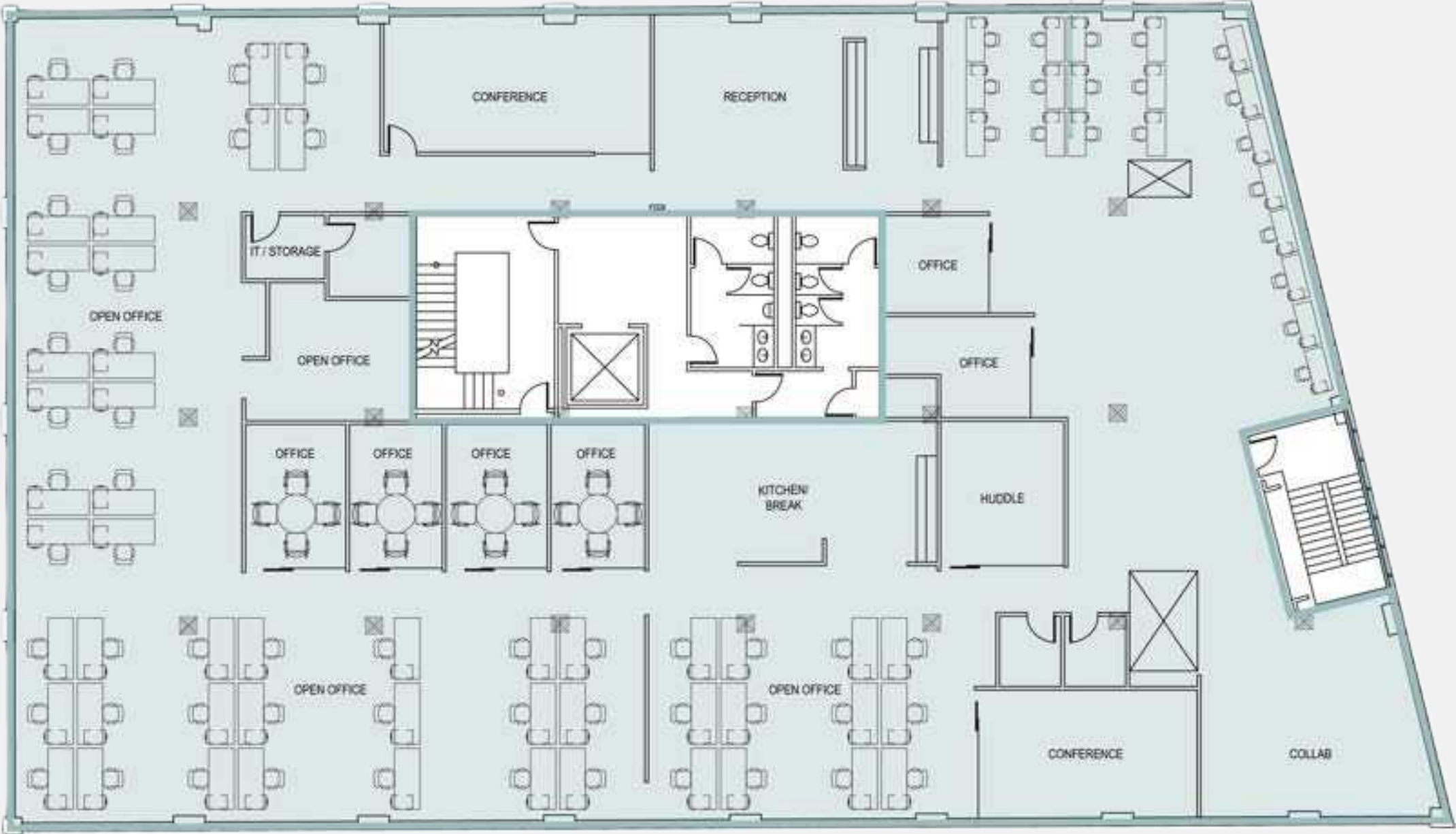
# 2ND FLOOR

TENANT LOUNGE & SPEC SUITES



# 3RD FLOOR

14,137 SF



# 4TH FLOOR

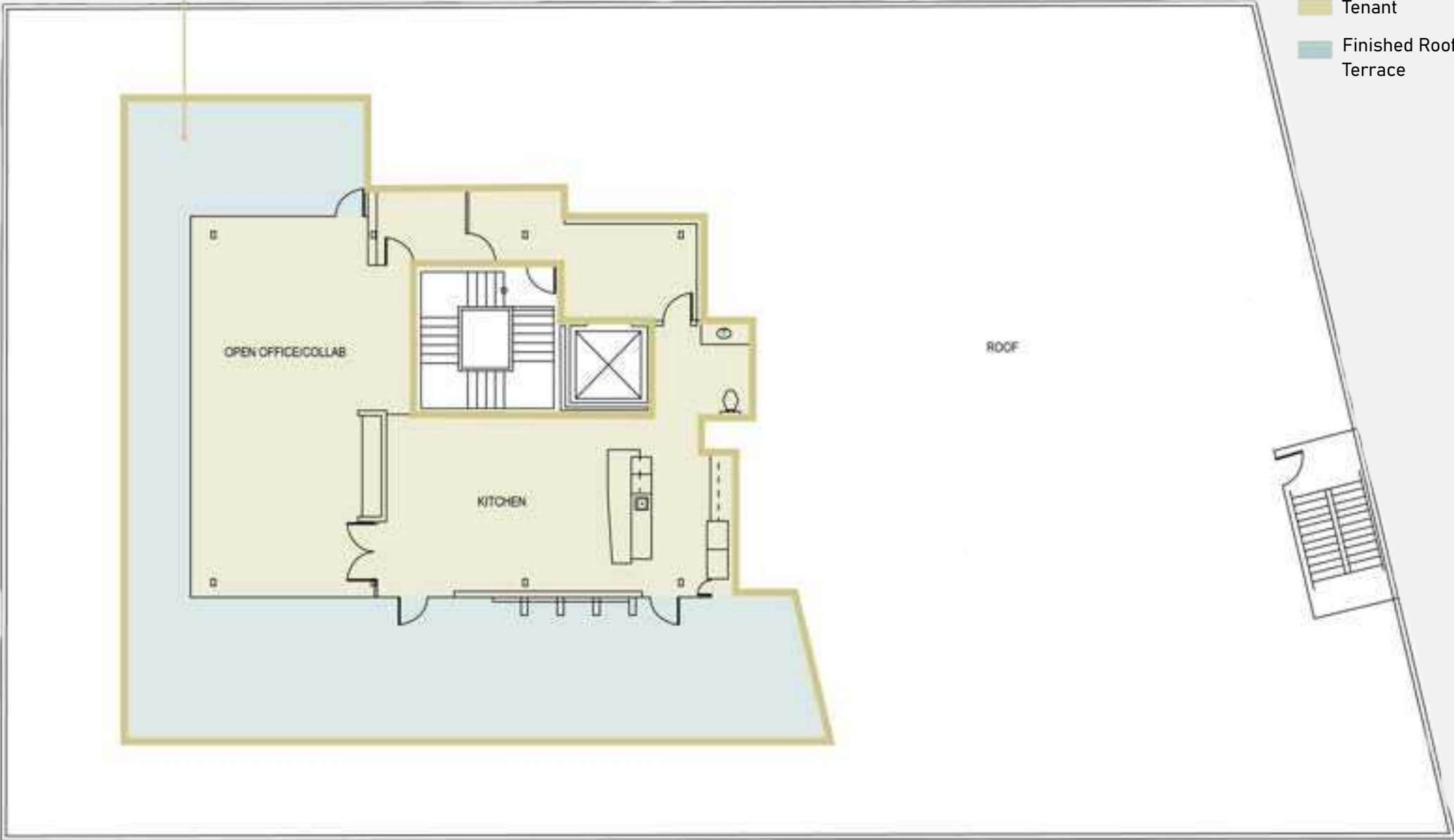
13,960 SF



# PENTHOUSE

AND ROOFTOP TERRACE

4,342 SF



# CONNECTED & CONVENIENT

Located at the edge of Seattle's Stadium District, Stadium East offers immediate access to Downtown, Pioneer Square, and the city's most dynamic destinations. With light rail just steps away and direct connections to I-5 and I-90, commuting across the region is seamless. Surrounded by a diverse mix of dining, coffee, and entertainment options and energized by the activity of game days and city life; Stadium East places your team exactly where work and lifestyle intersect.

- Light rail access at Union Station
- Walkable to Pioneer Square & downtown
- Immediate I-5 & I-90 connectivity
- Surrounded by dining, coffee & culture

- Fitness
- Grocery
- Coffee shops
- Restaurants

SPACE NEEDLE



PIKE PLACE MARKET



AQUARIUM



GREAT WHEEL



GOLMAN DOCK

LUMEN FIELD



T-MOBILE PARK



STADIUM EAST

STADIUM EAST

PIONEER SQUARE

DOWNTOWN SEATTLE

UNION STATION

SEATTLE | WASHINGTON  
SEATTLE | WASHINGTON



# WHERE THE WORKDAY BUILDS MOMENTUM

STADIUM EAST

12

12:00PM  
Meeting in the conference room



1

1:15PM  
Mid-day lunch break

2

PM

3

3:15PM  
Collaborate in the tenant lounge



4

5

5:30PM  
Happy hour at Taylor Shellfish Oyster House



AM

6:00AM  
Wake up, morning yoga class



6

7:00PM  
Catch a Mariners Game at T-Mobile Park



7

8:45AM  
Get off the light rail at Union Station



8

9

9:00AM  
Arrive at Stadium East to set up your day

10

11

11:00AM  
Refuel with coffee at Hood Famous Bakeshop



1	2	3	4	5	6
7	8	9	10	11	12
14	15	16	17	18	19
21	22	23	24	25	26
28	29	30			

# STADIUM EAST



## BRANDON BURMEISTER

Senior Director  
+1 206 215 9702  
brandon.burmeister@cushwake.com

## LEAH MASSON

Senior Director  
+1 206 215 9803  
leah.masson@cushwake.com



©2026 Cushman & Wakefield. All rights reserved. The information contained in this communication is strictly confidential. This information has been obtained from sources believed to be reliable but has not been verified. NO WARRANTY OR REPRESENTATION, EXPRESS OR IMPLIED, IS MADE AS TO THE CONDITION OF THE PROPERTY (OR PROPERTIES) REFERENCED HEREIN OR AS TO THE ACCURACY OR COMPLETENESS OF THE INFORMATION CONTAINED HEREIN, AND SAME IS SUBMITTED SUBJECT TO ERRORS, OMISSIONS, CHANGE OF PRICE, RENTAL OR OTHER CONDITIONS, WITHDRAWAL WITHOUT NOTICE, AND TO ANY SPECIAL LISTING CONDITIONS IMPOSED BY THE PROPERTY OWNER(S). ANY PROJECTIONS, OPINIONS OR ESTIMATES ARE SUBJECT TO UNCERTAINTY AND DO NOT SIGNIFY CURRENT OR FUTURE PROPERTY PERFORMANCE. COE-PM-West-05.4.2026