

**For Sublease**

Available Now

18,491 SF plug and play space

# RAINIER TOWER

1301 5th Ave Seattle, WA 98101



**CBRE**

# Sublease Highlights

**Floor 18:** 18,491 RSF

**Term:** Sublease term through June 30th, 2028

**Asking Rate:** \$28.00 FSG

**Plug and Play:** FF&E available

**Views:** Downtown and Elliot Bay vistas

**Parking:** 10 stalls available

**Building Amenities:** New tenant fitness center, showers & lockers, and bike storage, with Fonte Bar, PCC Corner Market, Mendocino Farms, Fogo de Chao, and Equinox Fitness on-site

**Location:** 50-Yard-Line Seattle CBD location, walking distance to mass transit and restaurants



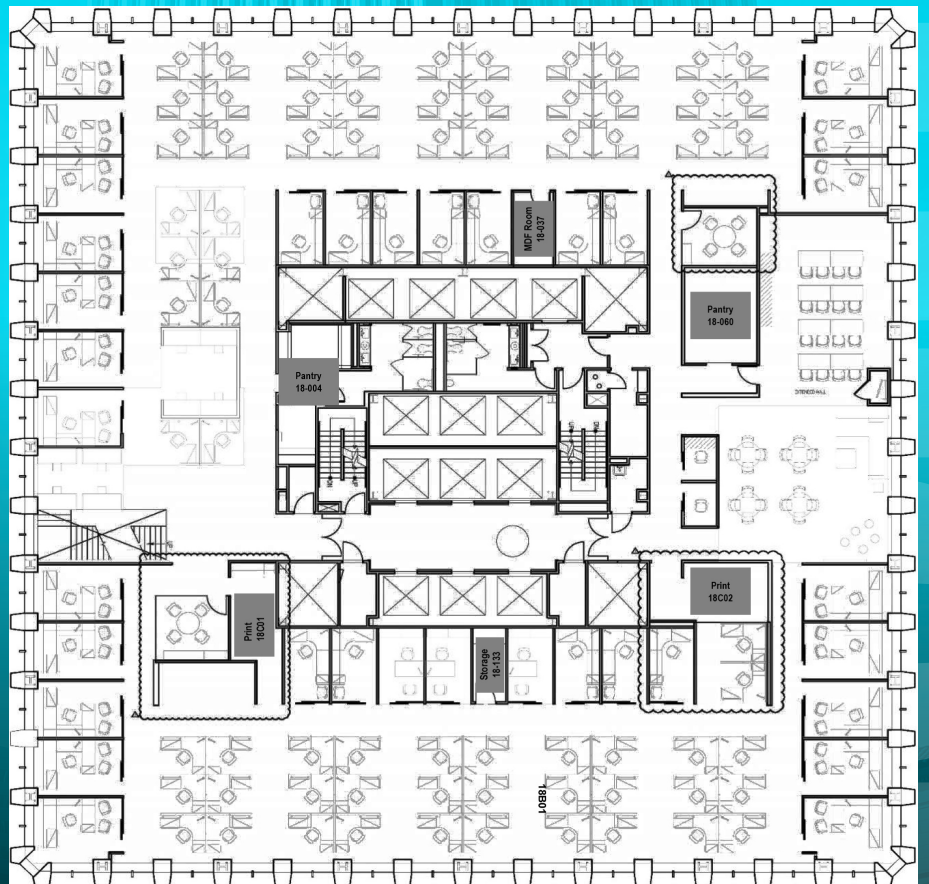
## Virtual Tour





# Space Highlights

- 70 Large Workstations
- 35 Private Offices
- Collaboration Area
- Kitchen
- Large Training Room



**For Sublease**

18,491 SF SF plug and play space

# RAINIER TOWER

1301 5th Ave Seattle, WA 98101

**DAN MARCONI**

Vice President

+1 206 769 9607

[dan.marconi@cbre.com](mailto:dan.marconi@cbre.com)

**JOE RILEY**

Senior Vice President

+1 206 743 2432

[joe.riley1@cbre.com](mailto:joe.riley1@cbre.com)

**MICHAEL DASH**

Vice Chairman

+1 206 292 6170

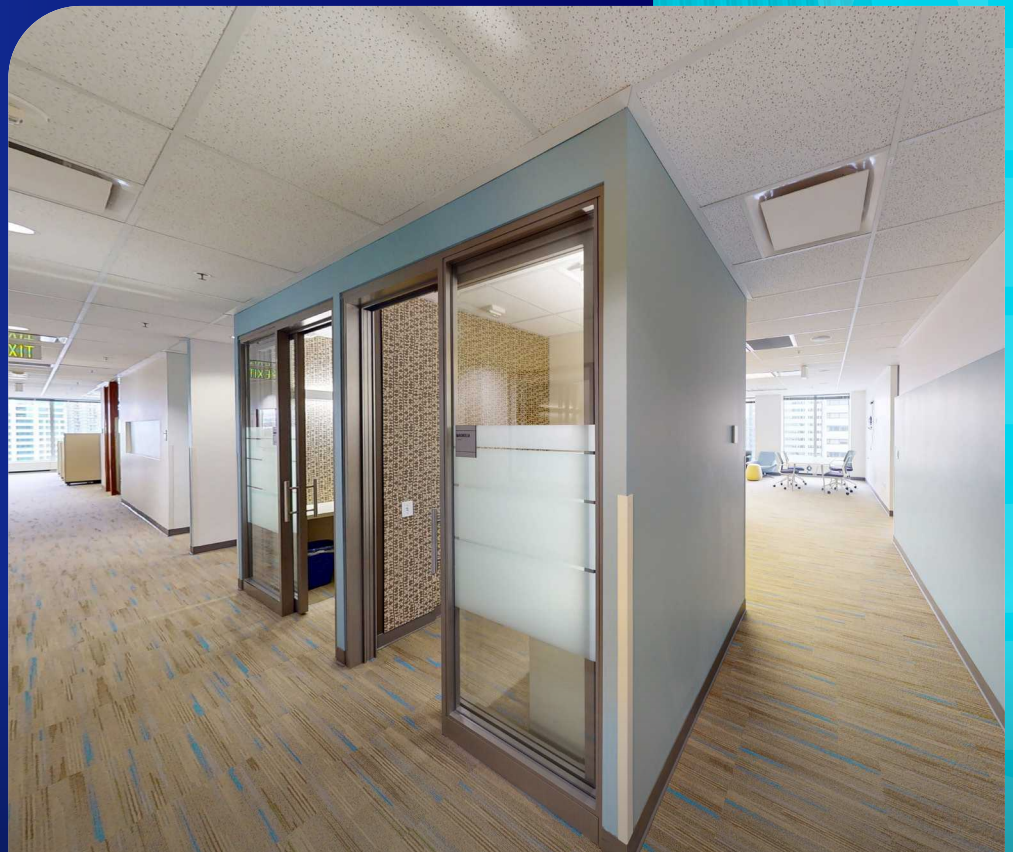
[michael.dash@cbre.com](mailto:michael.dash@cbre.com)

**KATE DASH**

Associate

+1 206 618 1528

[kate.dash@cbre.com](mailto:kate.dash@cbre.com)



© 2026 CBRE, Inc. All rights reserved. This information has been obtained from sources believed reliable but has not been verified for accuracy or completeness. CBRE, Inc. makes no guarantee, representation or warranty and accepts no responsibility or liability as to the accuracy, completeness, or reliability of the information contained herein. You should conduct a careful, independent investigation of the property and verify all information. Any reliance on this information is solely at your own risk. CBRE and the CBRE logo are service marks of CBRE, Inc. All other marks displayed on this document are the property of their respective owners, and the use of such marks does not imply any affiliation with or endorsement of CBRE. BSO\_5.5.26

**CBRE**