

OFFICE LEASE LOCATION

1700 HUDSON ST
STE 300
LONGVIEW WA 98632

PER
MONTH
PLUS NNN

**CALL FOR
RATES**

BUILDING
SIZE

SF 7,932



ABOUT THE PROPERTY

Offered for the first time in decades, this premier third-floor office suite presents a rare opportunity in Longview's sought-after Civic Circle. Spanning 7,932 sq ft, it features high-end finishes and an efficient executive layout. A direct elevator entry leads to an impressive reception area with park and skyline views. The suite includes 13 large private offices, 12 workstations, and three glass-walled conference rooms. Additional amenities include two multi-stall restrooms and a spacious kitchen/breakroom. The building offers ample on-site parking, dual street frontage, and strong visibility ideal for firms seeking prestige and convenience. Contact us for pricing or a private tour.

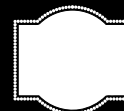
PROPERTY DETAIL



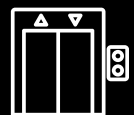
CLOSE TO
INTERSTATE 5



AMPLE
PARKING



EXCELLENT
VISIBILITY



DIRECT ELEVATOR
ACCESS



woodfordcre.com



chris@woodfordcre.com

GET IN TOUCH

Chris Roewe
Owner/Broker

Lindsay Johnson
Licensed Assistant



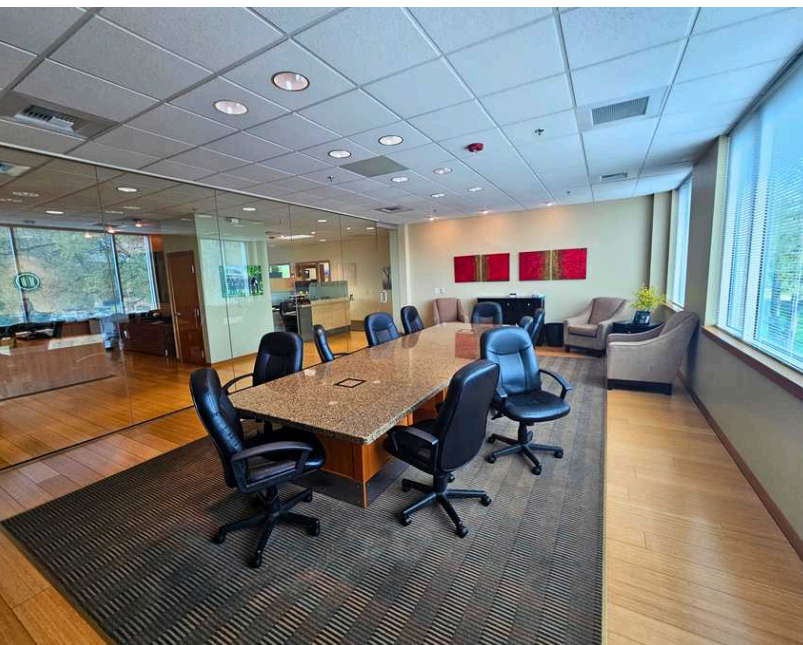
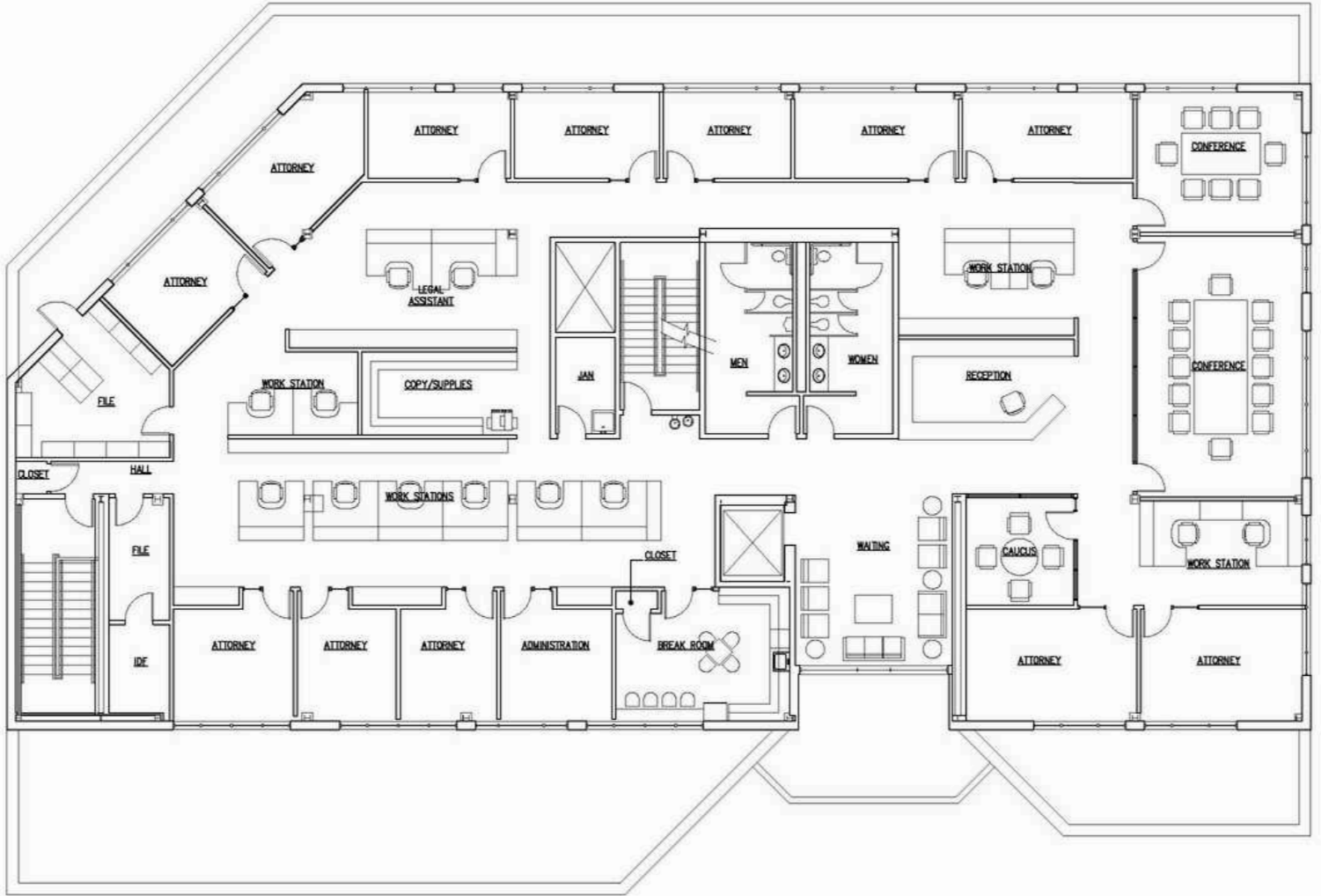
(360) 501-5500






lindsay@woodfordcre.com



OFFICE FOR LEASE



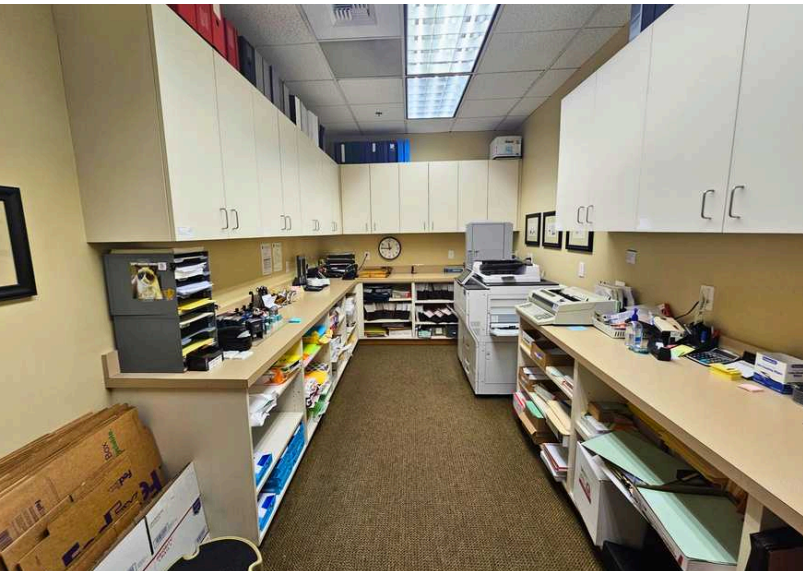
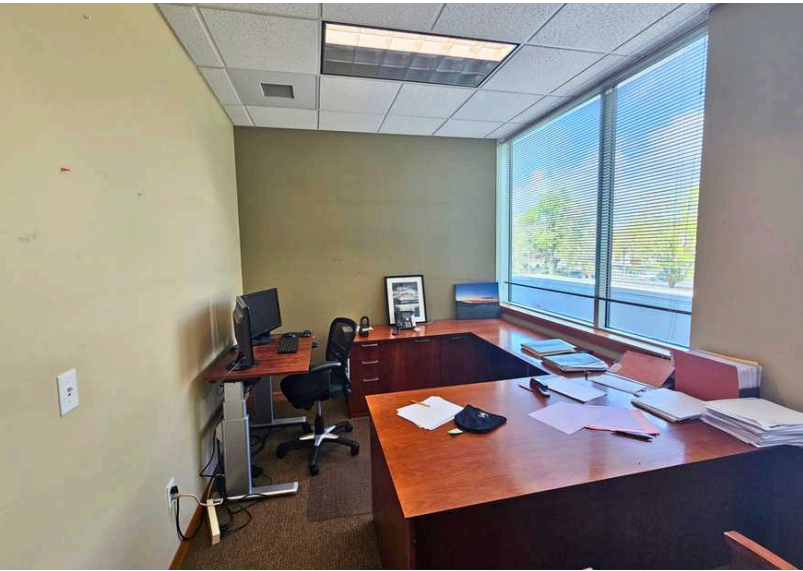
 woodfordcre.com  (360) 501-5500  208 Vine St, Kelso WA

The information contained herein has been obtained from sources we understand to be reliable. Whilst we do not doubt its accuracy it has not been verified & we make no guarantees, warranty, or representations about it. Any projections, opinions, assumptions or estimates used are for example only. You & your advisors should conduct a careful independent investigation of the property to determine the property's satisfaction to your needs.
© Woodford Commercial Real Estate.






OFFICE FOR LEASE




 woodfordcre.com


 chris@woodfordcre.com

GET IN TOUCH

Chris Roewe
Owner/Broker

Lindsay Johnson
Licensed Assistant

 (360) 501-5500

 lindsay@woodfordcre.com