



PROPERTY INFORMATION

The Banner Bank Building is centrally located on the corner of Riverside and Post, across from Riverpark Square and a short walk to Riverfront Park and the Spokane River. Tenants enjoy easy access to shopping, dining, and entertainment.

AVAILABLE SPACES

SPACE	LEASE RATE	SIZE (SF)
Suite 301	\$26.00 SF/yr	2,094 SF

PROPERTY FEATURES

- Distinctive Office Space in the Heart of Downtown
- Updated Building & Amenities
- Class A Office Space
- Full Service Lease
- Wonderful Natural Light and Modern Finishes
- Suite 301 includes 4 offices, 1 conference room, a kitchenette and access to a rooftop sports court and seating area.

Goodale & Barbieri Company
818 West Riverside #300
Spokane, WA 99201
www.g-b.com

Alicia Barbieri | Vice President
509.344.4902 // abarbieri@g-b.com

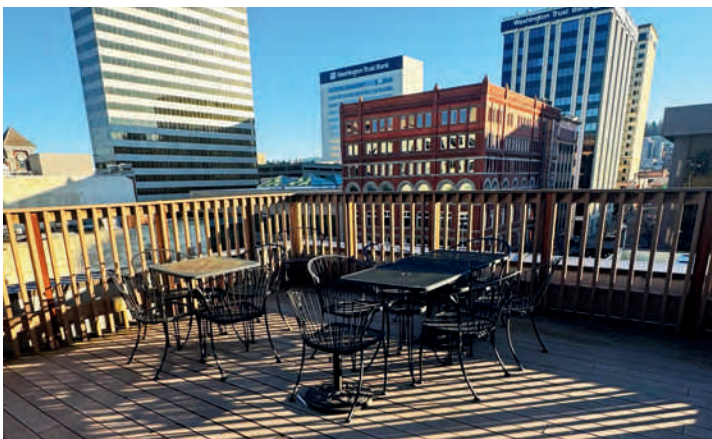
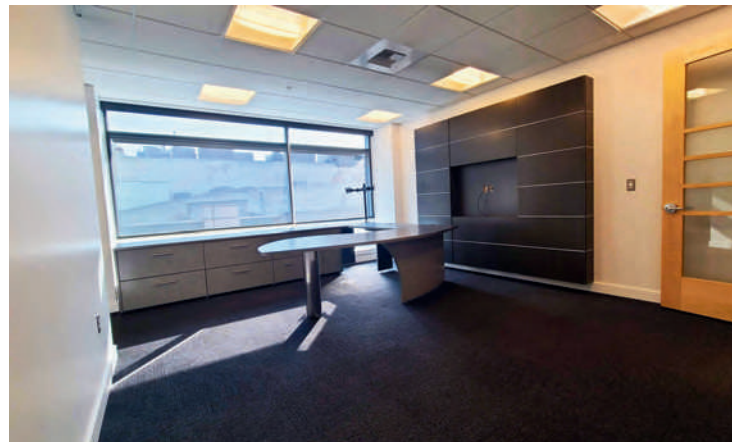
JJ Robbins | Commercial Broker & Leasing Manager
509.344.4915 // jj.robbins@g-b.com

1



ROOFTOP SPORT COURT

+ LOCKER ROOM



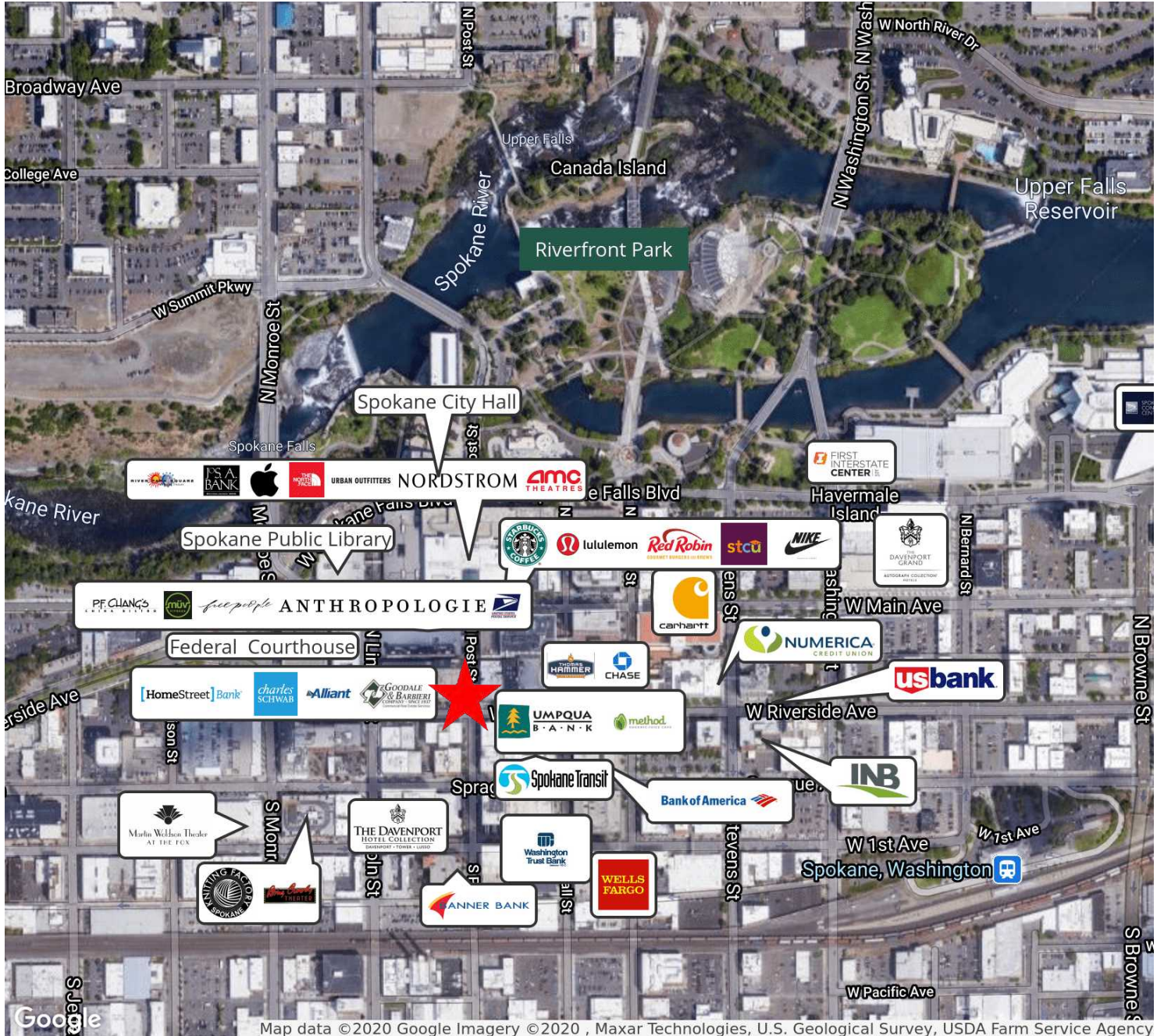
SPACIOUS OFFICES AND LOBBY AREA

Goodale & Barbieri Company
818 West Riverside #300 Spokane, WA 99201
www.g-b.com

Alicia Barbieri | Vice President
509.344.4902 // abarbieri@g-b.com

JJ Robbins | Commercial Broker & Leasing Manager
509.344.4915 // jj.robbins@g-b.com

2



Warranty: Goodale & Barbieri Company does not guarantee, warrant, either expressed or implied, any information supplied by the Seller. Buyer should rely on his own verification of this information as a part of their own due diligence. Copyright: We respect the intellectual property of others. If you believe that your work has been copied in a way that constitutes copyright infringement please contact us immediately.

Goodale & Barbieri Company
818 West Riverside #300
Spokane, WA 99201
www.g-b.com

Alicia Barbieri | Vice President
509.344.4902 // abarbieri@g-b.com

JJ Robbins | Commercial Broker & Leasing Manager
509.344.4915 // jj.robbs@g-b.com

