



TOTEM VALLEY BUSINESS PARK

*2,038 SF Office Space Available
for Sublease in Kirkland, WA*

12919 NE 126TH PL, KIRKLAND, WA 98034

TOTEM VALLEY BUSINESS PARK, BUILDING C

PROPERTY OVERVIEW

ADDRESS	12919 NE 126th Pl Kirkland, WA 98034
SUITE A TOTAL SF	2,038 SF
OFFICE SF	1,365 SF
WAREHOUSE SF	673 SF
DOORS	1 Grade-level door 1 Double man-door
AVAILABILITY	Available Now
LEASE RATE	Below-market rental rates
SUBLEASE TERM	Sublease term through April 30, 2028

5 MIN

DRIVE TO
I-405

6 MIN

DRIVE TO
TOTEM LAKE VILLAGE

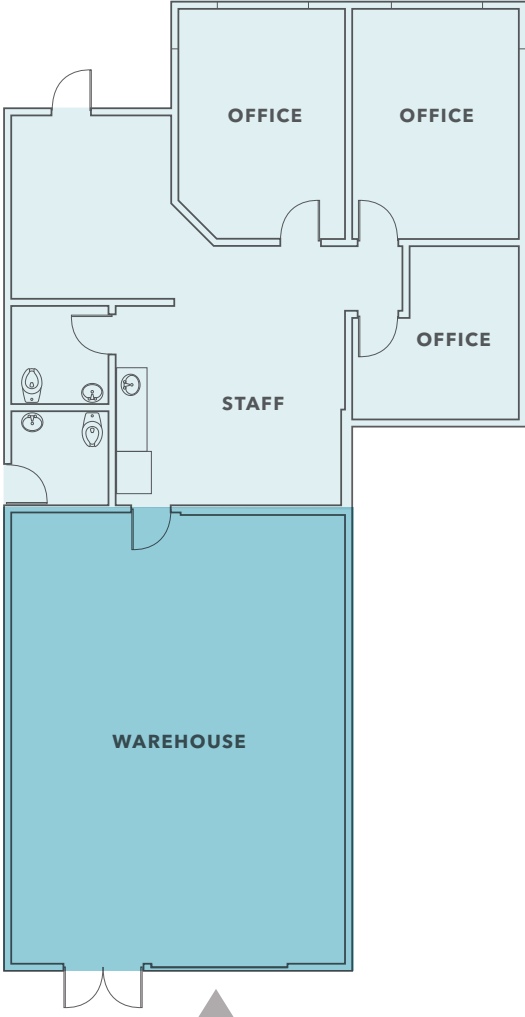


TOTEM VALLEY BUSINESS PARK, BUILDING C



FLOOR PLAN

SUITE A



2,038 SF

TOTAL AVAILABLE

1,365 SF

OFFICE

673 SF

WAREHOUSE

▲ Grade level loading





TOTEM VALLEY BUSINESS PARK

*For more information on
this property, please contact*

JACK ALBRECHT
425.450.1114
jack.albrecht@kidder.com

KIDDER.COM

This information supplied herein is from sources we deem reliable. It is provided without any representation, warranty, or guarantee, expressed or implied as to its accuracy. Prospective Buyer or Tenant should conduct an independent investigation and verification of all matters deemed to be material, including, but not limited to, statements of income and expenses. Consult your attorney, accountant, or other professional advisor. All Kidder Mathews designs are the sole property of Kidder Mathews. Branded materials and layouts are not authorized for use by any other firm or person.

