

68,243 SF Available

# 1601 SECOND

1601 2ND AVENUE | SEATTLE, WA



**NEWMARK**

[1601second.com](http://1601second.com)

# One Building Endless Possibilities

1601 2nd is a highly versatile space that can accommodate a wide variety of businesses and institutions with its customizable floor plans and ample square footage.

Situated only steps away from Pike Place Market and the new waterfront, the building offers prominent signage opportunities to maximize visibility. In addition, secure parking is available nearby, ensuring convenience for tenants and their visitors. Whether it's a technical school, government agency, tech startup, or many organizations in between, 1601 2nd offers a prime location, high visibility, convenient parking, and much more.

## Prime Location



**7K+**  
parking stalls within  
3 blocks



**350K+**  
daytime employees  
within a 15-minute drive



**10M+**  
annual visitors to  
Pike Place Market



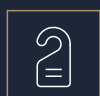
**24K+**  
riders who pass through  
Westlake Station daily



**158K+**  
apartment units within  
walking distance



**41.1M**  
annual number of  
tourists in Seattle



**20K+**  
hotel rooms within  
a 15-minute drive



1601 2ND AVENUE | SEATTLE, WASHINGTON



BIKE STORAGE, SHOWERS, AND LOCKERS



ON-SITE RETAIL



CONFERENCE ROOM



## Historic Architecture Meets Modern Aesthetics

Originally opened in 1906 as the Standard Furniture Company Building, 1601 2nd masterfully celebrates its character and 100+ year history while meeting the demands of today's tenants.

Following a recent comprehensive architectural renovation designed by Olson Kundig, 1601 2nd fuses modern aesthetics with historic architectural character in a bustling, centralized downtown environment, setting a new standard for modern office space.



# Building Availabilities

Full Floor and Partial Floor  
Options Available

Floor 10 | 11,790 RSF

---

Floor 9 | 11,788 RSF

---

Floor 8 | Leased

---

Floor 7 | 4,661 RSF

---

Floor 6 | 11,790 RSF

---

Floor 5 | 4,807 RSF

---

Floor 4 | 11,795 RSF

---

Floor 3 | 11,612 RSF

---

Floor 2 | Leased

---

**68,243 SF Available**

+ Prominent Signage Opportunities

---



STUNNING WATERFRONT VIEWS



HIGH CEILINGS AND EXPOSED HISTORIC STRUCTURE

## Quintessential Seattle Location

1601 2nd is ideally located near Pike Place Market and Seattle's CBD. Offering a birds-eye-view of one of the world's most recognizable urban neighborhoods, the building is steps away from the future overlook walk connecting Pike Place to the redeveloping Waterfront.

# Direct Waterfront Access, Plus:

2 Blocks To Light Rail

100 Transit Score

98 Walk Score

75+ Dining Options Within 1/4 Mile

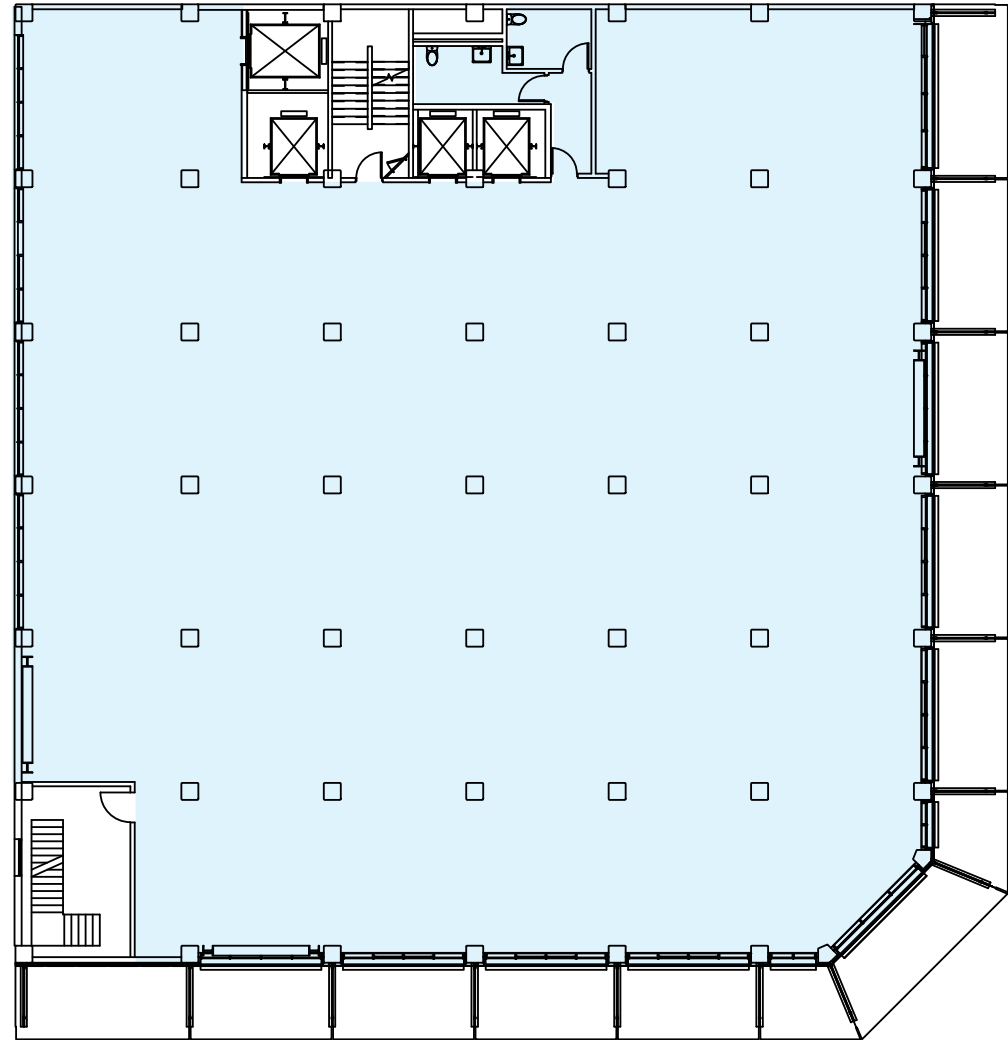
100+ Retail Options Within 1/4 Mile



# 1601 SECOND

1601 2ND AVENUE | SEATTLE, WA

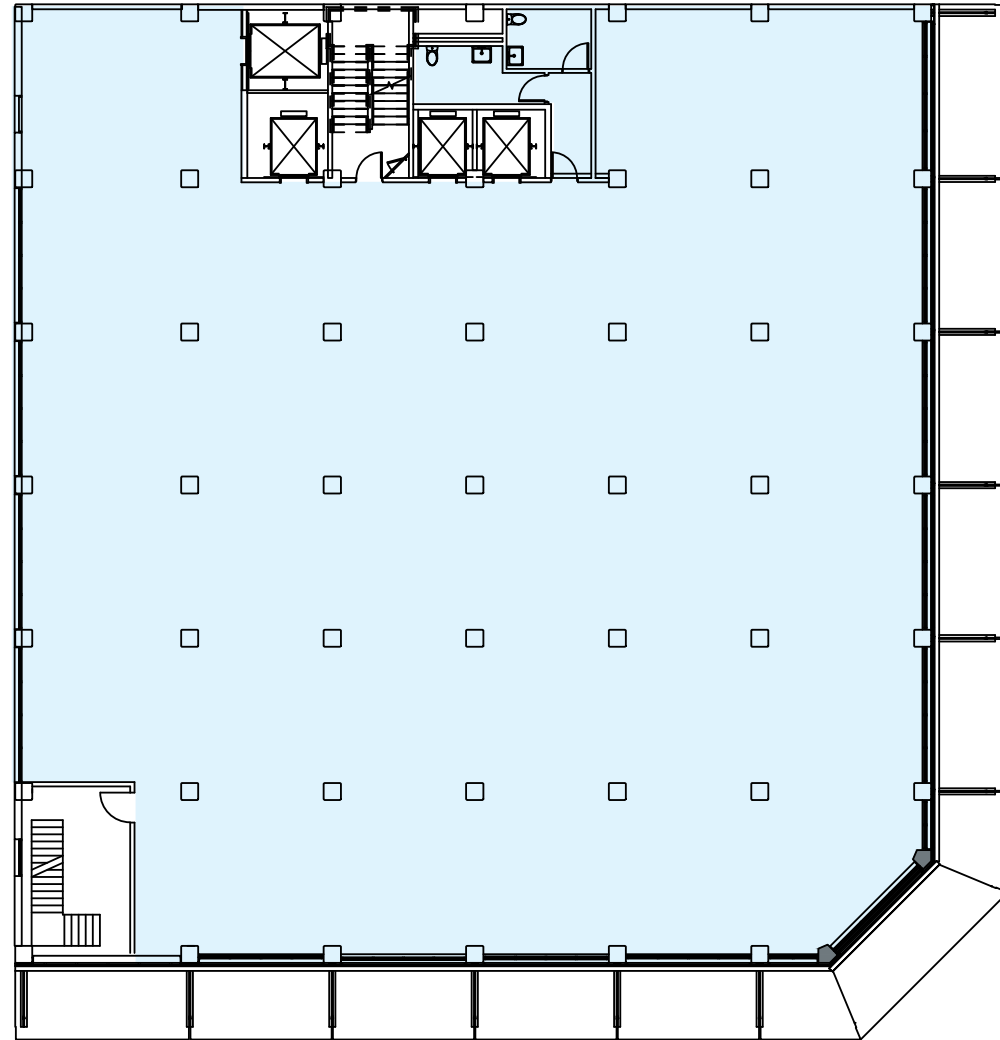
**Floor 3**  
**11,612 RSF**



# 1601 SECOND

1601 2ND AVENUE | SEATTLE, WA

**Floor 4**  
**11,795 RSF**



# 1601 SECOND

1601 2ND AVENUE | SEATTLE, WA

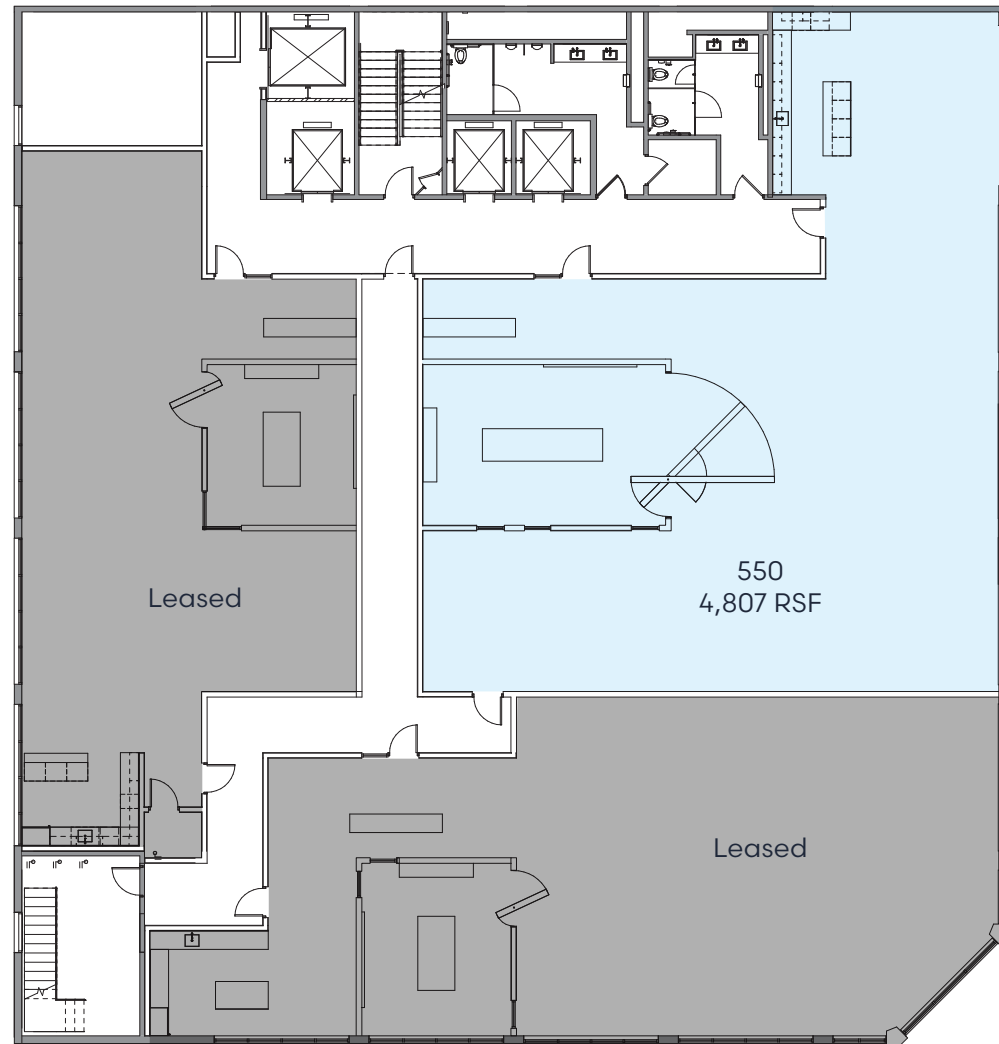
## Floor 5

Move-In Ready Spec Suites

### Space Options

**Suite 550**  
4,807 RSF

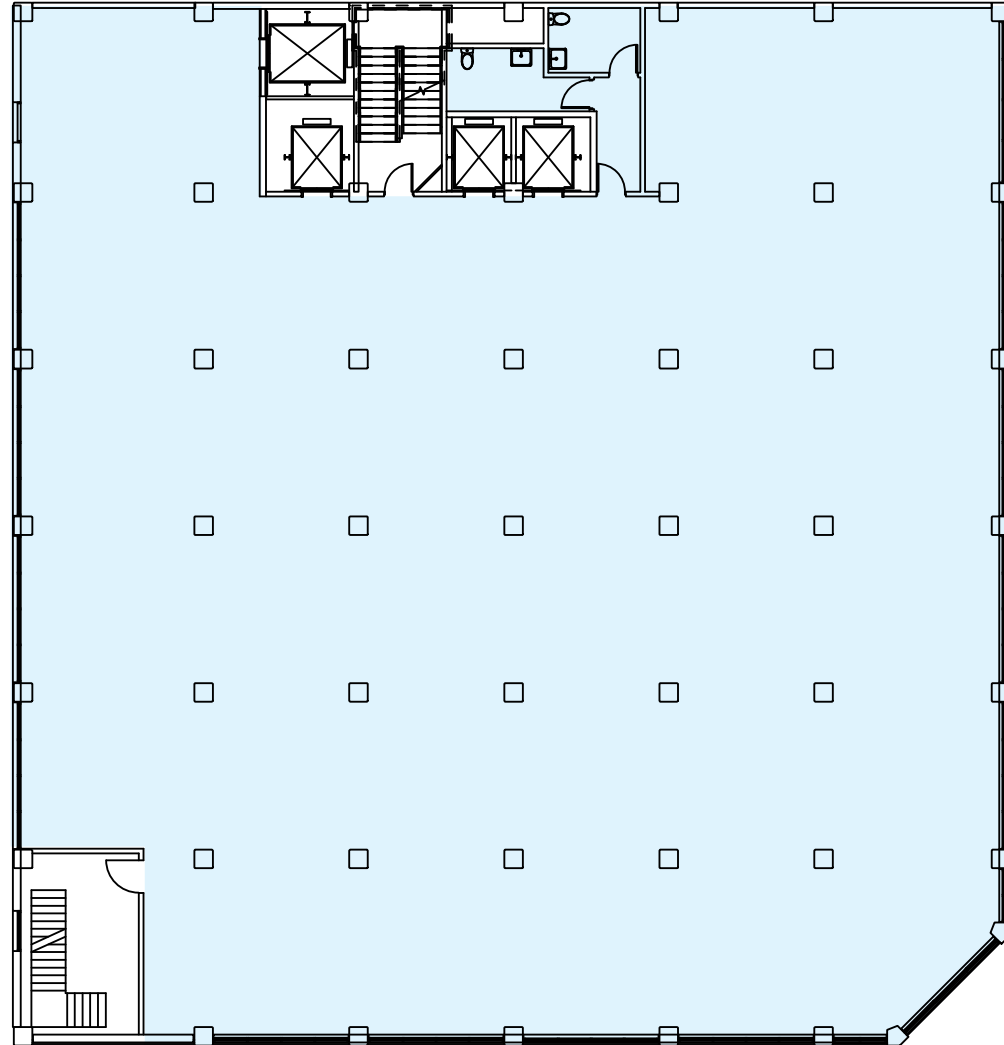
[CLICK FOR VIRTUAL TOUR](#)



# 1601 SECOND

1601 2ND AVENUE | SEATTLE, WA

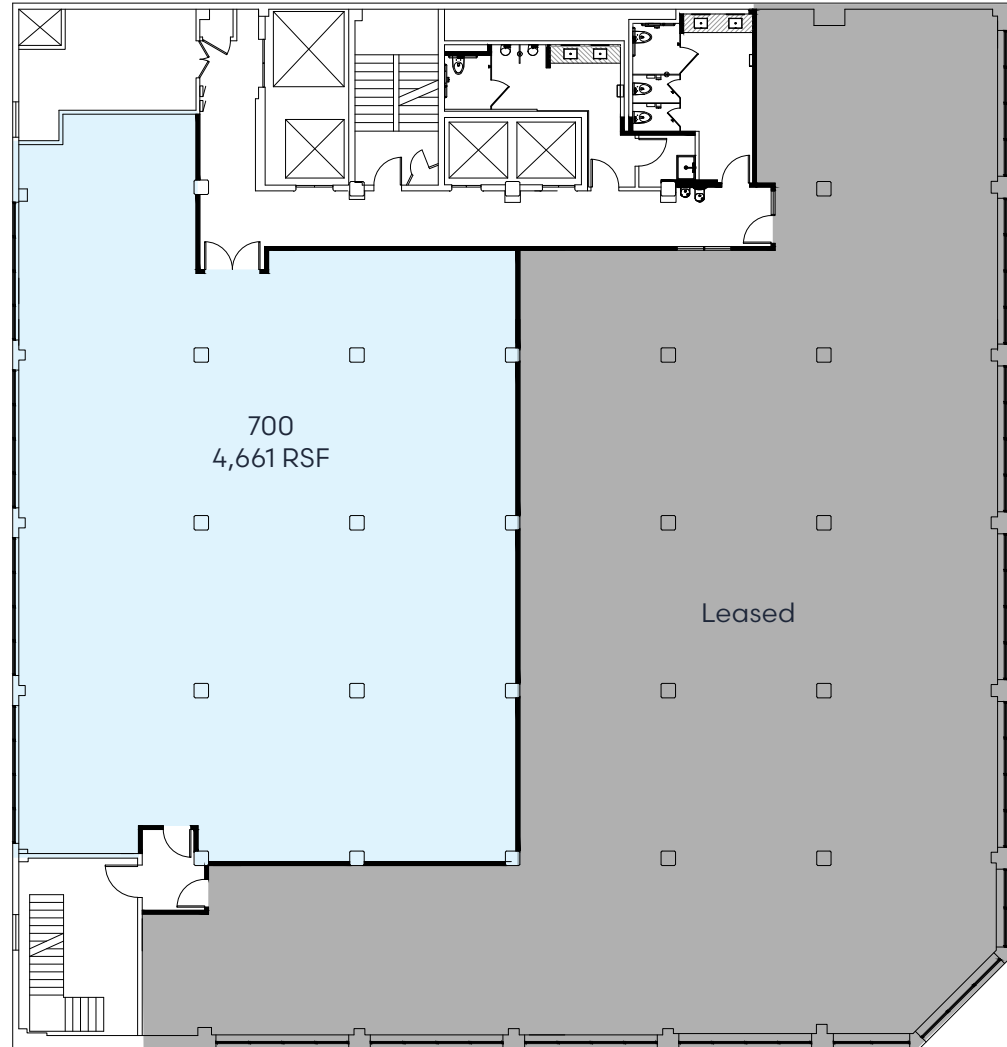
Floor 6  
11,790 RSF



# 1601 SECOND

1601 2ND AVENUE | SEATTLE, WA

**Floor 7**  
**4661 RSF**



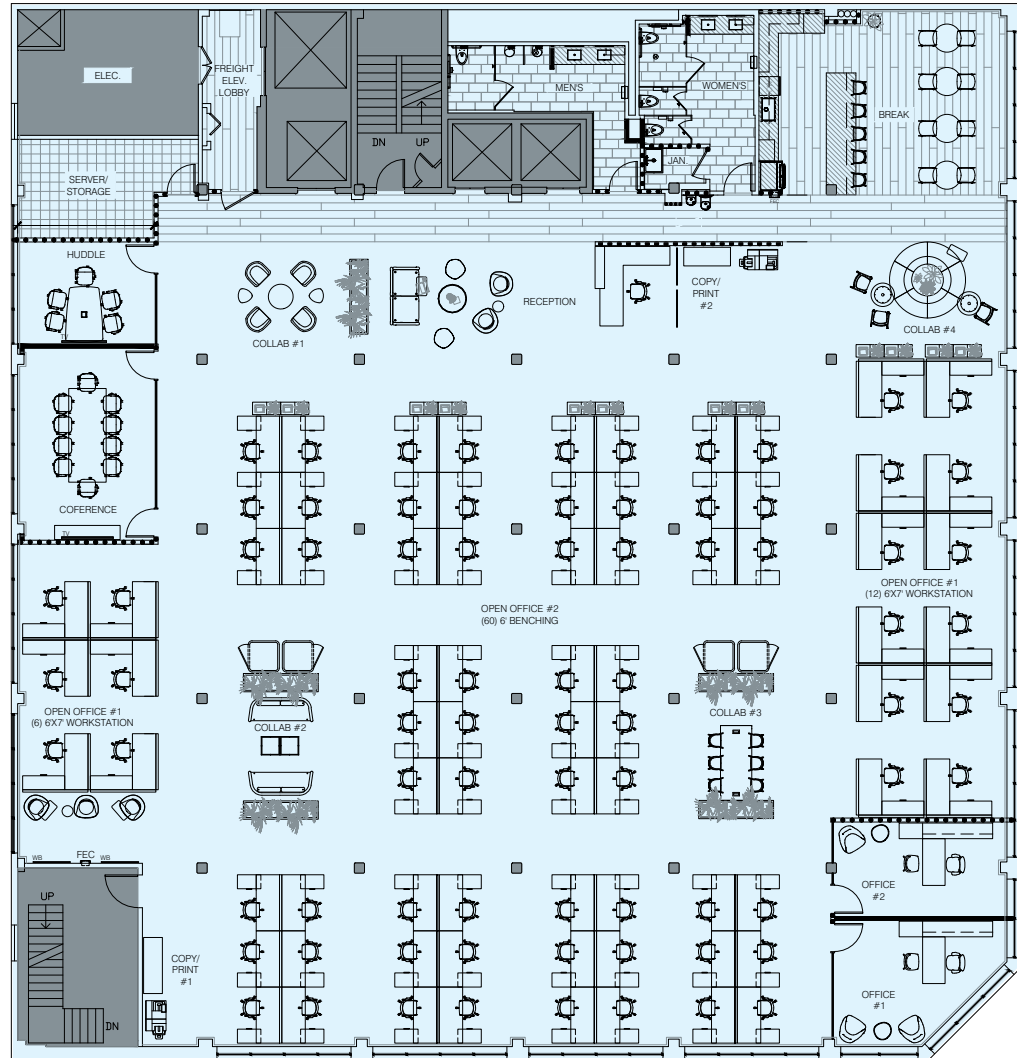
# 1601 SECOND

1601 2ND AVENUE | SEATTLE, WA

## Floor 9

### 11,788 RSF

Proposed Furniture Layout



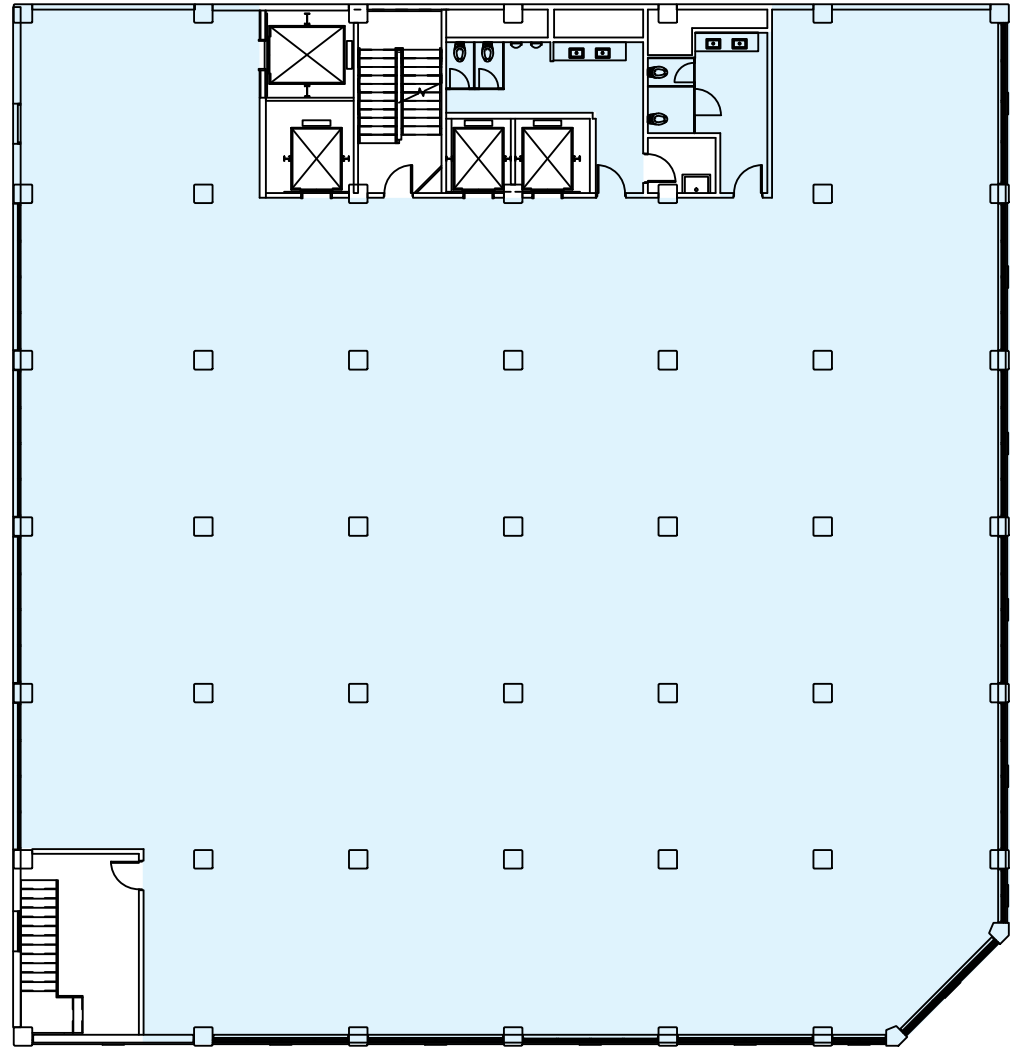
# 1601 SECOND

1601 2ND AVENUE | SEATTLE, WA

---

**Floor 10**  
**11,790 RSF**

---



# 1601 SECOND

1601 2ND AVENUE | SEATTLE, WA

FOR MORE INFORMATION CONTACT

**CAVAN O'KEEFE**

Executive Managing Director  
206.395.2903  
cavan.okeefe@nmrk.com

**DANIEL SEGER**

Senior Managing Director  
206.487.5163  
daniel.seger@nmrk.com

**BRODY O'KEEFE**

Director  
206.453.1463  
brody.okeefe@nmrk.com

**NEWMARK**

[www.nmrk.com](http://www.nmrk.com)

The distributor of this communication is performing acts for which a real estate license is required. The information contained herein has been obtained from sources deemed reliable but has not been verified and no guarantee, warranty or representation, either express or implied, is made with respect to such information. Terms of sale or lease and availability are subject to change or withdrawal without notice. [www.nmrk.com](http://www.nmrk.com) MP-1607 • 10/25

[1601second.com](http://1601second.com)