

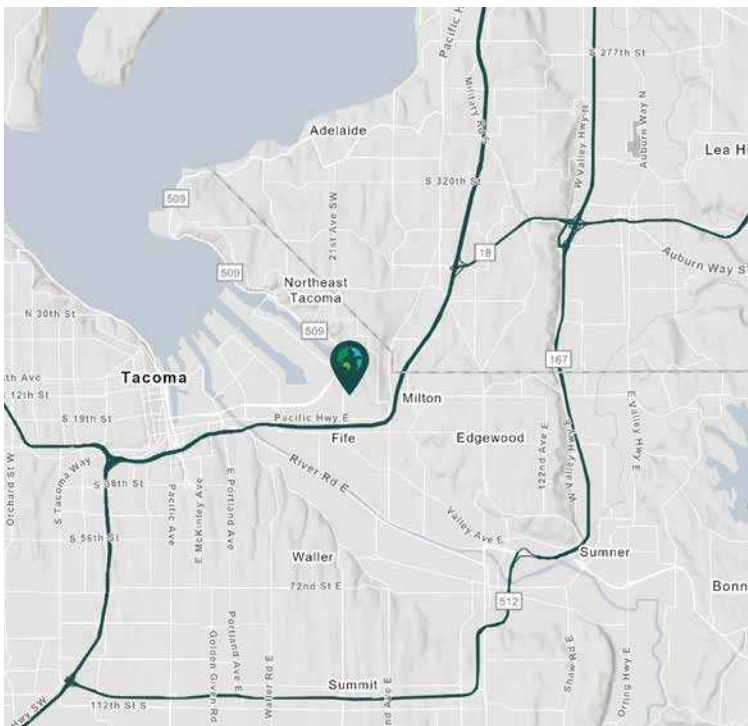
INDUSTRIAL SPACE FOR LEASE



62,964 SF

5555 8th St E  
Fife, WA 98424 USA

Prologis Park Tacoma 18



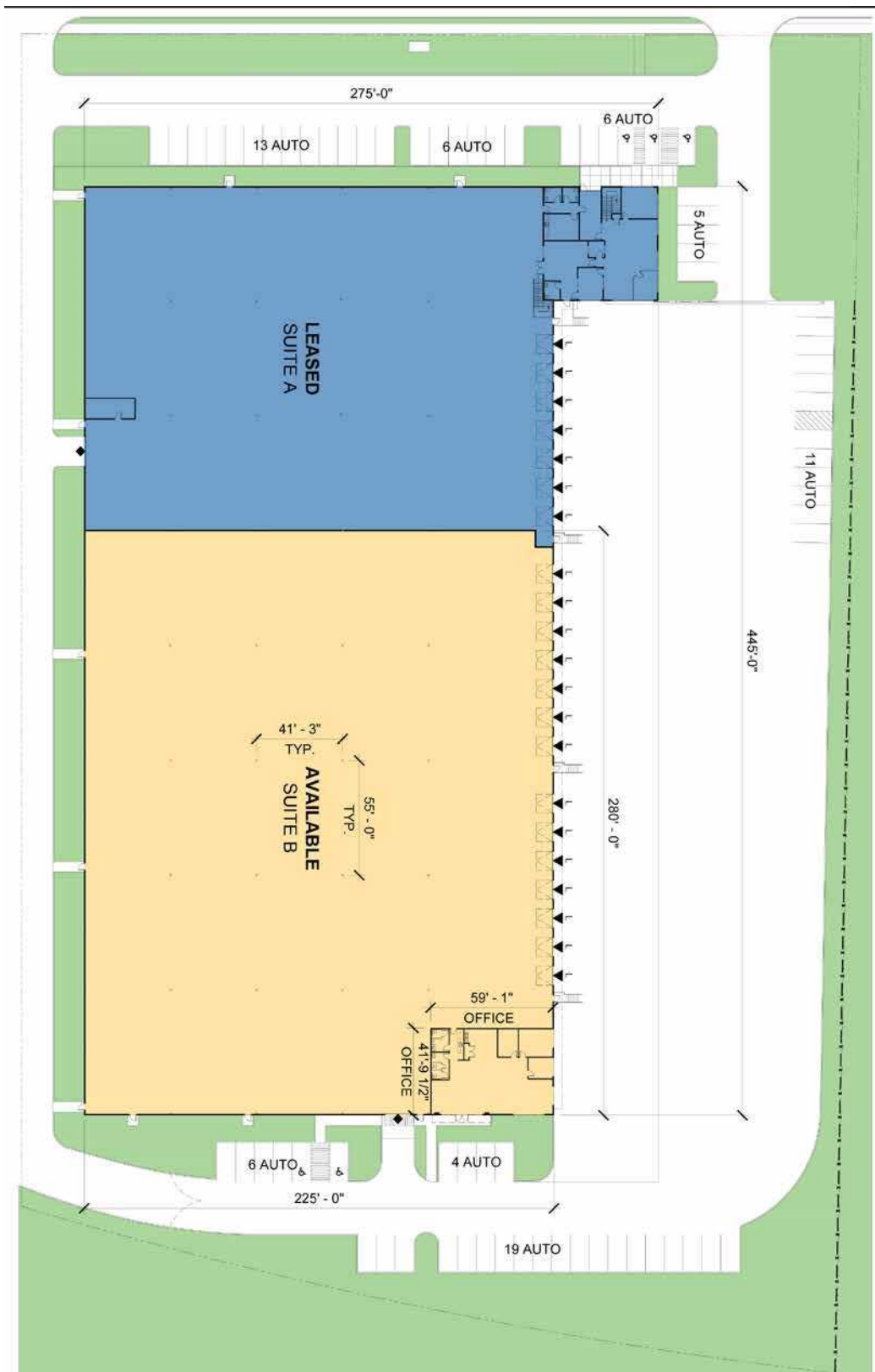
## Property Features

Available Date	September 1, 2026
Available Space	62,964 Shell SF
Office SF	2,720 SF
Clear Height	28' - 30'
Dock High Doors	14
Dock Levelers	Yes
Power	3 Phase
Sprinklers	ESFR
Drive-in Doors	1
Car Parking Spaces	29
Truck Court	Ample

- Excellent access to I-5 and SR-167 and 509
- One minute drive to Port of Tacoma

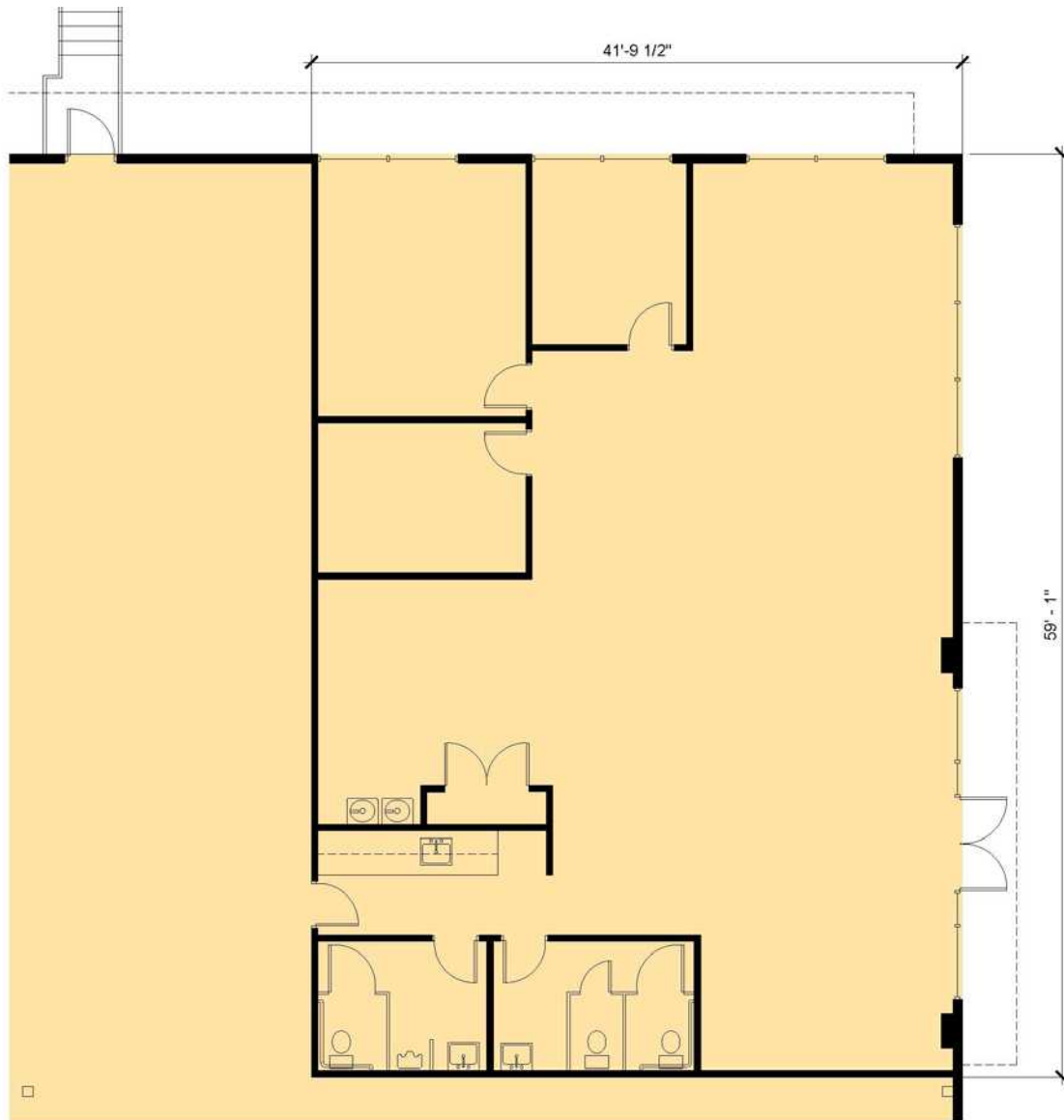


Unlock the full potential of your warehouse with one strategic, single-source partner.





Unlock the full potential of your warehouse with one strategic, single-source partner.



**SUITE B OFFICE PLAN**  
1/8" = 1'-0"



**Kidder Mathew  
Todd Clarke**

todd.clarke@kidder.com  
ph +1 253 722 1422  
cell + 1 253 381 5500

**Kidder Mathew  
Ty Clarke**

ty.clarke@kidder.com  
ph +1 253 722 1419  
cell + 1 253 720 2211

**Kidder Mathew  
Hunter Clarke**

hunter.clarke@kidder.com  
ph +1 253 722 1454  
cell + 1 253 549 5517

**KBC Advisors  
Matt Wood**

mattwood@kbcadvisors.com  
ph +1 206 741 1030  
cell + 1 206 595 6814