

FREMONT OFFICE/WAREHOUSE/LAB

FOR LEASE

*A Three-Story Freestanding Building Available for Lease
in Fremont*

3958 6TH AVENUE NW | SEATTLE, WA

11,699 SF

TOTAL, DIVISIBLE

AVAILABLE

NOW

3958 6TH AVE NW

PROPERTY FEATURES

Freestanding building

11,699 SF total, divisible

6,199 SF first floor warehouse/mezzanine with 14' clear height

4,550 SF second floor office

950 SF top floor office (with 360 degree views)

1 drive-in loading door

Outstanding territorial views

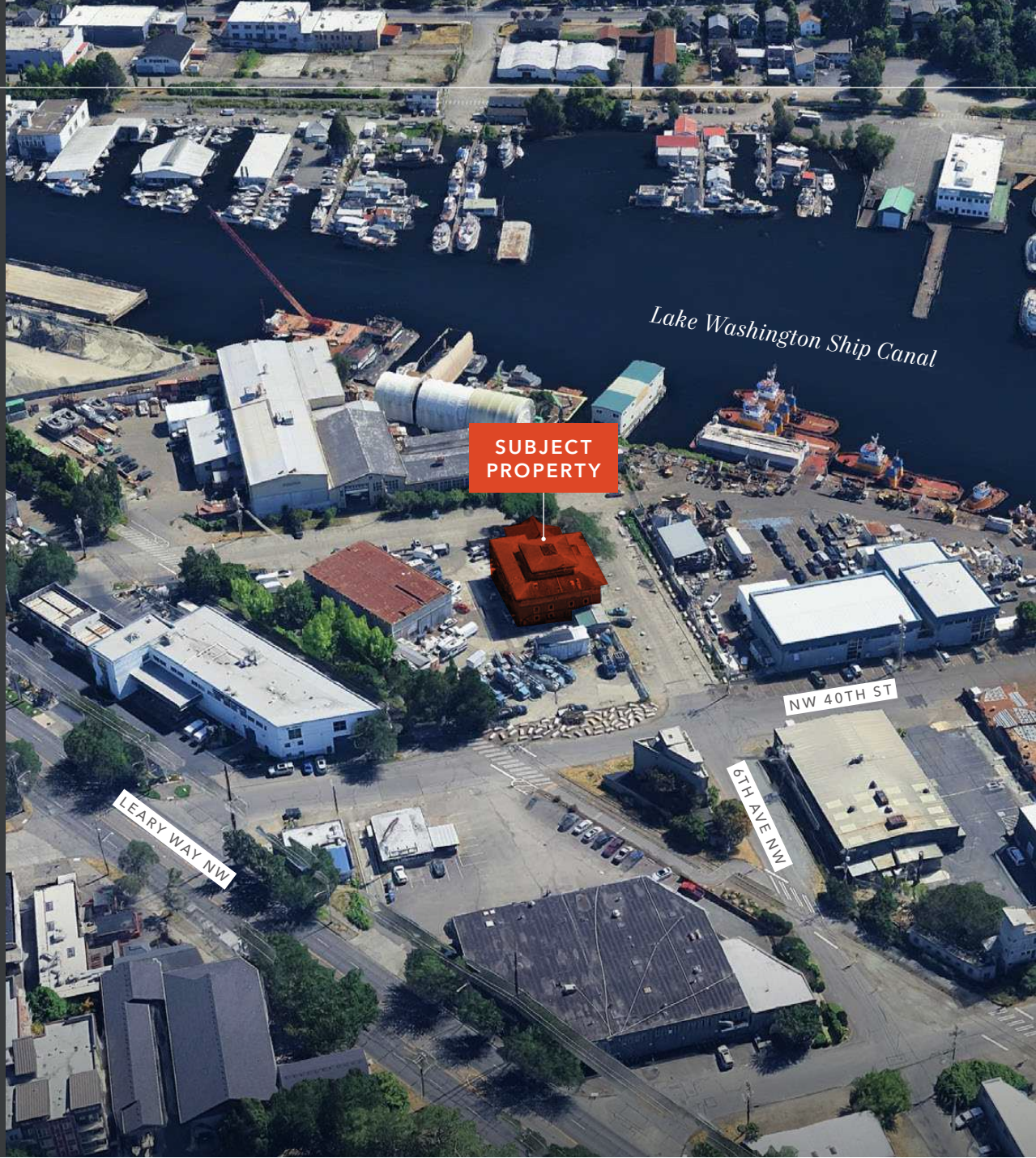
Floors may be leased separately or combined

Potential future yard storage

Off-street parking

Available now

Lease rate: \$1.20 PSF, + NNN



FIRST FLOOR WAREHOUSE & MEZZANINE

6,199 SF

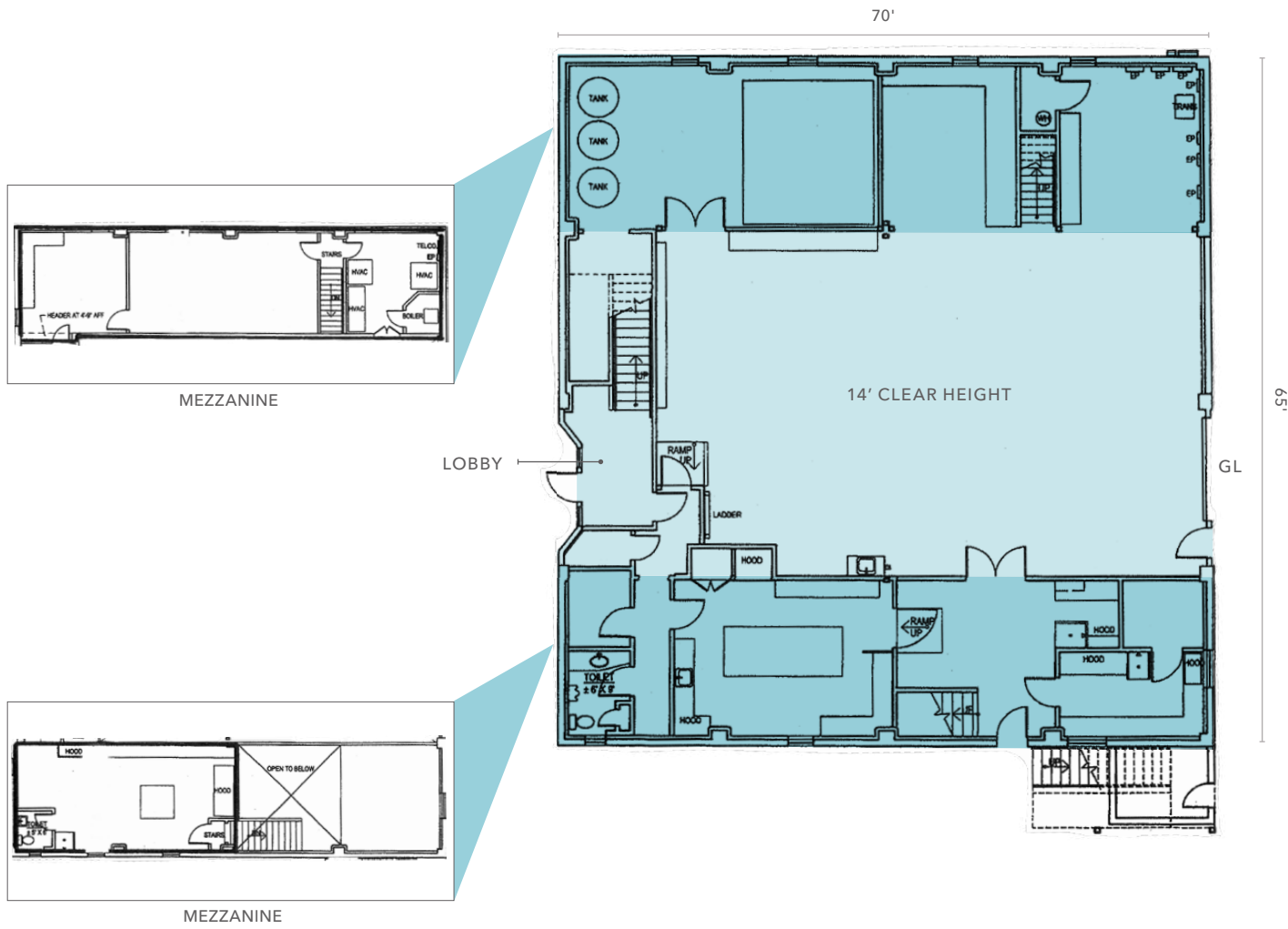
AVAILABLE

\$1.20

LEASE RATE (PSF, + NNN)

NOW

AVAILABLE



LEGEND

- Office
- Warehouse

SECOND FLOOR OFFICE

4,550 SF

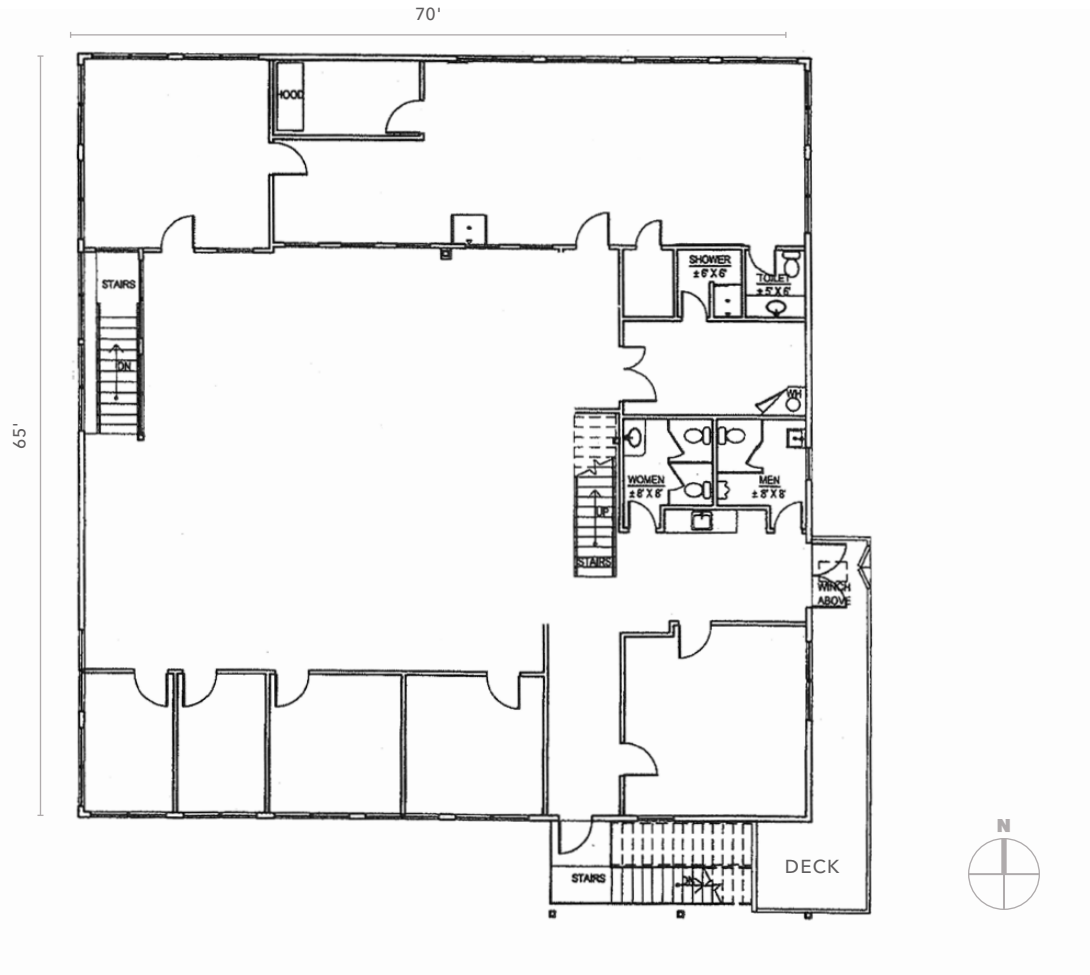
AVAILABLE

\$1.20

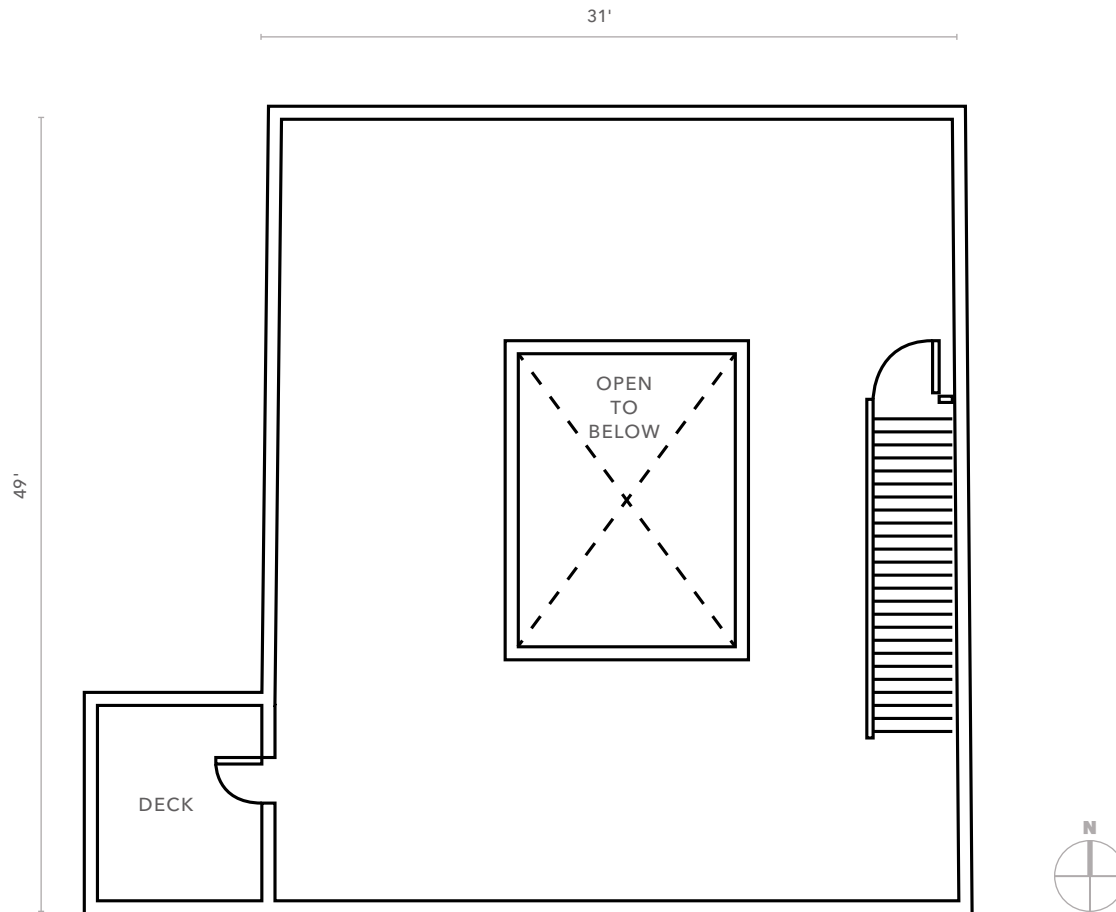
LEASE RATE (PSF, + NNN)

NOW

AVAILABLE



THIRD FLOOR OFFICE



950 SF

AVAILABLE

\$1.20

LEASE RATE (PSF, + NNN)

NOW

AVAILABLE

HIGHLY- ACCESSIBLE LOCATION

Close to Lake Washington Ship Canal,
Woodland Park, and Seattle Pacific
University

Conveniently located near Highway-99, I-5
& 15th Ave NW/Ballard Bridge

Easy for visitors to locate

4 MIN

TO HWY-99

9 MIN

TO I-5

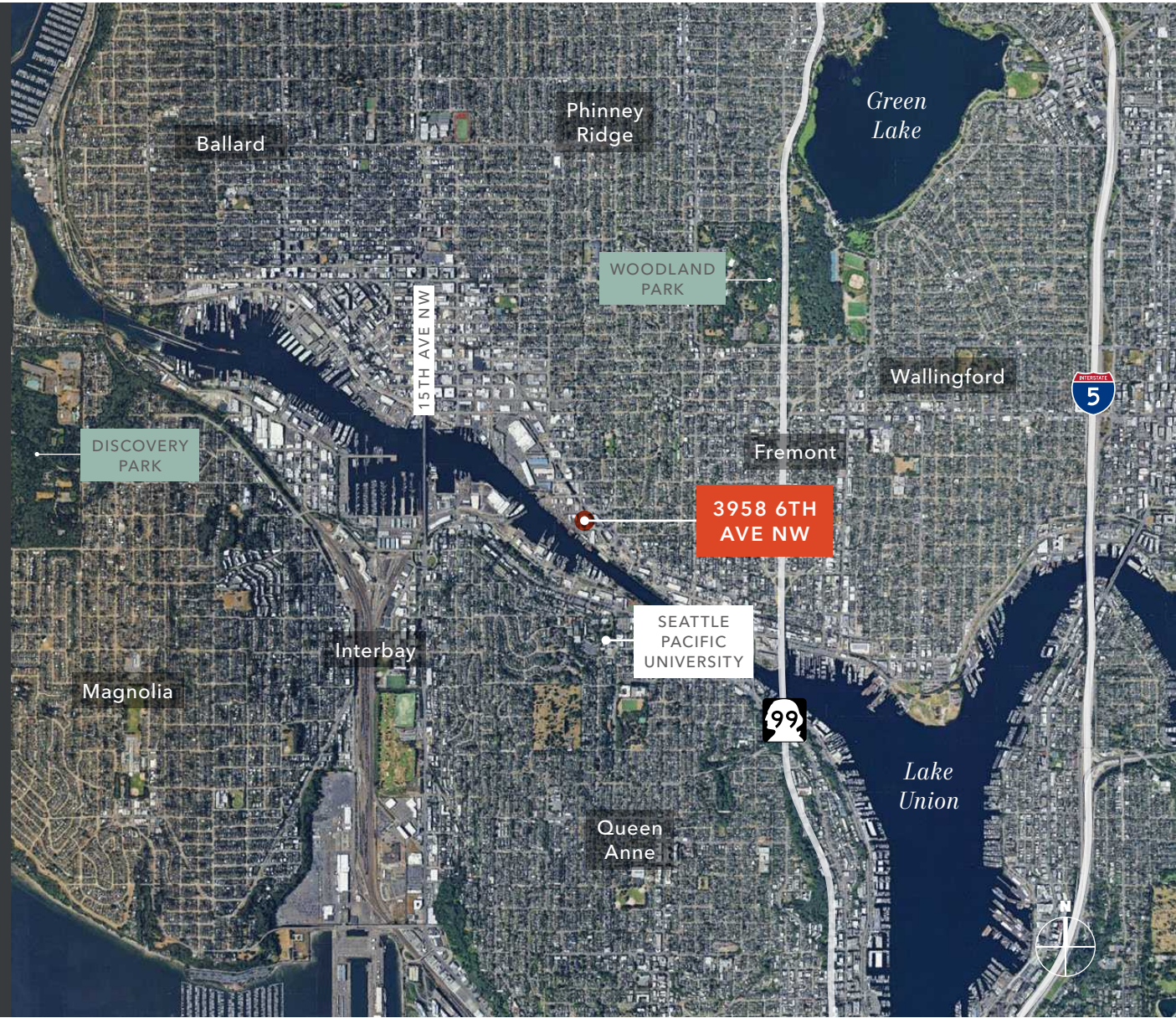




Photo edited for illustrative purposes and may not represent the property's actual condition.

3958 6TH AVENUE NW

For more information on this property, please contact

JEFF LOFTUS
Senior Vice President
206.248.7326
jeff.loftus@kidder.com

KEN HIRATA
Senior Vice President
206.296.9625
ken.hirata@kidder.com

KIDDER.COM

This information supplied herein is from sources we deem reliable. It is provided without any representation, warranty, or guarantee, expressed or implied as to its accuracy. Prospective Buyer or Tenant should conduct an independent investigation and verification of all matters deemed to be material, including, but not limited to, statements of income and expenses. Consult your attorney, accountant, or other professional advisor. All Kidder Mathews designs are the sole property of Kidder Mathews. Branded materials and layouts are not authorized for use by any other firm or person.

