

RIVERFRONT

BUSINESS PARK

16110-16140 WOODINVILLE REDMOND RD NE, WOODINVILLE, WA

CLASS A LIGHT
INDUSTRIAL BUILDINGS



BRODERICK
• GROUP •

CONNOR GILCHRIST

425.274.4286

gilchrist@broderickgroup.com

RAWLEY HOLMBERG

425.274.4284

holmberg@broderickgroup.com

SAMSON TORO

425.274.4289

toro@broderickgroup.com

RIVERFRONT BUSINESS PARK

16110-16140 WOODINVILLE REDMOND RD NE, WOODINVILLE, WA

CLASS A LIGHT INDUSTRIAL BUILDINGS

PROPERTY FEATURES

- Class A light industrial buildings
- 20' clear height
- Convenient Woodinville location
- Strategic access to SR 522 and I-405
- Experienced ownership
- Concrete tilt construction
- ESFR fire suppression
- Parking Ratio: 1.93 per 1,000 SF leased
- Restaurants and shopping center nearby



SITE PLAN

BLDG	SUITE	TOTAL SF	OFFICE SF	WAREHOUSE SF	AVAILABILITY
16110	<u>SUITES 1001+1002</u>	5,300 RSF	1,056 RSF	4,244 RSF	June 1, 2026
16120	<u>SUITE 2010</u>	3,440 RSF	1,526 RSF	1,914 RSF	Immediately
16140	<u>SUITES 4001+4002</u>	5,430 RSF	358 RSF	5,072 RSF	Immediately



CONNOR GILCHRIST
425.274.4286
gilchrist@broderickgroup.com

RAWLEY HOLMBERG
425.274.4284
holmberg@broderickgroup.com

SAMSON TORO
425.274.4289
toro@broderickgroup.com

RIVERFRONT

BUSINESS PARK

CLASS A LIGHT
INDUSTRIAL BUILDINGS

16110-16140 WOODINVILLE REDMOND RD NE, WOODINVILLE, WA

BUILDING 16110 - SUITES 1001/1002

AVAILABLE JUNE 1, 2026

TOTAL SF: 5,300 RSF

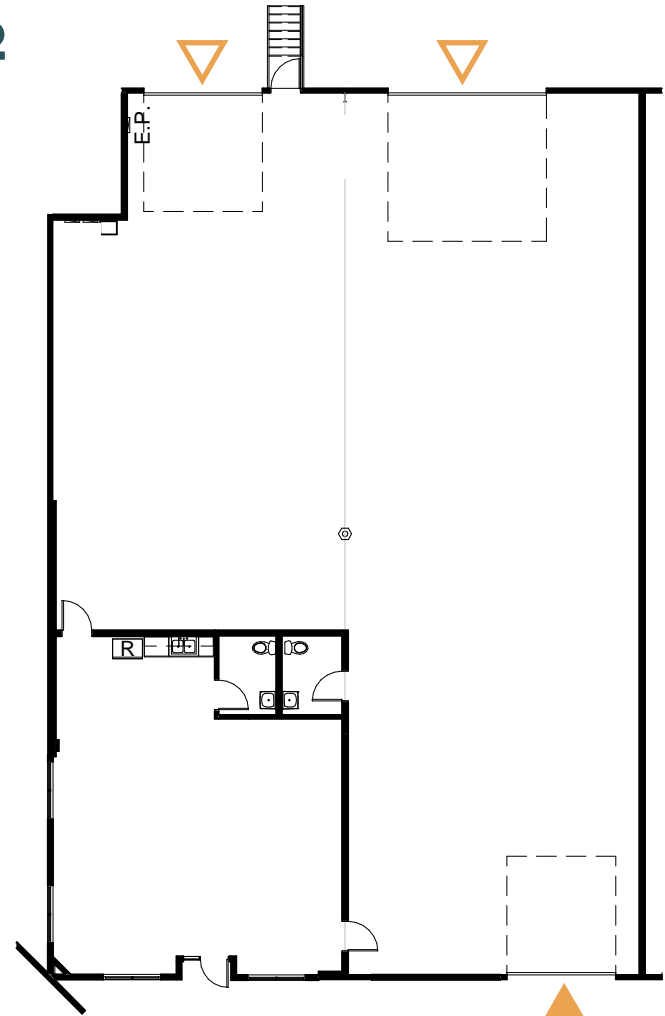
OFFICE SF: 1,056 RSF

WAREHOUSE SF: 4,244 RSF

CLEAR HEIGHT: 20'

LOADING: ONE GRADE LEVEL DOOR
TWO DOCK HIGH DOORS

The information contained herein has been given to us by the owner or sources that we deem reliable. We have no reason to doubt its accuracy, but we do not guarantee it. Prospective tenants should carefully verify all information contained herein.



▲ GRADE LEVEL
△ DOCK HIGH

↑ BACK TO AVAILABLE SPACE

BRODERICK
GROUP

CONNOR GILCHRIST
425.274.4286
gilchrist@broderickgroup.com

RAWLEY HOLMBERG
425.274.4284
holmberg@broderickgroup.com

SAMSON TORO
425.274.4289
toro@broderickgroup.com

RIVERFRONT BUSINESS PARK

16110-16140 WOODINVILLE REDMOND RD NE, WOODINVILLE, WA

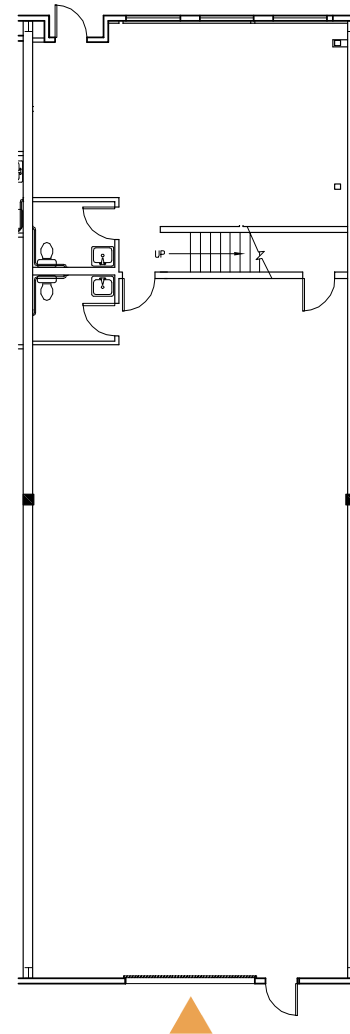
CLASS A LIGHT INDUSTRIAL BUILDINGS

BUILDING 16120 - SUITE 2010

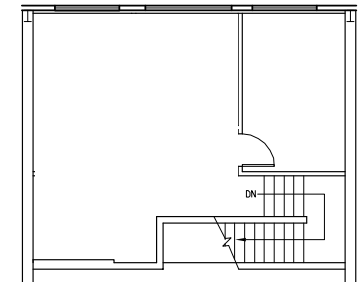
AVAILABLE IMMEDIATELY

TOTAL SF:	3,440 RSF
OFFICE SF:	1,520 RSF
WAREHOUSE SF:	1,920 RSF
CLEAR HEIGHT:	20'
LOADING:	ONE GRADE LEVEL DOOR

The information contained herein has been given to us by the owner or sources that we deem reliable. We have no reason to doubt its accuracy, but we do not guarantee it. Prospective tenants should carefully verify all information contained herein.



2ND FLOOR OFFICE



↑ BACK TO AVAILABLE SPACE



CONNOR GILCHRIST
425.274.4286
gilchrist@broderickgroup.com

RAWLEY HOLMBERG
425.274.4284
holmberg@broderickgroup.com

SAMSON TORO
425.274.4289
toro@broderickgroup.com

RIVERFRONT BUSINESS PARK

16110-16140 WOODINVILLE REDMOND RD NE, WOODINVILLE, WA

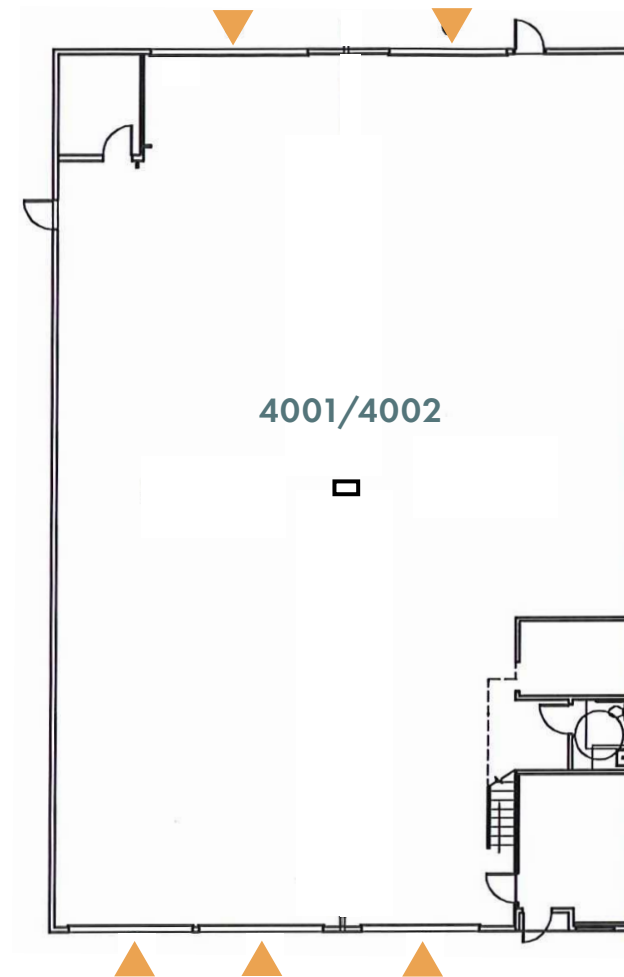
CLASS A LIGHT INDUSTRIAL BUILDINGS

BUILDING 16140 - SUITE 4001/4002

AVAILABLE IMMEDIATELY

TOTAL SF:	5,430 RSF
OFFICE SF:	358 RSF
WAREHOUSE SF:	5,072 RSF
CLEAR HEIGHT:	20'
LOADING:	FIVE GRADE LEVEL DOORS

The information contained herein has been given to us by the owner or sources that we deem reliable. We have no reason to doubt its accuracy, but we do not guarantee it. Prospective tenants should carefully verify all information contained herein.



[↑ BACK TO AVAILABLE SPACE](#)



CONNOR GILCHRIST
425.274.4286
gilchrist@broderickgroup.com

RAWLEY HOLMBERG
425.274.4284
holmberg@broderickgroup.com

SAMSON TORO
425.274.4289
toro@broderickgroup.com

RIVERFRONT BUSINESS PARK

CLASS A LIGHT INDUSTRIAL BUILDINGS

16110-16140 WOODINVILLE REDMOND RD NE, WOODINVILLE, WA



BRODERICK
• GROUP •

CONNOR GILCHRIST
425.274.4286
gilchrist@broderickgroup.com

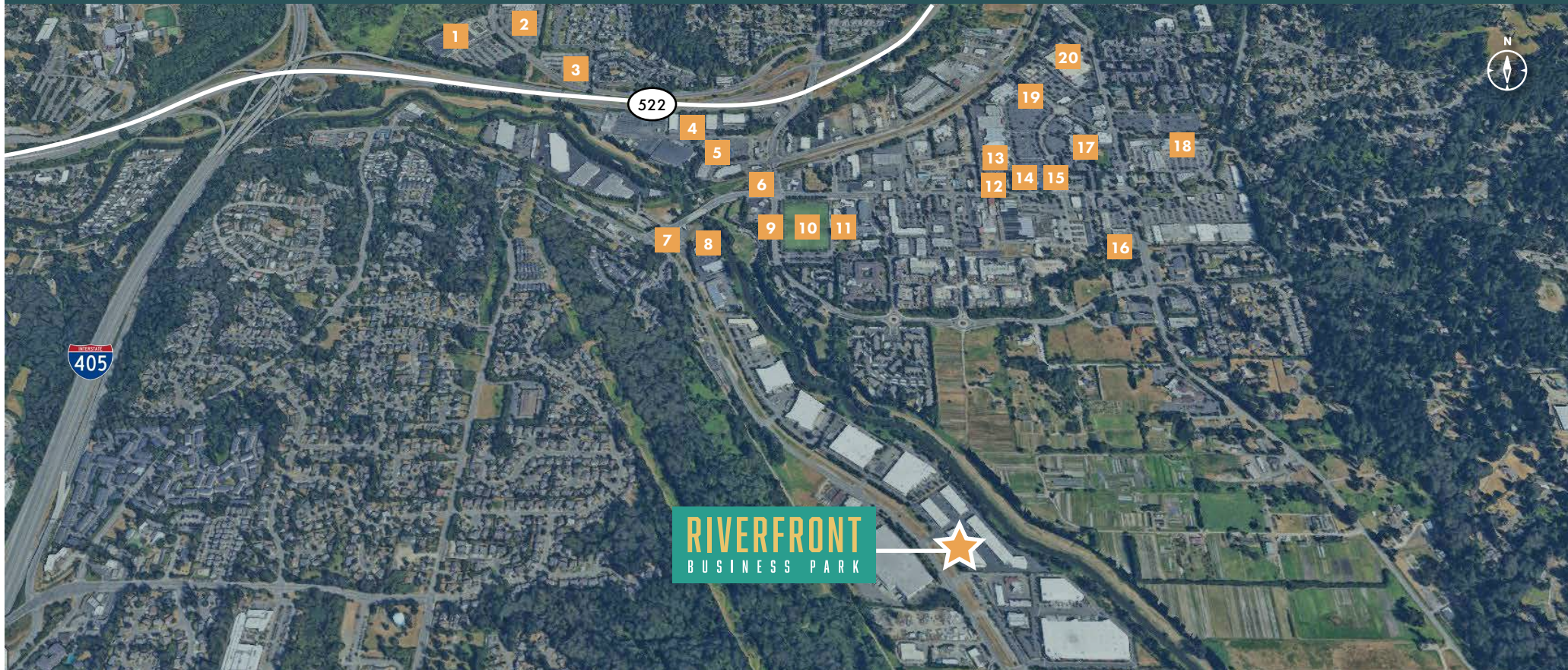
RAWLEY HOLMBERG
425.274.4284
holmberg@broderickgroup.com

SAMSON TORO
425.274.4289
toro@broderickgroup.com

RIVERFRONT BUSINESS PARK

CLASS A LIGHT INDUSTRIAL BUILDINGS

16110-16140 WOODINVILLE REDMOND RD NE, WOODINVILLE, WA



- 1 The Home Depot
- 2 Starbucks
- 3 24 Hour Fitness
- 4 Crucible Brewing
- 5 US Post Office

- 6 McLendon's Hardware
- 7 Cut Shop Restaurant
- 8 Mercury Coffee Shop
- 9 Jack in the Box
- 10 Woodinville Play Fields

- 11 The Schoolhouse District
- 12 FedEx Shipping Center
- 13 Haggen Food & Pharmacy
- 14 Panera Bread
- 15 Chipotle

- 16 McDonalds
- 17 AMC Theatres Woodinville
- 18 Woodinville Park & Ride
- 19 Red Robin Gourmet Burgers
- 20 Target



CONNOR GILCHRIST
425.274.4286
gilchrist@broderickgroup.com

RAWLEY HOLMBERG
425.274.4284
holmberg@broderickgroup.com

SAMSON TORO
425.274.4289
toro@broderickgroup.com