

FOR LEASE

Willows Business Center



Northwest Building LLC

14620 - 14950 NE 95TH ST, REDMOND, WA 98052



CONNOR GILCHRIST
425.274.4286
gilchrist@broderickgroup.com

JEFF LIVINGSTON
425.274.4288
livingston@broderickgroup.com

RAWLEY HOLMBERG
425.274.4284
holmberg@broderickgroup.com

The information contained herein has been given to us by the owner or sources which we deem reliable. We have no reason to doubt its accuracy, but we do not guarantee it. Prospective tenants should carefully verify all information contained herein.

FOR LEASE

Willows Business Center



14620 - 14950 NE 95TH ST, REDMOND, WA 98052



Business Park Highlights



Experienced local
ownership



On-site property
management



Nearby restaurants
& amenities



Concrete-tilt
construction



No redevelopment
clause in Lease
Agreements



Abundant
parking



CONNOR GILCHRIST
425.274.4286
gilchrist@broderickgroup.com

JEFF LIVINGSTON
425.274.4288
livingston@broderickgroup.com

RAWLEY HOLMBERG
425.274.4284
holmberg@broderickgroup.com

The information contained herein has been given to us by the owner or sources which we deem reliable. We have no reason to doubt its accuracy, but we do not guarantee it. Prospective tenants should carefully verify all information contained herein.

FOR LEASE

Willows Business Center



14620 - 14950 NE 95TH ST, REDMOND, WA 98052

Site Plan

AVAILABLE SPACE

Building	5	6	7	11	12
Suite	<u>14842</u>	<u>14822</u>	<u>14752</u>	<u>14678</u>	<u>14622</u>
Size	3,820 SF (1,856 SF Office)	1,884 SF (535 SF Office)	3,165 SF (1,053 SF Office)	1,881 (495 Office)	1,289 (516 Office)
Availability	Now	6/1/2026	Now	Now	8/1/2026



CONNOR GILCHRIST
425.274.4286
gilchrist@broderickgroup.com

JEFF LIVINGSTON
425.274.4288
livingston@broderickgroup.com

RAWLEY HOLMBERG
425.274.4284
holmberg@broderickgroup.com

The information contained herein has been given to us by the owner or sources which we deem reliable. We have no reason to doubt its accuracy, but we do not guarantee it. Prospective tenants should carefully verify all information contained herein.

FOR LEASE

Willows Business Center



14620 - 14950 NE 95TH ST, REDMOND, WA 98052



BUILDING 5 - SUITE 14842

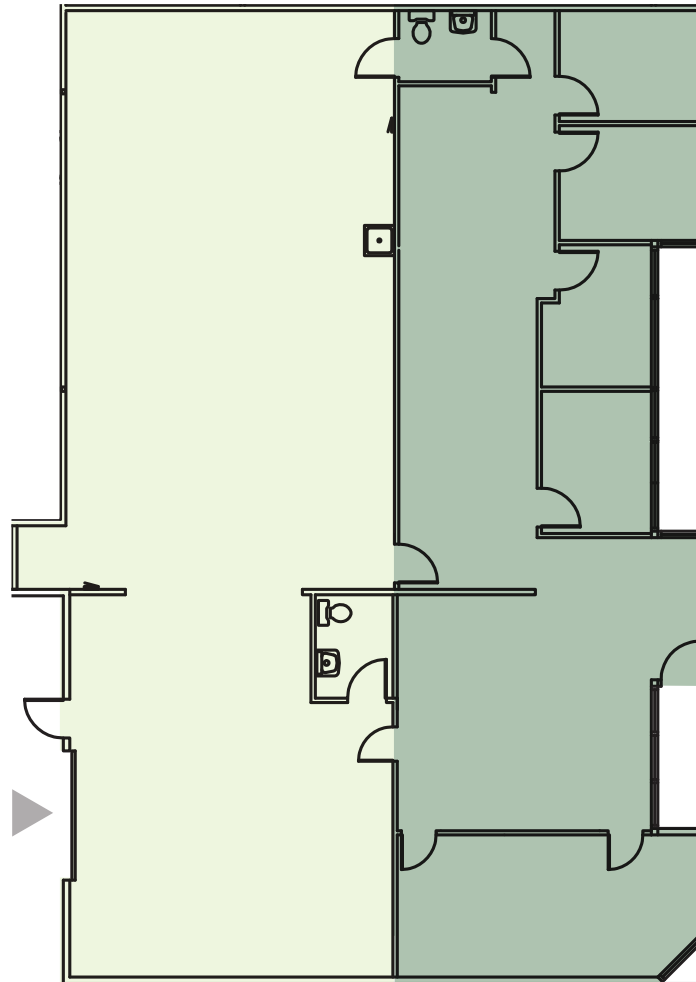
Available Now

1,964 SF Warehouse

1,856 SF Office

3,820 SF Total

-  OFFICE
-  WAREHOUSE
-  GRADE-LEVEL LOADING



CONNOR GILCHRIST
425.274.4286
gilchrist@broderickgroup.com

JEFF LIVINGSTON
425.274.4288
livingston@broderickgroup.com

RAWLEY HOLMBERG
425.274.4284
holmberg@broderickgroup.com

The information contained herein has been given to us by the owner or sources which we deem reliable. We have no reason to doubt its accuracy, but we do not guarantee it. Prospective tenants should carefully verify all information contained herein.

FOR LEASE

Willows Business Center



14620 - 14950 NE 95TH ST, REDMOND, WA 98052

BUILDING 6 - SUITE 14822

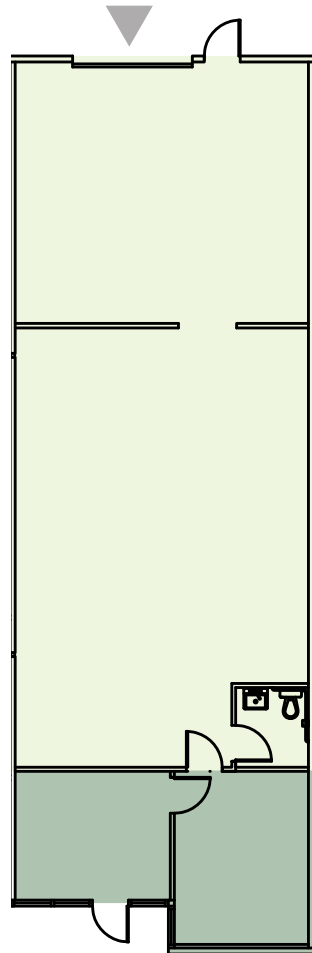
Available 6/1/2026

1,349 SF Warehouse

535 SF Office

1,884 SF Total

-  OFFICE
-  WAREHOUSE
-  GRADE-LEVEL LOADING



CONNOR GILCHRIST
425.274.4286
gilchrist@broderickgroup.com

JEFF LIVINGSTON
425.274.4288
livingston@broderickgroup.com

RAWLEY HOLMBERG
425.274.4284
holmberg@broderickgroup.com

The information contained herein has been given to us by the owner or sources which we deem reliable. We have no reason to doubt its accuracy, but we do not guarantee it. Prospective tenants should carefully verify all information contained herein.

FOR LEASE

Willows Business Center



14620 - 14950 NE 95TH ST, REDMOND, WA 98052

BUILDING 7 - SUITE 14752

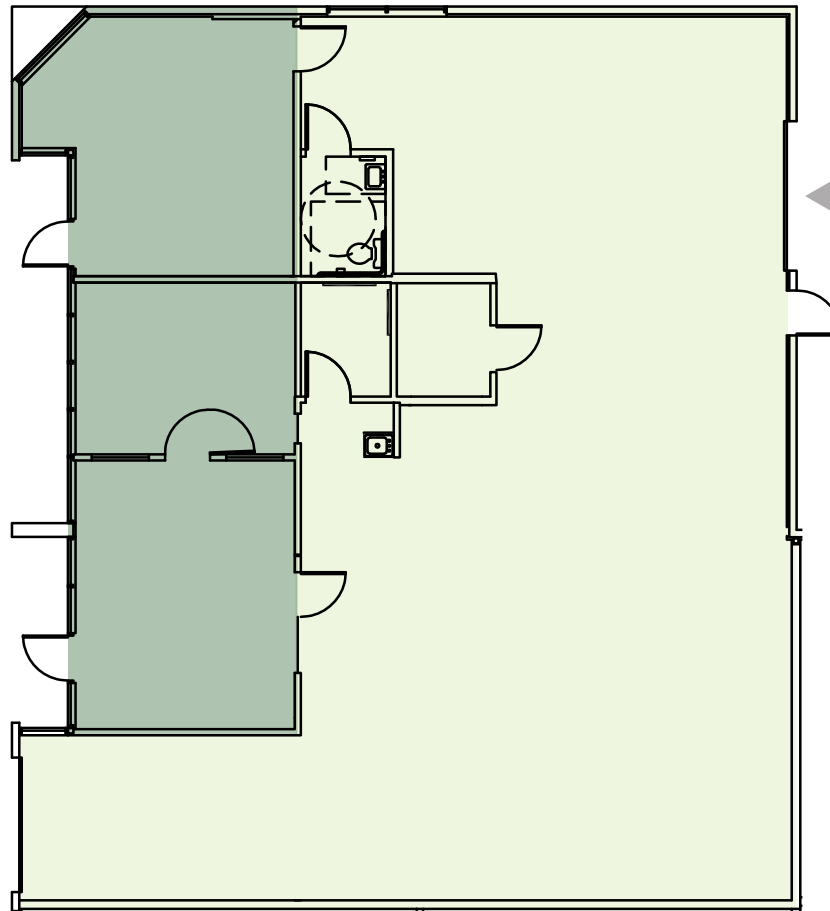


Available Now

2,112 SF Warehouse

1,053 SF Office

3,165 SF Total



- OFFICE
- WAREHOUSE
- GRADE-LEVEL LOADING

[CLICK TO TAKE A VIRTUAL TOUR](#)



CONNOR GILCHRIST
425.274.4286
gilchrist@broderickgroup.com

JEFF LIVINGSTON
425.274.4288
livingston@broderickgroup.com

RAWLEY HOLMBERG
425.274.4284
holmberg@broderickgroup.com

The information contained herein has been given to us by the owner or sources which we deem reliable. We have no reason to doubt its accuracy, but we do not guarantee it. Prospective tenants should carefully verify all information contained herein.

FOR LEASE

Willows Business Center



14620 - 14950 NE 95TH ST, REDMOND, WA 98052

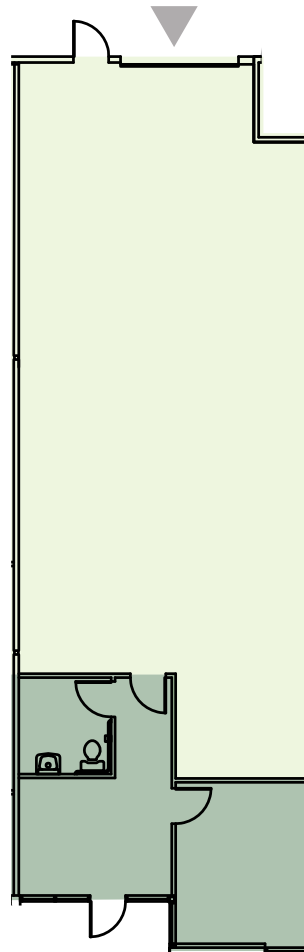
BUILDING 11 - SUITE 14678

Available Now

1,386 SF Warehouse

495 SF Office

1,881 SF Total



-  OFFICE
-  WAREHOUSE
-  GRADE-LEVEL LOADING



CONNOR GILCHRIST
425.274.4286
gilchrist@broderickgroup.com

JEFF LIVINGSTON
425.274.4288
livingston@broderickgroup.com

RAWLEY HOLMBERG
425.274.4284
holmberg@broderickgroup.com

The information contained herein has been given to us by the owner or sources which we deem reliable. We have no reason to doubt its accuracy, but we do not guarantee it. Prospective tenants should carefully verify all information contained herein.

FOR LEASE

Willows Business Center



14620 - 14950 NE 95TH ST, REDMOND, WA 98052

BUILDING 12 - SUITE 14622

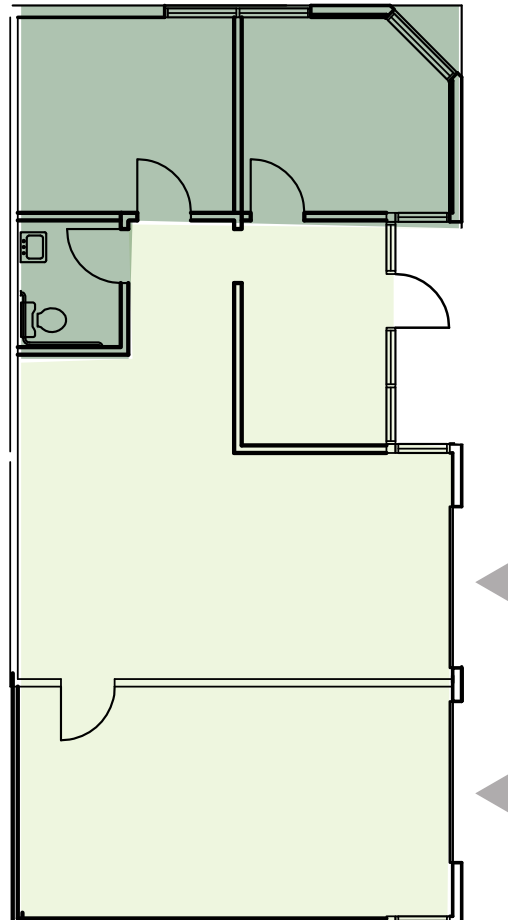
Available 8/1/2026

773 SF Warehouse

516 SF Office

1,289 SF Total

-  OFFICE
-  WAREHOUSE
-  GRADE-LEVEL LOADING



CONNOR GILCHRIST
425.274.4286
gilchrist@broderickgroup.com

JEFF LIVINGSTON
425.274.4288
livingston@broderickgroup.com

RAWLEY HOLMBERG
425.274.4284
holmberg@broderickgroup.com

The information contained herein has been given to us by the owner or sources which we deem reliable. We have no reason to doubt its accuracy, but we do not guarantee it. Prospective tenants should carefully verify all information contained herein.

FOR LEASE

Willows Business Center



14620 - 14950 NE 95TH ST, REDMOND, WA 98052



NEARBY AMENITIES

1. Firecreek Grill
2. Willows Run Golf Complex
3. La Cherie Bakery
4. Pasta ya Gotcha
5. Willows Deli
6. Big Block Brewing
7. Eastside Gym
8. Black Raven Brewing
9. Zuacer Pizza
10. Subway

5 MINUTES TO REDMOND TOWN CENTER

7 MINUTES TO TOTEM LAKE MALL



CONNOR GILCHRIST
425.274.4286
gilchrist@broderickgroup.com

JEFF LIVINGSTON
425.274.4288
livingston@broderickgroup.com

RAWLEY HOLMBERG
425.274.4284
holmberg@broderickgroup.com

The information contained herein has been given to us by the owner or sources which we deem reliable. We have no reason to doubt its accuracy, but we do not guarantee it. Prospective tenants should carefully verify all information contained herein.