



ARROWHEAD INDUSTRIAL BUILDING

Industrial space available for lease, strategically located just off I-5/128th St SW interchange in Everett

720 132ND ST SW, EVERETT, WA 98204

\$1.40
PSF, BLENDED

\$0.42
PSF, NNN

ARROWHEAD INDUSTRIAL BUILDING



Located in a multi-tenant industrial building in South Everett

SPACE AVAILABILITIES

SUITE 201 & 202 COMBINED (AVAILABLE 11/1/26)	4,048 SF
SUITE 204	2,874 SF (± 600 SF Office)
SUITE 206	1,600 SF
SUITE 207	5,544 SF (±1,800 SF Office)
SUITE 206 & 207 COMBINED	7,078 SF (±1,800 SF Office)
LOADING	Dock and grade-level
PARKING RATIO	1.98/1,000 PSF

\$1.40
PSF, BLENDED

\$0.42
PSF, NNN

SUITE 201 & 202

4,048 SF

AVAILABLE

\$1.40

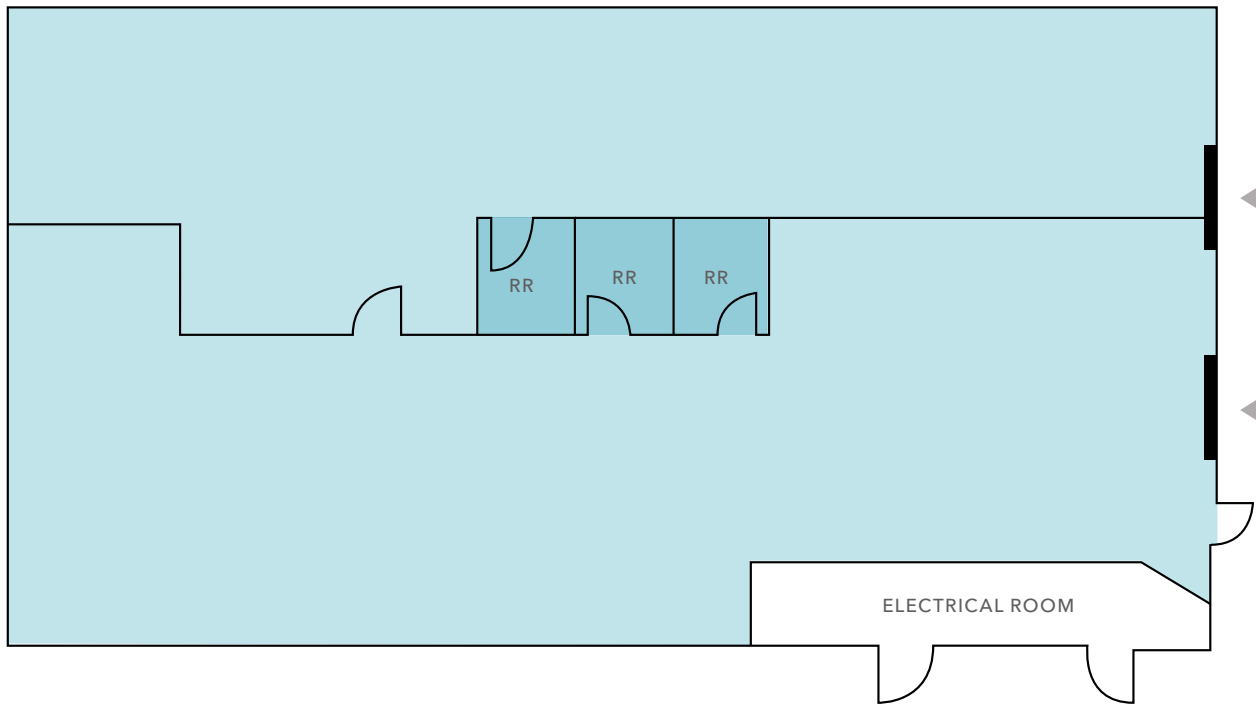
PSF, BLENDED

\$0.42

PSF, NNN

11/1/26

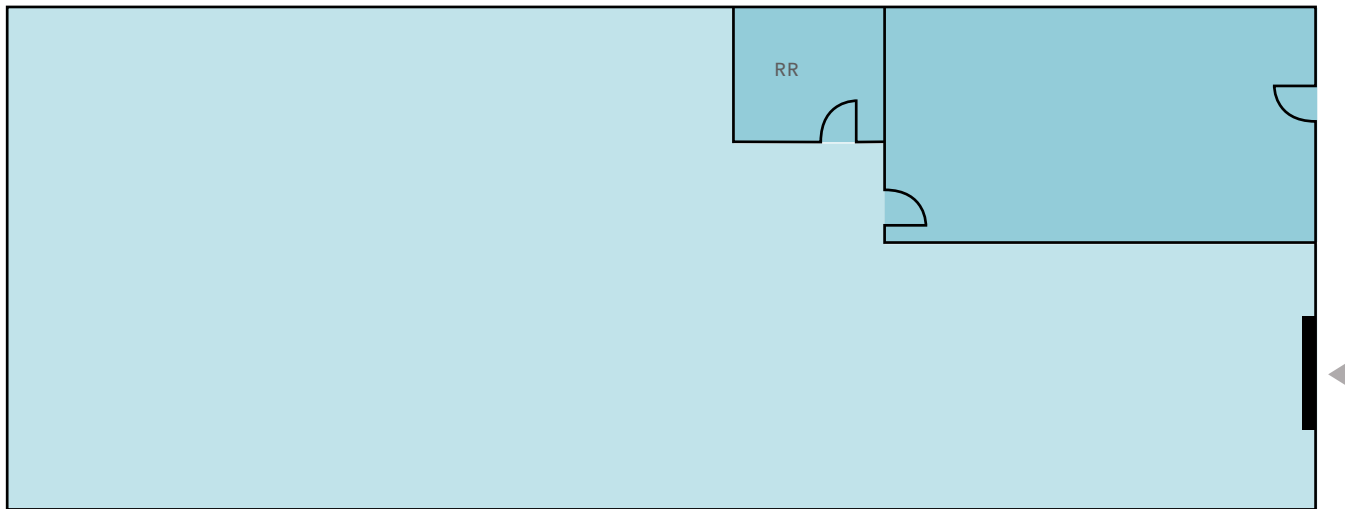
AVAILABLE



- Office
- Warehouse
- Grade-level loading
- Dock-high loading



SUITE 204



2,874 SF

AVAILABLE

±600 SF

OFFICE AVAILABLE

\$1.40





PSF, BLENDED

\$0.42

PSF, NNN

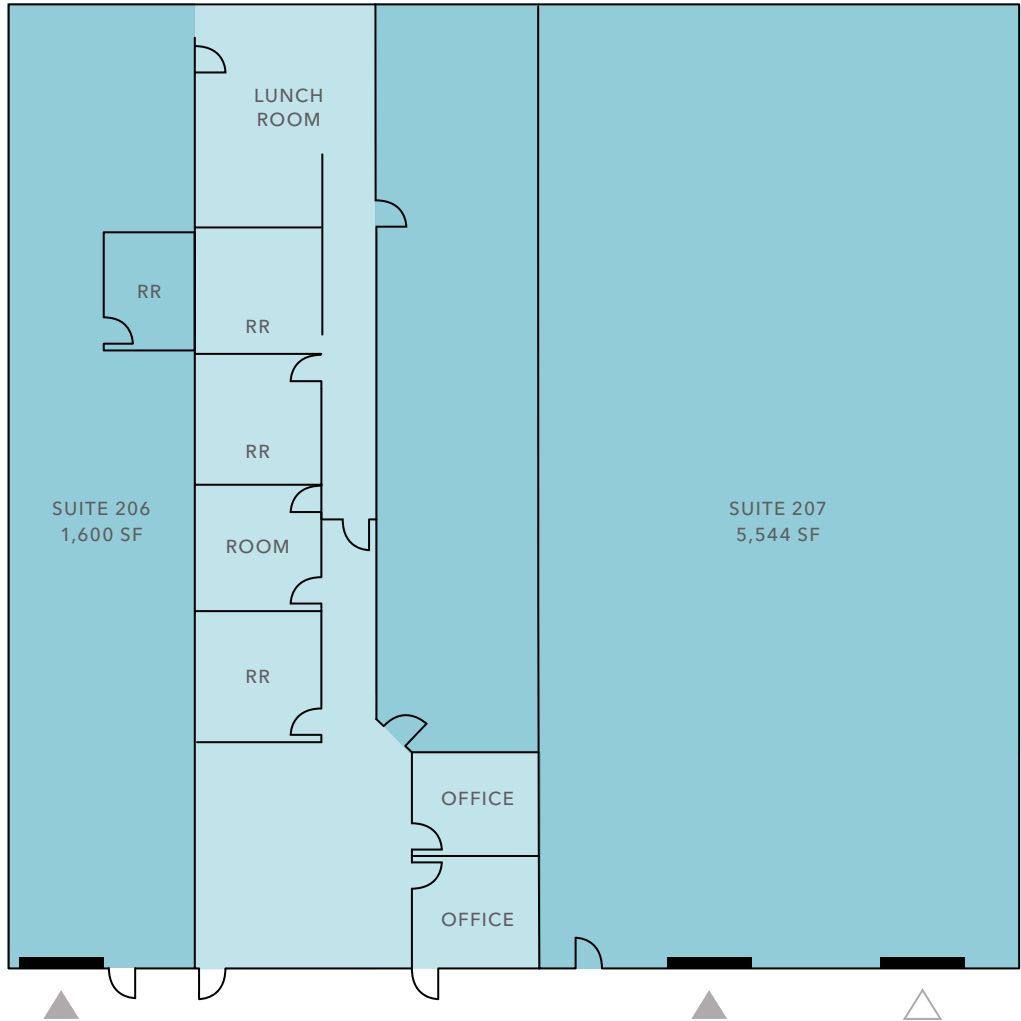
NOW

AVAILABLE

-  Office
-  Warehouse
-  Grade-level loading
-  Dock-high loading



SUITE 206 & 207



7,078 SF

AVAILABLE

±1,800 SF

OFFICE AVAILABLE

\$1.40

PSF, BLENDED

\$0.42

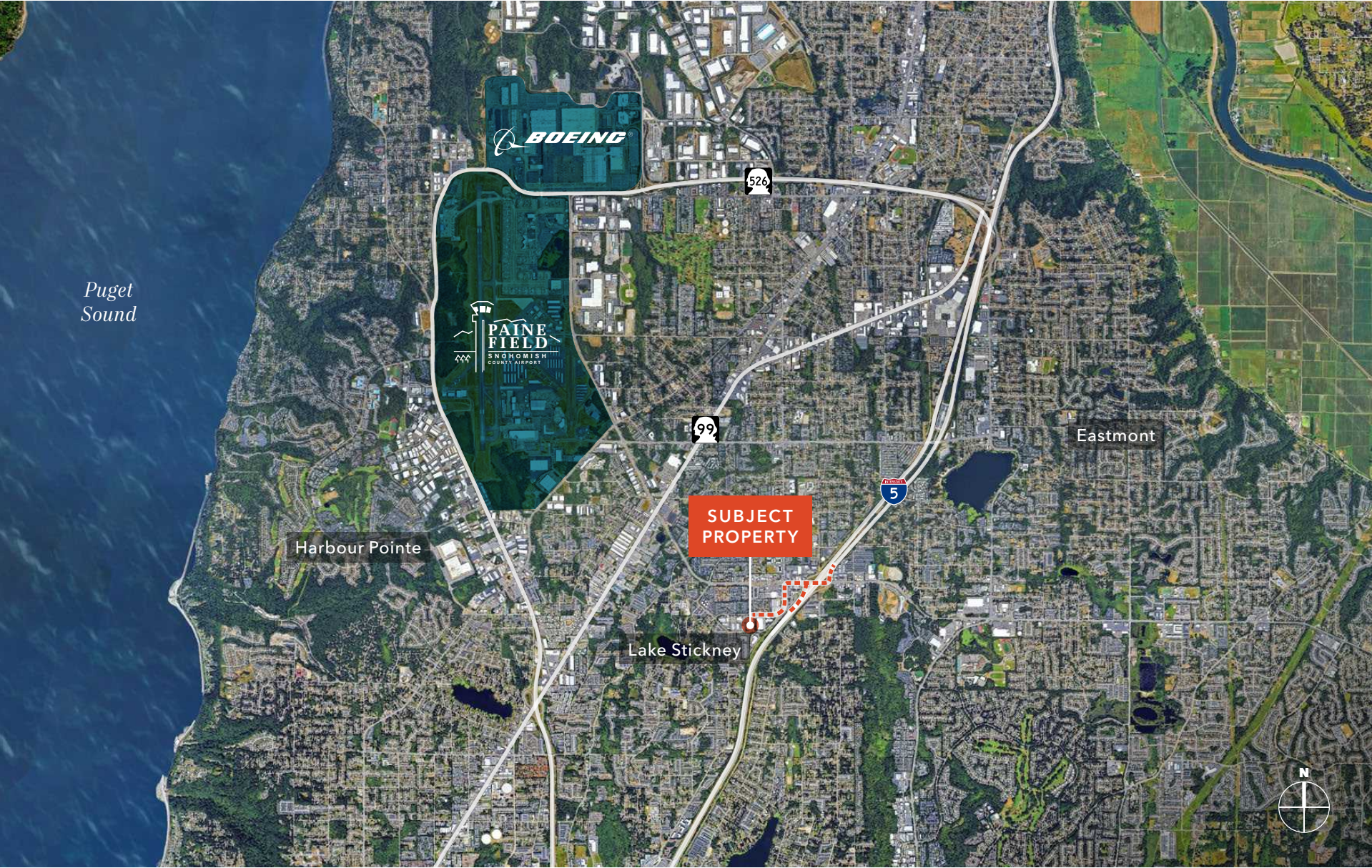
PSF, NNN

NOW

AVAILABLE

- Warehouse
- Office
- Grade-level loading
- Dock-high loading

ARROWHEAD INDUSTRIAL BUILDING





ARROWHEAD INDUSTRIAL BUILDING

*For more information on
this property, please contact*

MATTHEW HAGEN, SIOR
425.283.5782
matt.hagen@kidder.com

MATTHEW P. HENN
206.890.7800
matt.henn@kidder.com

MATT MCLENNAN, SIOR, CCIM
253.722.1458
matt.mclennan@kidder.com

This information supplied herein is from sources we deem reliable. It is provided without any representation, warranty, or guarantee, expressed or implied as to its accuracy. Prospective Buyer or Tenant should conduct an independent investigation and verification of all matters deemed to be material, including, but not limited to, statements of income and expenses. Consult your attorney, accountant, or other professional advisor. All Kidder Mathews designs are the sole property of Kidder Mathews. Branded materials and layouts are not authorized for use by any other firm or person.

