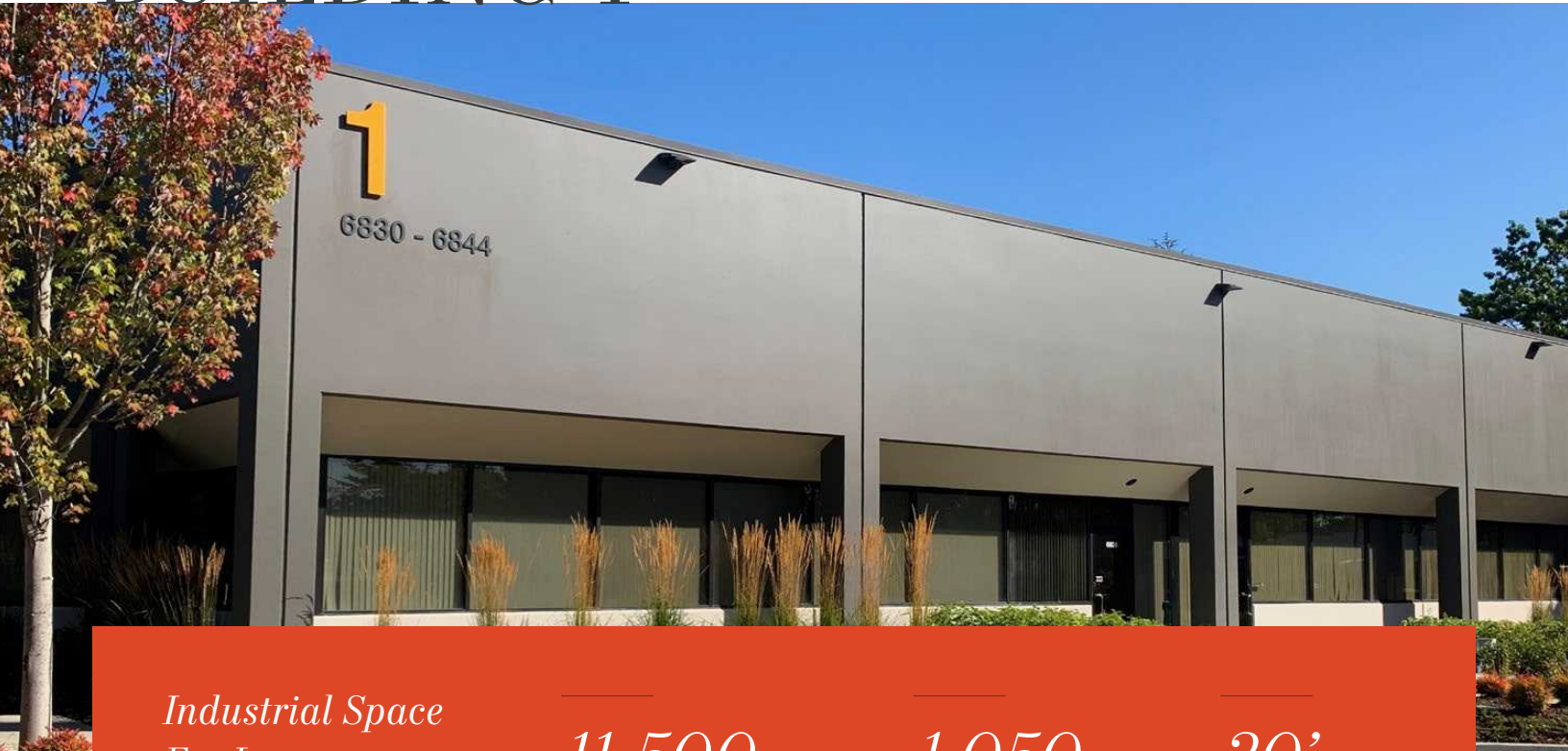


PACIFIC BUSINESS PARK BUILDING 4



*Industrial Space
For Lease*

11,500
SF TOTAL

1,050
SF OFFICE

20'
CLEAR HEIGHT

±11,500 rentable SF total of which ±1,050 SF is office

\$1.00/SF shell, \$1.35/SF office add-on, + NNN

8 DH / 2 GL doors, 20' clear height

Available now

Great parking

Tremendous access to I-5 & SR-167 via S 212th St

Comcast cable available

Onsite roaming security guard with patrol car, from
9 PM-5 AM seven days a week

DOUG KLEIN, SIOR
206.248.7348
doug.klein@kidder.com

KRAIG HEETER, SIOR
206.248.7313
kraig.heeter@kidder.com

COLT SHERRELL
206.498.4566
colt.sherrell@kidder.com

KIDDER.COM

This information supplied herein is from sources we deem reliable. It is provided without any representation, warranty, or guarantee, expressed or implied as to its accuracy. Prospective Buyer or Tenant should conduct an independent investigation and verification of all matters deemed to be material, including, but not limited to, statements of income and expenses. Consult your attorney, accountant, or other professional advisor.



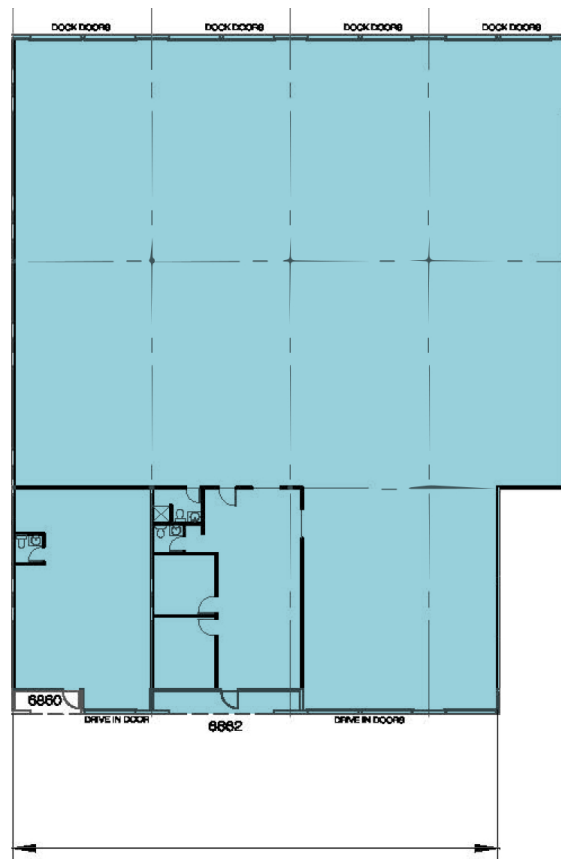
BUILDING 4

\$1.15

PSF SHELL

\$1.35

PSF OFFICE ADD-ON



SUITE 6862 FLOORPLAN

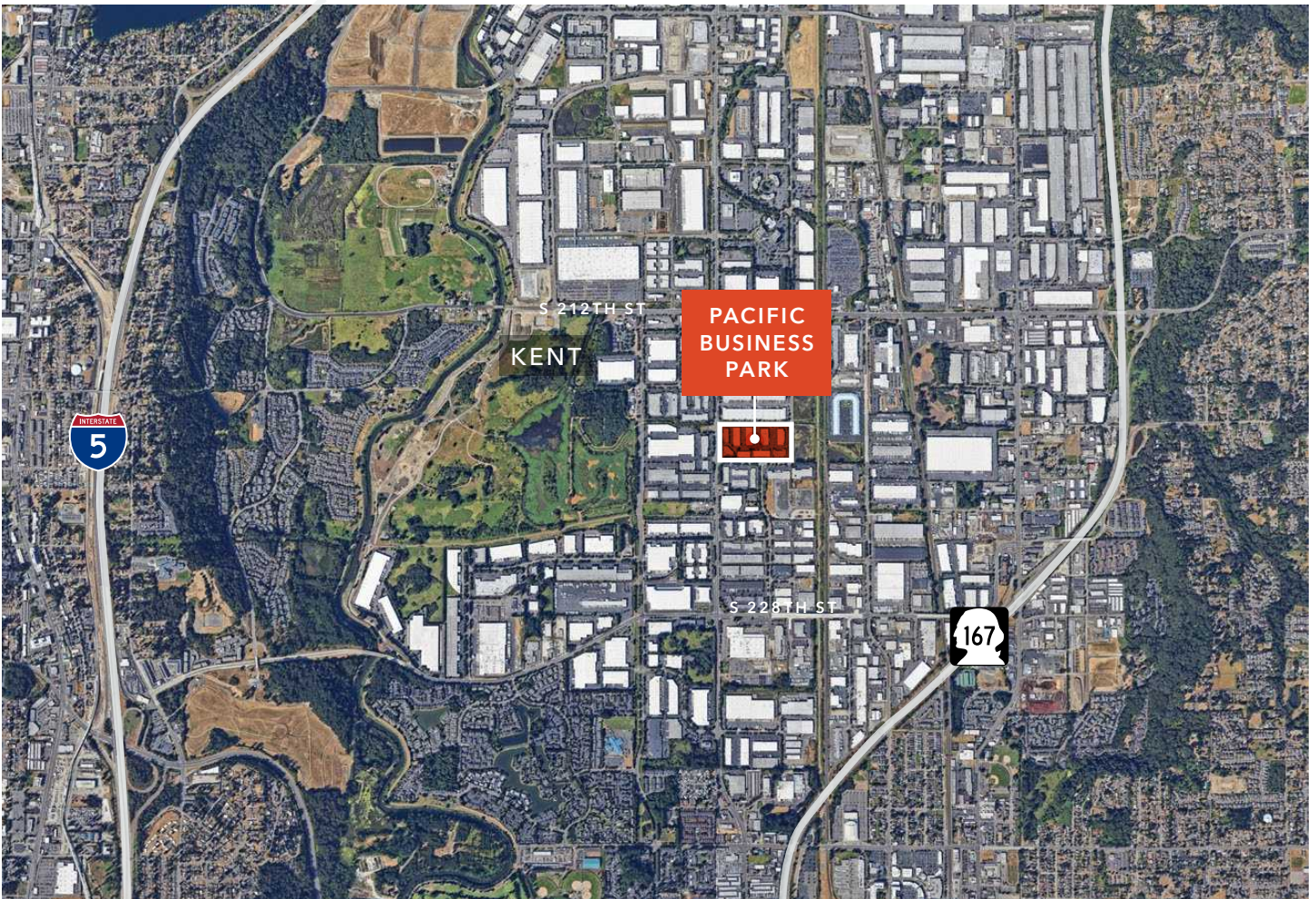
FOR LEASE



L1
ZONING

5 MIN
TO SR-167

14 MIN
TO SEATAC AIRPORT



KIDDER.COM

This information supplied herein is from sources we deem reliable. It is provided without any representation, warranty, or guarantee, expressed or implied as to its accuracy. Prospective Buyer or Tenant should conduct an independent investigation and verification of all matters deemed to be material, including, but not limited to, statements of income and expenses. Consult your attorney, accountant, or other professional advisor.

