

# PACIFIC BUSINESS PARK BUILDING 9



*Industrial Space  
For Lease*

**4,700**  
SF TOTAL

**3,222**  
SF OFFICE

**9/1/26**  
AVAILABLE

4,700 SF available, 3,222 SF office, may demo some office to suit

\$1.10/SF shell, \$1.35/SF office add-on + NNN

One dock-high door, one grade-level door

Great parking

20' clear height

Tremendous access to I-5 & SR-167 via S 212th St

Comcast cable available

Onsite roaming security guard with patrol car, from 9 PM-5 AM seven days a week

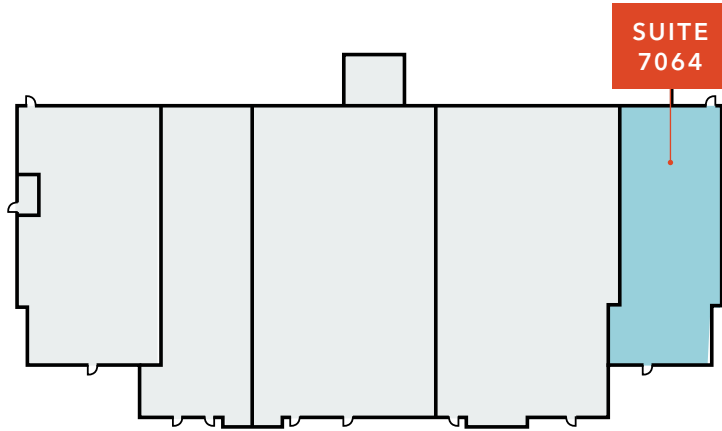
**DOUG KLEIN, SIOR**  
206.248.7348  
doug.klein@kidder.com

**KRAIG HEETER, SIOR**  
206.248.7313  
kraig.heeter@kidder.com

**COLT SHERRELL**  
206.498.4566  
colt.sherrell@kidder.com

**KIDDER.COM**

This information supplied herein is from sources we deem reliable. It is provided without any representation, warranty, or guarantee, expressed or implied as to its accuracy. Prospective Buyer or Tenant should conduct an independent investigation and verification of all matters deemed to be material, including, but not limited to, statements of income and expenses. Consult your attorney, accountant, or other professional advisor.



BUILDING 9

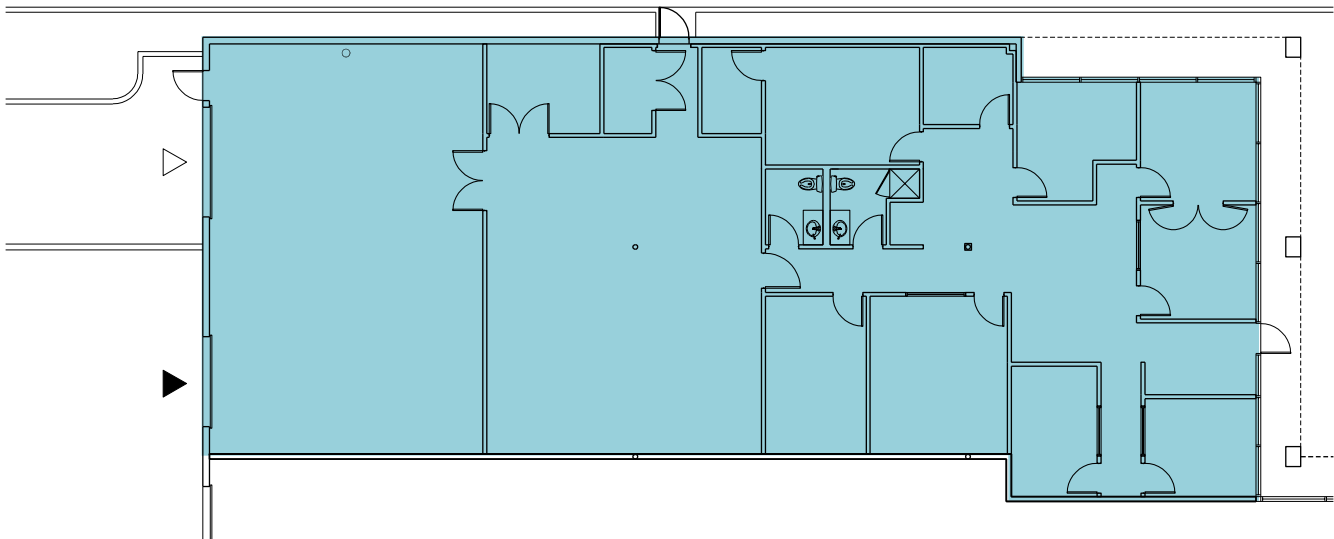


**\$1.10**

PSF SHELL, NNN

**\$1.35**

PSF OFFICE ADD-ON



SUITE 7064 FLOORPLAN



[KIDDER.COM](http://KIDDER.COM)

This information supplied herein is from sources we deem reliable. It is provided without any representation, warranty, or guarantee, expressed or implied as to its accuracy. Prospective Buyer or Tenant should conduct an independent investigation and verification of all matters deemed to be material, including, but not limited to, statements of income and expenses. Consult your attorney, accountant, or other professional advisor.

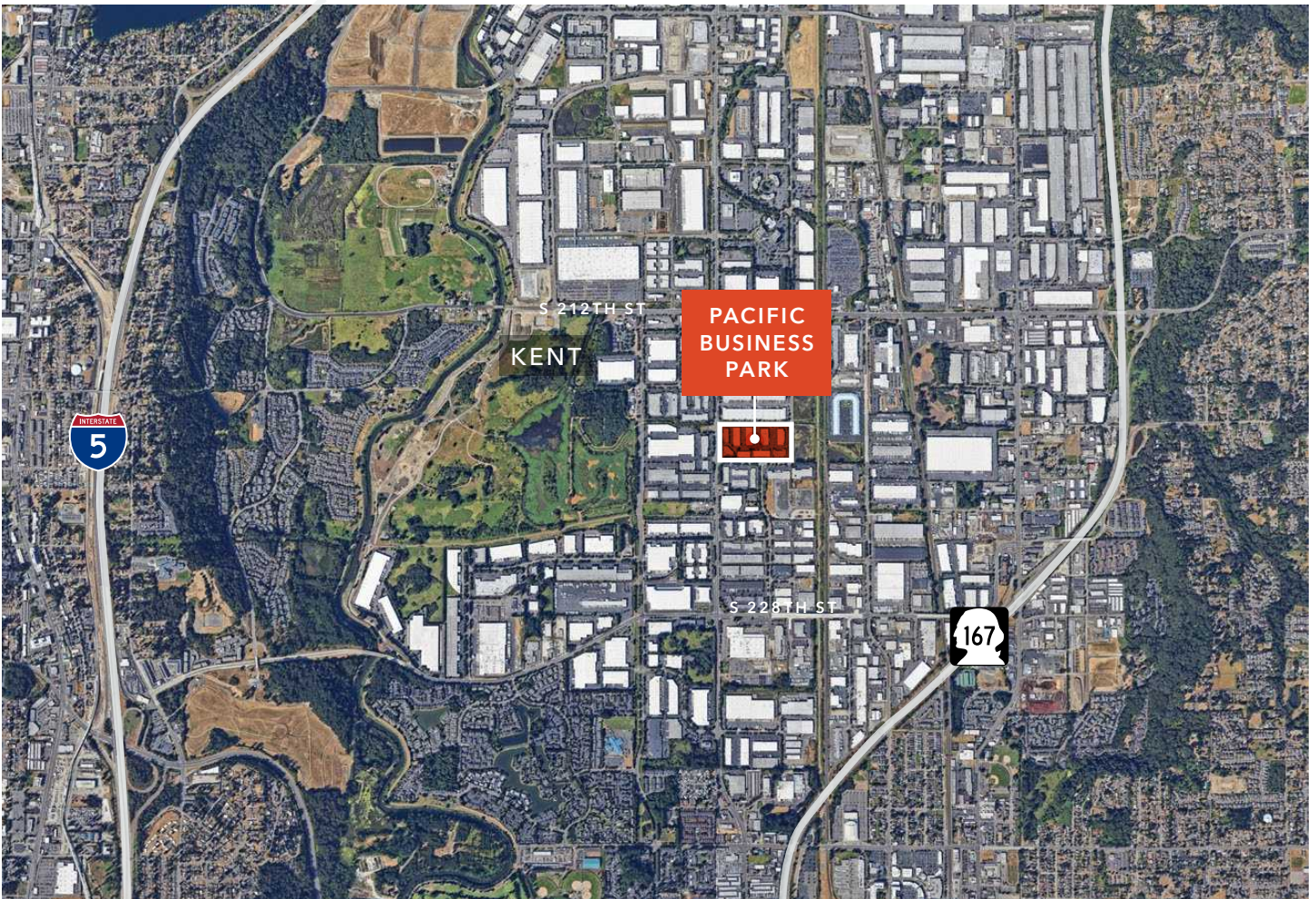
FOR LEASE



*L1*  
ZONING

*5 MIN*  
TO SR-167

*14 MIN*  
TO SEATAC AIRPORT



[KIDDER.COM](http://KIDDER.COM)

This information supplied herein is from sources we deem reliable. It is provided without any representation, warranty, or guarantee, expressed or implied as to its accuracy. Prospective Buyer or Tenant should conduct an independent investigation and verification of all matters deemed to be material, including, but not limited to, statements of income and expenses. Consult your attorney, accountant, or other professional advisor.

