

FOR LEASE

27433 Maple Valley Black Diamond Rd SE
Maple Valley, WA 98038



AVAILABLE



MAPLE VALLEY COMMONS
Second Generation Restaurant Available

First Western Properties—Tacoma Inc. | 253.472.0404
6402 Tacoma Mall Blvd, Tacoma, WA 98409 | fwp-inc.com

MAPLE VALLEY COMMONS is a well-positioned retail center located in the heart of the Four Corners retail corridor, Maple Valley's primary commercial hub. Situated at the high-traffic intersection of SR 169 and SR 516, the center offers excellent visibility, strong co-tenancy with national and regional tenants, and easy access for the growing surrounding population. With a modern layout and ample parking, Maple Valley Commons is an ideal location for retail businesses looking to serve one of King County's fastest-growing suburban markets.

FOR LEASE:

2,492 SF \$38.00 PSF PLUS NNN
SECOND GENERATION RESTAURANT SPACE



Population



Average HH Income

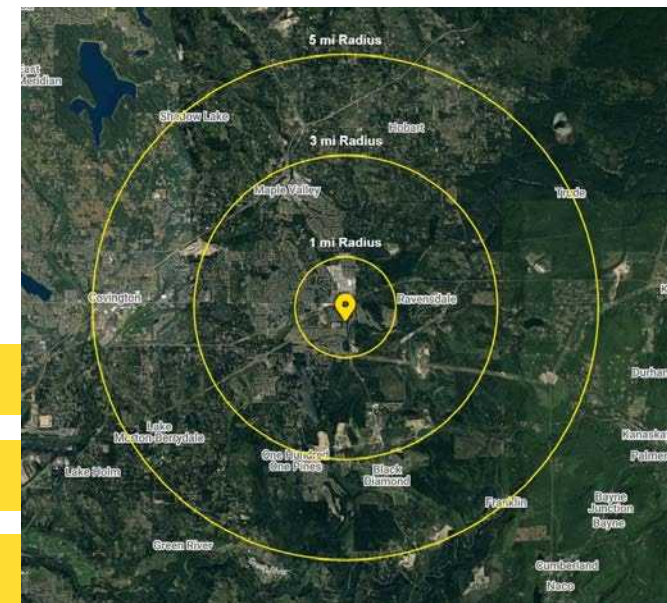


Daytime Population

Regis - 2025

	Population	Average HH Income	Daytime Population
Mile 1	11,482	\$197,364	3,680
Mile 3	40,649	\$184,339	15,259
Mile 5	70,463	\$180,357	29,743

NEARBY RETAIL



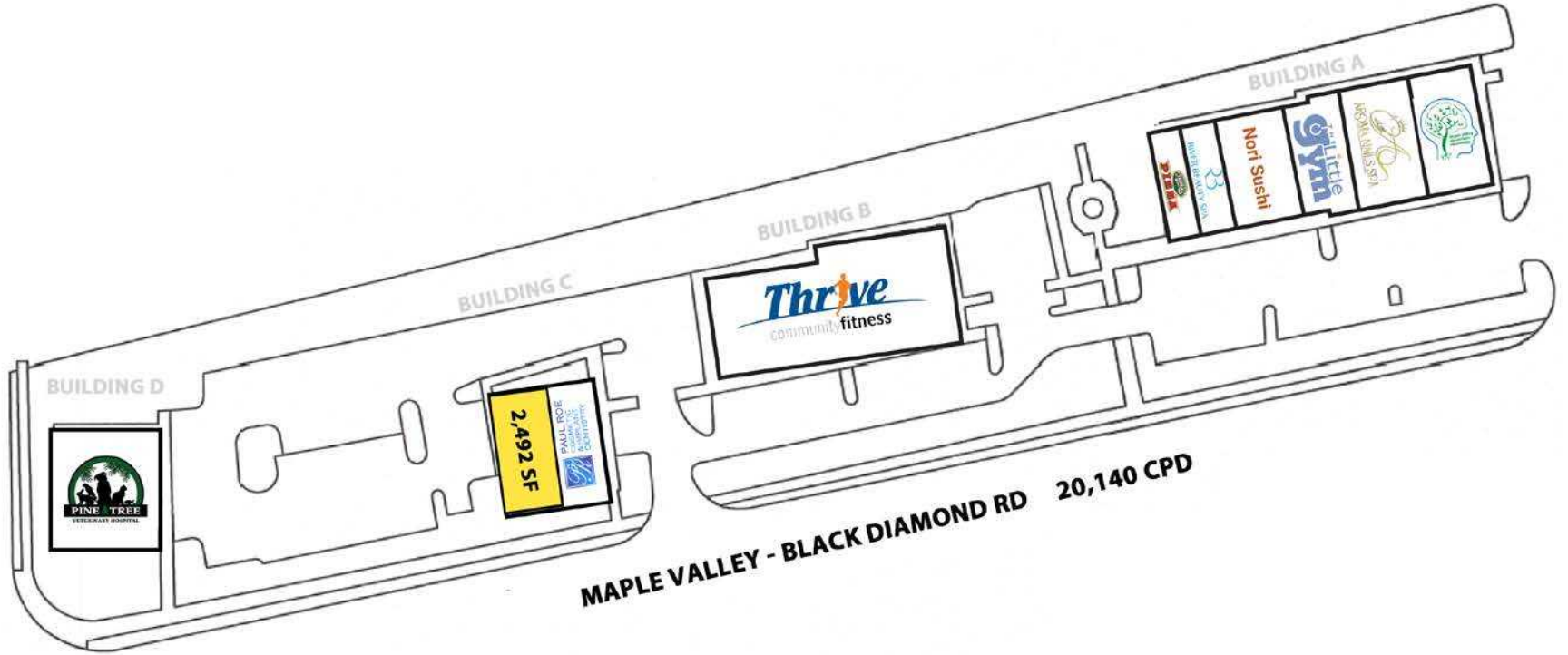
PHOTOS



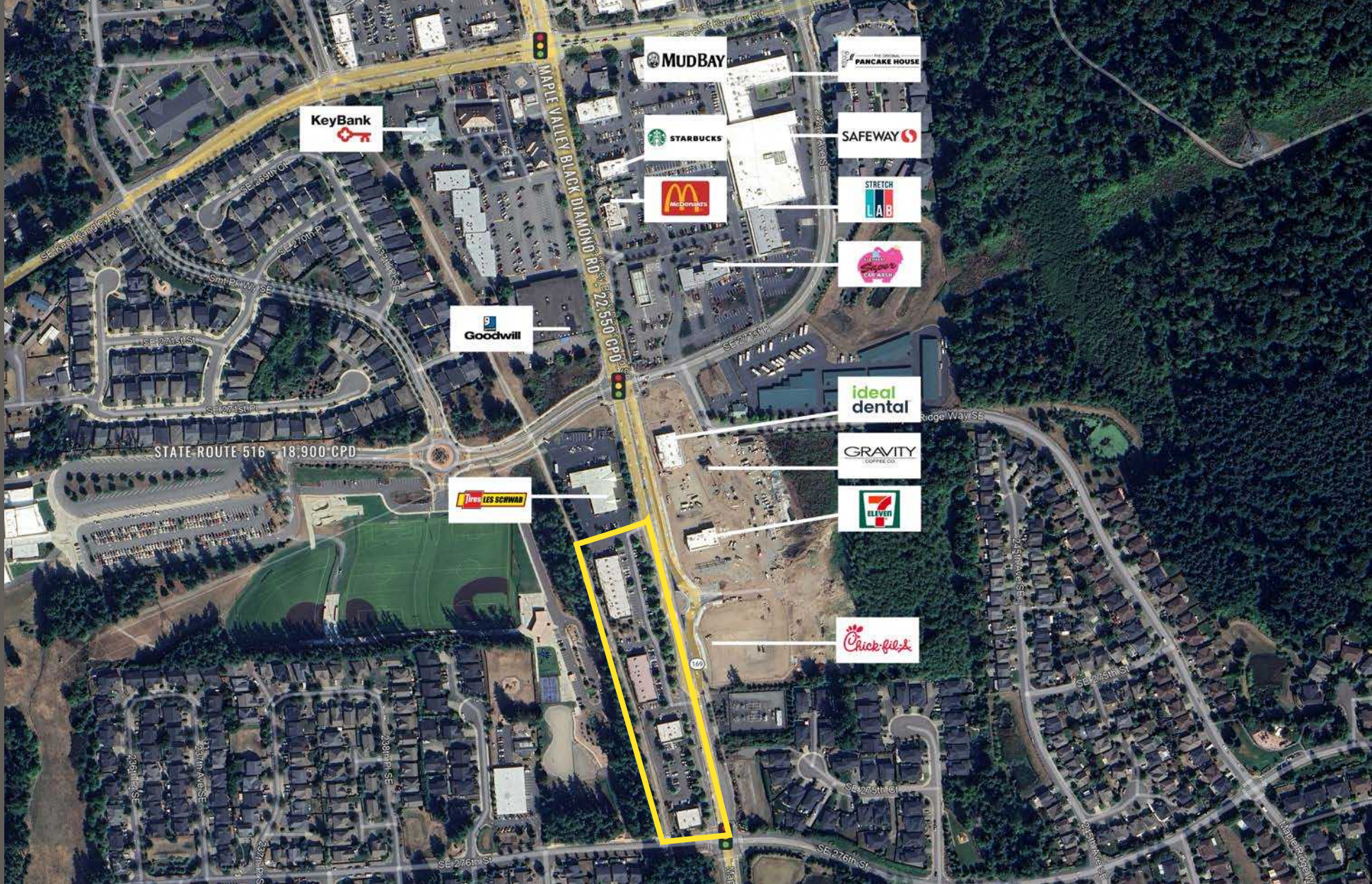
PHOTOS



SITE PLAN



LOCATION DETAILS



Located in the Maple Valley
Four Corners Retail Core



Close to Covington
and Black Diamond

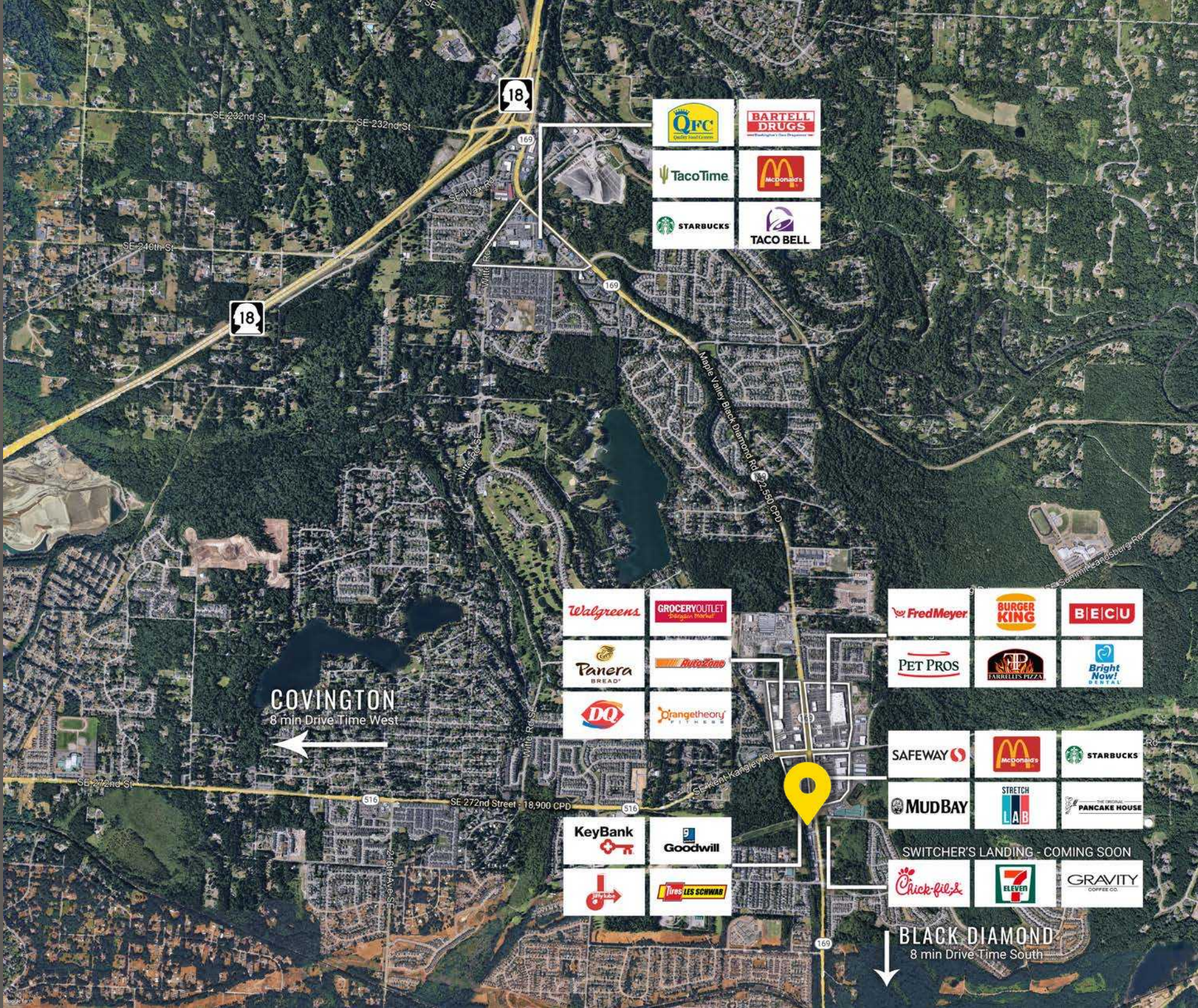


18,900 CPD
State Route 516



22,550 CPD
State Route 169

LOCATION AERIAL



--	--	--

COVINGTON
8 min Drive Time West


BLACK DIAMOND
8 min Drive Time South



TACOMA | KIRKLAND | PORTLAND | SEATTLE

RELATIONSHIP FOCUSED.
RESULTS DRIVEN.

JAMESON SULLIVAN

 253.471.5508

 jsullivan@firstwesternproperties.com



First Western Properties—Tacoma Inc. | 253.472.0404
6402 Tacoma Mall Blvd, Tacoma, WA 98409 | fwp-inc.com

© First Western Properties, Inc. DISCLAIMER: The above information has been secured from sources believed to be reliable, however, no representations are made to its accuracy. Prospective tenants or buyers should consult their professional advisors and conduct their own independent investigation. Properties are subject to change in price and/or availability without notice.

