

# INDUSTRIAL FOR LEASE

10834 E MARGINAL WAY S, TUKWILA, WA



## *7,750 SF Building Available For Lease in Tukwila*

7,750 SF total

950 SF office

400 amps of 480v power

1 grade-level door

16' clear height

\$0.85 shell / \$1.30 office add-on, + NNN

Available now

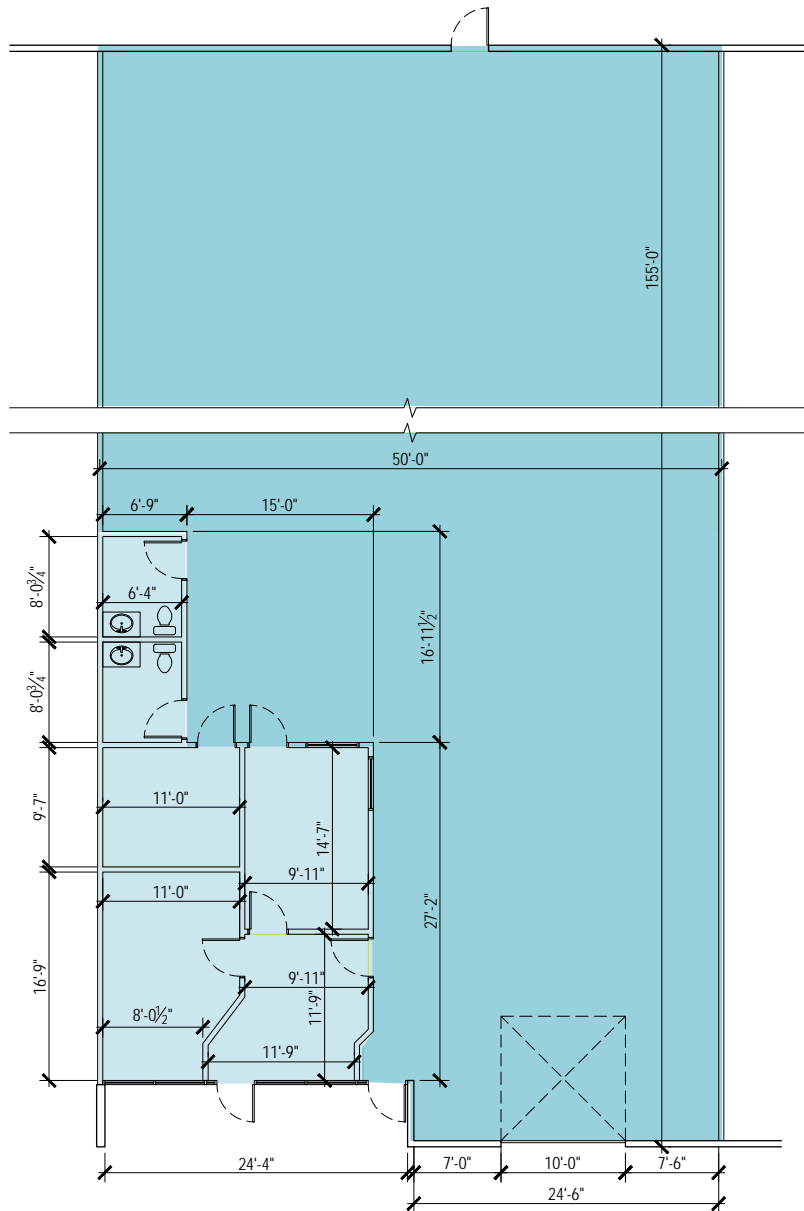
**DOUG KLEIN, SIOR**  
206.248.7348  
doug.klein@kidder.com

**KIDDER.COM**

This information supplied herein is from sources we deem reliable. It is provided without any representation, warranty, or guarantee, expressed or implied as to its accuracy. Prospective Buyer or Tenant should conduct an independent investigation and verification of all matters deemed to be material, including, but not limited to, statements of income and expenses. Consult your attorney, accountant, or other professional advisor.

**km** Kidder  
Mathews

# FLOOR PLAN



**7,750 SF**

TOTAL

**950 SF**

OFFICE

**NOW**

AVAILABLE

Warehouse Office



DOUG KLEIN, SIOR 206.248.7348 | doug.klein@kidder.com

**KIDDER.COM**

This information supplied herein is from sources we deem reliable. It is provided without any representation, warranty, or guarantee, expressed or implied as to its accuracy. Prospective Buyer or Tenant should conduct an independent investigation and verification of all matters deemed to be material, including, but not limited to, statements of income and expenses. Consult your attorney, accountant, or other professional advisor.



