

FOR LEASE

919 HOUSER WAY N

RENTON, WA 98057



*Warehouse with small secure yard
available for lease in Renton*

12,500 SF total

1,300 SF office

±28,000 SF land

Secured yard area

Oil / water separator

20' clear height

2 grade-level loading doors

New LED lights

\$16,500 per month, + NNN

Available now

12.5K

SF AVAILABLE

1,300

SF OFFICE

±28,000

SF LAND

JIM KIDDER, SIOR
206.248.7328
jim.kidder@kidder.com

MATT MURRAY, SIOR
206.248.6541
matt.murray@kidder.com

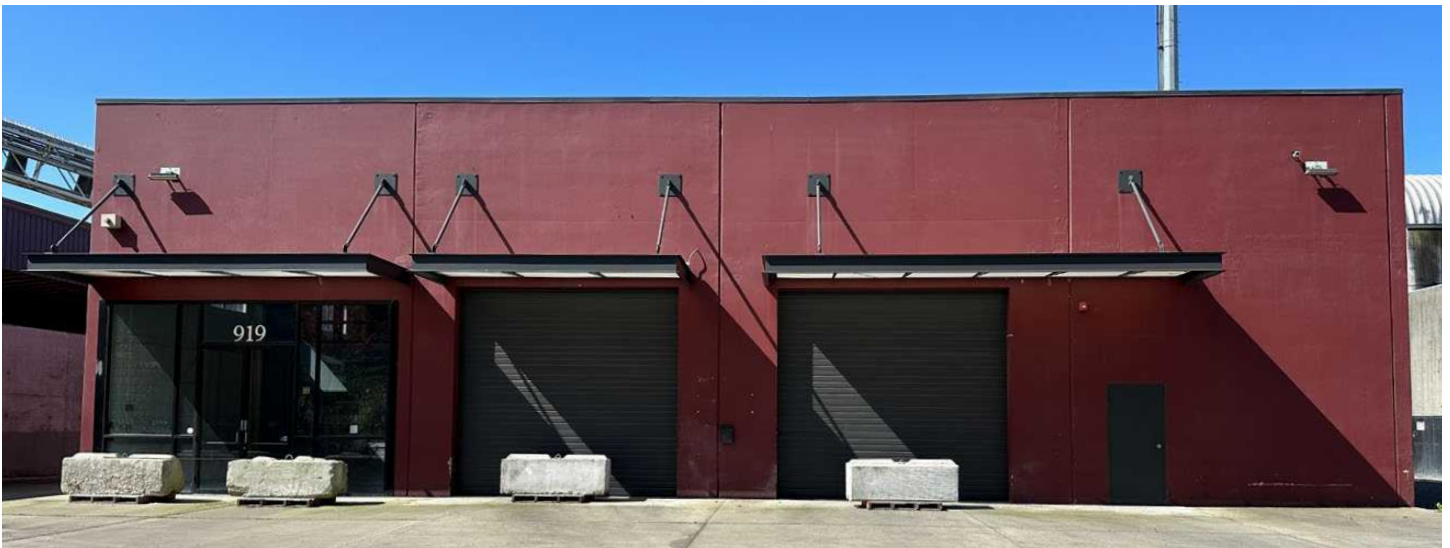
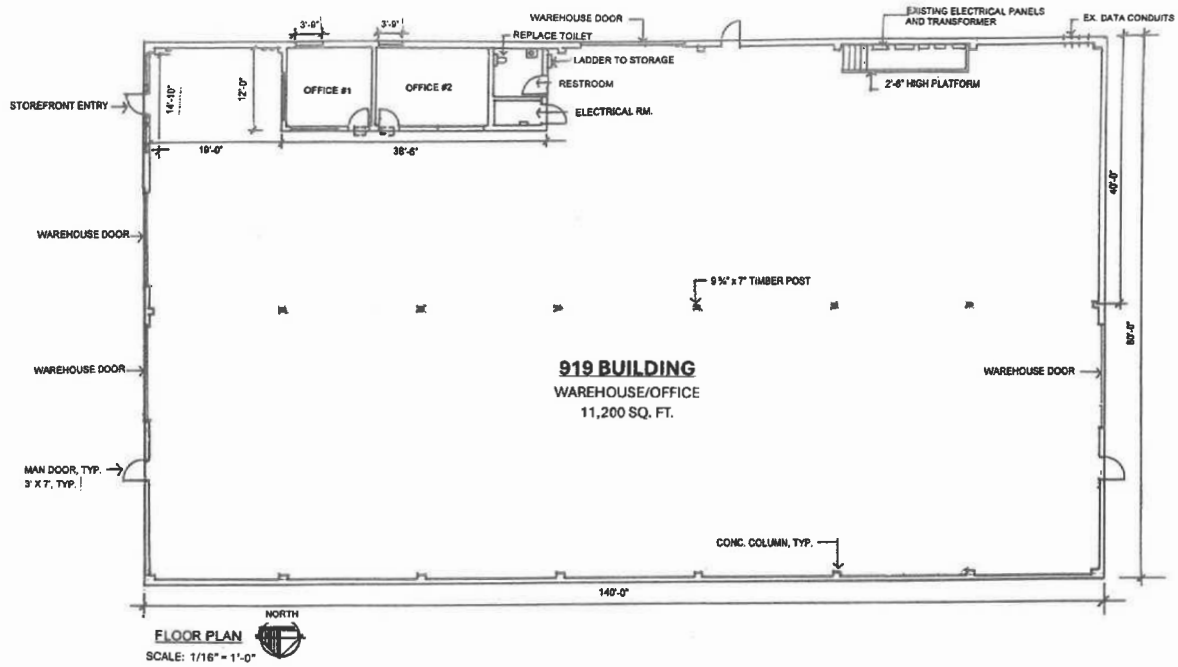
KIDDER.COM

This information supplied herein is from sources we deem reliable. It is provided without any representation, warranty, or guarantee, expressed or implied as to its accuracy. Prospective Buyer or Tenant should conduct an independent investigation and verification of all matters deemed to be material, including, but not limited to, statements of income and expenses. Consult your attorney, accountant, or other professional advisor.

km Kidder
Mathews

FOR LEASE

BUILDING FLOOR PLAN



JIM KIDDER, SIOR
206.248.7328
jim.kidder@kidder.com

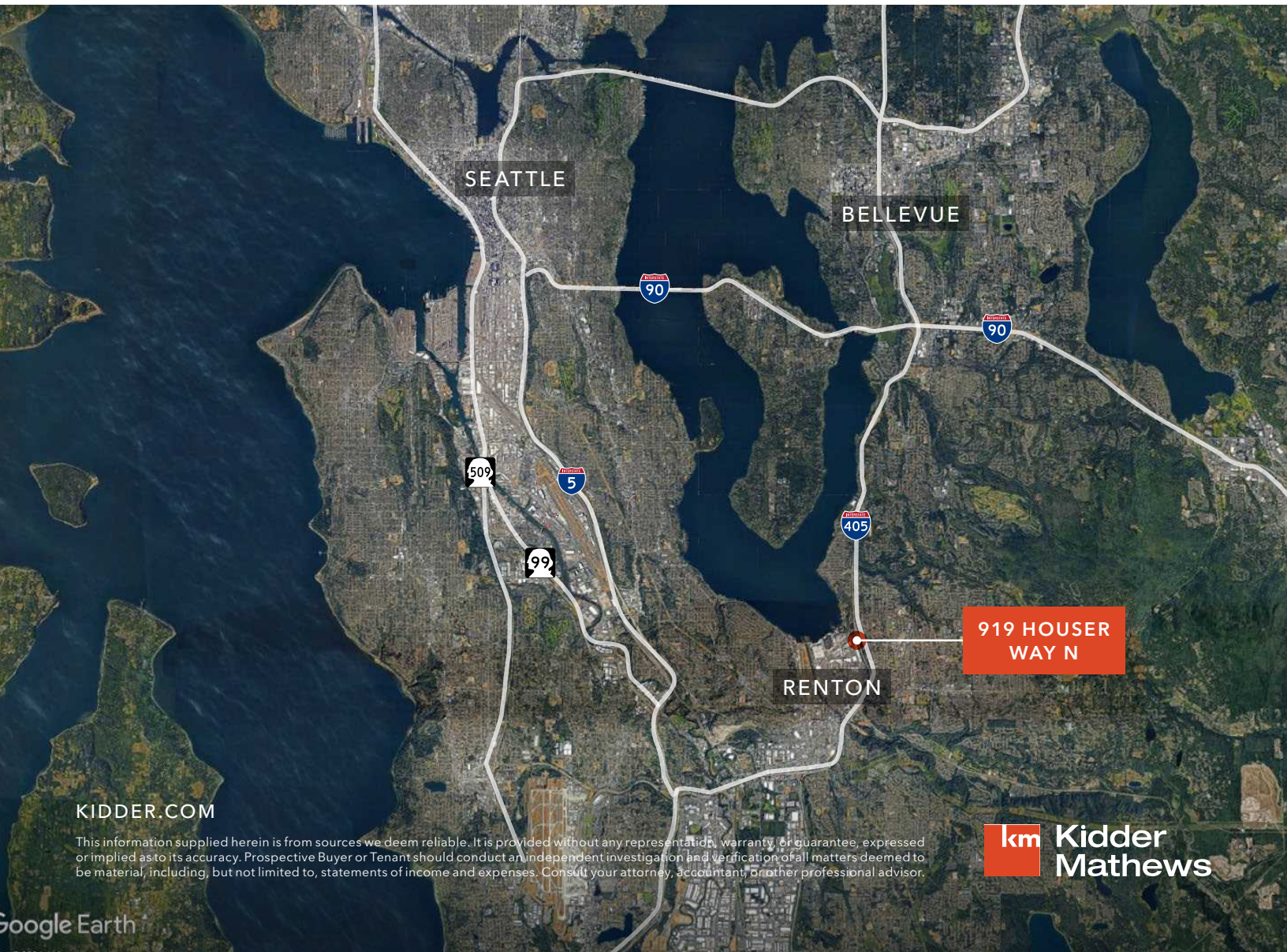
MATT MURRAY, SIOR
206.248.6541
matt.murray@kidder.com

KIDDER.COM

This information supplied herein is from sources we deem reliable. It is provided without any representation, warranty, or guarantee, expressed or implied as to its accuracy. Prospective Buyer or Tenant should conduct an independent investigation and verification of all matters deemed to be material, including, but not limited to, statements of income and expenses. Consult your attorney, accountant, or other professional advisor.



FOR LEASE



KIDDER.COM

This information supplied herein is from sources we deem reliable. It is provided without any representation, warranty, or guarantee, expressed or implied as to its accuracy. Prospective Buyer or Tenant should conduct an independent investigation and verification of all matters deemed to be material, including, but not limited to, statements of income and expenses. Consult your attorney, accountant, or other professional advisor.

km Kidder Mathews