

# FOR LEASE NEWLY REMODELED!

Prime retail space  
next to Kitsap Mall in  
Silverdale.

## 3235 NW Plaza Road

Silverdale, WA 98383

### PROPERTY HIGHLIGHTS

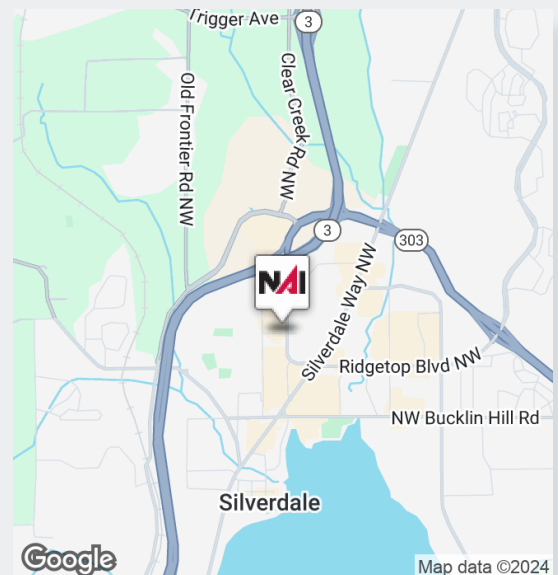
- + 7,000 SF available; immediately divisible to 3,500 SF
- + Located with easy access to Highways 3 and 303, just off Silverdale Way
- + Prominent retail pad located in front of Hobby Lobby, one block from Target, and across from the Kitsap Mall with new Winco
- + Tremendous visibility - this regional site serves the entire Kitsap Peninsula
- + Call broker for rates

#### BARRY KELLY

Partner  
+1 425 444 9357  
bkelly@nai-psp.com



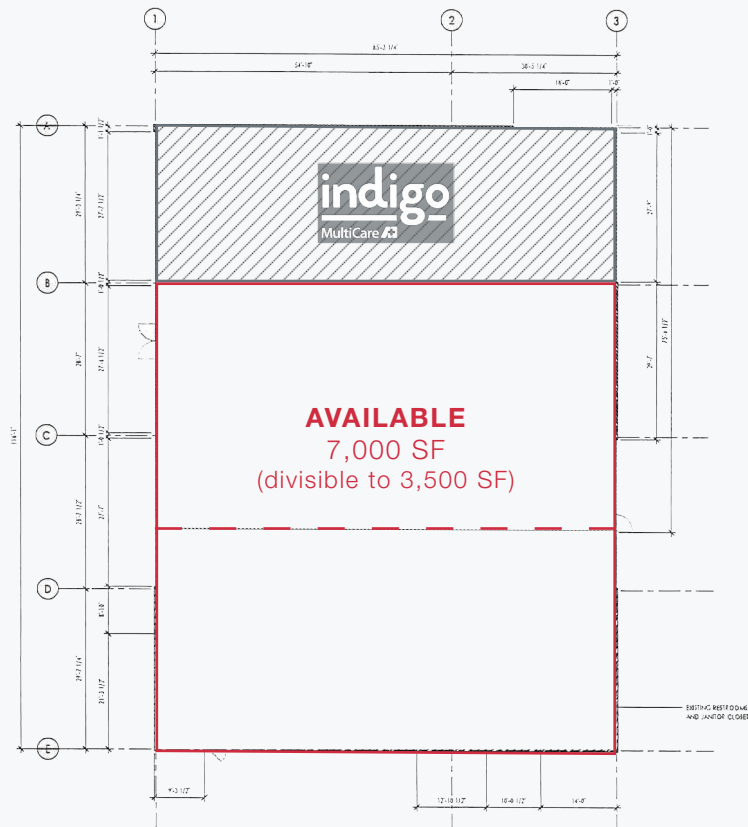
THE INFORMATION CONTAINED HEREIN HAS BEEN GIVEN TO US BY THE OWNER OF THE PROPERTY OR OTHER SOURCES WE DEEM RELIABLE. WE HAVE NO REASON TO DOUBT ITS ACCURACY, BUT WE DO NOT GUARANTEE IT. ALL INFORMATION SHOULD BE VERIFIED PRIOR TO PURCHASE OR LEASE.



nai-psp.com

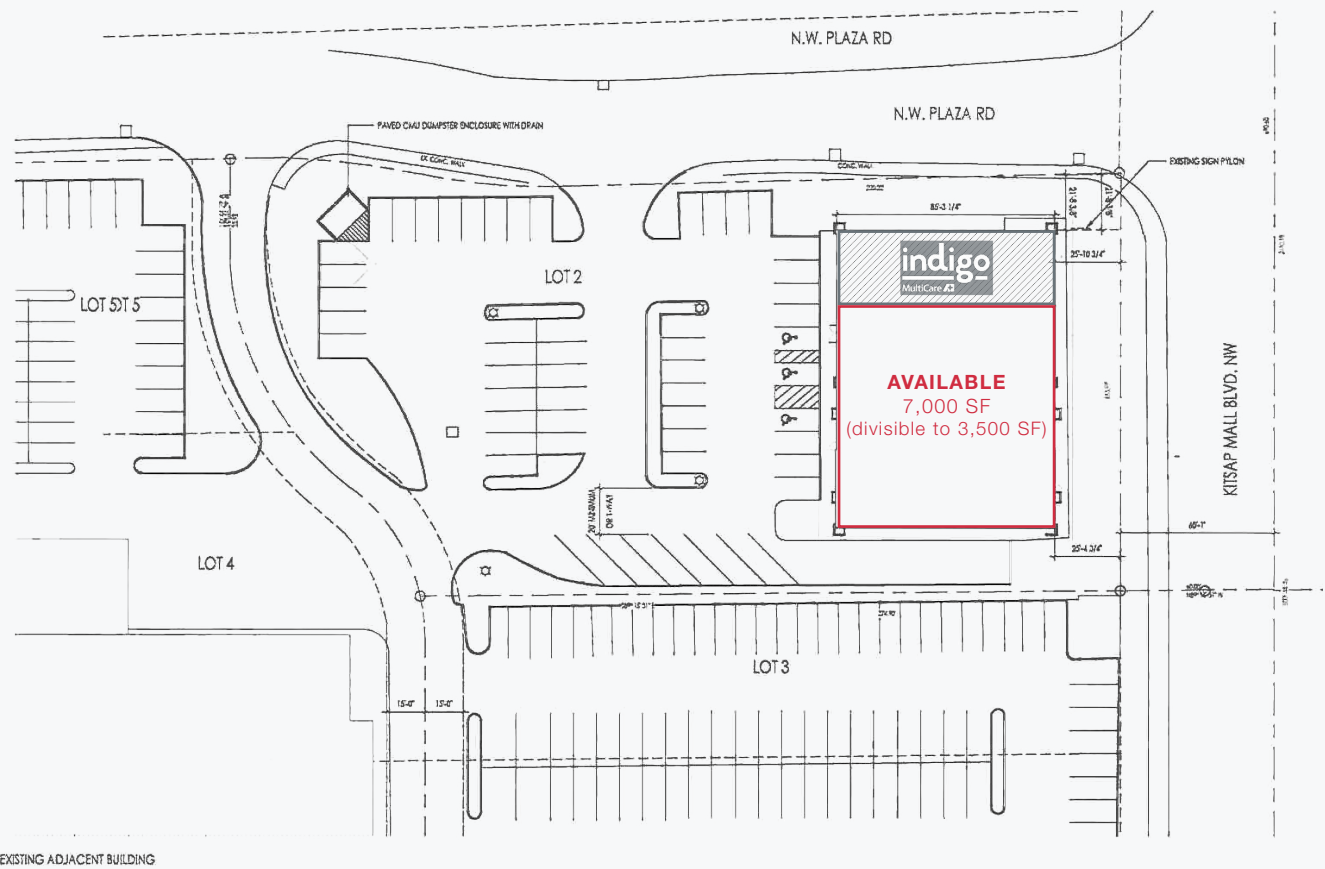


# Floor Plan





# Site Plan



**BARRY KELLY**  
 Partner  
 +1 425 444 9357  
 bkelly@nai-pp.com



*Space for lease in  
Silverdale retail  
center.*



**BARRY KELLY**  
Partner  
+1 425 444 9357  
bkelly@nai-pp.com



# Retailer Map



**BARRY KELLY**  
Partner  
+1 425 444 9357  
bkelly@nai-pp.com

