

CANYON PARK EAST

22011-22215 26TH AVE SE, BOTHELL, WA 98021

ALCO INVESTMENT
Company

CUSHMAN &
WAKEFIELD

FLEX OFFICE / INDUSTRIAL FOR LEASE

BUILDING A
76,345 SF

BUILDING D
43,940 SF

BUILDING D
30,639 SF

BUILDING D
2,517 SF



FLEX OFFICE / INDUSTRIAL, RESEARCH AND DEVELOPMENT | EXCELLENT LOCATION WITH FLEXIBLE OPTIONS

Canyon Park East is a very well-established multi-tenant 5-building business park. The assets are situated on nearly 17 acres within an attractive Canyon Park campus setting in Bothell, Washington. With both 1 and 2-story structures, the buildings possess a variety of flex, research and development, and office space which can accommodate multiple options and operational needs. The property offers a healthy parking ratio, substantial power capacity, convenient access to public transportation, and is maintained at institutional property levels.



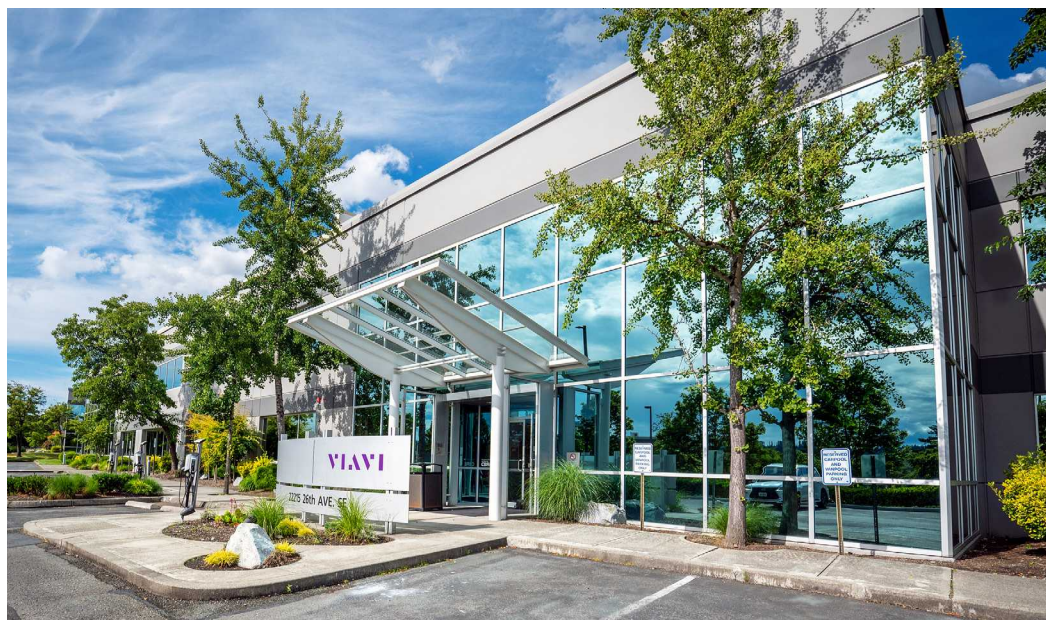
**BUILDING
A**

**BUILDING
D**



22011-22215 26TH AVE SE, BOTHELL, WA 98021

JIM REED, DUAL SIOR
+1 425 679 1681
Jim.Reed@cushwake.com



CARSON SCOTT
+1 425 736 3752
Carson.Scott@cushwake.com



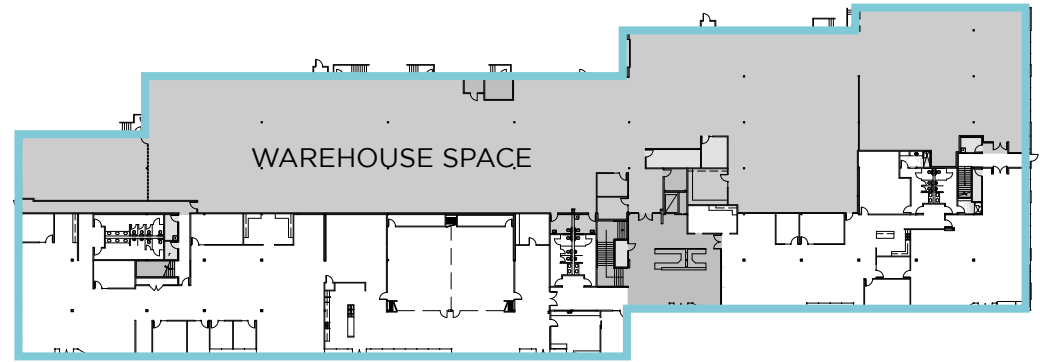
CANYON PARK EAST BUILDING A

22011 26TH AVE SE

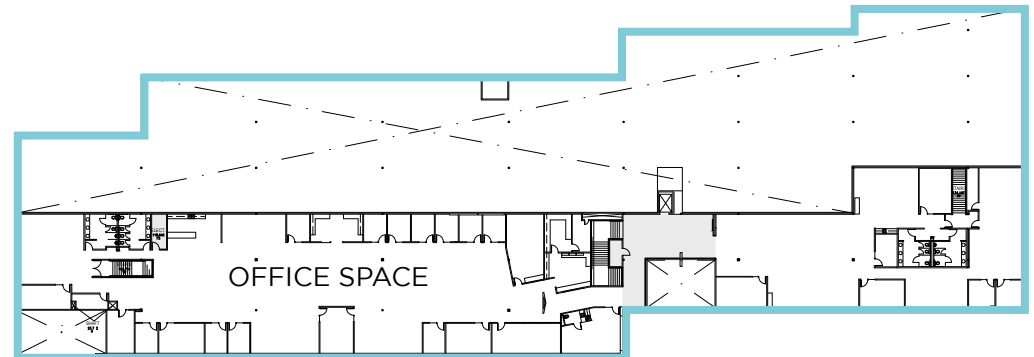
LEASE TYPE:	NNN			LEASE TERM:	Negotiable
AVAILABLE SPACE	OFFICE SF	HIGH BAY WH SF	LIGHT ASSEMBLY/OFF	TOTAL SF	BASE RENT / MO.
Full Building	24,086	27,877	24,382	76,345	Negotiable

FEATURES:

- 1st Floor: 27,877 SF High Bay
24,382 SF Light Assembly/Office
- 2nd Floor: 24,086 SF Office
- Free standing building with dock and grade level loading
- Full-building opportunity
- Large training room facility on 1st Floor
- 24' - 28' clear height
- Ability to upgrade to 4,000 AMPS



FIRST FLOOR



SECOND FLOOR



CANYON PARK EAST BUILDING D

22215 26TH AVE SE

LEASE TYPE: NNN

LEASE TERM: NEGOTIABLE

AVAILABLE SPACE

FLEX SF

BASE RENT/MO.

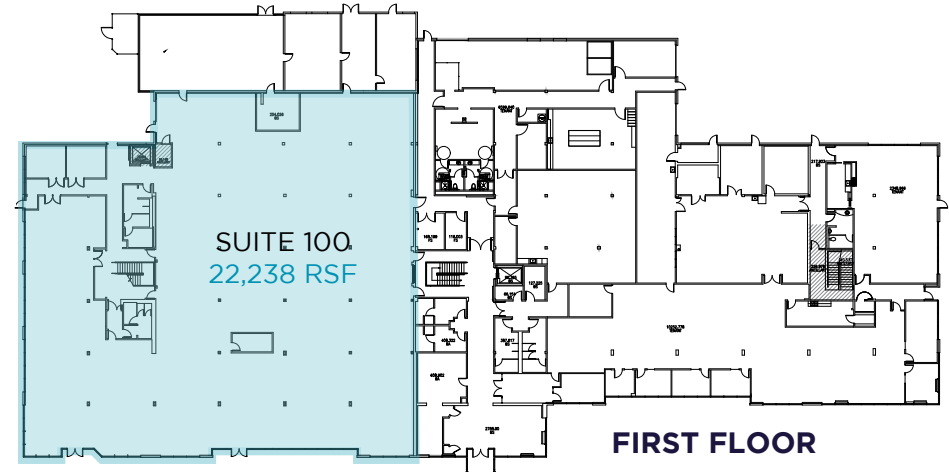
Suite 100/200

43,940

NEGOTIABLE

FEATURES:

- Suite D100/D200: Available Now
- Grade and dock loading available
- Immediate freeway access, Close proximity to amenities
- Showers / lockers available
- Floor 1 - 12'9" ceiling heights



CANYON PARK EAST BUILDING D

22215 26TH AVE SE

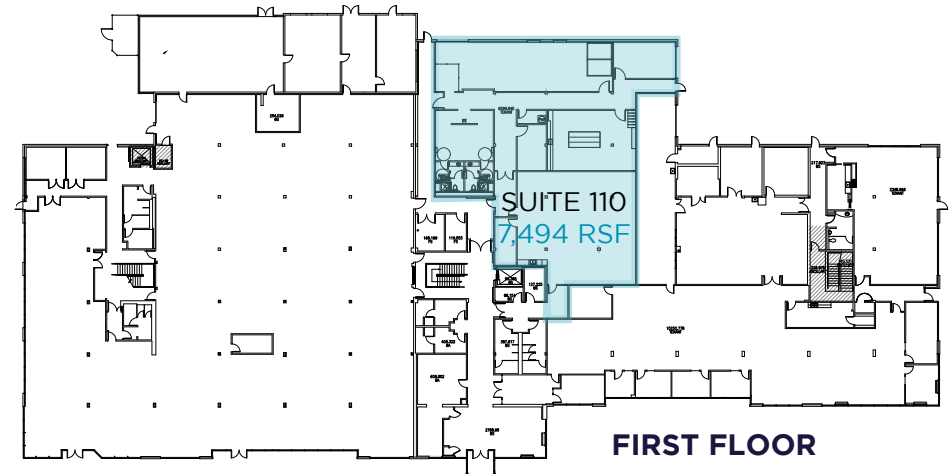
LEASE TYPE: NNN

LEASE TERM: NEGOTIABLE

AVAILABLE SPACE	FLEX SF	OFFICE SF	TOTAL SF	BASE RENT/MO.
Suite 110	7,494 SF	-	7,494 SF	NEGOTIABLE
Suite 210	-	23,145 SF	23,145 SF	NEGOTIABLE
Suite 110/210	7,494 SF	23,145 SF	30,639 SF	NEGOTIABLE

FEATURES:

- Suite 110/210: Available September, 2026
- Grade and dock loading available
- Immediate freeway access, close proximity to amenities
- Showers/lockers available



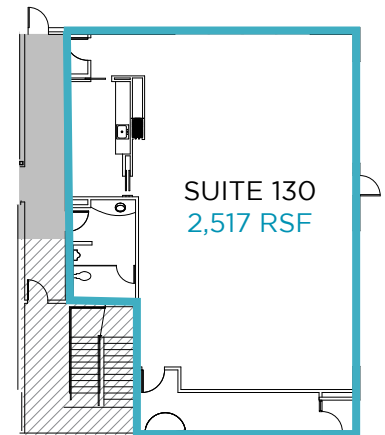
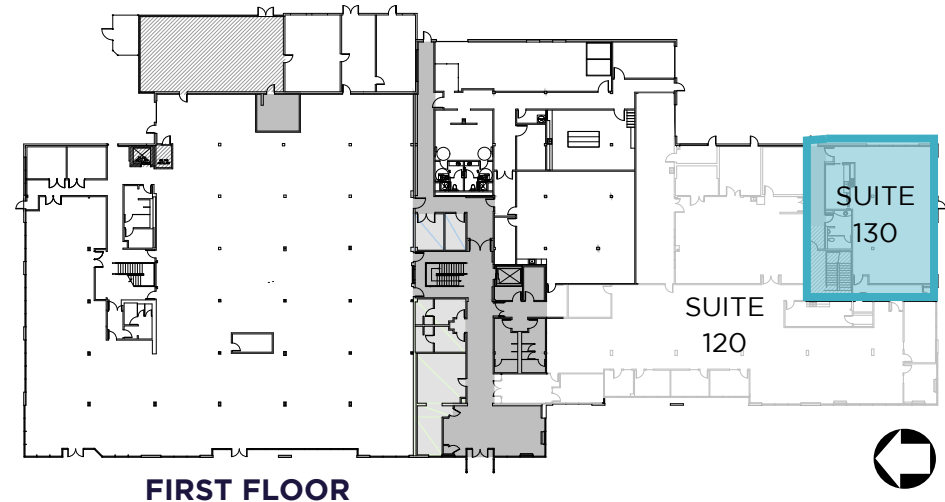
CANYON PARK EAST BUILDING D

22215 26TH AVE SE

LEASE TYPE:	NNN		LEASE TERM:		Negotiable
AVAILABLE SPACE	OFFICE SF	WAREHOUSE SF	TOTAL SF	BASE RENT / MO.	
Suite 130	2,517	-	2,517	Negotiable	

FEATURES:

- Suite 130: Available Now
- Immediate freeway access, Close proximity to amenities
- Showers / lockers available
- Communication provider: Frontier
- Floor 1 - 12'9" ceiling heights



The Canyon Park neighborhood is an essential part of Bothell's economic core and a hub for the regions most influential companies. Canyon Park totals 300 acres and is comprised of 68 buildings, the largest business park in the City of Bothell.

RESTAURANTS

- 1 Red Robin
- 2 Rama House
- 3 What the Pho
- 4 Taco Time
- 5 Viva Jalisco
- 6 Chick Fil A
- 7 Big Fish Sushi
- 8 Gyro Stop
- 9 Taco Bell
- 10 Grazie Ristorante Italiano
- 11 Wendys
- 12 Bamboo House R
- 13 Five Guys
- 14 Jack in the Box
- 15 Crystal Creek Café
- 16 Bonefish Grill
- 17 Outback Steakhouse
- 18 Readi Spaghetti
- 19 Royal Biryani House
- 20 Starbucks

RECREATION

- 1 North Creek Trail
- 2 Green Acres Park
- 3 Cedar Grove Park
- 4 Hindu Cultural Center
- 5 Ridge Activity Center

GROCERY

- 1 QFC
- 2 Safeway
- 3 PCC
- 4 Fred Meyer
- 5 International Market

HEALTH

- 1 Walgreens
- 2 Rite Aid
- 3 Bartell
- 4 Indigo Urgent Care
- 5 EvergreenHealth

BANKS

- 1 Chase Bank
- 2 Key Bank
- 3 Wells Fargo
- 4 US Bank
- 5 Bank of America

FITNESS

- 1 Bothell Gymnastics Club
- 2 LA Fitness
- 3 Orangetheory
- 4 Fitness Together
- 5 Club Pilates
- 6 Orca Swim Club

LODGING

- 1 Extended Stay
- 2 Hilton Garden Inn
- 3 Holiday Inn
- 4 Comfort Inn

TRANSIT

- 1 Park & Ride



JIM REED, DUAL SIOR
+1 425 679 1681
Jim.Reed@cushwake.com

CARSON SCOTT
+1 425 736 3752
Carson.Scott@cushwake.com



CANYON PARK EAST

22011-22215 26TH AVE SE, BOTHELL, WA 98021



FOR MORE INFORMATION, CONTACT:

JIM REED, DUAL SIOR

+1 425 679 1681

Jim.Reed@cushwake.com

CARSON SCOTT

+1 425 736 3752

Carson.Scott@cushwake.com

©2026 Cushman & Wakefield. All rights reserved. The information contained in this communication is strictly confidential. This information has been obtained from sources believed to be reliable but has not been verified. NO WARRANTY OR REPRESENTATION, EXPRESS OR IMPLIED, IS MADE AS TO THE CONDITION OF THE PROPERTY (OR PROPERTIES) REFERENCED HEREIN OR AS TO THE ACCURACY OR COMPLETENESS OF THE INFORMATION CONTAINED HEREIN, AND SAME IS SUBMITTED SUBJECT TO ERRORS, OMISSIONS, CHANGE OF PRICE, RENTAL OR OTHER CONDITIONS, WITHDRAWAL WITHOUT NOTICE, AND TO ANY SPECIAL LISTING CONDITIONS IMPOSED BY THE PROPERTY OWNER(S). ANY PROJECTIONS, OPINIONS OR ESTIMATES ARE SUBJECT TO UNCERTAINTY AND DO NOT SIGNIFY CURRENT OR FUTURE PROPERTY PERFORMANCE.

ALCO INVESTMENT
Company

**CUSHMAN &
WAKEFIELD**