

AUBURN ITC BLDG B, STE 150



*Industrial Space
For Lease*

14,850
TOTAL SF

950
OFFICE SF

CALL
FOR RATES

14,850 SF total / 950 SF office

Can combine with Suite 170 for 25,950 SF (2,220 SF)

6 dock-high doors

1 oversized grade-level door (12' x 16')

24' clear height / M-1 zoning

Easy access to SR-167 via 277th St or 15th St & access to I-5 via 277th St

Canopies over loading doors

50' concrete aprons

Available now

Call agent for rates

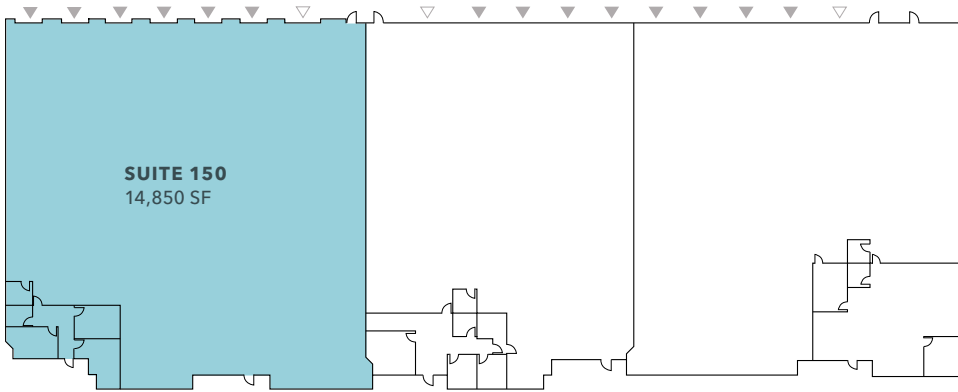
CHRIS CORR
206.248.7324
chris.corr@kidder.com

MATT MURRAY, SIOR
206.248.6541
matt.murray@kidder.com

KIDDER.COM

This information supplied herein is from sources we deem reliable. It is provided without any representation, warranty, or guarantee, expressed or implied as to its accuracy. Prospective Buyer or Tenant should conduct an independent investigation and verification of all matters deemed to be material, including, but not limited to, statements of income and expenses. Consult your attorney, accountant, or other professional advisor.

FOR LEASE



14,850 SF

BUILDING B, SUITE 150

950 SF

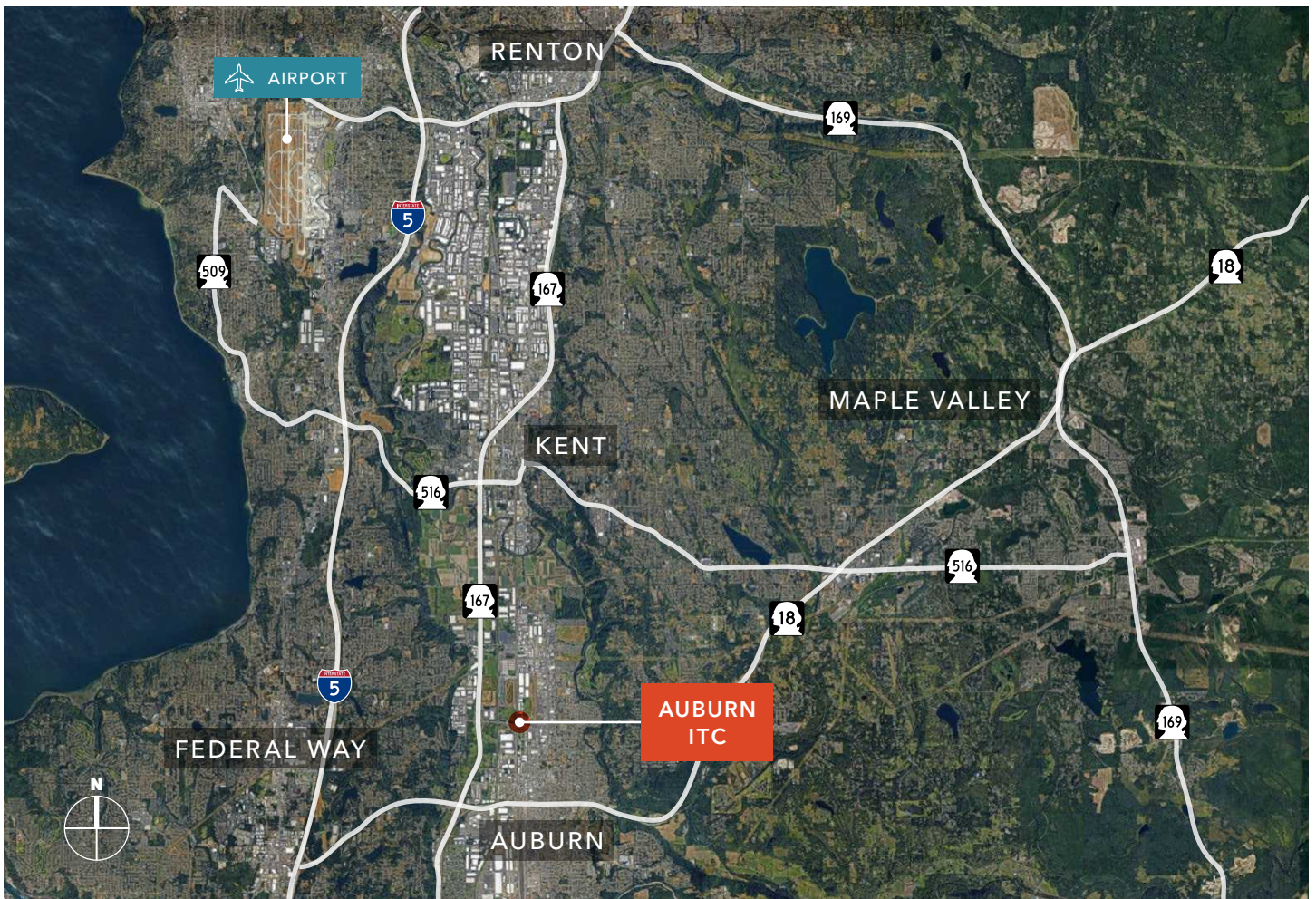
OFFICE

24'

CLEAR HEIGHT

LEGEND

△ Drive-In Loading ▲ Dock-High Loading



KIDDER.COM

This information supplied herein is from sources we deem reliable. It is provided without any representation, warranty, or guarantee, expressed or implied as to its accuracy. Prospective Buyer or Tenant should conduct an independent investigation and verification of all matters deemed to be material, including, but not limited to, statements of income and expenses. Consult your attorney, accountant, or other professional advisor.

