

# CenterPoint Lincoln Avenue Yard

## 1614 & 1620 Lincoln Ave

Tacoma, WA



## 7.07 Acre Site - 3.07 Acres Available September 1, 2026



Located in the Heart of the Port of Tacoma on the Lincoln Ave Heavy Industrial Corridor with two points of access.

### Property Highlights

- + 7.07 Total Acres
- + Crushed and Compacted Gravel Yard Surface
- + Fully Fenced - Electrified
- + Port Maritime Industrial (PMI) Zoning
- + Container Stacking Allowed within Zoning
- + Located on the Heavy Haul Corridor
- + Heating: Space Heaters

### 1620 Lincoln Ave

Available September 1, 2026

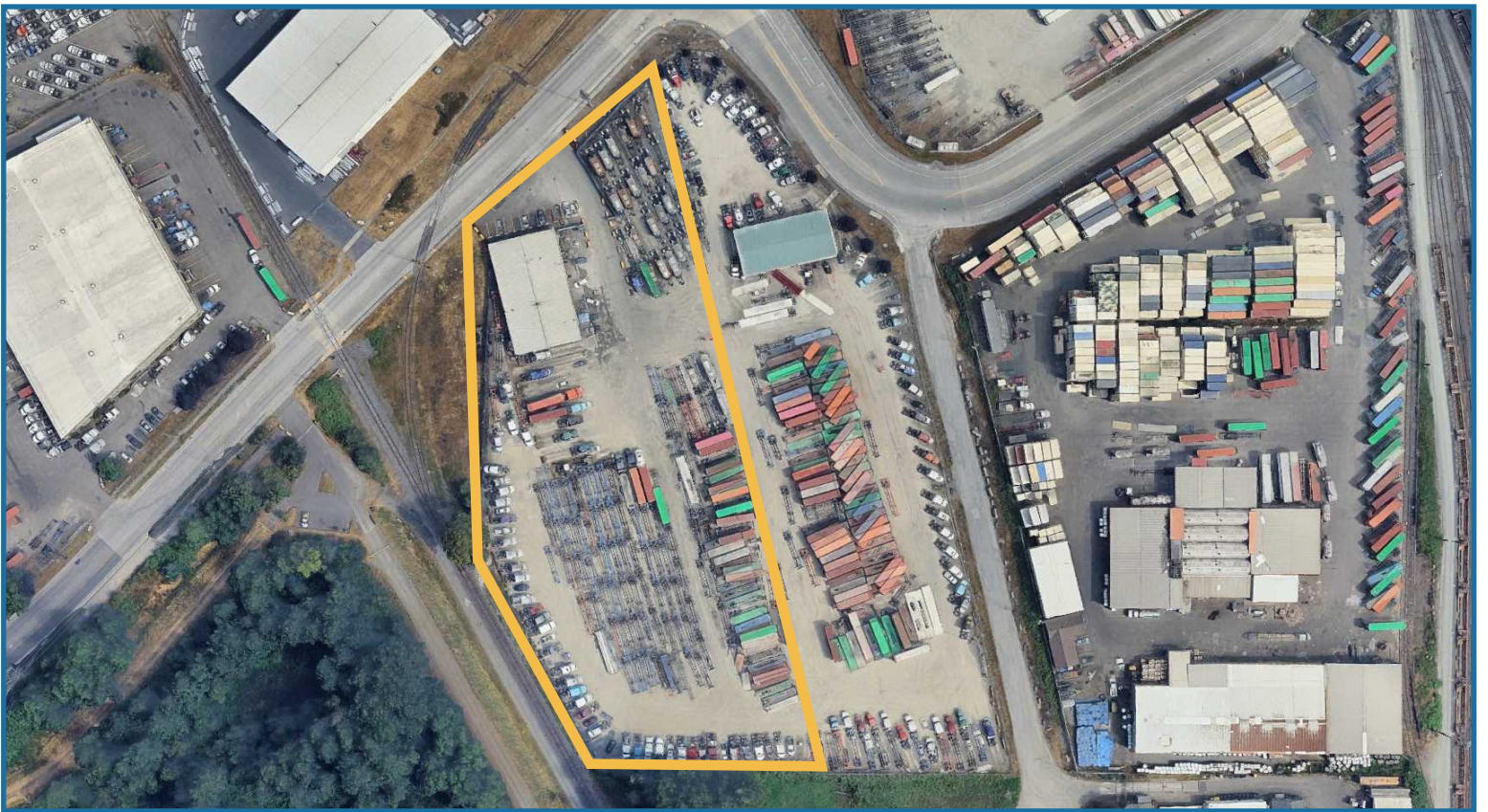
- + 3.07 AC
- + 5,000 SF Building
- + 800 SF Office/Restrooms
- + Three 16' x 16' Grade Doors
- + 21' Clear Height
- + Metal Frame Construction
- + Built in 2009
- + 225 Amps of 3 Phase Power

### 1614 Lincoln Ave

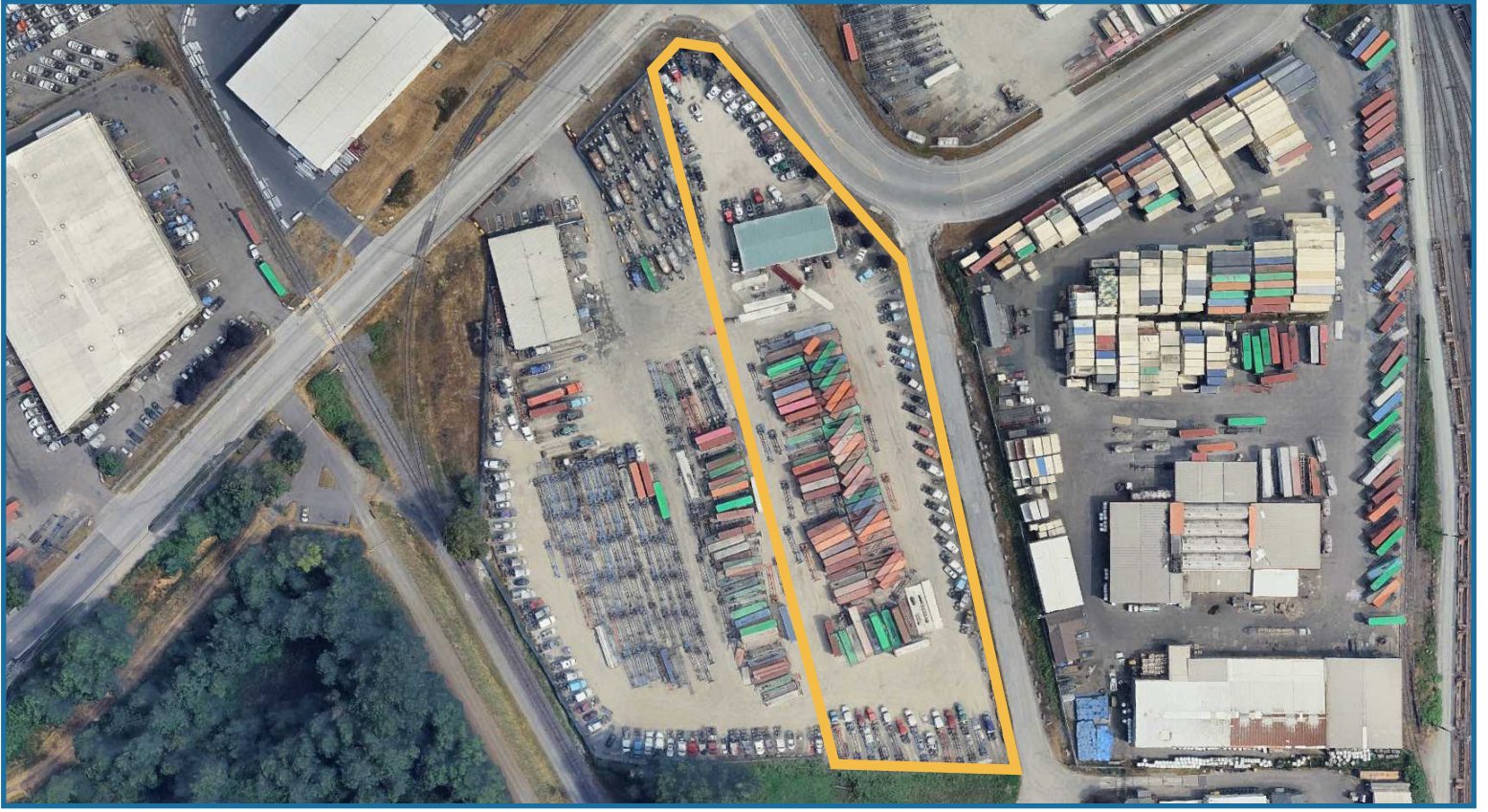
Potentially Available

- + 4.00 AC
- + 8,478 SF Building Footprint
- + Approx. 3,000 SF of Office
- + 1,500 SF Office Mezz.
- + Four Grade Level Doors (three 12' x 14' and one 10' x 10')
- + 18' Clear Height
- + Wood and Metal Framed
- + 400 Amps of 3 Phase Power





4 Acres - 1614 Lincoln Ave



3.07 Acres - 1620 Lincoln Ave

---

7.07 Acre Site - 3.07 Acres Available September 1, 2026

# CenterPoint 1614 & 1620 Lincoln Ave, Tacoma, WA

## Location Advantages



### Total Size

7.07 Acre Site

3.07 Acres Available September 1, 2026



### Total Building Size

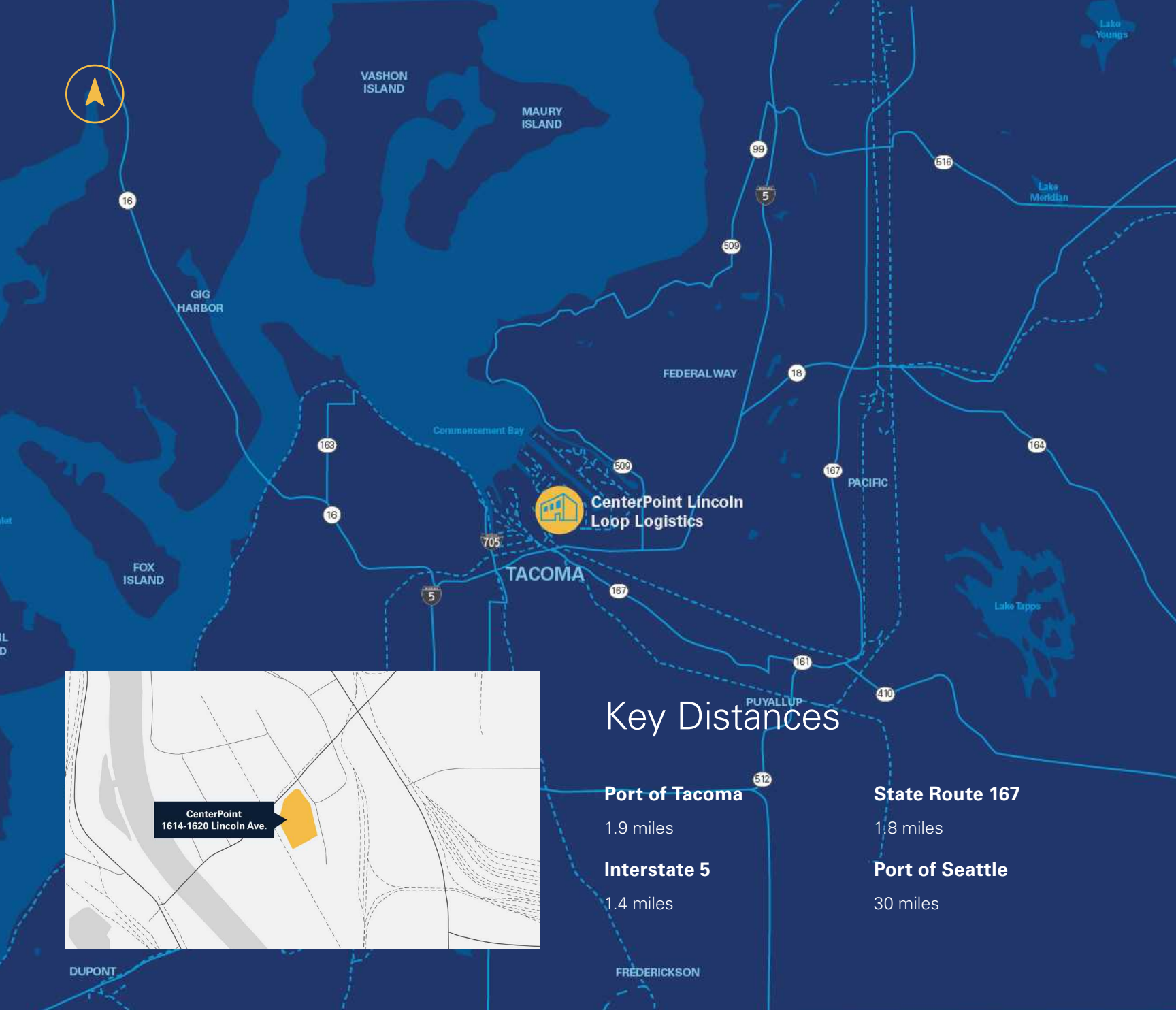
5,000 SF Metal Frame Construction

8,478 SF Building Footprint Potentially  
Coming Available



### Zoning

Port Maritime Industrial (PMI)



**CenterPoint Lincoln Loop Logistics**

## Key Distances

**Port of Tacoma**

1.9 miles

**Interstate 5**

1.4 miles

**State Route 167**

1.8 miles

**Port of Seattle**

30 miles

### About CenterPoint

CenterPoint is an industrial real estate company made up of dedicated thinkers, innovators and leaders with the creativity and know-how to tackle the industry’s toughest challenges. And it’s those kinds of problems—the delicate, the complex, the seemingly-impossible—that we relish most. Because with an agile team, substantial access to capital and industry-leading expertise, those are exactly the kinds of problems we’re built to solve.

[centerpoint.com](http://centerpoint.com)

All information is subject to verification and no liability for errors or omissions is assumed.

Owned and Developed By



Greg Stumm  
213.488.8692  
gstumm@centerpoint.com

Wes Payne  
650.888.8600  
wpayne@centerpoint.com

Exclusive Marketing Agent



Billy Moultrie  
253.444.3022  
bmoultrie@lee-associates.com

Christian Mattson, SIOR  
253.444.3021  
cmattson@lee-associates.com