

# FOR LEASE

## OFFICE SPACE

2120 State Ave NE, Olympia, WA, 98506



**PRIME**  
LOCATIONS



**JONI BAKER**  
BROKER

**GINA MCKUNE**  
BROKER

360.943.9922

[Gina@PrimeLocations.com](mailto:Gina@PrimeLocations.com)

BUILDING COMMUNITY \ CREATING VALUE





## FOR LEASE

OFFICE SPACE

2120 State Ave NE, Olympia, WA, 98506

- Available Space: 3,000 SF
- Price: \$3000/month
- Lease Type: Modified Gross

## Overview

3000 square feet of office space located at State Avenue and Sawyer Street with easy and convenient access to Downtown Olympia or the Lacey area.

Two floors with several individual offices on the 2nd floor. No elevator to access the 2nd floor space. Restrooms are available on both floors. Ample parking with a few covered spaces and the remaining in the open parking lot. Street parking is also available.

- Year Built: 1986
- Zoning: HDC-2

## Highlights

- Office Space
- Ample Parking
- Central Location

**ZACH KOSTUROS**  
PRESIDENT

360.943.9922  
Zach@PrimeLocations.com

**GINA MCKUNE**  
BROKER

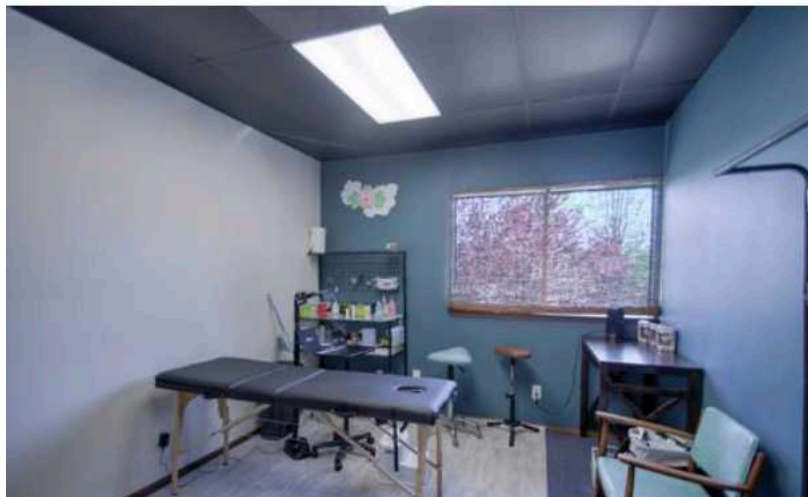
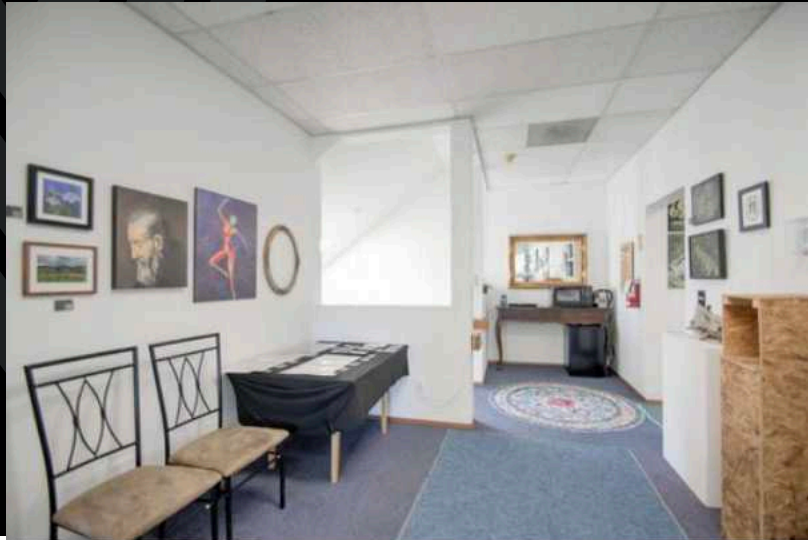
360.943.9922  
Gina@PrimeLocations.com

Property Information  
**PHOTOS**

**FOR LEASE**

OLYMPIA OFFICE

2120 State Ave NE, Olympia, WA, 98506



Property Information

# PHOTOS

## FOR LEASE

OLYMPIA OFFICE

2120 State Ave NE, Olympia, WA, 98506



BROKERAGE \ LEASING \ PROPERTY MANAGEMENT

Advisor Bio

# CONTACT

FOR LEASE

OLYMPIA OFFICE

2120 State Ave NE, Olympia, WA, 98506

## Professional Background

Gina McKune is a knowledgeable, motivated and diligent broker. Gina specializes in commercial real estate sales and leasing of retail and office space. She is a local market expert in Olympia and works throughout the Puget Sound region.

Gina's success in brokerage has been attributed to her responsiveness, firm negotiation, uncompromised integrity, diverse local market knowledge, superior marketing strategies and exceptional customer service commitment. Simply put, Gina and her team give their clients the leading edge in the current marketplace and always ensure their client's goals are met.

Gina is a lifelong resident of Washington and currently lives in Lacey. She was a former gymnast and studied criminal justice at San Diego State University. She is active in the community and is a member of the Lacey Chamber of Commerce. In her spare time, Gina enjoys spending time with family and friends, wake surfing and traveling with her husband who is a pilot.



**GINA MCKUNE**  
BROKER

360.943.9922

Gina@PrimeLocations.com

## Memberships & Affiliations

Lacey Chamber of Commerce

Rally Foundation for Childhood Cancer Research

Commercial Brokers Association



BUILDING COMMUNITY \ CREATING VALUE

Advisor Bio

# CONTACT

FOR LEASE

OLYMPIA OFFICE

2120 State Ave NE, Olympia, WA, 98506

## Professional Background

Joni Baker is a licensed commercial real estate broker and has been actively involved in many facets of the real estate industry for nearly two decades. Her long history of involvement in the commercial real estate industry began while gaining valuable experience working alongside one of her mentors and a founding member of Prime Locations, Priscilla Terry. This background of hands-on experience and knowledge along with an impressive list of clients she's represented over the years makes her one of the more knowledgeable and capable agents in Olympia.

In addition to working with retail, office and industrial clients, Joni has represented a wide variety of investment clients. From sales and purchases of smaller commercial properties to larger multi-million-dollar retail shopping centers and warehouses, her knowledge of

market trends and her extensive database of clients creates value for each of them. Her strong commitment to the highest professional standards, and enthusiasm to provide first-time buyers and sellers with the information and tools they need to be successful. She is passionate to work with established business owners in order to assist in sale or purchase transactions. Whatever your need, Joni has the expertise to help you with your next real estate deal. When she's not spending time with her family and grandchildren, she enjoys painting, traveling, and hiking around the beautiful Pacific Northwest.



**JONI BAKER**  
BROKER

360.943.9922

## Memberships & Affiliations

Thurston County Chamber of Commerce Board Member  
Commercial Brokers Association



BUILDING COMMUNITY \ CREATING VALUE

# DISCLAIMER

PROPERTY MANAGEMENT  
LEASING  
BROKERAGE

## Confidentiality & Disclaimer

All materials and information received or derived from Prime Locations its directors, officers, agents, advisors, affiliates and/or any third party sources are provided without representation or warranty as to completeness, veracity, or accuracy, condition of the property, compliance or lack of compliance with applicable governmental requirements, developability or suitability, financial performance of the property, projected financial performance of the property for any party's intended use or any and all other matters.

Neither Prime Locations its directors, officers, agents, advisors, or affiliates makes any representation or warranty, express or implied, as to accuracy or completeness of the any materials or information provided, derived, or received. Materials and information from any source, whether written or verbal, that may be furnished for review are not a substitute for a party's active conduct of its own due diligence to determine these and other matters of significance to such party. Prime Locations will not investigate or verify any such matters or conduct due diligence for a party unless otherwise agreed in writing.

### EACH PARTY SHALL CONDUCT ITS OWN INDEPENDENT INVESTIGATION AND DUE DILIGENCE.

Any party contemplating or under contract or in escrow for a transaction is urged to verify all information and to conduct their own inspections and investigations including through appropriate third party independent professionals selected by such party. All financial data should be verified by the party including by obtaining and reading applicable documents and reports and consulting appropriate independent professionals. Prime Locations makes no warranties and/or representations regarding the veracity, completeness, or relevance of any financial data or assumptions. Prime Locations does not serve as a financial advisor to any party regarding any proposed transaction. All data and assumptions regarding financial performance, including that used for financial modeling purposes, may differ from actual data or performance. Any estimates of market rents and/or projected rents that may be provided to a party do not necessarily mean that rents can be established at or increased to that level. Parties must evaluate any applicable contractual and governmental limitations as well as market conditions, vacancy factors and other issues in order to determine rents from or for the property.

Legal questions should be discussed by the party with an attorney. Tax questions should be discussed by the party with a certified public accountant or tax attorney. Title questions should be discussed by the party with a title officer or attorney. Questions regarding the condition of the property and whether the property complies with applicable governmental requirements should be discussed by the party with appropriate engineers, architects, contractors, other consultants and governmental agencies. All properties and services are marketed by Prime Locations in compliance with all applicable fair housing and equal opportunity laws.

